

3213

Instrument 6890

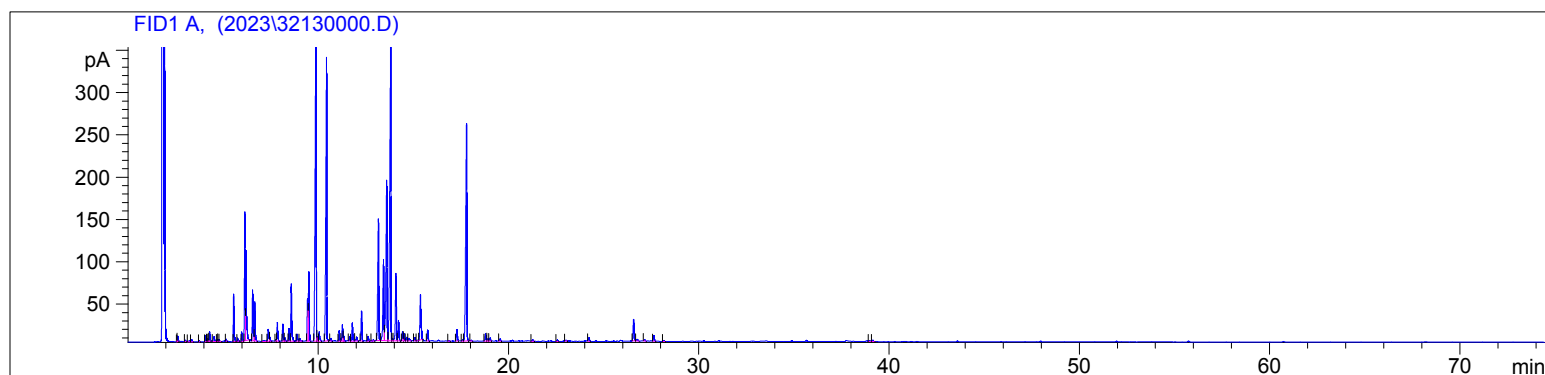
C:\HPCHEM\2\DATA\2023\
32130000.D

Roman Chamomile Conventional
3213-DAGN
USA
Anthemis nobilis
Sample/Solvent: 0.07g/0.48g
Injection Amount: 0.2uL
15:1 Split Ratio

HP-5 5% Phenyl Methyl Siloxane
30.000m
250.000um
0.250um

4/17/2023 1:57:11 PM
4/17/2023 1:57:11 PM

4/18/2023
10:15:38 AM



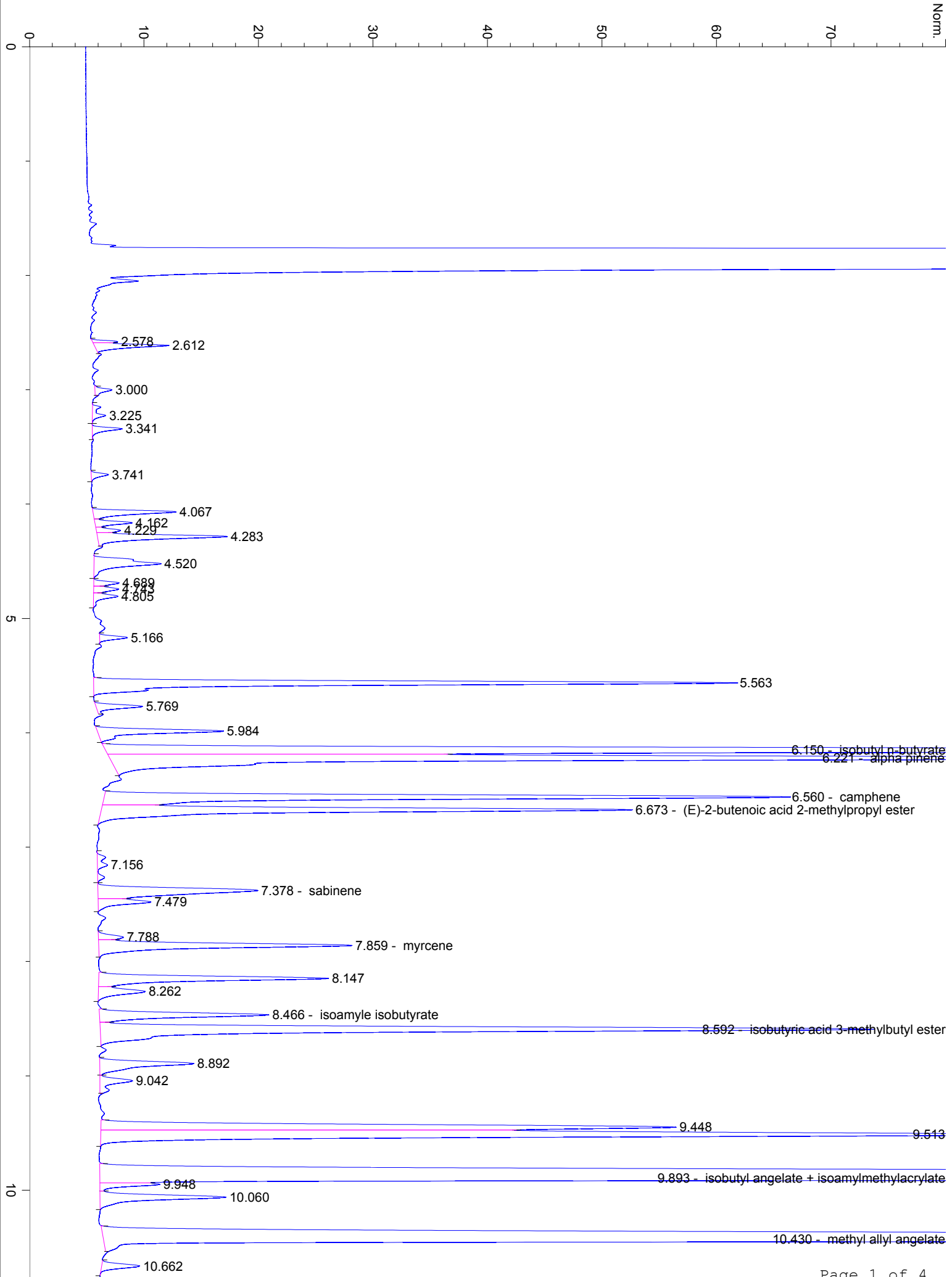
#	Compound Name	Meas. Ret.	Amount	Response	Height	Area	Area %
1		2.58	0.00	2.80	2.21	2.80	0.03
2		2.61	0.00	14.06	6.51	14.06	0.13
3		3.00	0.00	3.45	1.49	3.45	0.03
4		3.22	0.00	4.24	1.16	4.24	0.04
5		3.34	0.00	5.78	2.60	5.78	0.05
6		3.74	0.00	3.32	1.49	3.32	0.03
7		4.07	0.00	17.75	7.26	17.75	0.17
8		4.16	0.00	7.04	3.25	7.04	0.07
9		4.23	0.00	4.28	2.12	4.28	0.04
10		4.28	0.00	29.69	11.34	29.69	0.28
11		4.52	0.00	23.63	5.85	23.63	0.22
12		4.69	0.00	4.68	2.19	4.68	0.04
13		4.74	0.00	5.23	2.18	5.23	0.05
14		4.81	0.00	5.90	2.12	5.90	0.06
15		5.17	0.00	5.10	2.42	5.10	0.05
16		5.56	0.00	145.53	56.13	145.53	1.37
17		5.77	0.00	9.95	4.07	9.95	0.09
18		5.98	0.00	30.07	11.01	30.07	0.28
19	isobutyl n-butyrate	6.15	0.00	383.34	151.94	383.34	3.62
20	alpha pinene	6.22	0.00	298.75	105.89	298.75	2.82
21	camphene	6.56	0.00	166.50	59.77	166.50	1.57
22	(E)-2-butenic acid 2-methy	6.67	0.00	132.60	46.35	132.60	1.25
23		7.16	0.00	6.03	0.88	6.03	0.06
24	sabinene	7.38	0.00	53.85	13.95	53.85	0.51
25		7.48	0.00	13.49	4.60	13.49	0.13
26		7.79	0.00	5.46	2.18	5.46	0.05
27	myrcene	7.86	0.00	65.82	22.10	65.82	0.62
28		8.15	0.00	58.06	20.05	58.06	0.55
29		8.26	0.00	13.87	4.08	13.87	0.13
30	isoamyle isobutyrate	8.47	0.00	43.31	14.78	43.31	0.41
31	isobutyric acid 3-methylbut	8.59	0.00	210.49	67.39	210.49	1.99
32		8.89	0.00	28.05	8.21	28.05	0.26
33		9.04	0.00	10.73	2.85	10.73	0.10
34		9.45	0.00	146.28	50.23	146.28	1.38
35		9.51	0.00	260.33	81.69	260.33	2.46
36	isobutyl angelate + isoamyl	9.89	0.00	1601.29	424.50	1601.29	15.12
37		9.95	0.00	10.78	5.24	10.78	0.10
38		10.06	0.00	34.34	11.01	34.34	0.32
39	methyl allyl angelate	10.43	0.00	1164.12	334.79	1164.12	10.99
40		10.66	0.00	8.93	3.32	8.93	0.08

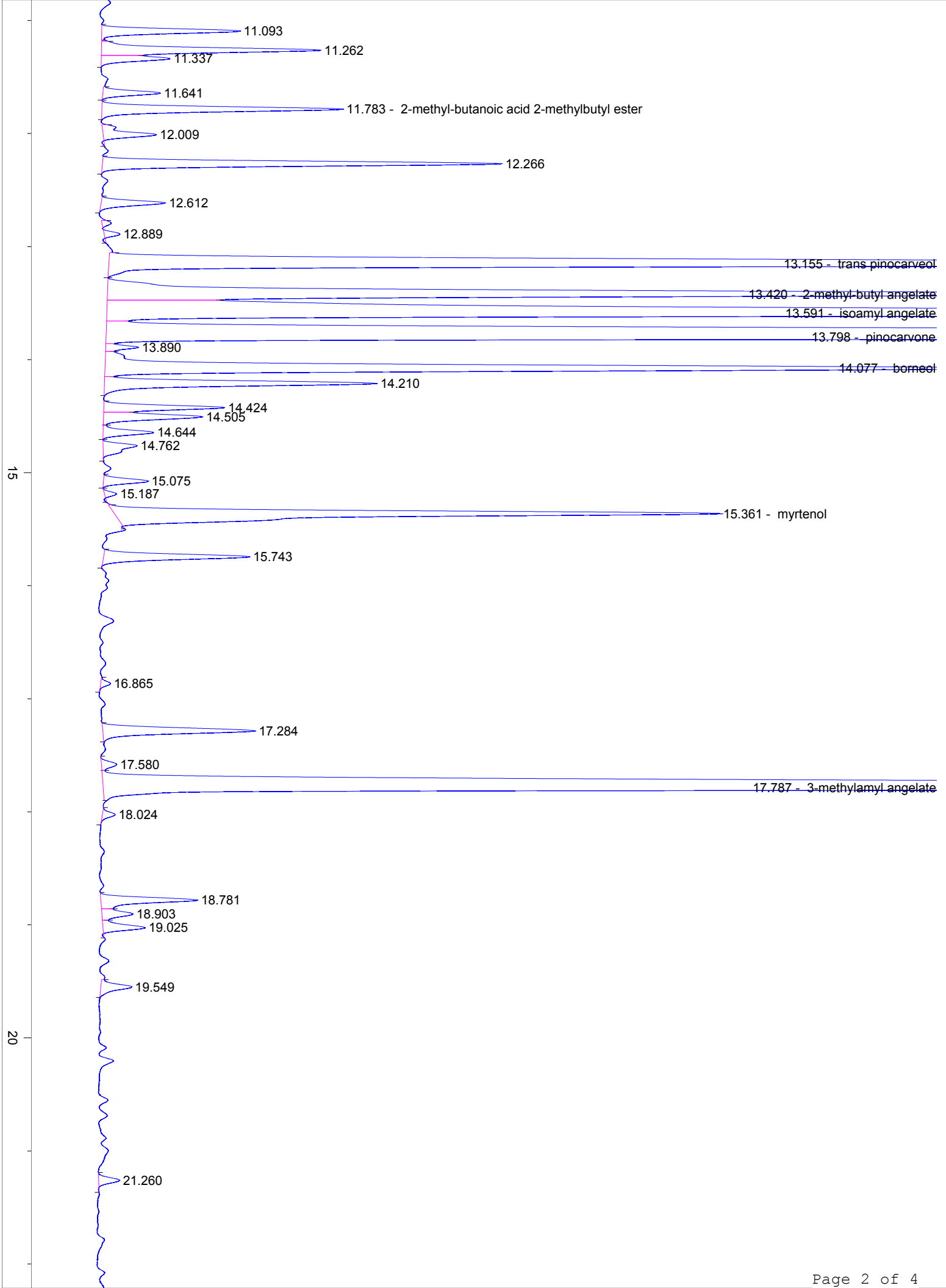
3213

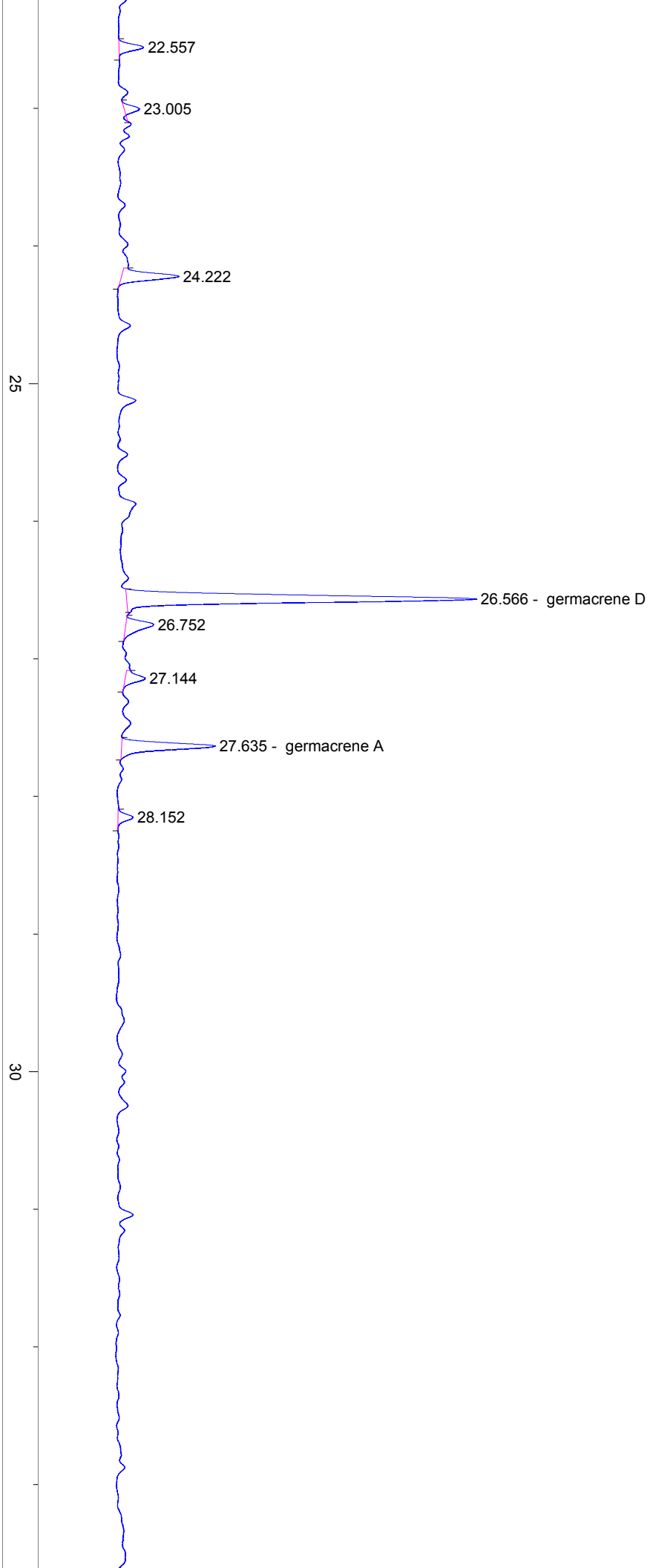
Instrument 6890

C:\HPCHEM\2\DATA\2023\
32130000.DRoman Chamomile Conventional
3213-DAGN
USA
Anthemis nobilis
Sample/Solvent: 0.07g/0.48g
Injection Amount: 0.2uL
15:1 Split RatioHP-5 5% Phenyl Methyl Siloxane
30.000m
250.000um
0.250um4/17/2023 1:57:11 PM
4/17/2023 1:57:11 PM4/18/2023
10:15:38 AM

#	Compound Name	Meas. Ret.	Amount	Response	Height	Area	Area %
41		11.09	0.00	36.18	12.22	36.18	0.34
42		11.26	0.00	61.48	19.38	61.48	0.58
43		11.34	0.00	17.78	6.06	17.78	0.17
44		11.64	0.00	14.95	5.08	14.95	0.14
45	2-methyl-butanoic acid 2-me	11.78	0.00	66.50	21.31	66.50	0.63
46		12.01	0.00	16.68	4.70	16.68	0.16
47		12.27	0.00	106.66	35.29	106.66	1.01
48		12.61	0.00	17.95	5.67	17.95	0.17
49		12.89	0.00	5.18	1.38	5.18	0.05
50	trans pinocarveol	13.15	0.00	532.60	143.69	532.60	5.03
51	2-methyl-butyl angelate	13.42	0.00	353.20	95.71	353.20	3.33
52	isoamyl angelate	13.59	0.00	772.73	189.14	772.73	7.30
53	pinocarpone	13.80	0.00	1475.11	353.61	1475.11	13.93
54		13.89	0.00	7.21	2.88	7.21	0.07
55	borneol	14.08	0.00	289.28	79.84	289.28	2.73
56		14.21	0.00	77.96	24.07	77.96	0.74
57		14.42	0.00	31.27	10.68	31.27	0.30
58		14.50	0.00	28.97	8.76	28.97	0.27
59		14.64	0.00	14.01	4.47	14.01	0.13
60		14.76	0.00	13.41	3.00	13.41	0.13
61		15.07	0.00	12.21	3.94	12.21	0.12
62		15.19	0.00	2.48	1.07	2.48	0.02
63	myrtenol	15.36	0.00	203.10	53.48	203.10	1.92
64		15.74	0.00	42.69	12.92	42.69	0.40
65		16.86	0.00	2.50	0.85	2.50	0.02
66		17.28	0.00	47.87	13.47	47.87	0.45
67		17.58	0.00	4.83	1.33	4.83	0.05
68	3-methylamyl angelate	17.79	0.00	1058.44	256.95	1058.44	9.99
69		18.02	0.00	3.60	1.12	3.60	0.03
70		18.78	0.00	29.52	8.56	29.52	0.28
71		18.90	0.00	10.06	2.74	10.06	0.10
72		19.02	0.00	12.85	3.72	12.85	0.12
73		19.55	0.00	10.59	2.72	10.59	0.10
74		21.26	0.00	6.24	1.85	6.24	0.06
75		22.56	0.00	5.87	1.80	5.87	0.06
76		23.00	0.00	3.02	1.11	3.02	0.03
77		24.22	0.00	14.30	4.17	14.30	0.14
78	germacrene D	26.57	0.00	91.29	25.41	91.29	0.86
79		26.75	0.00	9.23	2.00	9.23	0.09
80		27.14	0.00	5.57	1.45	5.57	0.05
81	germacrene A	27.64	0.00	23.55	6.80	23.55	0.22
82		28.15	0.00	3.77	1.09	3.77	0.04
83		38.96	0.00	3.61	1.10	3.61	0.03
84		39.14	0.00	6.47	1.77	6.47	0.06







35

40

min

38.962
39.138