

Clary Sage Org.

HP-5 5% Phenyl Methyl Siloxane

3241-JBAA

30.000m

France

250.000um

Salvia Sclarea

0.250um

Sample/Solvent: 0.05g/0.51g

Injection Amount: 0.2uL

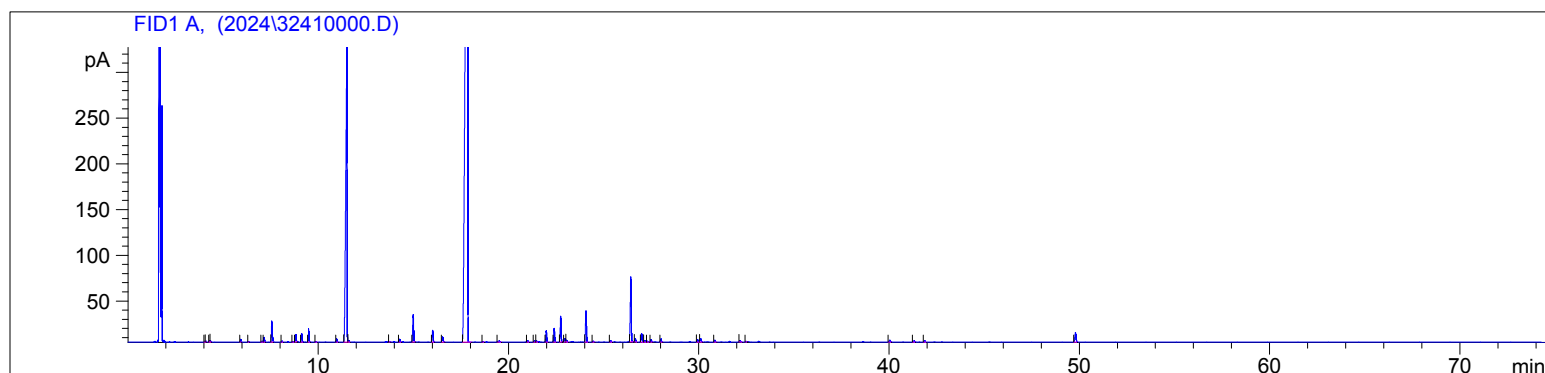
20:1 Split Ratio

10/23/2024 10:25:23 AM

10/23/2024

10/23/2024 10:25:23 AM

1:24:05 PM



#	Compound Name	Meas. Ret.	Amount	Response	Height	Area	Area %
1		4.04	0.00	2.03	1.08	2.03	0.02
2	Trans-salvene	4.09	0.00	2.49	1.15	2.49	0.03
3		4.28	0.00	3.47	1.84	3.47	0.04
4		4.32	0.00	3.28	1.52	3.28	0.04
5	Alpha Pinene	5.92	0.00	7.01	3.08	7.01	0.08
6		6.33	0.00	1.81	0.80	1.81	0.02
7		7.04	0.00	2.24	0.96	2.24	0.02
8	Beta Pinene	7.15	0.00	16.15	5.18	16.15	0.18
9	Myrcene	7.55	0.00	68.05	22.98	68.05	0.75
10	Alpha Phellandrene	8.09	0.00	3.75	1.47	3.75	0.04
11		8.66	0.00	2.59	0.97	2.59	0.03
12	1.8 Cineol	8.81	0.00	22.56	8.24	22.56	0.25
13	Cis-Beta Ocimene	9.13	0.00	25.93	9.19	25.93	0.29
14	Trans-Beta Ocimene	9.50	0.00	42.08	14.76	42.08	0.46
15		9.88	0.00	2.13	0.73	2.13	0.02
16	Terpinolene	10.98	0.00	10.38	3.41	10.38	0.11
17	Linalool	11.51	0.00	1573.51	327.48	1573.51	17.37
18		11.61	0.00	5.65	1.70	5.65	0.06
19		13.74	0.00	2.04	0.72	2.04	0.02
20		14.29	0.00	10.64	3.22	10.64	0.12
21	Alpha Terpineol	15.00	0.00	99.77	29.68	99.77	1.10
22		16.02	0.00	41.82	12.77	41.82	0.46
23	Nerol	16.54	0.00	22.41	5.51	22.41	0.25
24	Linalyl Acetate	17.86	0.00	6287.01	794.21	6287.01	69.41
25		18.66	0.00	2.45	0.76	2.45	0.03
26		19.52	0.00	7.58	1.55	7.58	0.08
27		21.01	0.00	6.47	1.94	6.47	0.07
28		21.37	0.00	5.33	1.47	5.33	0.06
29		21.48	0.00	4.57	1.32	4.57	0.05
30	Neryl Acetate	21.99	0.00	40.98	12.39	40.98	0.45
31	Geranyl Acetate	22.41	0.00	51.15	15.07	51.15	0.56
32	Alpha Copaene	22.75	0.00	91.02	28.13	91.02	1.00
33	Beta Cubebene	22.97	0.00	12.77	3.69	12.77	0.14
34		23.06	0.00	7.07	2.22	7.07	0.08
35	Beta Caryophyllene	24.08	0.00	120.97	34.34	120.97	1.34
36		24.45	0.00	4.06	1.19	4.06	0.04
37		25.37	0.00	5.94	1.70	5.94	0.07
38	Germacrene D	26.44	0.00	256.75	71.07	256.75	2.83
39		26.67	0.00	12.12	3.49	12.12	0.13
40		27.01	0.00	34.47	9.47	34.47	0.38

3241-JBAA

Instrument 6890

C:\HPCHEM\2\DATA\2024\
32410000.D

Clary Sage Org.

HP-5 5% Phenyl Methyl Siloxane

3241-JBAA

30.000m

France

250.000um

Salvia Sclarea

0.250um

Sample/Solvent: 0.05g/0.51g

Injection Amount: 0.2uL

20:1 Split Ratio

10/23/2024 10:25:23 AM

10/23/2024

10/23/2024 10:25:23 AM

1:24:05 PM

#	Compound Name	Meas. Ret.	Amount	Response	Height	Area	Area %
41		27.16	0.00	6.52	1.74	6.52	0.07
42		27.31	0.00	3.00	0.92	3.00	0.03
43		27.50	0.00	9.23	2.80	9.23	0.10
44		28.02	0.00	12.56	3.58	12.56	0.14
45		29.94	0.00	11.09	2.70	11.09	0.12
46		30.12	0.00	14.60	3.57	14.60	0.16
47		30.85	0.00	6.54	1.90	6.54	0.07
48		32.18	0.00	6.45	1.56	6.45	0.07
49		32.49	0.00	1.79	0.74	1.79	0.02
50	Sclareol Oxide	40.03	0.00	8.84	2.27	8.84	0.10
51		41.30	0.00	5.15	1.42	5.15	0.06
52		41.86	0.00	5.05	1.43	5.05	0.06
53	Sclareol	49.79	0.00	44.71	10.34	44.71	0.49