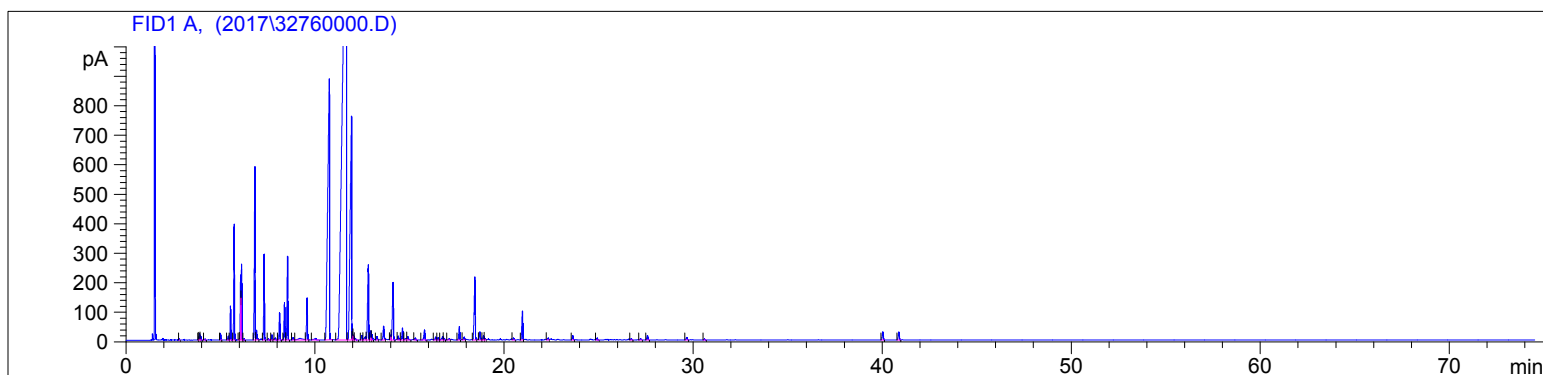


3276-041315

Instrument 6890

C:\HPCHEM\2\DATA\2017\
32760000.DCedar Leaf (Wildcrafted)
3276-041315
Canada
thuja occidentalis
Sample/CH2CL2: 0.10g/0.31g
Injection: 0.2uLHP-5 5% Phenyl Methyl Siloxane
30.000m
250.000um
0.250um4/4/2017 10:10:23 AM
4/4/2017 10:10:23 AM4/4/2017
11:26:18 AM

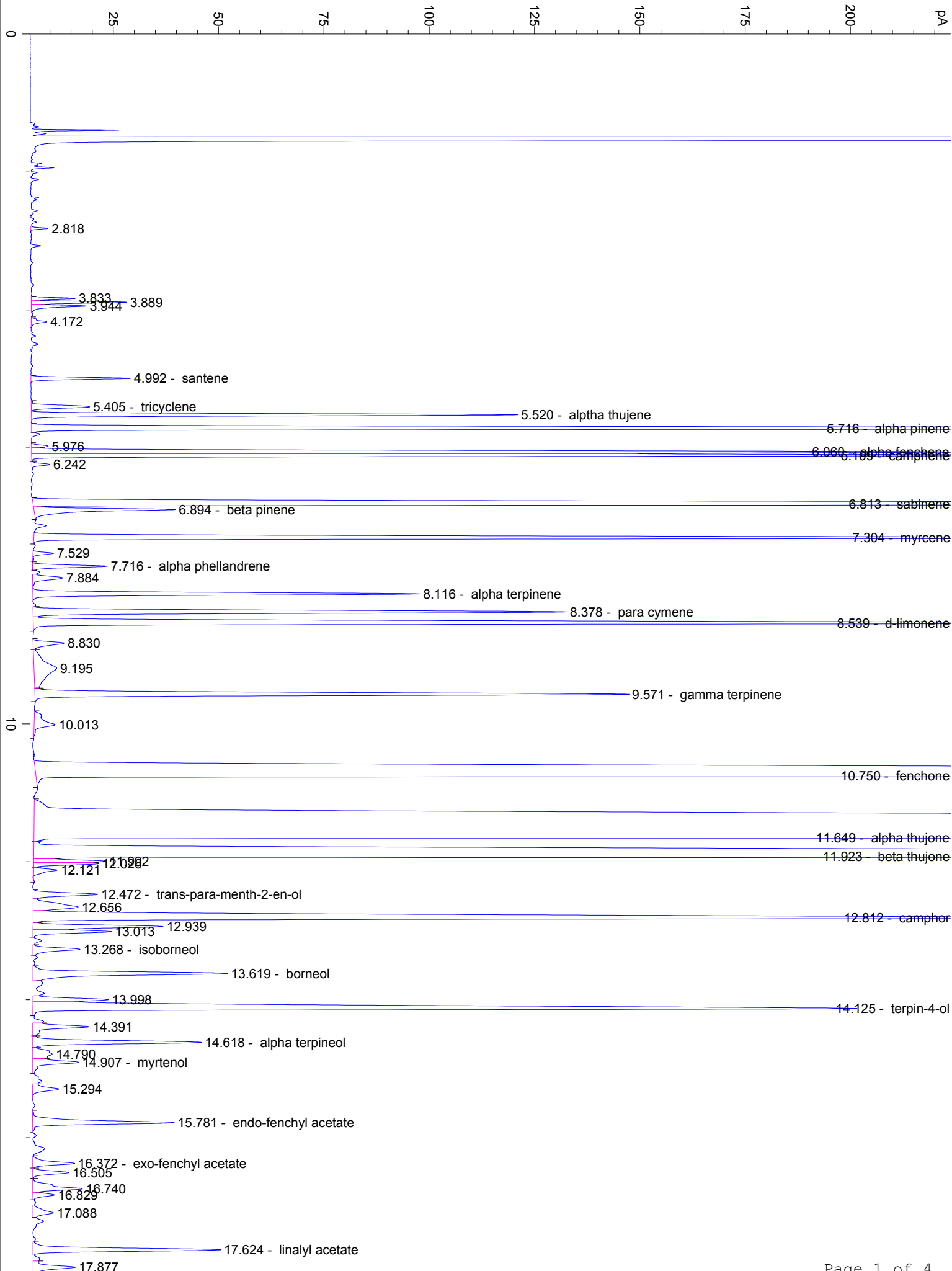
#	Compound Name	Meas. Ret.	Amount	Response	Height	Area	Area %
1		2.82	0.00	6.53	4.11	6.53	0.02
2		3.83	0.00	17.62	10.41	17.62	0.04
3		3.89	0.00	44.32	22.54	44.32	0.10
4		3.94	0.00	29.93	13.00	29.93	0.07
5		4.17	0.00	11.16	3.69	11.16	0.03
6	santene	4.99	0.00	50.99	23.60	50.99	0.12
7	tricyclene	5.40	0.00	41.74	13.84	41.74	0.10
8	alpha thujene	5.52	0.00	263.40	115.37	263.40	0.61
9	alpha pinene	5.72	100.00	922.34	393.16	922.34	2.12
10		5.98	0.00	8.92	3.97	8.92	0.02
11	alpha fenchene	6.06	100.00	563.16	220.57	563.16	1.29
12	camphene	6.11	0.00	566.14	257.17	566.14	1.30
13		6.24	0.00	10.37	4.24	10.37	0.02
14	sabinene	6.81	0.00	1624.32	587.66	1624.32	3.73
15	beta pinene	6.89	100.00	101.88	33.54	101.88	0.23
16	myrcene	7.30	100.00	736.59	290.70	736.59	1.69
17		7.53	0.00	12.59	4.90	12.59	0.03
18	alpha phellandrene	7.72	0.00	46.76	17.77	46.76	0.11
19		7.88	0.00	27.87	7.16	27.87	0.06
20	alpha terpinene	8.12	0.00	247.53	91.78	247.53	0.57
21	para cymene	8.38	0.00	383.55	126.61	383.55	0.88
22	d-limonene	8.54	0.00	825.05	283.95	825.05	1.90
23		8.83	0.00	28.15	7.35	28.15	0.06
24		9.19	0.00	87.09	5.38	87.09	0.20
25	gamma terpinene	9.57	100.00	426.66	140.93	426.66	0.98
26		10.01	0.00	36.64	4.99	36.64	0.08
27	fenchone	10.75	0.00	5700.83	884.19	5700.83	13.10
28	alpha thujone	11.65	0.00	21700.33	1676.53	21700.33	49.86
29	beta thujone	11.92	0.00	4149.08	756.73	4149.08	9.53
30		11.99	0.00	42.98	17.04	42.98	0.10
31		12.03	0.00	34.55	15.37	34.55	0.08
32		12.12	0.00	19.11	5.58	19.11	0.04
33	trans-para-menth-2-en-ol	12.47	0.00	51.71	15.31	51.71	0.12
34		12.66	0.00	61.00	10.71	61.00	0.14
35	camphor	12.81	0.00	957.62	255.16	957.62	2.20
36		12.94	0.00	94.02	30.87	94.02	0.22
37		13.01	0.00	56.24	18.61	56.24	0.13

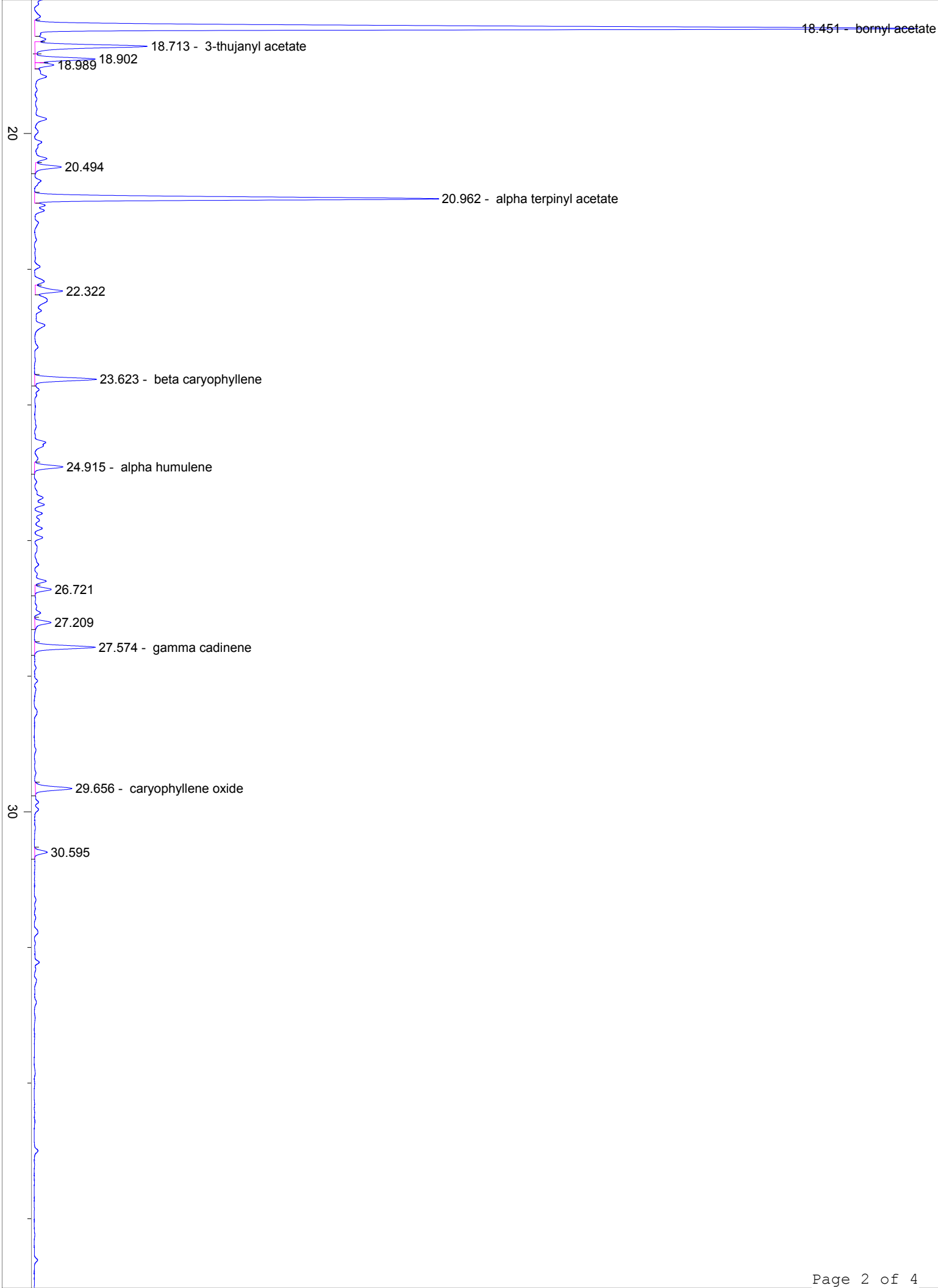
3276-041315

Instrument 6890

C:\HPCHEM\2\DATA\2017\
32760000.DCedar Leaf (Wildcrafted)
3276-041315
Canada
thuja occidentalis
Sample/CH2CL2: 0.10g/0.31g
Injection: 0.2uLHP-5 5% Phenyl Methyl Siloxane
30.000m
250.000um
0.250um4/4/2017 10:10:23 AM
4/4/2017 10:10:23 AM4/4/2017
11:26:18 AM

#	Compound Name	Meas. Ret.	Amount	Response	Height	Area	Area %
38	isoborneol	13.27	0.00	39.31	11.16	39.31	0.09
39	borneol	13.62	0.00	171.57	46.19	171.57	0.39
40		14.00	0.00	55.88	17.92	55.88	0.13
41	terpin-4-ol	14.13	100.00	735.73	195.52	735.73	1.69
42		14.39	0.00	51.12	13.36	51.12	0.12
43	alpha terpineol	14.62	100.00	132.76	40.02	132.76	0.31
44		14.79	0.00	32.95	4.64	32.95	0.08
45	myrtenol	14.91	0.00	44.86	10.89	44.86	0.10
46		15.29	0.00	26.40	6.20	26.40	0.06
47	endo-fenchyl acetate	15.78	0.00	124.98	33.58	124.98	0.29
48	exo-fenchyl acetate	16.37	0.00	36.61	9.89	36.61	0.08
49		16.51	0.00	29.03	8.55	29.03	0.07
50		16.74	0.00	51.39	11.75	51.39	0.12
51		16.83	0.00	17.02	5.11	17.02	0.04
52		17.09	0.00	24.51	4.85	24.51	0.06
53	linalyl acetate	17.62	100.00	146.81	44.48	146.81	0.34
54		17.88	0.00	41.14	10.00	41.14	0.09
55	bornyl acetate	18.45	0.00	825.76	212.94	825.76	1.90
56	3-thujanyl acetate	18.71	0.00	98.39	27.14	98.39	0.23
57		18.90	0.00	47.62	14.49	47.62	0.11
58		18.99	0.00	15.53	4.49	15.53	0.04
59		20.49	0.00	22.32	6.23	22.32	0.05
60	alpha terpinyl acetate	20.96	0.00	329.47	97.42	329.47	0.76
61		22.32	0.00	26.88	6.58	26.88	0.06
62	beta caryophyllene	23.62	0.00	52.57	14.87	52.57	0.12
63	alpha humulene	24.91	0.00	24.33	6.82	24.33	0.06
64		26.72	0.00	13.80	3.91	13.80	0.03
65		27.21	0.00	14.91	3.91	14.91	0.03
66	gamma cadinene	27.57	0.00	52.60	14.61	52.60	0.12
67	caryophyllene oxide	29.66	0.00	34.01	8.80	34.01	0.08
68		30.60	0.00	11.02	3.03	11.02	0.03
69	rimuene	40.03	0.00	102.79	27.06	102.79	0.24
70	beyerene	40.88	0.00	103.48	26.62	103.48	0.24





40.029 - rimuene

40.876 - beyerene

50

60

70

min