

Citronella Org

HP-5 5% Phenyl Methyl Siloxane

3311-KAEA

30.000m

India

250.000um

Cymbopogon Nardus

0.250um

Sample/Solvent: 0.06g/0.6g

Injection Amount: 0.2uL

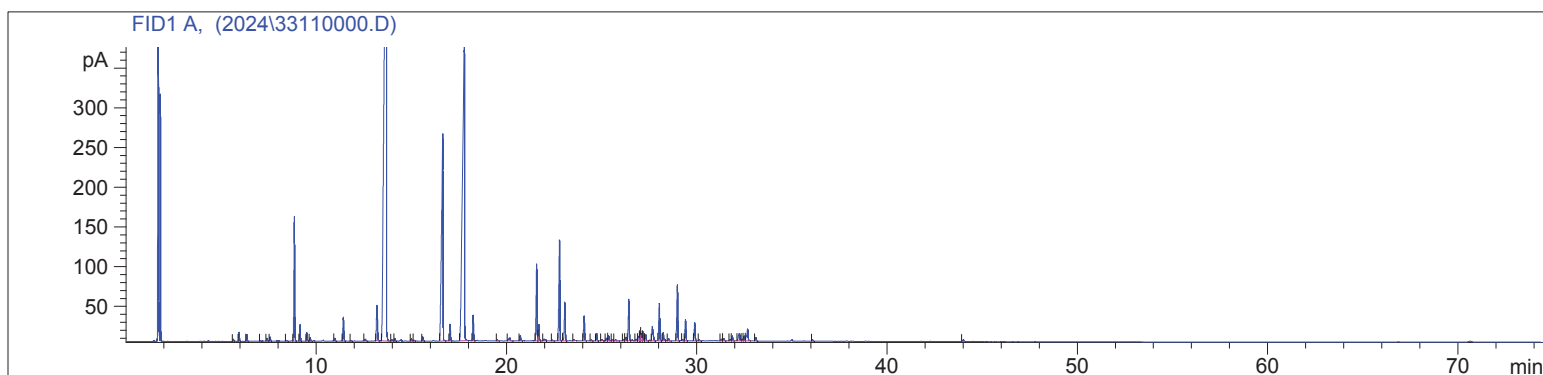
20:1 Split Ratio

11/18/2024 9:55:10 AM

11/18/2024

11/18/2024 9:55:10 AM

12:03:36 PM



#	Compound Name	Meas. Ret.	Amount	Response	Height	Area	Area %
1		5.64	0.00	5.62	2.55	5.62	0.04
2		5.94	0.00	26.22	11.66	26.22	0.20
3		6.35	0.00	19.14	8.06	19.14	0.14
4		7.05	0.00	2.15	0.93	2.15	0.02
5	Sabinene	7.41	0.00	9.54	3.57	9.54	0.07
6	Beta Pinene	7.57	0.00	13.73	5.30	13.73	0.10
7		8.44	0.00	3.19	0.96	3.19	0.02
8	D-Limonene	8.84	0.00	439.12	156.95	439.12	3.30
9	Cis-Beta Ocimene	9.14	0.00	54.08	20.41	54.08	0.41
10	Trans-Beta Ocimene	9.51	0.00	26.38	10.05	26.38	0.20
11		9.69	0.00	12.15	4.37	12.15	0.09
12		10.99	0.00	10.41	3.50	10.41	0.08
13	Linalool	11.43	0.00	94.18	29.96	94.18	0.71
14		11.84	0.00	2.84	0.93	2.84	0.02
15		12.58	0.00	10.08	2.25	10.08	0.08
16	Camphor	13.20	0.00	171.56	44.58	171.56	1.29
17	Citronellal	13.69	0.00	5249.33	700.34	5249.33	39.42
18	Borneol	13.98	0.00	7.89	1.34	7.89	0.06
19		14.14	0.00	9.40	2.94	9.40	0.07
20	Alpha Terpineol	15.01	0.00	9.29	2.80	9.29	0.07
21		15.13	0.00	2.86	1.02	2.86	0.02
22		15.60	0.00	16.35	5.26	16.35	0.12
23	Citronellol	16.66	0.00	1464.80	259.44	1464.80	11.00
24	Neral	17.04	0.00	66.47	20.81	66.47	0.50
25	Geraniol	17.79	0.00	2835.19	376.18	2835.19	21.29
26	Geranial	18.26	0.00	99.59	32.09	99.59	0.75
27		19.53	0.00	4.57	1.36	4.57	0.03
28		20.18	0.00	23.80	3.94	23.80	0.18
29		20.73	0.00	23.19	6.55	23.19	0.17
30	Citronellyl Acetate	21.59	0.00	323.14	96.01	323.14	2.43
31		21.70	0.00	80.52	20.45	80.52	0.60
32		21.99	0.00	11.86	2.23	11.86	0.09
33		22.41	0.00	4.21	1.23	4.21	0.03
34	Geranyl Acetate	22.79	0.00	457.79	126.16	457.79	3.44
35		23.08	0.00	172.96	48.75	172.96	1.30
36		23.56	0.00	5.54	1.72	5.54	0.04
37	Beta Caryophyllene	24.09	0.00	113.45	31.29	113.45	0.85
38		24.46	0.00	3.93	1.12	3.93	0.03
39		24.74	0.00	30.83	9.25	30.83	0.23
40		25.02	0.00	6.25	1.78	6.25	0.05

3311-KAEA

Instrument 6890

C:\HPCHEM\2\DATA\2024\
33110000.D

Citronella Org

HP-5 5% Phenyl Methyl Siloxane

3311-KAEA

30.000m

India

250.000um

Cymbopogon Nardus

0.250um

Sample/Solvent: 0.06g/0.6g

Injection Amount: 0.2uL

20:1 Split Ratio

11/18/2024 9:55:10 AM

11/18/2024

11/18/2024 9:55:10 AM

12:03:36 PM

#	Compound Name	Meas. Ret.	Amount	Response	Height	Area	Area %
41		25.26	0.00	12.02	3.15	12.02	0.09
42		25.38	0.00	22.78	6.31	22.78	0.17
43		25.58	0.00	5.90	1.82	5.90	0.04
44		25.74	0.00	6.12	1.32	6.12	0.05
45		26.16	0.00	5.73	1.62	5.73	0.04
46		26.28	0.00	16.36	4.44	16.36	0.12
47		26.44	0.00	184.23	51.83	184.23	1.38
48		26.82	0.00	7.58	2.05	7.58	0.06
49		26.95	0.00	18.63	5.56	18.63	0.14
50		27.03	0.00	37.74	10.60	37.74	0.28
51		27.08	0.00	31.21	9.36	31.21	0.23
52		27.18	0.00	41.01	11.45	41.01	0.31
53		27.32	0.00	28.09	8.00	28.09	0.21
54		27.67	0.00	85.35	18.18	85.35	0.64
55	Germacrene D	28.04	0.00	167.77	47.14	167.77	1.26
56		28.24	0.00	36.93	10.15	36.93	0.28
57		28.53	0.00	10.54	2.98	10.54	0.08
58		28.99	0.00	259.34	70.49	259.34	1.95
59		29.27	0.00	4.37	1.31	4.37	0.03
60		29.41	0.00	87.14	26.82	87.14	0.65
61		29.90	0.00	81.95	23.01	81.95	0.62
62		30.13	0.00	4.57	1.27	4.57	0.03
63		31.29	0.00	7.36	2.02	7.36	0.06
64		31.42	0.00	11.13	2.96	11.13	0.08
65		31.76	0.00	6.52	1.66	6.52	0.05
66		31.87	0.00	22.69	6.16	22.69	0.17
67		32.24	0.00	50.60	9.18	50.60	0.38
68		32.39	0.00	6.94	1.98	6.94	0.05
69		32.50	0.00	21.35	5.90	21.35	0.16
70		32.68	0.00	75.78	14.67	75.78	0.57
71		33.11	0.00	16.44	4.49	16.44	0.12
72		36.09	0.00	6.91	2.01	6.91	0.05
73		44.00	0.00	10.07	2.51	10.07	0.08

