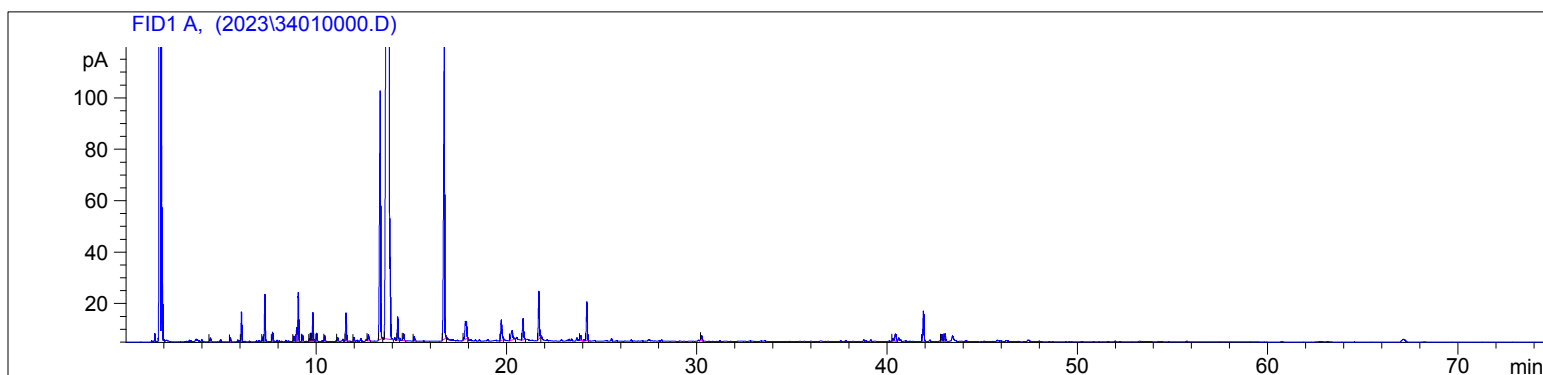


3401

Instrument 6890

C:\HPCHEM\2\DATA\2023\  
34010000.DEucalyptus Citriodora Organic  
EO3401-EAHN  
Madagascar  
Eucalyptus citriodora  
Sample/Solvent: 0.11g/0.51g  
Injection Amount: 0.2uL  
15:1 Split RatioHP-5 5% Phenyl Methyl Siloxane  
30.000m  
250.000um  
0.250um5/22/2023 9:25:32 AM  
5/22/2023 9:25:32 AM5/22/2023  
11:02:43 AM

#	Compound Name	Meas. Ret.	Amount	Response	Height	Area	Area %
1		4.44	0.00	5.28	1.46	5.28	0.07
2		5.48	0.00	3.86	1.63	3.86	0.05
3	alpha pinene	6.06	0.00	28.66	11.44	28.66	0.40
4	sabinene	7.18	0.00	4.44	1.79	4.44	0.06
5	beta pinene	7.29	0.00	49.18	18.30	49.18	0.69
6	myrcene	7.70	0.00	9.95	3.63	9.95	0.14
7	para cymene	8.82	0.00	5.84	2.10	5.84	0.08
8	d-limonene	8.97	0.00	15.57	5.54	15.57	0.22
9	1,8-cineol	9.05	0.00	57.34	19.03	57.34	0.81
10	cis-beta ocimene	9.28	0.00	6.70	2.41	6.70	0.09
11		9.65	0.00	2.88	1.11	2.88	0.04
12	trans-beta ocimene	9.73	0.00	9.26	3.23	9.26	0.13
13		9.83	0.00	32.03	11.15	32.03	0.45
14	gamma terpinene	10.04	0.00	9.33	3.18	9.33	0.13
15		10.45	0.00	6.33	2.23	6.33	0.09
16		11.13	0.00	4.56	1.49	4.56	0.06
17	linalool	11.58	0.00	33.95	10.92	33.95	0.48
18		11.99	0.00	4.78	1.53	4.78	0.07
19		12.75	0.00	10.36	2.31	10.36	0.15
20	isopulegol	13.37	0.00	403.77	96.53	403.77	5.68
21	citronellal	13.85	0.00	5552.64	736.93	5552.64	78.14
22		14.29	0.00	25.23	8.88	25.23	0.36
23		14.60	0.00	9.58	2.54	9.58	0.13
24		15.16	0.00	5.82	1.77	5.82	0.08
25	citronellol	16.74	0.00	450.69	119.69	450.69	6.34
26	geraniol	17.84	0.00	44.87	6.89	44.87	0.63
27		19.73	0.00	35.43	7.95	35.43	0.50
28		20.30	0.00	24.38	3.65	24.38	0.34
29		20.88	0.00	32.38	8.12	32.38	0.46
30	citronellyl acetate	21.71	0.00	65.32	18.59	65.32	0.92
31		23.91	0.00	6.66	1.90	6.66	0.09
32	beta caryophyllene	24.23	0.00	52.68	15.04	52.68	0.74
33		30.27	0.00	7.42	1.92	7.42	0.10
34		40.44	0.00	19.99	2.72	19.99	0.28
35		41.91	0.00	47.99	11.81	47.99	0.68
36		42.88	0.00	9.54	2.61	9.54	0.13
37		43.04	0.00	11.62	2.89	11.62	0.16



Area: 44.8748

