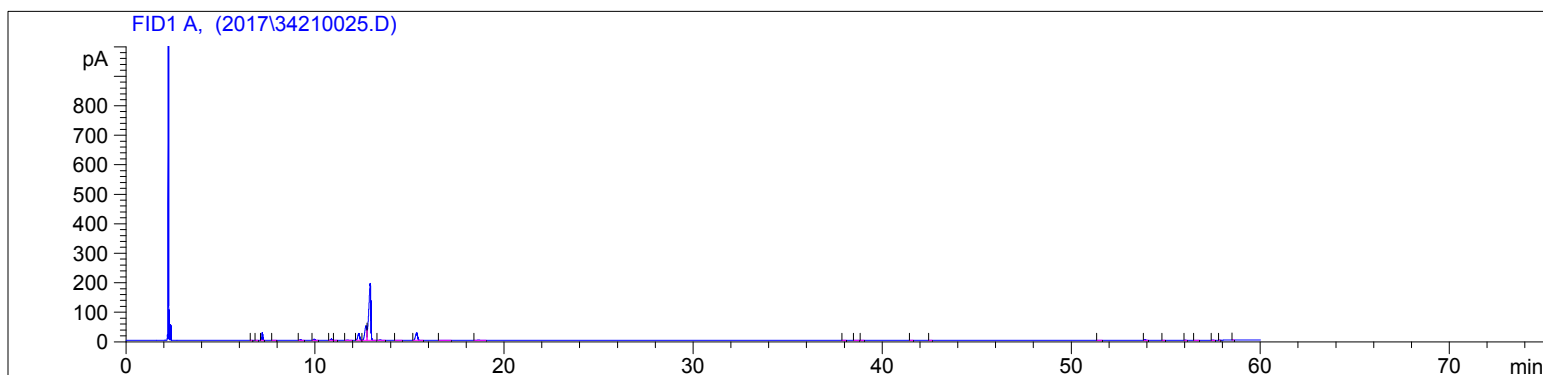


Eucalyptus Globulus (Organic)
3421-KKBIZ
India
eucalyptus globulus
Sample/CH4: 0.04g/0.54g
Injection: 0.2uL

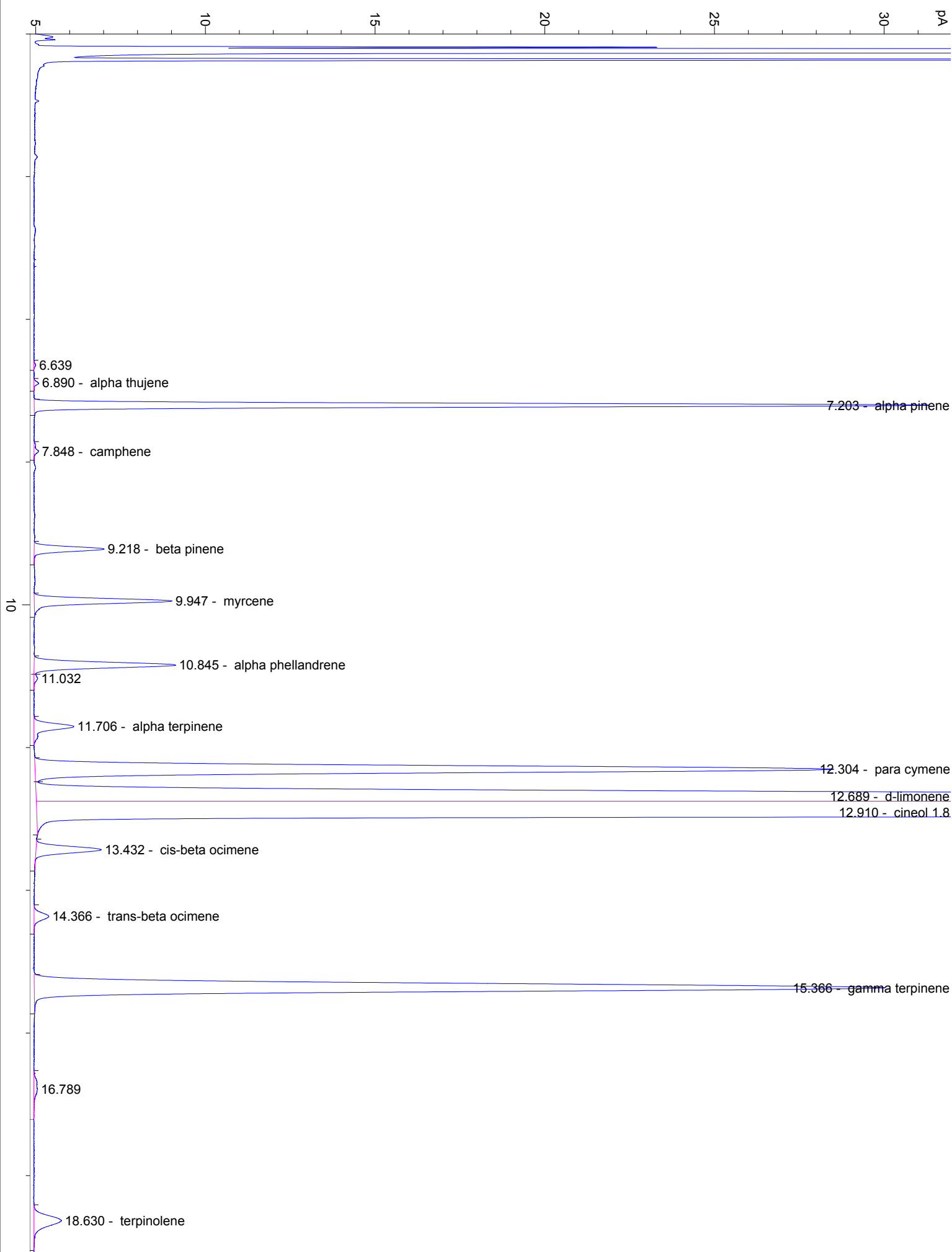
HP-5 5% Phenyl Methyl Siloxane
30.000m
250.000um
0.250um

11/29/2019 2:27:43 PM
11/29/2019 2:27:43 PM

11/29/2019
4:05:30 PM



#	Compound Name	Meas. Ret.	Amount	Response	Height	Area	Area %
1		6.64	0.00	0.22	0.06	0.22	0.01
2	alpha thujene	6.89	0.00	0.49	0.14	0.49	0.02
3	alpha pinene	7.20	27.23	96.99	26.33	96.99	4.08
4	camphene	7.85	3.02	0.71	0.13	0.71	0.03
5	sabinene	0.00	0.00	0.00	0.00	0.00	0.00
6	beta pinene	9.22	100.10	9.73	2.06	9.73	0.41
7	myrcene	9.95	100.25	20.49	4.06	20.49	0.86
8	alpha phellandrene	10.84	100.43	22.97	4.16	22.97	0.97
9		11.03	0.00	0.61	0.11	0.61	0.03
10	alpha terpinene	11.71	100.15	7.65	1.17	7.65	0.32
11	para cymene	12.30	100.03	159.08	23.47	159.08	6.70
12	d-limonene	12.69	100.04	376.25	48.43	376.25	15.84
13	cineol 1.8	12.91	100.01	1450.14	191.84	1450.14	61.06
14	cis-beta ocimene	13.43	99.96	12.08	1.92	12.08	0.51
15	trans-beta ocimene	14.37	99.84	3.09	0.43	3.09	0.13
16	gamma terpinene	15.37	100.00	188.85	24.92	188.85	7.95
17		16.79	0.00	1.58	0.10	1.58	0.07
18	terpinolene	18.63	100.13	8.34	0.81	8.34	0.35
19	trans-pinocarveol	0.00	0.00	0.00	0.00	0.00	0.00
20	camphor	0.00	0.00	0.00	0.00	0.00	0.00
21	terpin-4-ol	0.00	0.00	0.00	0.00	0.00	0.00
22	alpha terpineol	0.00	0.00	0.00	0.00	0.00	0.00
23		37.98	0.00	0.37	0.07	0.37	0.02
24		38.58	0.00	0.55	0.11	0.55	0.02
25		38.93	0.00	0.31	0.06	0.31	0.01
26		41.53	0.00	0.32	0.05	0.32	0.01
27		42.52	0.00	0.26	0.07	0.26	0.01
28		51.45	0.00	0.90	0.16	0.90	0.04
29		53.89	0.00	8.38	2.07	8.38	0.35
30		54.86	0.00	0.59	0.18	0.59	0.02
31		56.02	0.00	1.86	0.62	1.86	0.08
32		56.66	0.00	0.43	0.05	0.43	0.02
33		57.46	0.00	0.69	0.15	0.69	0.03
34		57.85	0.00	0.43	0.17	0.43	0.02
35		58.58	0.00	0.53	0.17	0.53	0.02



20

30

