

3422

Instrument 6890

C:\HPCHEM\2\DATA\2023\
34220000.D

Eucalyptus Globulus Conventional

HP-5 5% Phenyl Methyl Siloxane

3422-DBGN

30.000m

Spain

250.000um

Eucalyptus globulus

0.250um

Sample/Solvent: 0.08g/0.50g

Injection Amount: 0.2uL

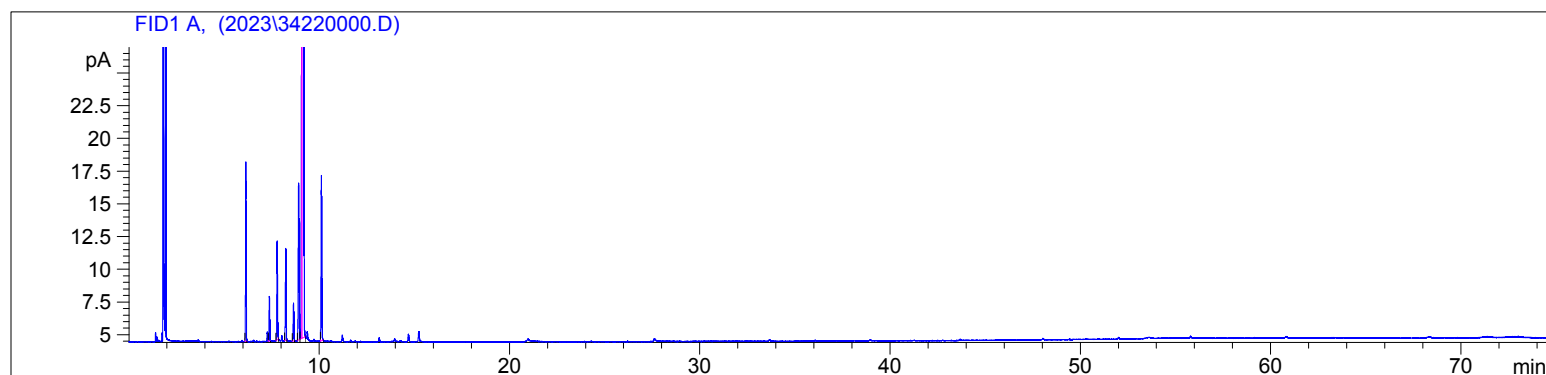
15:1 Split Ratio

5/2/2023 11:34:11 AM

5/2/2023

5/2/2023 11:34:11 AM

2:00:27 PM



#	Compound Name	Meas. Ret.	Amount	Response	Height	Area	Area %
1	alpha pinene	6.14	0.00	30.02	13.70	30.02	2.27
2	beta pinene	7.37	0.00	8.27	3.41	8.27	0.62
3	myrcene	7.78	0.00	18.55	7.55	18.55	1.40
4		8.23	0.00	17.89	7.03	17.89	1.35
5		8.64	0.00	7.52	2.89	7.52	0.57
6	para cymene	8.91	0.00	34.77	11.98	34.77	2.62
7	d-limonene	9.07	0.00	71.98	26.97	71.98	5.43
8	1,8-cineol	9.17	0.00	1101.37	352.92	1101.37	83.12
9	gamma terpinene	10.12	0.00	34.64	12.63	34.64	2.61

