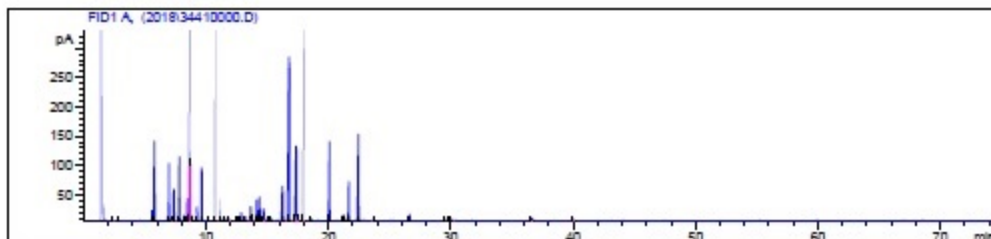


Eucalyptus Staigeriana Org. HP-5 5% Phenyl Methyl Siloxane  
 3441-EEZGX 30.000um  
 Brazil 250.000um  
 eucalyptus staigeriana 0.250um  
 Sample/Solvent: 0.06g/0.62g  
 Injection: 0.2uL  
 15:1 Split Ratio

5/8/2018 2:51:29 PM  
 5/8/2018 2:51:29 PM

1/15/2019  
 3:15:29 PM



#	Compound Name	Meas. Ret.	Amount	Response	Height	Area	Area %
1		0.00	0.00	0.00	0.00	0.00	0.00
2	Alpha Thujene	0.00	0.00	0.00	0.00	0.00	0.00
3	Alpha Pinene	0.00	0.00	0.00	0.00	0.00	0.00
4	Sabinene	7.21	16.77	9.41	3.46	9.41	0.07
5	Beta Pinene	7.37	156.33	135.36	53.54	135.36	1.07
6	Myrcene	7.80	270.27	279.53	108.78	279.53	2.21
7	Alpha Phellandrene	8.20	37.46	24.43	8.97	24.43	0.19
8	Delta-3-Carene	8.68	255.70	3230.42	747.47	3230.42	25.56
9	Para-Cymene	8.91	11.37	27.09	10.97	27.09	0.21
10	D-Limonene	0.00	0.00	0.00	0.00	0.00	0.00
11	1,8 Cineol	9.27	34.40	60.71	23.38	60.71	0.48
12	Gamma Terpinene	10.14	0.17	4.35	1.53	4.35	0.03
13		0.00	0.00	0.00	0.00	0.00	0.00
14	Alpha Terpinolene	11.17	23.74	107.33	37.03	107.33	0.85
15	Linalool	11.59	39.51	6.70	2.20	6.70	0.05
16		11.93	126.98	9.79	2.14	9.79	0.08
17	Menth-2-en-1-ol <trans-para	12.49	18.47	8.59	2.56	8.59	0.07
18	Camphor	13.20	67.06	22.45	7.45	22.45	0.18
19		13.66	1483.50	74.92	24.25	74.92	0.59
20	Terpin-4-ol	14.70	1.89	96.48	20.23	96.48	0.76
21	Citronellol	15.08	87.06	10.75	2.62	10.75	0.09
22	Alpha Terpineol	15.32	3.94	14.32	3.95	14.32	0.11
23		16.26	1990.68	273.75	58.20	273.75	2.17
24	Alpha-Terpinyl Acetate	21.68	3161.67	218.51	66.25	218.51	1.73
25	Eugenol	22.46	9409.10	538.56	146.96	538.56	4.26
26	Geranyl Acetate	0.00	0.00	0.00	0.00	0.00	0.00
27	Alpha Copaene	0.00	0.00	0.00	0.00	0.00	0.00
28		23.72	32.12	12.66	3.53	12.66	0.10
29		0.00	0.00	0.00	0.00	0.00	0.00
30	Gamma Caryophyllene	0.00	0.00	0.00	0.00	0.00	0.00
31	Alpha Gurrunene	0.00	0.00	0.00	0.00	0.00	0.00
32	Beta Caryophyllene	0.00	0.00	0.00	0.00	0.00	0.00

Eucalyptus Staigeriana Org.

HP-5 5% Phenyl Methyl Siloxane

3441-EEZGX

30.00Cm

Brazil

250.000um

eucalyptus staigeriana

0.250um

Sample/Solvent: 0.06g/0.62g

Injection: 0.2uL

15:1 Split Ratio

5/8/2018 2:51:29 PM

1/15/2019

5/8/2018 2:51:29 PM

3:15:29 PM

#	Compound Name	Meas. Ret.	Amount	Response	Height	Area	Area %
33		0.00	0.00	0.00	0.00	0.00	0.00
34		0.00	0.00	0.00	0.00	0.00	0.00
35	Alpha Humulene	0.00	0.00	0.00	0.00	0.00	0.00
36	Aromandendrene	0.00	0.00	0.00	0.00	0.00	0.00
37		0.00	0.00	0.00	0.00	0.00	0.00
38		26.64	496.11	44.82	10.80	44.82	0.35
39	Allo-Aromandrene	0.00	0.00	0.00	0.00	0.00	0.00
40		0.00	0.00	0.00	0.00	0.00	0.00
41	Germacrene D	0.00	0.00	0.00	0.00	0.00	0.00
42		0.00	0.00	0.00	0.00	0.00	0.00
43	Viridiflorene	0.00	0.00	0.00	0.00	0.00	0.00
44	Eugenyl Acetate	0.00	0.00	0.00	0.00	0.00	0.00
45		29.58	101.09	7.44	1.82	7.44	0.06
46		29.60	88.14	7.58	1.82	7.58	0.06
47		30.08	101.69	6.47	1.39	6.47	0.05
48	Globulol	0.00	0.00	0.00	0.00	0.00	0.00
49		0.00	0.00	0.00	0.00	0.00	0.00
50		0.00	0.00	0.00	0.00	0.00	0.00
51		0.00	0.00	0.00	0.00	0.00	0.00
52		0.00	0.00	0.00	0.00	0.00	0.00
53		0.00	0.00	0.00	0.00	0.00	0.00
54		0.00	0.00	0.00	0.00	0.00	0.00
55		36.63	468.30	42.77	4.58	42.77	0.34



