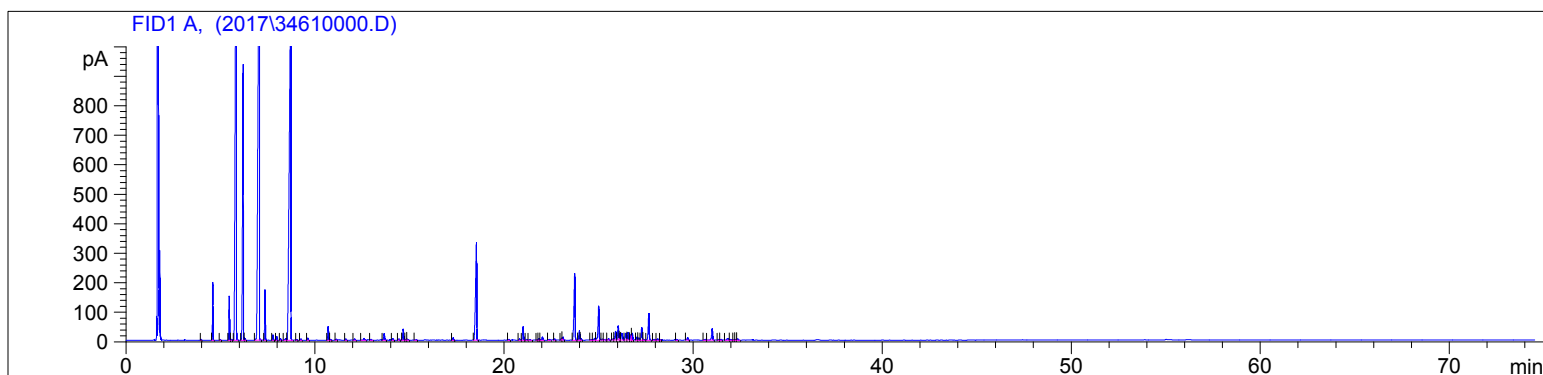


Fir, Silver (Organic)  
3461-FFZBU  
Bulgaria  
abies alba  
Sample/CH4: 0.12g/0.37g  
Injection: 0.2uL

HP-5 5% Phenyl Methyl Siloxane  
30.000m  
250.000um  
0.250um

6/5/2017 3:36:15 PM  
6/5/2017 3:36:15 PM

6/5/2017  
4:52:58 PM



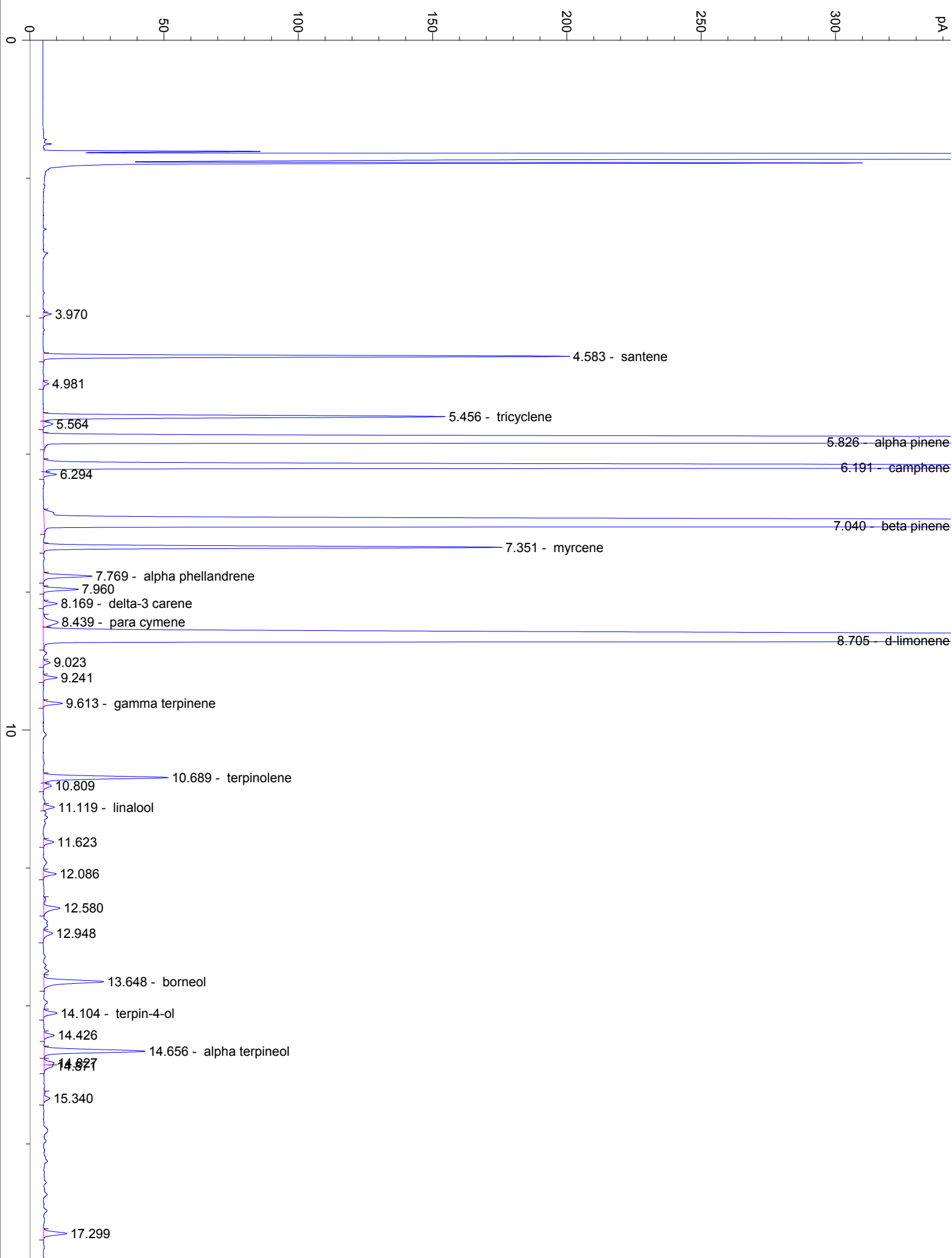
#	Compound Name	Meas. Ret.	Amount	Response	Height	Area	Area %
1		3.97	0.00	5.91	3.03	5.91	0.02
2	santene	4.58	0.00	377.52	195.92	377.52	1.23
3		4.98	0.00	5.48	2.11	5.48	0.02
4	tricyclene	5.46	100.00	368.68	149.69	368.68	1.20
5		5.56	0.00	10.58	3.58	10.58	0.03
6	alpha pinene	5.83	95.98	6911.63	1792.18	6911.63	22.57
7	camphene	6.19	100.00	2675.14	933.88	2675.14	8.74
8		6.29	0.00	11.04	4.84	11.04	0.04
9	beta pinene	7.04	123.19	7347.10	1591.53	7347.10	23.99
10	myrcene	7.35	115.90	389.30	170.55	389.30	1.27
11	alpha phellandrene	7.77	100.00	47.97	18.06	47.97	0.16
12		7.96	0.00	32.67	13.03	32.67	0.11
13	delta-3 carene	8.17	0.00	13.71	5.13	13.71	0.04
14	para cymene	8.44	0.00	27.38	5.54	27.38	0.09
15	d-limonene	8.70	100.00	6737.51	1215.33	6737.51	22.00
16		9.02	0.00	6.36	2.51	6.36	0.02
17		9.24	0.00	12.63	5.09	12.63	0.04
18	gamma terpinene	9.61	0.00	18.57	7.15	18.57	0.06
19	terpinolene	10.69	100.00	134.95	46.47	134.95	0.44
20		10.81	0.00	9.27	3.01	9.27	0.03
21	linalool	11.12	100.00	12.39	4.08	12.39	0.04
22		11.62	0.00	11.16	3.72	11.16	0.04
23		12.09	0.00	14.38	4.71	14.38	0.05
24		12.58	0.00	24.63	6.01	24.63	0.08
25		12.95	0.00	12.66	3.37	12.66	0.04
26	borneol	13.65	0.00	78.41	22.31	78.41	0.26
27	terpin-4-ol	14.10	100.00	15.89	4.91	15.89	0.05
28		14.43	0.00	11.98	3.72	11.98	0.04
29	alpha terpineol	14.66	100.00	121.90	37.57	121.90	0.40
30		14.83	0.00	12.09	3.78	12.09	0.04
31		14.87	0.00	10.08	3.34	10.08	0.03
32		15.34	0.00	8.80	2.22	8.80	0.03
33		17.30	0.00	27.94	8.55	27.94	0.09
34	bornyl acetate	18.53	100.00	1448.34	330.53	1448.34	4.73
35	sabinyl acetate	0.00	0.00	0.00	0.00	0.00	0.00
36		20.25	0.00	7.61	2.49	7.61	0.02
37		20.81	0.00	14.46	4.39	14.46	0.05

3461-FFZBU

Instrument 6890

C:\HPCHEM\2\DATA\2017\  
34610000.DFir, Silver (Organic)  
3461-FFZBU  
Bulgaria  
abies alba  
Sample/CH4: 0.12g/0.37g  
Injection: 0.2uLHP-5 5% Phenyl Methyl Siloxane  
30.000m  
250.000um  
0.250um6/5/2017 3:36:15 PM  
6/5/2017 3:36:15 PM6/5/2017  
4:52:58 PM

#	Compound Name	Meas. Ret.	Amount	Response	Height	Area	Area %
38	terpinyl acetate	21.00	0.00	154.33	44.78	154.33	0.50
39		21.19	0.00	8.35	2.49	8.35	0.03
40		21.35	0.00	6.71	2.02	6.71	0.02
41		21.76	0.00	7.57	2.34	7.57	0.02
42		21.84	0.00	16.72	4.84	16.72	0.05
43		22.02	0.00	39.47	10.82	39.47	0.13
44		22.38	0.00	9.93	2.37	9.93	0.03
45		22.67	0.00	12.70	3.70	12.70	0.04
46		23.03	0.00	23.95	7.16	23.95	0.08
47		23.11	0.00	37.96	10.28	37.96	0.12
48	beta caryophyllene	23.73	0.00	943.72	226.38	943.72	3.08
49		23.97	0.00	111.86	32.01	111.86	0.37
50		24.06	0.00	14.61	4.49	14.61	0.05
51		24.61	0.00	10.35	2.59	10.35	0.03
52		24.78	0.00	29.13	6.48	29.13	0.10
53	alpha humulene	25.00	0.00	456.78	115.70	456.78	1.49
54		25.19	0.00	14.32	4.30	14.32	0.05
55		25.34	0.00	13.09	2.89	13.09	0.04
56		25.52	0.00	18.40	5.04	18.40	0.06
57		25.76	0.00	17.10	4.54	17.10	0.06
58	allo aromadendrene	25.89	0.00	117.74	29.77	117.74	0.38
59	gamma muurolene	26.03	0.00	178.89	47.65	178.89	0.58
60		26.11	0.00	26.11	8.44	26.11	0.09
61		26.22	0.00	112.86	23.38	112.86	0.37
62		26.42	0.00	93.44	23.02	93.44	0.31
63		26.55	0.00	96.32	25.79	96.32	0.31
64		26.71	0.00	67.74	19.33	67.74	0.22
65		26.77	0.00	89.62	23.65	89.62	0.29
66		27.02	0.00	37.87	10.77	37.87	0.12
67		27.12	0.00	26.31	7.47	26.31	0.09
68	gamma cadinene	27.27	0.00	151.16	42.03	151.16	0.49
69		27.36	0.00	12.87	3.30	12.87	0.04
70	delta cadinene	27.65	0.00	341.01	90.05	341.01	1.11
71		27.93	0.00	13.32	3.50	13.32	0.04
72		28.11	0.00	16.10	4.46	16.10	0.05
73		28.29	0.00	7.19	2.17	7.19	0.02
74		29.12	0.00	9.06	2.59	9.06	0.03
75	caryophyllene oxide	29.70	0.00	36.03	8.64	36.03	0.12
76		30.64	0.00	12.97	3.27	12.97	0.04
77	alpha cedrol	31.00	0.00	154.45	38.51	154.45	0.50
78		31.34	0.00	8.46	2.46	8.46	0.03
79		31.47	0.00	9.22	2.59	9.22	0.03
80		31.83	0.00	32.07	5.27	32.07	0.10
81		31.97	0.00	11.34	2.37	11.34	0.04
82		32.17	0.00	9.38	2.28	9.38	0.03
83		32.25	0.00	12.79	3.27	12.79	0.04
84		32.35	0.00	17.68	4.40	17.68	0.06





40

50

60

70

min