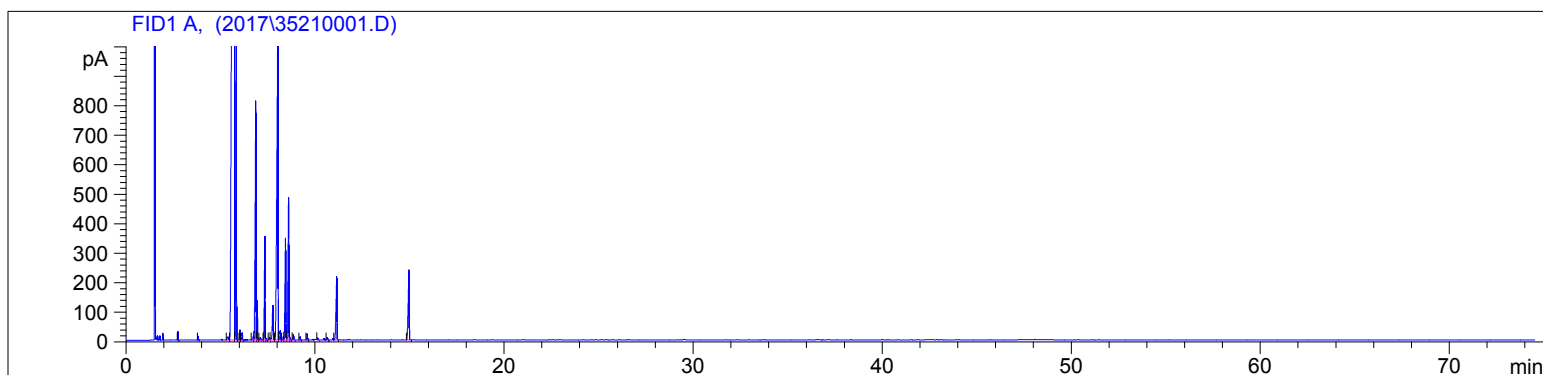


Frankincense (Organic)
3521-CCACU
India
boswellia serrata
Sample/CH2CL2: 0.12g/0.35g
Injection: 0.2uL

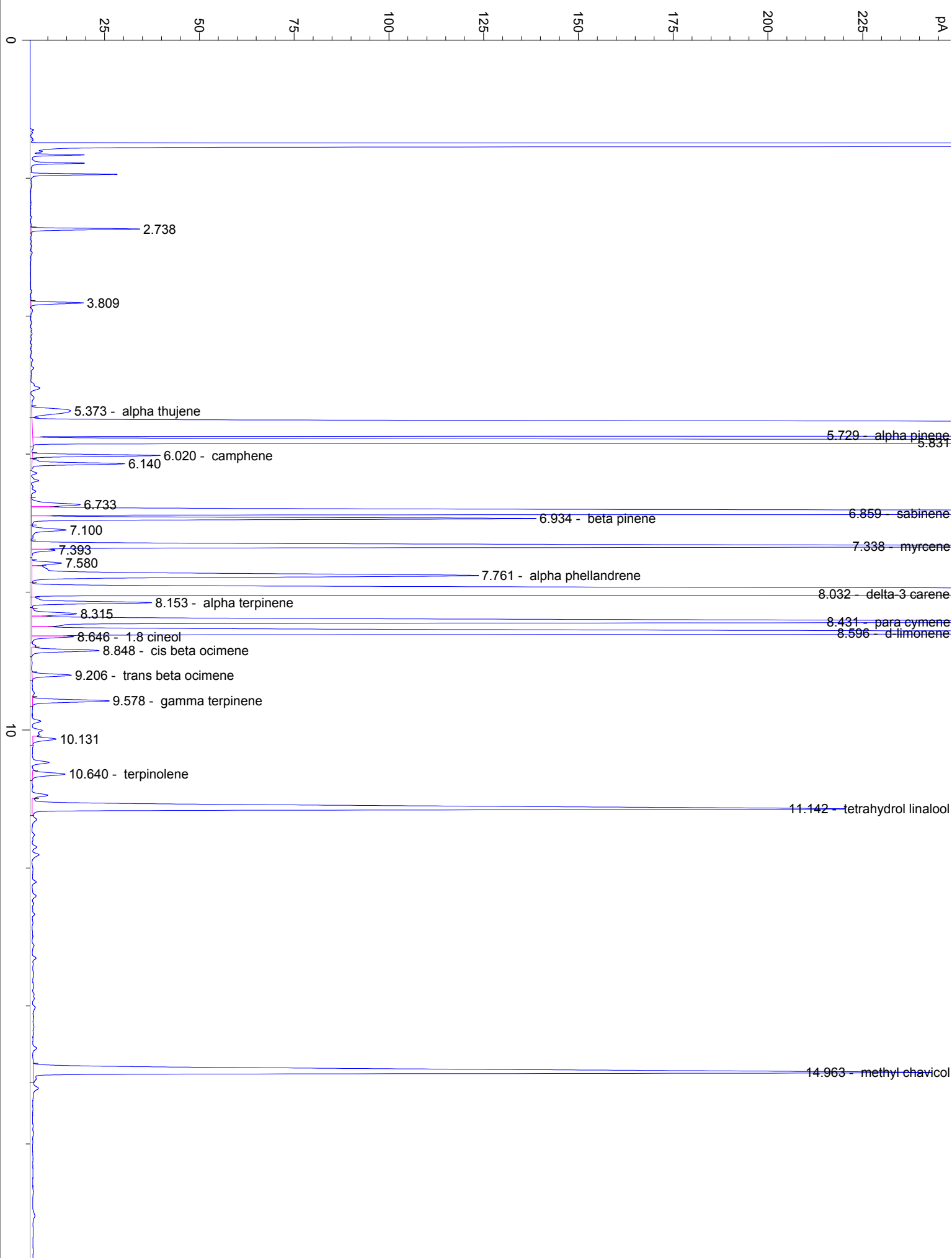
HP-5 5% Phenyl Methyl Siloxane
30.000m
250.000um
0.250um

3/13/2017 1:29:16 PM
3/13/2017 1:29:16 PM

5/30/2017
3:47:53 PM



#	Compound Name	Meas. Ret.	Amount	Response	Height	Area	Area %
1		2.74	0.00	45.15	28.67	45.15	0.10
2		3.81	0.00	26.25	13.86	26.25	0.06
3	alpha thujene	5.37	100.00	55.01	10.26	55.01	0.12
4	alpha pinene	5.73	283.60	28536.72	3975.99	28536.72	62.92
5	camphene	6.02	100.00	65.13	33.73	65.13	0.14
6		6.14	26.90	54.20	24.49	54.20	0.12
7		6.73	100.00	38.16	12.94	38.16	0.08
8	sabinene	6.86	202.65	2461.06	809.48	2461.06	5.43
9	beta pinene	6.93	55.96	276.14	133.12	276.14	0.61
10		7.10	100.00	27.93	9.19	27.93	0.06
11	myrcene	7.34	88.75	886.87	349.93	886.87	1.96
12		7.39	100.00	12.56	6.21	12.56	0.03
13		7.58	100.00	20.77	7.86	20.77	0.05
14	alpha phellandrene	7.76	80.79	421.15	117.73	421.15	0.93
15	delta-3 carene	8.03	1476.39	4977.01	1142.86	4977.01	10.97
16	alpha terpinene	8.15	80.27	75.92	31.64	75.92	0.17
17		8.31	100.00	32.56	11.87	32.56	0.07
18	para cymene	8.43	126.75	1014.14	345.22	1014.14	2.24
19	d-limonene	8.60	47.23	1483.25	482.67	1483.25	3.27
20	1.8 cineol	8.65	36.41	21.04	11.09	21.04	0.05
21	cis beta ocimene	8.85	59.29	45.19	17.79	45.19	0.10
22	trans beta ocimene	9.21	65.44	26.40	10.39	26.40	0.06
23	gamma terpinene	9.58	197.74	53.11	20.24	53.11	0.12
24		10.13	100.00	18.46	6.19	18.46	0.04
25	terpinolene	10.64	64.74	26.44	8.61	26.44	0.06
26	tetrahydrol linalool	11.14	1183.87	787.88	214.35	787.88	1.74
27	methyl chavicol	14.96	1259.36	922.87	237.15	922.87	2.03



20

30

40

50

60

70

min