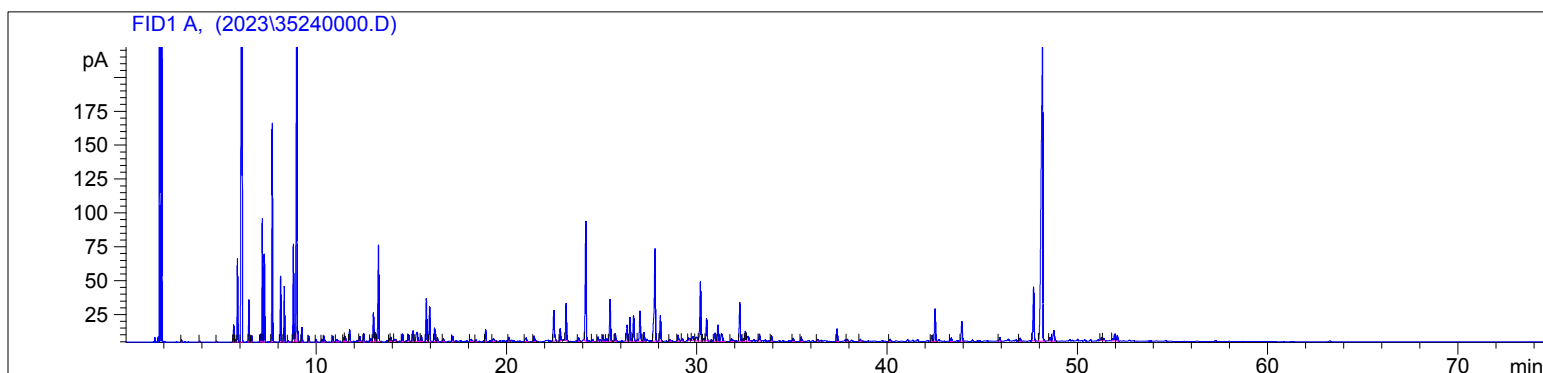


Frankincense Carteri CO2 Conv.  
3524-IBFN  
Somalia  
Boswellia carterii  
Sample/Solvent: 0.07g/0.52g  
Injection Amount: 0.2uL  
20:1 Split Ratio

HP-5 5% Phenyl Methyl Siloxane  
30.000m  
250.000um  
0.250um

9/26/2023 1:13:54 PM  
9/26/2023 1:13:54 PM

9/27/2023  
11:19:26 AM



#	Compound Name	Meas. Ret.	Amount	Response	Height	Area	Area %
1		2.91	0.00	2.14	1.63	2.14	0.02
2		3.88	0.00	1.09	0.67	1.09	0.01
3		4.76	0.00	1.31	0.68	1.31	0.01
4		5.65	0.00	27.41	12.62	27.41	0.26
5		5.74	0.00	3.95	1.82	3.95	0.04
6	alpha thujene	5.85	0.00	141.67	61.60	141.67	1.36
7	alpha pinene	6.09	0.00	3233.86	1062.92	3233.86	31.05
8		6.45	0.00	70.94	31.13	70.94	0.68
9		6.60	0.00	10.76	4.70	10.76	0.10
10		7.07	0.00	12.64	5.43	12.64	0.12
11	sabinene	7.16	0.00	217.24	90.89	217.24	2.09
12	beta pinene	7.27	0.00	155.64	64.82	155.64	1.49
13	myrcene	7.68	0.00	387.63	160.87	387.63	3.72
14	alpha phellandrene	8.12	0.00	121.45	48.47	121.45	1.17
15	delta-3-carene	8.31	0.00	109.12	40.92	109.12	1.05
16		8.52	0.00	2.65	1.05	2.65	0.03
17	para cymene	8.79	0.00	196.39	71.57	196.39	1.89
18	d-limonene	8.97	0.00	884.14	300.53	884.14	8.49
19		9.03	0.00	17.09	8.03	17.09	0.16
20	cis-beta ocimene	9.24	0.00	27.20	10.59	27.20	0.26
21	trans beta ocimene	9.61	0.00	12.19	4.48	12.19	0.12
22	gamma terpinene	10.00	0.00	5.31	1.96	5.31	0.05
23		10.30	0.00	5.99	2.16	5.99	0.06
24		10.42	0.00	13.25	4.26	13.25	0.13
25		10.88	0.00	12.56	4.32	12.56	0.12
26	terpinolene	11.08	0.00	8.36	1.76	8.36	0.08
27		11.45	0.00	8.47	2.90	8.47	0.08
28	tetrahydrol linalool	11.52	0.00	17.23	4.20	17.23	0.17
29	cis-thujone	11.76	0.00	27.88	8.88	27.88	0.27
30		12.30	0.00	10.77	3.40	10.77	0.10
31		12.51	0.00	18.29	5.84	18.29	0.18
32		12.87	0.00	7.79	2.35	7.79	0.07
33		13.01	0.00	68.38	21.43	68.38	0.66
34		13.12	0.00	22.33	6.82	22.33	0.21
35	trans-verbenol	13.28	0.00	230.79	70.97	230.79	2.22
36		13.85	0.00	6.83	2.29	6.83	0.07
37		13.93	0.00	9.97	3.20	9.97	0.10
38		14.13	0.00	7.16	1.43	7.16	0.07
39	terpin-4-ol	14.54	0.00	20.65	5.76	20.65	0.20
40		14.87	0.00	14.36	4.68	14.36	0.14

Frankincense Carteri CO2 Conv.  
3524-IBFN  
Somalia  
Boswellia carterii  
Sample/Solvent: 0.07g/0.52g  
Injection Amount: 0.2uL  
20:1 Split Ratio

HP-5 5% Phenyl Methyl Siloxane  
30.000m  
250.000um  
0.250um

9/26/2023 1:13:54 PM  
9/26/2023 1:13:54 PM

9/27/2023  
11:19:26 AM

#	Compound Name	Meas. Ret.	Amount	Response	Height	Area	Area %
41		15.09	0.00	23.67	7.73	23.67	0.23
42	methyl chavicol	15.32	0.00	41.92	6.80	41.92	0.40
43		15.53	0.00	16.80	4.60	16.80	0.16
44	verbenone	15.79	0.00	104.25	31.65	104.25	1.00
45	ocyl acetate	15.97	0.00	78.21	25.61	78.21	0.75
46		16.23	0.00	33.02	10.06	33.02	0.32
47		16.38	0.00	9.94	2.88	9.94	0.10
48		16.69	0.00	7.07	2.01	7.07	0.07
49		17.18	0.00	14.01	4.09	14.01	0.13
50		18.16	0.00	9.33	1.55	9.33	0.09
51		18.41	0.00	4.16	1.24	4.16	0.04
52		18.91	0.00	28.41	8.70	28.41	0.27
53		19.30	0.00	11.75	1.90	11.75	0.11
54		20.13	0.00	11.13	3.08	11.13	0.11
55		21.04	0.00	15.58	2.85	15.58	0.15
56		21.46	0.00	16.10	3.93	16.10	0.15
57	alpha copaene	22.49	0.00	89.94	22.67	89.94	0.86
58		22.83	0.00	29.50	8.89	29.50	0.28
59	beta elemene	23.14	0.00	93.46	27.50	93.46	0.90
60		23.80	0.00	11.59	2.70	11.59	0.11
61	beta caryphyllene	24.17	0.00	316.13	88.44	316.13	3.03
62		24.53	0.00	4.84	1.51	4.84	0.05
63		24.81	0.00	9.28	2.95	9.28	0.09
64		25.08	0.00	16.60	4.64	16.60	0.16
65		25.28	0.00	8.25	1.92	8.25	0.08
66	cis-thujopsene	25.45	0.00	106.76	30.82	106.76	1.02
67	trans-beta farnesene	25.72	0.00	20.35	5.70	20.35	0.20
68	gamma gurjunene	26.35	0.00	46.92	11.82	46.92	0.45
69	gamma muurolene	26.50	0.00	61.42	17.58	61.42	0.59
70	germacrene D	26.69	0.00	68.47	18.99	68.47	0.66
71	beta selinene	27.02	0.00	91.92	22.30	91.92	0.88
72	cis-beta guaiene	27.24	0.00	22.46	6.36	22.46	0.22
73	cubebol	27.81	0.00	300.11	68.10	300.11	2.88
74	delta cadinene	28.09	0.00	69.37	18.97	69.37	0.67
75		28.59	0.00	4.57	1.37	4.57	0.04
76		29.03	0.00	17.23	4.47	17.23	0.17
77		29.25	0.00	6.79	1.95	6.79	0.07
78		29.58	0.00	5.22	1.67	5.22	0.05
79		29.79	0.00	14.62	2.94	14.62	0.14
80		30.02	0.00	18.81	2.96	18.81	0.18
81	caryophyllene alcohol	30.20	0.00	169.73	44.08	169.73	1.63
82		30.37	0.00	7.75	1.83	7.75	0.07
83	caryophyllene oxide	30.52	0.00	59.96	16.64	59.96	0.58
84		30.97	0.00	26.00	6.02	26.00	0.25
85		31.12	0.00	42.17	11.97	42.17	0.40
86		31.31	0.00	34.53	5.79	34.53	0.33
87		31.83	0.00	11.75	2.00	11.75	0.11
88		32.27	0.00	108.19	28.49	108.19	1.04
89		32.45	0.00	7.02	2.02	7.02	0.07
90		32.56	0.00	27.98	7.45	27.98	0.27
91		32.68	0.00	25.96	3.58	25.96	0.25
92		33.30	0.00	17.68	4.88	17.68	0.17
93		33.93	0.00	15.93	4.41	15.93	0.15
94		35.07	0.00	8.44	2.31	8.44	0.08
95		35.50	0.00	13.01	3.32	13.01	0.12

3524

Instrument 6890

C:\HPCHEM\2\DATA\2023\  
35240000.DFrankincense Carteri CO2 Conv.  
3524-IBFN  
Somalia  
Boswellia carterii  
Sample/Solvent: 0.07g/0.52g  
Injection Amount: 0.2uL  
20:1 Split RatioHP-5 5% Phenyl Methyl Siloxane  
30.000m  
250.000um  
0.250um9/26/2023 1:13:54 PM  
9/26/2023 1:13:54 PM9/27/2023  
11:19:26 AM

#	Compound Name	Meas. Ret.	Amount	Response	Height	Area	Area %
96		36.36	0.00	5.59	1.51	5.59	0.05
97		37.38	0.00	33.15	9.27	33.15	0.32
98		37.90	0.00	4.81	1.42	4.81	0.05
99		38.58	0.00	4.60	1.32	4.60	0.04
100		40.15	0.00	5.86	1.60	5.86	0.06
101		42.35	0.00	15.84	4.49	15.84	0.15
102	cembrene	42.52	0.00	89.07	23.91	89.07	0.86
103		43.36	0.00	10.81	2.46	10.81	0.10
104	cembrenol	43.92	0.00	55.76	14.49	55.76	0.54
105		45.91	0.00	10.32	2.93	10.32	0.10
106		46.99	0.00	8.89	2.46	8.89	0.09
107	incensole	47.69	0.00	152.85	39.61	152.85	1.47
108	incensyl acetate	48.16	0.00	1325.92	222.22	1325.92	12.73
109		48.56	0.00	10.27	2.66	10.27	0.10
110		48.76	0.00	38.65	7.56	38.65	0.37
111		51.26	0.00	7.88	2.34	7.88	0.08
112		51.37	0.00	5.98	1.64	5.98	0.06
113		51.95	0.00	24.76	4.97	24.76	0.24
114		52.09	0.00	16.64	4.05	16.64	0.16



