

3541

Instrument 6890

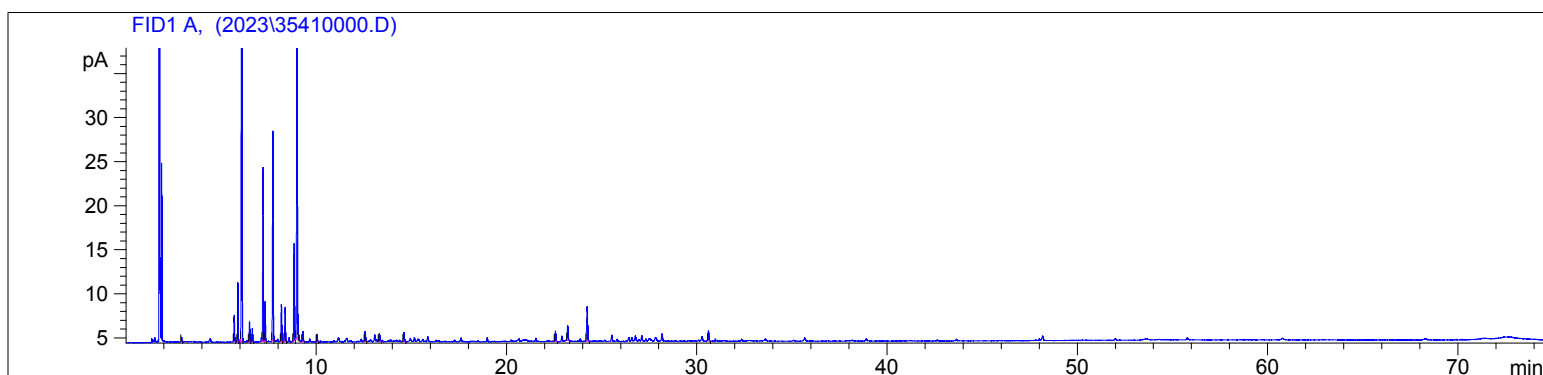
C:\HPCHEM\2\DATA\2023\
35410000.D

Frankincense Carterii Organic
3541-DBZN
Somaliand
Boswellia carterii
Sample/Solvent: 0.09g/0.49g
Injection Amount: 0.2uL
15:1 Split Ratio

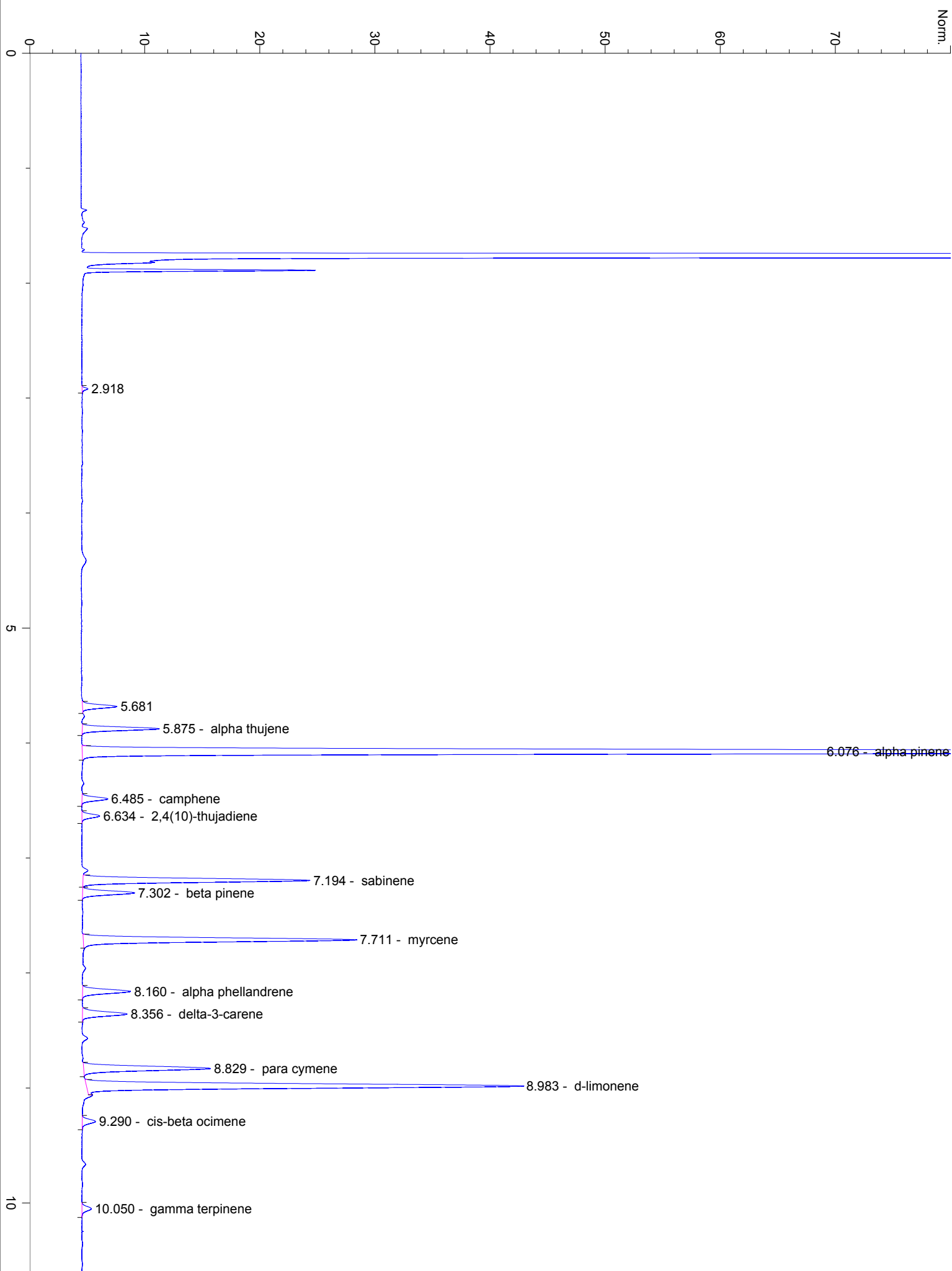
HP-5 5% Phenyl Methyl Siloxane
30.000m
250.000um
0.250um

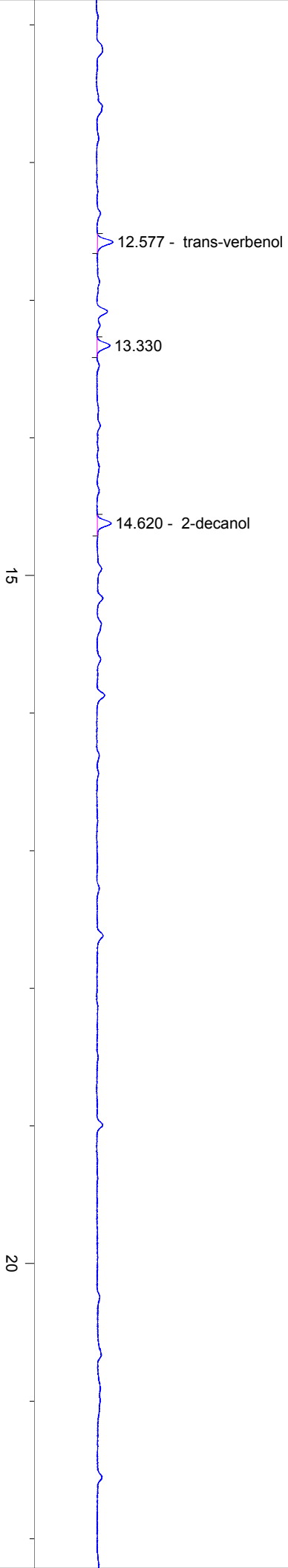
4/20/2023 1:41:40 PM
4/20/2023 1:41:40 PM

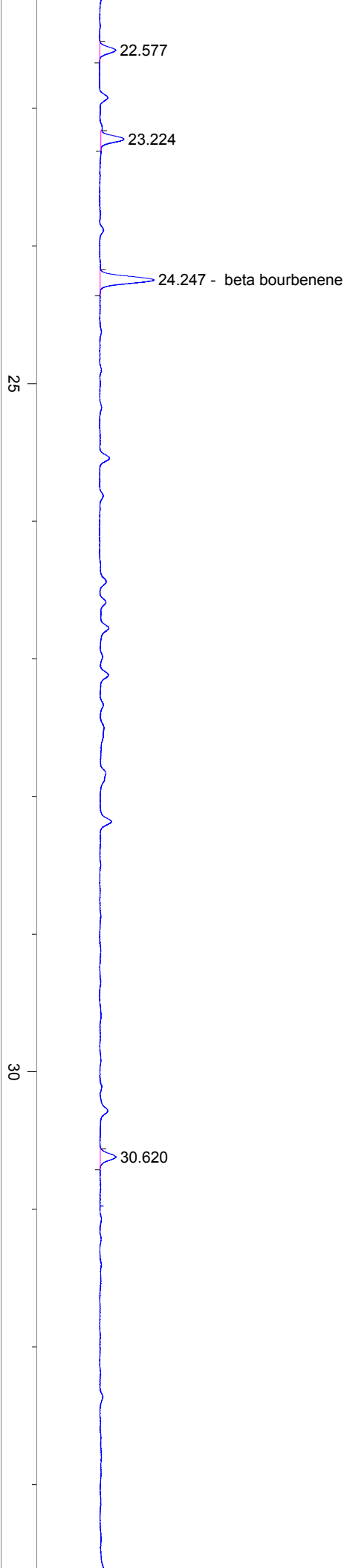
4/24/2023
11:15:23 AM



#	Compound Name	Meas. Ret.	Amount	Response	Height	Area	Area %
1		2.92	0.00	0.79	0.51	0.79	0.12
2		5.68	0.00	6.55	2.98	6.55	0.99
3	alpha thujene	5.88	0.00	14.08	6.68	14.08	2.12
4	alpha pinene	6.08	0.00	324.10	145.29	324.10	48.90
5	camphene	6.49	0.00	5.21	2.24	5.21	0.79
6	2,4(10)-thujadiene	6.63	0.00	3.65	1.55	3.65	0.55
7	sabinene	7.19	0.00	46.42	19.71	46.42	7.00
8	beta pinene	7.30	0.00	11.05	4.52	11.05	1.67
9	myrcene	7.71	0.00	57.35	23.73	57.35	8.65
10	alpha phellandrene	8.16	0.00	10.63	4.17	10.63	1.60
11	delta-3-carene	8.36	0.00	10.36	3.88	10.36	1.56
12	para cymene	8.83	0.00	29.05	11.02	29.05	4.38
13	d-limonene	8.98	0.00	101.02	37.91	101.02	15.24
14	cis-beta ocimene	9.29	0.00	3.05	1.14	3.05	0.46
15	gamma terpinene	10.05	0.00	2.27	0.82	2.27	0.34
16	trans-verbenol	12.58	0.00	3.64	1.12	3.64	0.55
17		13.33	0.00	3.02	0.92	3.02	0.46
18	2-decanol	14.62	0.00	3.28	1.01	3.28	0.49
19		22.58	0.00	3.79	1.15	3.79	0.57
20		23.22	0.00	5.59	1.67	5.59	0.84
21	beta bourbenene	24.25	0.00	13.89	3.91	13.89	2.10
22		30.62	0.00	4.06	1.13	4.06	0.61







35

40

min