

3601

Instrument 6890

C:\HPCHEM\2\DATA\2022\
36010000.D

Geranium Rose

HP-5 5% Phenyl Methyl Siloxane

3601-KAAL

30.000m

Egypt

250.000um

Pelargonium Gravolens

0.250um

Injection Amount: 0.2uL

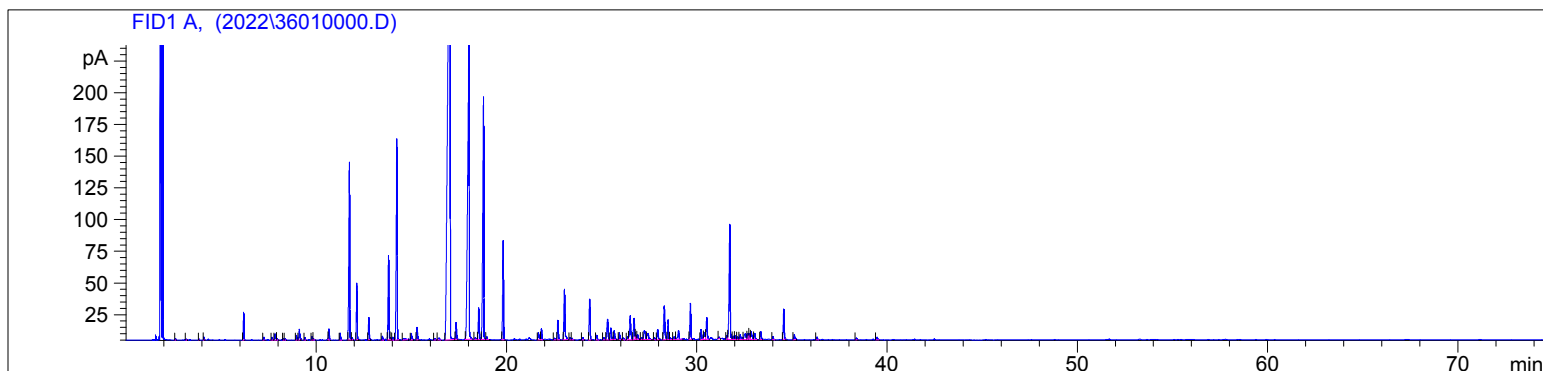
15:1 Split Ratio

11/14/2022 11:54:02 AM

11/14/2022

11/14/2022 11:54:02 AM

2:52:48 PM



#	Compound Name	Meas. Ret.	Amount	Response	Height	Area	Area %
1		2.60	0.00	1.76	1.28	1.76	0.02
2		3.17	0.00	1.90	0.61	1.90	0.02
3		3.84	0.00	1.37	0.84	1.37	0.01
4	alpha pinene	4.09	0.00	4.95	2.49	4.95	0.05
5		6.18	0.00	50.20	21.94	50.20	0.52
6		7.24	0.00	5.80	2.32	5.80	0.06
7	myrcene	7.67	0.00	6.20	2.13	6.20	0.06
8		7.83	0.00	16.98	4.82	16.98	0.18
9		7.94	0.00	2.79	1.04	2.79	0.03
10		8.28	0.00	2.80	1.08	2.80	0.03
11		8.37	0.00	2.71	1.03	2.71	0.03
12	d-limonene	8.95	0.00	9.89	3.70	9.89	0.10
13	1,8 cineol	9.10	0.00	27.27	8.47	27.27	0.28
14	cis-beta ocimene	9.41	0.00	6.47	2.08	6.47	0.07
15	trans beta ocimene	9.79	0.00	7.44	2.69	7.44	0.08
16		9.86	0.00	2.14	0.82	2.14	0.02
17	cis-linalool oxide	10.68	0.00	26.75	8.55	26.75	0.28
18		11.27	0.00	17.81	5.46	17.81	0.19
19	linalool	11.75	0.00	468.13	139.93	468.13	4.87
20		11.89	0.00	5.84	1.77	5.84	0.06
21	cis-rose oxide	12.14	0.00	125.64	44.56	125.64	1.31
22	trans-rose oxide	12.77	0.00	50.82	17.35	50.82	0.53
23	camphor	13.48	0.00	9.45	2.97	9.45	0.10
24	menthone	13.81	0.00	214.25	66.31	214.25	2.23
25		13.91	0.00	5.83	1.87	5.83	0.06
26		14.03	0.00	6.96	2.06	6.96	0.07
27	isomenthone	14.25	0.00	556.67	158.24	556.67	5.79
28		14.65	0.00	6.76	1.01	6.76	0.07
29	cis-pinovarveol	15.00	0.00	18.27	5.16	18.27	0.19
30	alpha terpineol	15.31	0.00	32.51	9.68	32.51	0.34
31		16.24	0.00	4.19	1.23	4.19	0.04
32		16.45	0.00	8.16	1.51	8.16	0.08
33	citronellol	17.04	0.00	3457.93	430.48	3457.93	35.97
34		17.36	0.00	45.28	13.28	45.28	0.47
35	geraniol	18.04	0.00	1321.36	237.42	1321.36	13.74
36	geranial	18.37	0.00	5.85	1.62	5.85	0.06
37		18.55	0.00	86.68	24.97	86.68	0.90
38	citronellyl formate	18.80	0.00	735.10	190.26	735.10	7.65
39	bornyl acetate	18.97	0.00	6.66	2.17	6.66	0.07
40	geranyl formate	19.83	0.00	255.20	78.09	255.20	2.65

3601

Instrument 6890

C:\HPCHEM\2\DATA\2022\
36010000.D

Geranium Rose

HP-5 5% Phenyl Methyl Siloxane

3601-KAAL

30.000m

Egypt

250.000um

Pelargonium Gravolens

0.250um

Injection Amount: 0.2uL

15:1 Split Ratio

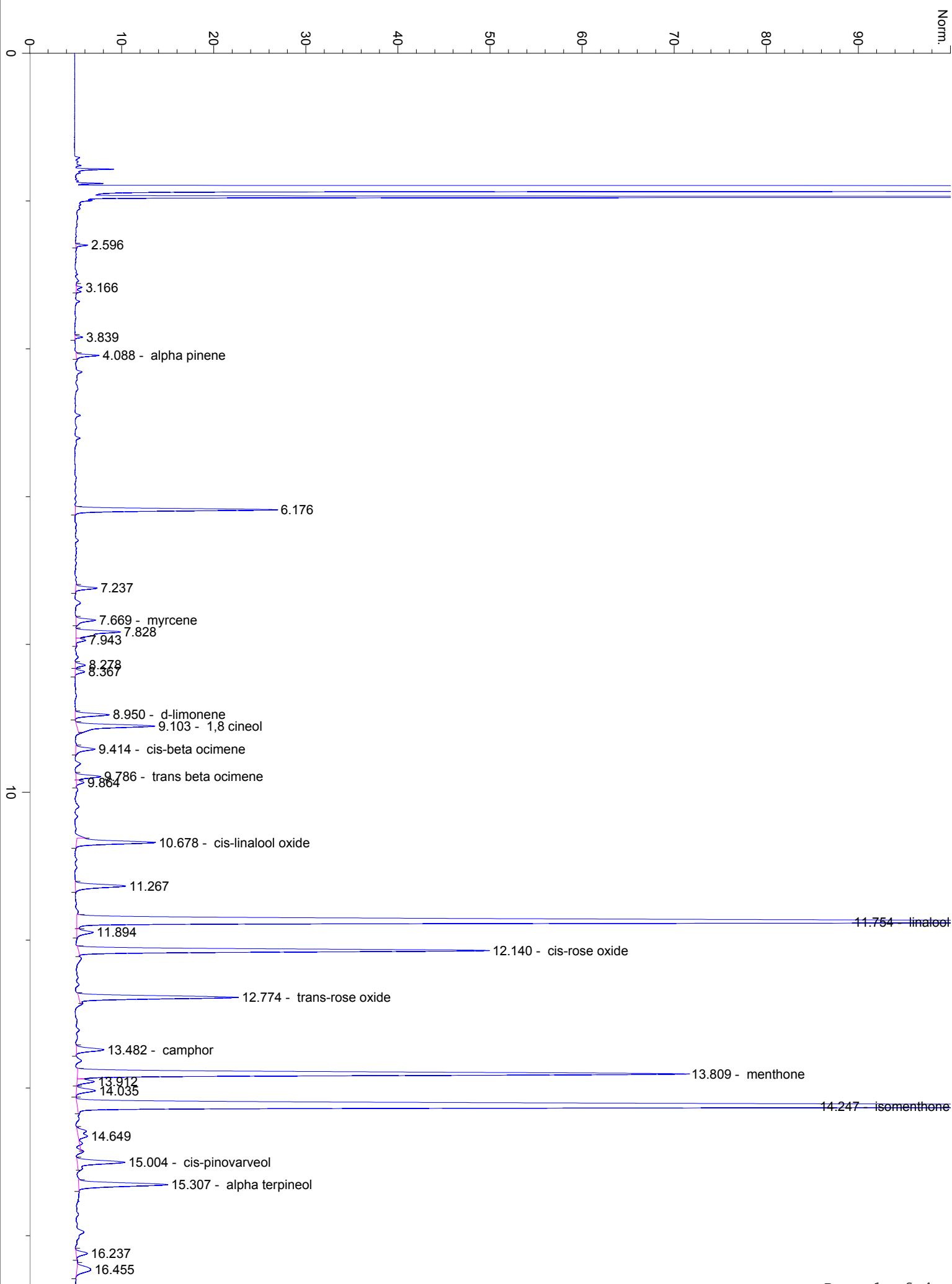
11/14/2022 11:54:02 AM

11/14/2022

11/14/2022 11:54:02 AM

2:52:48 PM

#	Compound Name	Meas. Ret.	Amount	Response	Height	Area	Area %
41	alpha terpinyl acetate	21.69	0.00	23.13	5.50	23.13	0.24
42	eugenol	21.84	0.00	28.44	8.73	28.44	0.30
43		22.53	0.00	4.51	1.18	4.51	0.05
44	alpha copaene	22.71	0.00	53.68	15.31	53.68	0.56
45	geranyl acetate	23.05	0.00	160.00	39.63	160.00	1.66
46	beta caryophyllene	23.35	0.00	5.03	1.61	5.03	0.05
47		23.45	0.00	4.53	1.26	4.53	0.05
48		24.01	0.00	6.01	1.68	6.01	0.06
49		24.38	0.00	115.21	32.07	115.21	1.20
50		24.75	0.00	13.77	3.60	13.77	0.14
51		25.12	0.00	5.81	1.64	5.81	0.06
52	citronellyl propanoate	25.32	0.00	69.32	16.15	69.32	0.72
53		25.49	0.00	34.88	9.13	34.88	0.36
54		25.67	0.00	25.53	7.20	25.53	0.27
55		25.94	0.00	16.40	5.14	16.40	0.17
56		26.15	0.00	4.56	1.39	4.56	0.05
57		26.37	0.00	8.02	2.26	8.02	0.08
58		26.51	0.00	81.94	18.94	81.94	0.85
59	geranyl propanoate	26.71	0.00	62.14	16.66	62.14	0.65
60	germacrene D	26.80	0.00	11.79	3.51	11.79	0.12
61		26.90	0.00	14.54	3.61	14.54	0.15
62		27.10	0.00	5.69	1.59	5.69	0.06
63	gamma cadinene	27.25	0.00	41.33	7.17	41.33	0.43
64		27.45	0.00	27.85	4.87	27.85	0.29
65		27.78	0.00	5.87	1.75	5.87	0.06
66	delta cadinene	27.95	0.00	31.52	8.03	31.52	0.33
67	cis-calamenene	28.30	0.00	116.90	26.56	116.90	1.22
68	citronellyl n-butyrate	28.50	0.00	51.98	15.50	51.98	0.54
69	trans-calamenene	28.61	0.00	6.50	1.23	6.50	0.07
70		28.81	0.00	7.58	2.01	7.58	0.08
71		29.05	0.00	27.47	6.86	27.47	0.29
72	geranyl n-butyrate	29.67	0.00	96.72	28.18	96.72	1.01
73		30.23	0.00	32.58	8.01	32.58	0.34
74		30.40	0.00	23.87	5.53	23.87	0.25
75		30.53	0.00	67.88	16.96	67.88	0.71
76		31.18	0.00	4.91	1.36	4.91	0.05
77	phenethyl tiglate	31.59	0.00	11.44	3.07	11.44	0.12
78	0-epi-gamma-eudesmol	31.74	0.00	364.12	90.52	364.12	3.79
79		31.93	0.00	9.31	2.59	9.31	0.10
80		32.02	0.00	10.13	2.85	10.13	0.11
81		32.15	0.00	7.94	1.99	7.94	0.08
82		32.29	0.00	19.78	3.63	19.78	0.21
83	beta eudesmol	32.56	0.00	31.65	4.53	31.65	0.33
84		32.70	0.00	19.91	4.63	19.91	0.21
85	alpha eudesmol	32.77	0.00	17.09	4.61	17.09	0.18
86		32.87	0.00	31.60	6.08	31.60	0.33
87		33.06	0.00	18.80	4.75	18.80	0.20
88		33.37	0.00	21.56	6.10	21.56	0.22
89		34.01	0.00	8.75	2.53	8.75	0.09
90	geranyl tiglate	34.58	0.00	82.20	23.73	82.20	0.86
91		35.13	0.00	17.05	3.88	17.05	0.18
92		36.33	0.00	8.11	2.19	8.11	0.08
93		38.38	0.00	5.19	1.41	5.19	0.05
94		39.46	0.00	8.57	2.14	8.57	0.09





34.581 - geranyl tiglate

35.132

36.328

38.381

39.465

40

50

