

3601

Instrument 6890

C:\HPCHEM\2\DATA\2023\
36010000.D

Geranium Rose ORG

HP-5 5% Phenyl Methyl Siloxane

3601-LAAN

30.000m

Egypt

250.000um

Pelargonium graveolens var. roseum

0.250um

Sample/Solvent: 0.06g/0.52g

Injection Amount: 0.2uL

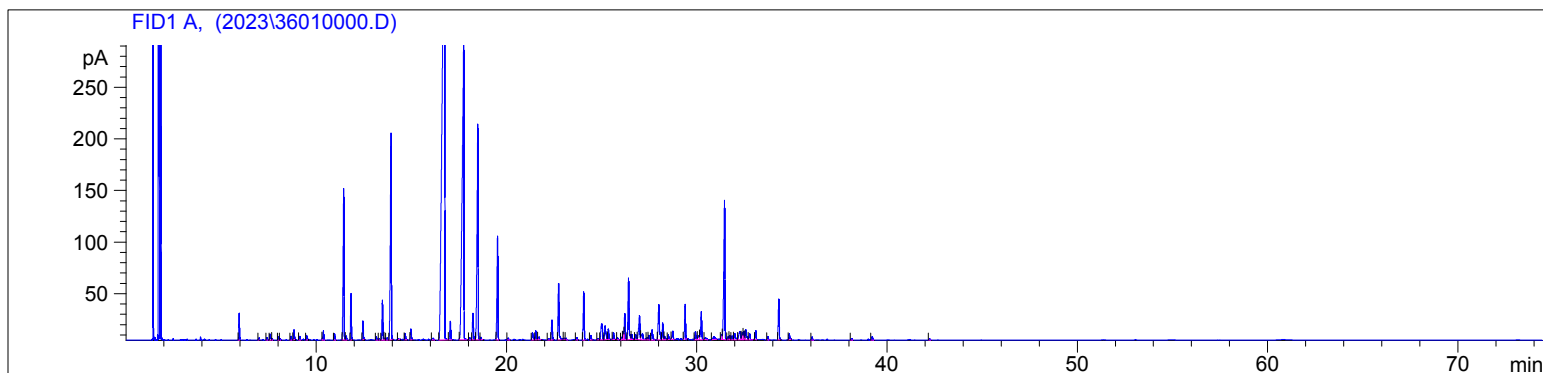
15:1 Split Ratio

12/21/2023 9:15:01 AM

12/21/2023

12/21/2023 9:15:01 AM

2:03:15 PM



#	Compound Name	Meas. Ret.	Amount	Response	Height	Area	Area %
1	alpha pinene	5.94	0.00	59.10	26.11	59.10	0.48
2		6.98	0.00	4.65	2.06	4.65	0.04
3		7.41	0.00	6.04	2.39	6.04	0.05
4	myrcene	7.57	0.00	18.51	5.84	18.51	0.15
5		7.68	0.00	2.21	1.03	2.21	0.02
6		8.01	0.00	8.65	3.45	8.65	0.07
7		8.10	0.00	2.99	1.23	2.99	0.02
8	d-limonene	8.67	0.00	9.32	3.66	9.32	0.08
9	1.8 cineol	8.82	0.00	29.84	9.67	29.84	0.24
10	cis-beta ocimene	9.13	0.00	9.82	3.61	9.82	0.08
11	trans-beta ocimene	9.50	0.00	12.49	4.60	12.49	0.10
12	cis-linalool oxide	10.38	0.00	29.60	8.95	29.60	0.24
13		10.97	0.00	20.15	6.28	20.15	0.17
14	linalool	11.46	0.00	492.63	146.93	492.63	4.04
15		11.58	0.00	12.49	3.99	12.49	0.10
16	cis-rose oxide	11.84	0.00	126.91	44.81	126.91	1.04
17	camphor	12.47	0.00	51.87	17.97	51.87	0.43
18		13.17	0.00	9.66	3.11	9.66	0.08
19		13.32	0.00	4.52	1.33	4.52	0.04
20	menthone	13.49	0.00	120.90	38.66	120.90	0.99
21		13.59	0.00	5.88	1.84	5.88	0.05
22		13.73	0.00	7.52	2.08	7.52	0.06
23	isomenthone	13.94	0.00	740.34	199.76	740.34	6.07
24		14.33	0.00	1.41	0.83	1.41	0.01
25	cis-pinocarveol	14.68	0.00	21.28	6.14	21.28	0.17
26	alpha terpineol	14.99	0.00	36.80	10.77	36.80	0.30
27		16.14	0.00	9.42	1.82	9.42	0.08
28	citronellol	16.76	0.00	4162.00	479.69	4162.00	34.12
29	neral (citral B)	17.05	0.00	59.73	17.83	59.73	0.49
30	geraniol	17.76	0.00	1835.21	290.78	1835.21	15.04
31		18.07	0.00	7.68	2.25	7.68	0.06
32	geranial	18.24	0.00	92.34	25.88	92.34	0.76
33	citronellyl formate	18.50	0.00	834.52	208.49	834.52	6.84
34		18.66	0.00	6.58	2.39	6.58	0.05
35	geranyl formate	19.54	0.00	340.77	100.42	340.77	2.79
36		20.10	0.00	7.77	1.92	7.77	0.06
37	alpha terpinyl acetate	21.37	0.00	30.74	7.08	30.74	0.25
38		21.55	0.00	27.48	8.71	27.48	0.23
39	eugenol	21.72	0.00	10.76	2.56	10.76	0.09
40		22.22	0.00	6.62	1.51	6.62	0.05

3601

Instrument 6890

C:\HPCHEM\2\DATA\2023\
36010000.D

Geranium Rose ORG

HP-5 5% Phenyl Methyl Siloxane

3601-LAAN

30.000m

Egypt

250.000um

Pelargonium gravolens var. roseum

0.250um

Sample/Solvent: 0.06g/0.52g

Injection Amount: 0.2uL

15:1 Split Ratio

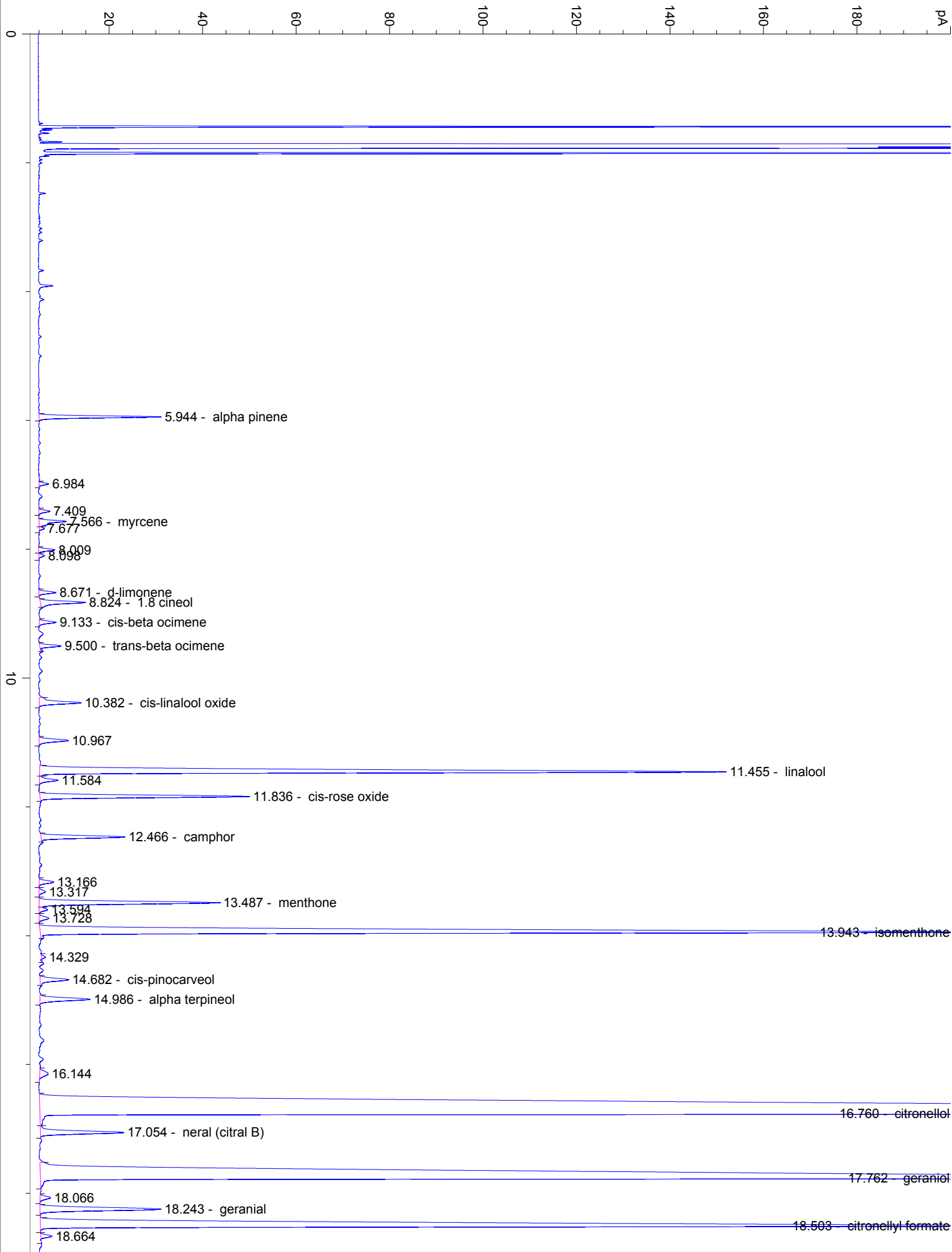
12/21/2023 9:15:01 AM

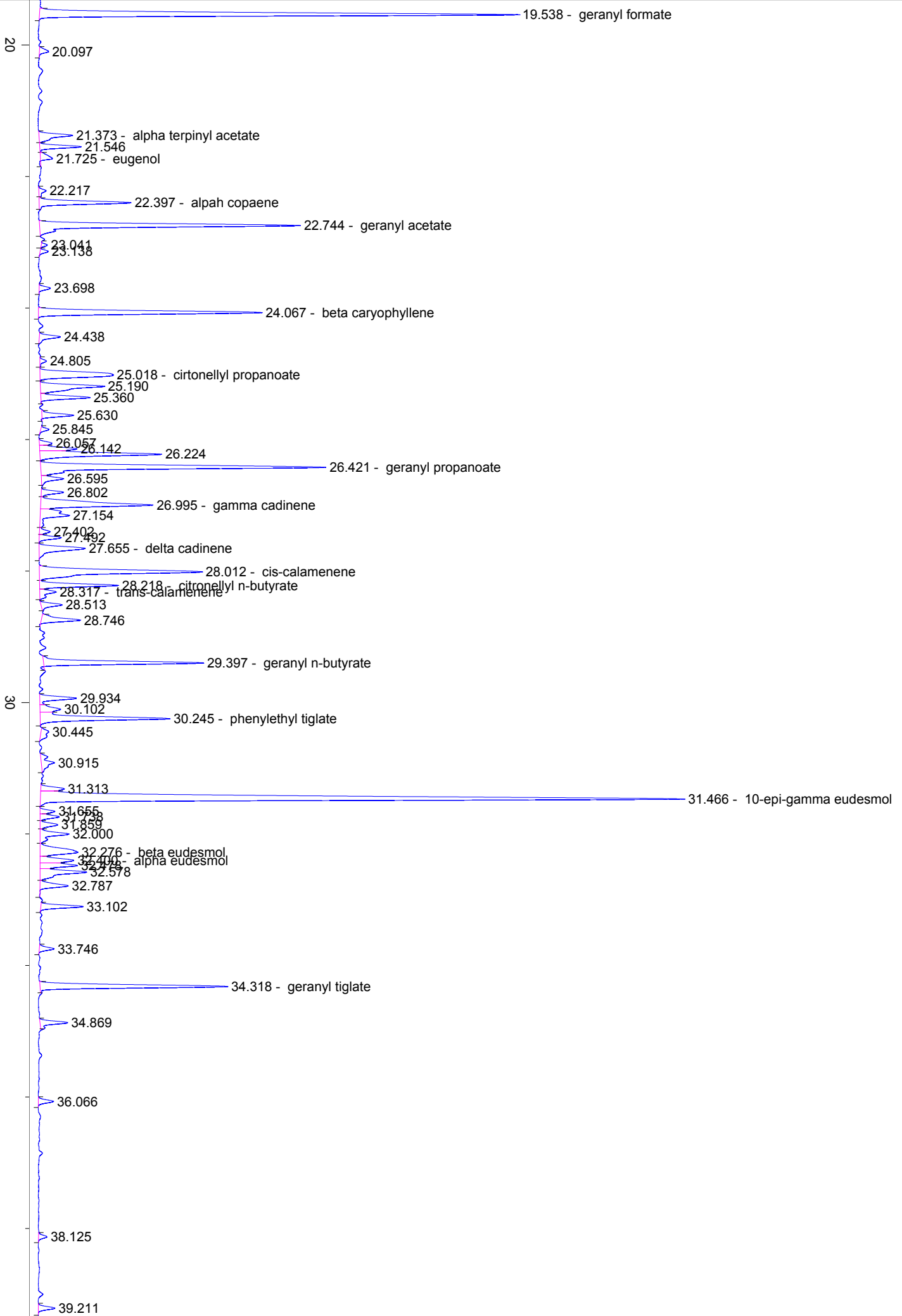
12/21/2023

12/21/2023 9:15:01 AM

2:03:15 PM

#	Compound Name	Meas. Ret.	Amount	Response	Height	Area	Area %
41	alпах copaene	22.40	0.00	67.47	19.26	67.47	0.55
42	geranyl acetate	22.74	0.00	197.00	54.63	197.00	1.61
43		23.04	0.00	3.09	1.25	3.09	0.03
44		23.14	0.00	5.20	1.69	5.20	0.04
45		23.70	0.00	8.14	2.36	8.14	0.07
46	beta caryophyllene	24.07	0.00	167.59	46.83	167.59	1.37
47		24.44	0.00	16.89	4.40	16.89	0.14
48		24.81	0.00	4.95	1.36	4.95	0.04
49	cirtonellyl propanoate	25.02	0.00	86.52	15.33	86.52	0.71
50		25.19	0.00	63.78	13.41	63.78	0.52
51		25.36	0.00	35.40	10.26	35.40	0.29
52		25.63	0.00	21.75	6.65	21.75	0.18
53		25.84	0.00	5.38	1.71	5.38	0.04
54		26.06	0.00	8.86	2.65	8.86	0.07
55		26.14	0.00	25.98	7.82	25.98	0.21
56		26.22	0.00	95.38	25.50	95.38	0.78
57	geranyl propanoate	26.42	0.00	230.45	59.74	230.45	1.89
58		26.60	0.00	18.03	4.67	18.03	0.15
59		26.80	0.00	16.06	4.66	16.06	0.13
60	gamma cadinene	26.99	0.00	107.84	23.52	107.84	0.88
61		27.15	0.00	39.58	6.13	39.58	0.32
62		27.40	0.00	7.69	2.23	7.69	0.06
63		27.49	0.00	15.57	4.60	15.57	0.13
64	delta cadinene	27.65	0.00	45.93	9.67	45.93	0.38
65	cis-calamenene	28.01	0.00	157.82	34.08	157.82	1.29
66	citronellyl n-butyrate	28.22	0.00	54.26	16.52	54.26	0.44
67	trans-calamenene	28.32	0.00	15.75	3.45	15.75	0.13
68		28.51	0.00	16.17	4.42	16.17	0.13
69		28.75	0.00	32.05	8.21	32.05	0.26
70	geranyl n-butyrate	29.40	0.00	110.02	33.49	110.02	0.90
71		29.93	0.00	29.42	7.69	29.42	0.24
72		30.10	0.00	19.52	4.30	19.52	0.16
73	phenylethyl tiglate	30.24	0.00	105.18	27.20	105.18	0.86
74		30.44	0.00	12.13	1.62	12.13	0.10
75		30.91	0.00	20.04	2.78	20.04	0.16
76		31.31	0.00	17.79	4.91	17.79	0.15
77	10-epi-gamma eudesmol	31.47	0.00	564.49	134.94	564.49	4.63
78		31.66	0.00	9.65	3.07	9.65	0.08
79		31.74	0.00	13.95	3.99	13.95	0.11
80		31.86	0.00	14.34	3.69	14.34	0.12
81		32.00	0.00	29.00	6.08	29.00	0.24
82	beta eudesmol	32.28	0.00	49.76	7.96	49.76	0.41
83	alpha eudesmol	32.40	0.00	28.39	7.09	28.39	0.23
84		32.48	0.00	28.09	7.84	28.09	0.23
85		32.58	0.00	45.83	9.73	45.83	0.38
86		32.79	0.00	24.01	5.91	24.01	0.20
87		33.10	0.00	28.94	8.85	28.94	0.24
88		33.75	0.00	10.56	3.11	10.56	0.09
89	geranyl tiglate	34.32	0.00	135.29	39.32	135.29	1.11
90		34.87	0.00	21.20	5.75	21.20	0.17
91		36.07	0.00	10.80	3.13	10.80	0.09
92		38.12	0.00	6.12	1.76	6.12	0.05
93		39.21	0.00	11.91	3.45	11.91	0.10
94		42.23	0.00	4.50	1.31	4.50	0.04





40

42.230

50

min