

Geranium Rose Org.

HP-5 5% Phenyl Methyl Siloxane

3601 LAGA

30.000m

Egypt

250.000um

Pelargonium Gravolens var. roseum

0.250um

Sample/Solvent: 0.05g/0.51g

Injection Amount: 0.2uL

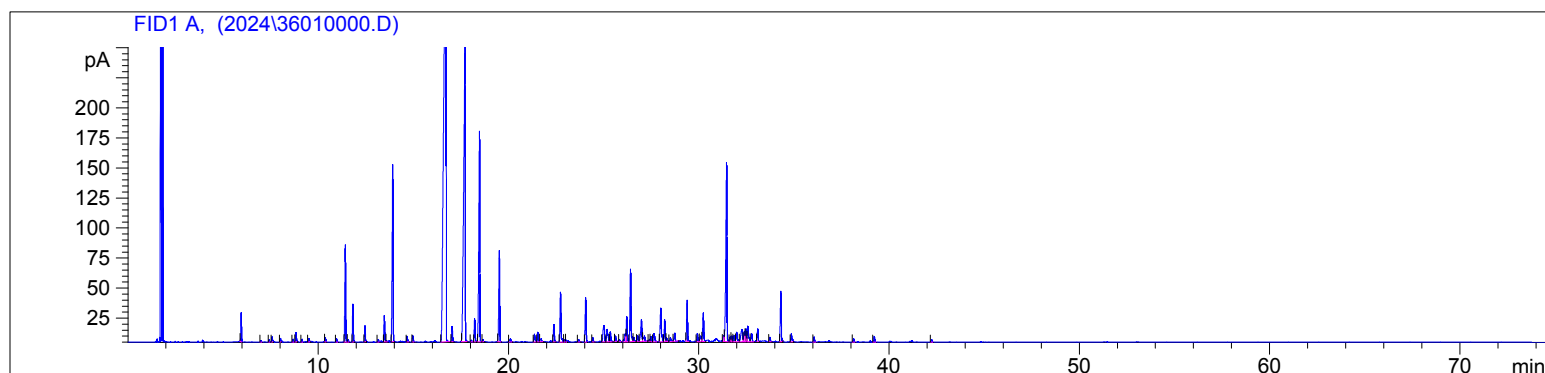
20:1 Split Ratio

12/19/2024 8:55:20 AM

12/19/2024

12/19/2024 8:55:20 AM

11:06:45 AM



#	Compound Name	Meas. Ret.	Amount	Response	Height	Area	Area %
1	Alpha Pinene	5.95	0.00	54.54	24.24	54.54	0.56
2		6.99	0.00	2.78	1.18	2.78	0.03
3		7.41	0.00	4.71	1.88	4.71	0.05
4	Myrcene	7.57	0.00	12.91	4.43	12.91	0.13
5		8.01	0.00	6.96	3.04	6.96	0.07
6	d-limonene	8.67	0.00	6.10	2.35	6.10	0.06
7	1.8 cineol	8.83	0.00	23.87	7.69	23.87	0.25
8	cis-beta ocimene	9.13	0.00	6.61	2.44	6.61	0.07
9	trans-beta ocimene	9.50	0.00	7.68	2.87	7.68	0.08
10	cis-linalool oxide	10.38	0.00	11.13	3.62	11.13	0.11
11		10.97	0.00	8.74	2.75	8.74	0.09
12	linalool	11.43	0.00	246.66	80.84	246.66	2.54
13		11.58	0.00	6.31	1.81	6.31	0.07
14	cis-rose oxide	11.83	0.00	89.92	31.42	89.92	0.93
15	trans-rose oxide	12.47	0.00	38.15	13.35	38.15	0.39
16	camphor	13.16	0.00	6.29	2.03	6.29	0.06
17	menthone	13.48	0.00	68.24	21.72	68.24	0.70
18		13.59	0.00	2.95	1.14	2.95	0.03
19	isomenthone	13.93	0.00	496.16	147.07	496.16	5.11
20	cis-pinocarveol	14.68	0.00	16.12	4.75	16.12	0.17
21	alpha terpineol	14.98	0.00	17.30	5.04	17.30	0.18
22	citronellol	16.73	0.00	3316.83	418.72	3316.83	34.19
23	neral (citral b)	17.04	0.00	39.40	12.63	39.40	0.41
24	geraniol	17.73	0.00	1393.66	250.42	1393.66	14.37
25		18.05	0.00	4.75	1.36	4.75	0.05
26	geranial	18.23	0.00	63.26	19.06	63.26	0.65
27	citronellyl formate	18.49	0.00	643.34	175.13	643.34	6.63
28	bornyl acetate	18.66	0.00	4.95	1.74	4.95	0.05
29	geranyl formate	19.53	0.00	248.65	75.86	248.65	2.56
30		20.11	0.00	13.00	2.63	13.00	0.13
31	alpha terpinyl acetate	21.37	0.00	25.78	6.41	25.78	0.27
32	eugenol	21.54	0.00	25.48	7.90	25.48	0.26
33		21.73	0.00	12.90	2.75	12.90	0.13
34	alpha copaene	22.39	0.00	49.81	14.37	49.81	0.51
35	geranyl acetate	22.74	0.00	150.48	41.27	150.48	1.55
36		22.96	0.00	6.25	1.78	6.25	0.06
37		23.04	0.00	4.85	1.52	4.85	0.05
38		23.70	0.00	5.99	1.89	5.99	0.06
39	beta caryophyllene	24.07	0.00	131.50	36.76	131.50	1.36
40		24.44	0.00	13.13	3.53	13.13	0.14

3601-LAGA

Instrument 6890

C:\HPCHEM\2\DATA\2024\
36010000.D

Geranium Rose Org.

HP-5 5% Phenyl Methyl Siloxane

3601 LAGA

30.000m

Egypt

250.000um

Pelargonium Gravolens var. roseum

0.250um

Sample/Solvent: 0.05g/0.51g

Injection Amount: 0.2uL

20:1 Split Ratio

12/19/2024 8:55:20 AM

12/19/2024

12/19/2024 8:55:20 AM

11:06:45 AM

#	Compound Name	Meas. Ret.	Amount	Response	Height	Area	Area %
41	citronellyl propanoate	25.03	0.00	73.74	13.52	73.74	0.76
42		25.19	0.00	52.50	10.23	52.50	0.54
43		25.36	0.00	29.77	8.21	29.77	0.31
44		25.63	0.00	14.89	4.48	14.89	0.15
45		25.85	0.00	4.66	1.40	4.66	0.05
46		26.14	0.00	28.75	6.77	28.75	0.30
47		26.22	0.00	77.02	21.08	77.02	0.79
48	geranyl propanoate	26.42	0.00	229.31	60.21	229.31	2.36
49	germacrene d	26.60	0.00	13.18	3.51	13.18	0.14
50		26.80	0.00	15.46	4.61	15.46	0.16
51	gamma cadinene	26.99	0.00	80.72	18.02	80.72	0.83
52		27.15	0.00	25.69	4.49	25.69	0.26
53		27.40	0.00	4.36	1.46	4.36	0.04
54		27.49	0.00	14.38	4.32	14.38	0.15
55	delta cadinene	27.65	0.00	36.27	7.04	36.27	0.37
56	cis-calamenene	28.01	0.00	125.17	27.87	125.17	1.29
57		28.22	0.00	60.33	18.18	60.33	0.62
58		28.32	0.00	11.59	3.00	11.59	0.12
59		28.51	0.00	13.86	3.33	13.86	0.14
60		28.74	0.00	25.18	6.90	25.18	0.26
61	geranyl n-butyrate	29.40	0.00	112.08	34.17	112.08	1.16
62		29.93	0.00	24.71	6.72	24.71	0.25
63		30.10	0.00	22.20	4.56	22.20	0.23
64	phenylethyl tiglate	30.24	0.00	91.83	23.69	91.83	0.95
65		31.32	0.00	17.11	4.90	17.11	0.18
66	epi gamma eudesmol	31.47	0.00	637.57	148.89	637.57	6.57
67		31.66	0.00	12.69	3.85	12.69	0.13
68		31.74	0.00	17.01	4.70	17.01	0.18
69		31.86	0.00	19.39	4.99	19.39	0.20
70		32.00	0.00	36.65	7.91	36.65	0.38
71		32.28	0.00	62.44	10.17	62.44	0.64
72		32.40	0.00	32.45	8.04	32.45	0.33
73	beta eudesmol	32.48	0.00	38.74	10.66	38.74	0.40
74	alpha eudesmol	32.58	0.00	60.21	12.93	60.21	0.62
75		32.79	0.00	28.57	6.54	28.57	0.29
76		33.10	0.00	33.13	10.12	33.13	0.34
77		33.75	0.00	12.73	3.70	12.73	0.13
78	geranyl tiglate	34.32	0.00	140.61	41.77	140.61	1.45
79		34.87	0.00	28.32	6.73	28.32	0.29
80		36.07	0.00	14.35	4.18	14.35	0.15
81		38.13	0.00	9.34	2.66	9.34	0.10
82		39.21	0.00	16.11	4.65	16.11	0.17
83		42.23	0.00	6.92	1.99	6.92	0.07

