

3611-082516

Instrument 6890

C:\HPCHEM\2\DATA\2016\
36110000.D

Ginger CO2 (Organic)

HP-5 5% Phenyl Methyl Siloxane

3611-082516

30.000m

Germany

250.000um

zingiber officinale rosc. root

0.250um

Sample: 0.24g

Hexane: 0.10g

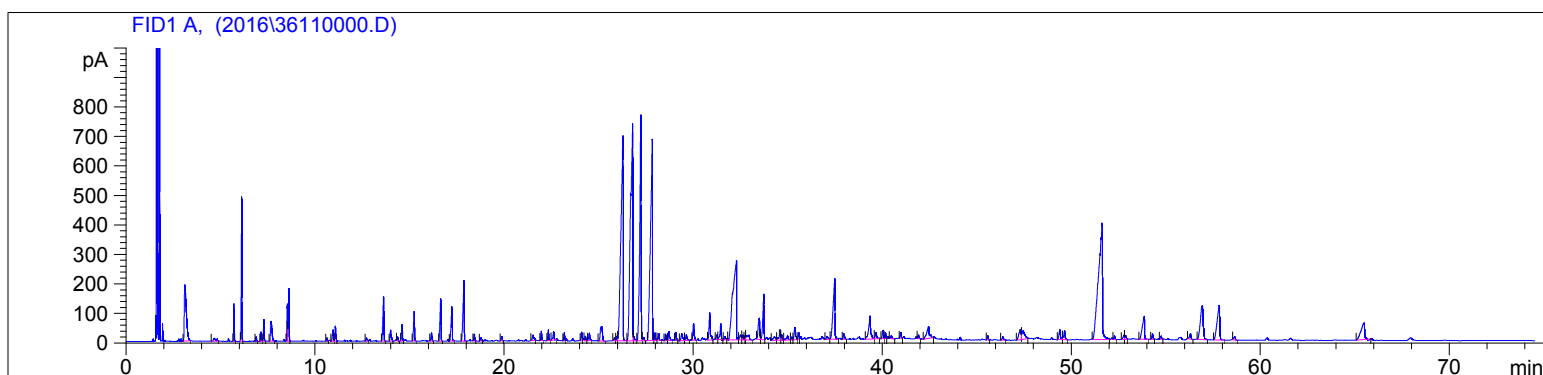
Injection: 0.2uL

8/25/2016 1:42:23 PM

1/17/2017

8/25/2016 1:42:23 PM

10:51:04 AM



#	Compound Name	Meas. Ret.	Amount	Response	Height	Area	Area %
1		0.00	0.00	0.00	0.00	0.00	0.00
2		0.00	0.00	0.00	0.00	0.00	0.00
3		3.11	0.00	1437.15	190.88	1437.15	2.75
4		4.65	0.00	84.55	10.08	84.55	0.16
5		0.00	0.00	0.00	0.00	0.00	0.00
6	alpha thujene	0.00	0.00	0.00	0.00	0.00	0.00
7	alpha pinene	5.70	14.53	285.32	126.09	285.32	0.55
8	camphene	6.12	2641.21	1191.59	488.17	1191.59	2.28
9	beta pinene	6.88	0.95	36.22	15.00	36.22	0.07
10		7.13	0.00	87.33	31.94	87.33	0.17
11	myrcene	7.29	19.37	177.46	72.18	177.46	0.34
12	alpha phellandrene	7.67	36.90	360.75	66.78	360.75	0.69
13	delta-3 carene	0.00	0.00	0.00	0.00	0.00	0.00
14	para cymene	0.00	0.00	0.00	0.00	0.00	0.00
15	beta phellandrene	0.00	0.00	0.00	0.00	0.00	0.00
16	d-limonene	8.53	4.44	383.12	125.38	383.12	0.73
17	1.8 cineol	8.60	808.51	467.28	177.78	467.28	0.89
18	terpinolene	10.62	175.18	29.23	10.55	29.23	0.06
19		10.94	0.00	151.64	38.05	151.64	0.29
20	linalool	11.07	132.66	171.97	50.84	171.97	0.33
21	camphor	12.71	45.31	43.16	10.38	43.16	0.08
22	borneol	13.62	1758.70	560.07	148.19	560.07	1.07
23	terpin-4-ol	13.99	41.84	149.86	37.23	149.86	0.29
24		14.36	0.00	45.87	13.50	45.87	0.09
25	alpha terpineol	14.60	193.53	180.97	55.54	180.97	0.35
26	decanal	15.23	0.00	363.50	100.05	363.50	0.70
27	nerol	16.15	38.14	96.41	27.35	96.41	0.18
28	neral (citral B)	16.64	17.65	555.50	144.00	555.50	1.06
29	linalyl acetate	0.00	0.00	0.00	0.00	0.00	0.00
30	geraniol	17.23	108.78	477.58	114.94	477.58	0.91
31	geranial	17.87	22.93	924.12	202.11	924.12	1.77
32		18.42	0.00	75.44	22.67	75.44	0.14
33		18.76	0.00	41.33	11.17	41.33	0.08
34		19.87	0.00	52.88	14.99	52.88	0.10
35		21.52	0.00	107.73	18.40	107.73	0.21
36	alpha copaene	21.96	0.00	109.57	31.53	109.57	0.21

3611-082516

Instrument 6890

C:\HPCHEM\2\DATA\2016\
36110000.D

Ginger CO2 (Organic)

HP-5 5% Phenyl Methyl Siloxane

3611-082516

30.000m

Germany

250.000um

zingiber officinale rosc. root

0.250um

Sample: 0.24g

Hexane: 0.10g

Injection: 0.2uL

8/25/2016 1:42:23 PM

1/17/2017

8/25/2016 1:42:23 PM

10:51:04 AM

#	Compound Name	Meas. Ret.	Amount	Response	Height	Area	Area %
37		22.33	0.00	116.20	36.06	116.20	0.22
38	geranyl acetate	22.61	21.57	127.13	28.95	127.13	0.24
39	beta elemene	23.18	0.00	91.74	27.77	91.74	0.18
40	dodecanal	24.09	0.00	103.04	29.21	103.04	0.20
41		0.00	0.00	0.00	0.00	0.00	0.00
42		24.29	0.00	56.12	15.61	56.12	0.11
43	beta caryophyllene	24.50	0.00	112.72	25.05	112.72	0.22
44		25.15	0.00	374.03	49.65	374.03	0.72
45		25.83	0.00	46.79	10.22	46.79	0.09
46		25.97	0.00	66.88	16.15	66.88	0.13
47	alpha curcumene	26.28	0.00	5674.01	696.13	5674.01	10.85
48	alpha zingiberene	26.79	0.00	6202.83	723.45	6202.83	11.86
49	beta himachalene	26.86	0.00	61.11	13.53	61.11	0.12
50	alpha farnesene <E,E> + bet	27.22	0.00	3872.42	758.42	3872.42	7.41
51	delta cadinene	27.37	0.00	51.89	11.50	51.89	0.10
52	beta sesquiphellandrene	27.83	0.00	4856.58	673.89	4856.58	9.29
53		27.98	0.00	83.08	25.23	83.08	0.16
54		28.17	0.00	87.81	23.26	87.81	0.17
55		28.54	0.00	73.19	22.05	73.19	0.14
56		28.71	0.00	134.17	30.50	134.17	0.26
57		29.09	0.00	93.70	27.19	93.70	0.18
58	elemol	29.39	0.00	141.71	23.57	141.71	0.27
59		29.63	0.00	89.16	18.36	89.16	0.17
60	trans nerolidol	30.01	0.00	245.75	56.65	245.75	0.47
61		30.87	0.00	438.11	92.50	438.11	0.84
62		31.25	0.00	63.61	16.20	63.61	0.12
63		31.46	0.00	235.11	53.42	235.11	0.45
64		31.68	0.00	50.79	10.70	50.79	0.10
65		0.00	0.00	0.00	0.00	0.00	0.00
66	beta eudesmol	32.28	0.00	3608.86	264.68	3608.86	6.90
67		32.50	0.00	106.41	17.13	106.41	0.20
68		32.63	0.00	61.36	16.62	61.36	0.12
69		32.75	0.00	52.12	14.35	52.12	0.10
70		0.00	0.00	0.00	0.00	0.00	0.00
71		0.00	0.00	0.00	0.00	0.00	0.00
72		32.94	0.00	162.21	16.38	162.21	0.31
73		33.49	0.00	434.62	71.88	434.62	0.83
74		33.73	0.00	698.31	155.15	698.31	1.34
75		34.29	0.00	102.98	12.01	102.98	0.20
76		34.59	0.00	170.42	34.51	170.42	0.33
77		34.67	0.00	69.19	18.84	69.19	0.13
78		0.00	0.00	0.00	0.00	0.00	0.00
79		34.98	0.00	99.28	14.79	99.28	0.19
80		35.22	0.00	33.04	10.07	33.04	0.06
81		35.38	0.00	210.06	41.99	210.06	0.40
82		35.58	0.00	90.72	22.67	90.72	0.17
83		37.07	0.00	73.05	11.34	73.05	0.14
84		37.48	0.00	1412.07	206.07	1412.07	2.70
85		37.97	0.00	86.59	18.67	86.59	0.17
86		39.35	0.00	589.36	77.85	589.36	1.13
87		39.67	0.00	123.77	20.91	123.77	0.24
88		40.04	0.00	115.66	27.93	115.66	0.22
89		40.17	0.00	71.07	19.35	71.07	0.14
90		40.47	0.00	58.27	10.98	58.27	0.11
91		40.98	0.00	67.67	19.31	67.67	0.13

3611-082516

Instrument 6890

C:\HPCHEM\2\DATA\2016\
36110000.D

Ginger CO2 (Organic)

HP-5 5% Phenyl Methyl Siloxane

3611-082516

30.000m

Germany

250.000um

zingiber officinale rosc. root

0.250um

Sample: 0.24g

Hexane: 0.10g

Injection: 0.2uL

8/25/2016 1:42:23 PM

1/17/2017

8/25/2016 1:42:23 PM

10:51:04 AM

#	Compound Name	Meas. Ret.	Amount	Response	Height	Area	Area %
92		41.91	0.00	49.26	12.83	49.26	0.09
93		42.45	0.00	406.82	40.58	406.82	0.78
94		45.58	0.00	56.53	14.69	56.53	0.11
95		46.37	0.00	58.42	11.17	58.42	0.11
96		47.29	0.00	266.68	33.17	266.68	0.51
97		47.45	0.00	288.25	28.97	288.25	0.55
98		49.38	0.00	193.13	33.55	193.13	0.37
99		49.64	0.00	161.43	30.43	161.43	0.31
100		51.62	0.00	5937.08	392.77	5937.08	11.36
101		52.28	0.00	51.29	13.60	51.29	0.10
102		52.78	0.00	75.06	14.69	75.06	0.14
103		52.86	0.00	61.76	13.80	61.76	0.12
104		53.86	0.00	634.21	78.86	634.21	1.21
105		54.29	0.00	79.17	18.31	79.17	0.15
106		54.74	0.00	46.77	10.95	46.77	0.09
107		56.29	0.00	94.41	18.16	94.41	0.18
108		56.92	0.00	1208.52	113.66	1208.52	2.31
109		57.82	0.00	1116.23	117.13	1116.23	2.13
110		58.64	0.00	64.84	10.82	64.84	0.12
111		65.48	0.00	739.57	55.76	739.57	1.41





