

3611

Instrument 6890

C:\HPCHEM\2\DATA\2023\  
36110001.D

Ginger CO2 ORG

HP-5 5% Phenyl Methyl Siloxane

3611-AACN

30.000m

Nigeria

250.000um

Zingiber officinalis rosc. root

0.250um

Injection Amount: 0.2uL

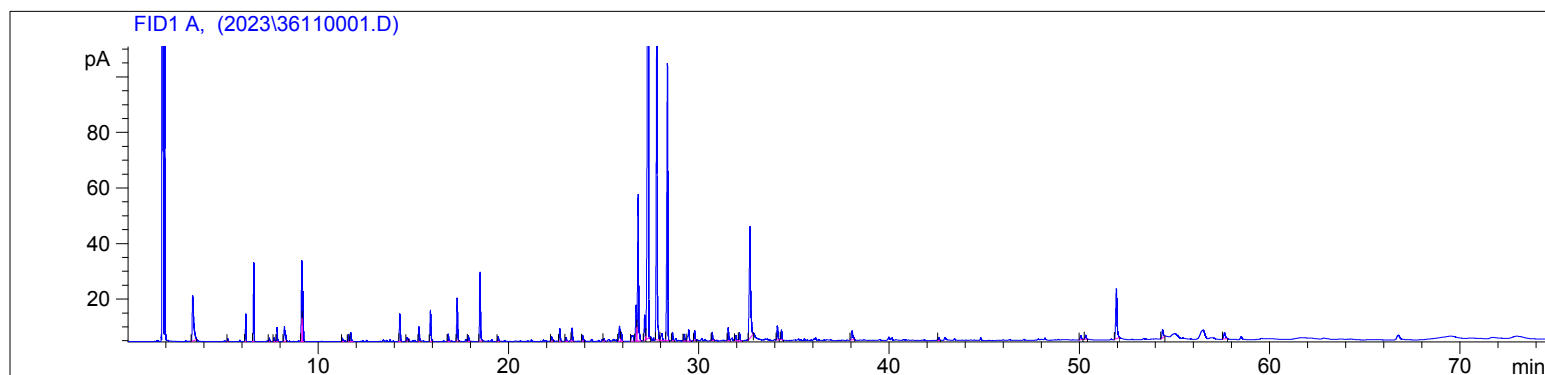
15:1 Split Ratio

1/25/2023 1:56:07 PM

1/25/2023

1/25/2023 1:56:07 PM

3:27:02 PM



#	Compound Name	Meas. Ret.	Amount	Response	Height	Area	Area %
1	hexanal	3.40	0.00	87.55	16.31	87.55	2.71
2		5.24	0.00	2.17	0.95	2.17	0.07
3	alpha pinene	6.18	0.00	22.46	9.91	22.46	0.70
4	camphene	6.60	0.00	67.43	28.42	67.43	2.09
5	beta pinene	7.42	0.00	3.30	1.29	3.30	0.10
6		7.68	0.00	3.64	1.32	3.64	0.11
7	myrcene	7.83	0.00	12.33	5.05	12.33	0.38
8	alpha phellandrene	8.21	0.00	24.74	5.33	24.74	0.77
9	d-limonene	9.12	0.00	83.39	28.99	83.39	2.58
10	1.8 cineole	9.19	0.00	48.67	18.01	48.67	1.51
11	terpinolene	11.28	0.00	3.36	1.20	3.36	0.10
12		11.60	0.00	7.57	2.39	7.57	0.23
13	linalool	11.72	0.00	11.57	3.35	11.57	0.36
14	borneol	14.30	0.00	34.08	9.98	34.08	1.06
15	terpin-4-ol	14.67	0.00	4.68	1.30	4.68	0.14
16	alpha terpineol	15.30	0.00	17.26	5.28	17.26	0.53
17	decanal	15.91	0.00	38.42	11.19	38.42	1.19
18	nerol	16.84	0.00	9.09	2.68	9.09	0.28
19	neral (citral B)	17.31	0.00	52.54	15.51	52.54	1.63
20	geraniol	17.89	0.00	7.53	2.09	7.53	0.23
21	geranial	18.51	0.00	83.86	24.66	83.86	2.60
22		19.46	0.00	5.97	1.78	5.97	0.18
23	alpha copaene	22.28	0.00	5.62	1.47	5.62	0.17
24		22.71	0.00	14.94	4.40	14.94	0.46
25	geranyl acetate	23.03	0.00	5.17	1.42	5.17	0.16
26		23.35	0.00	15.78	4.58	15.78	0.49
27		23.90	0.00	6.55	2.09	6.55	0.20
28		25.02	0.00	2.90	0.95	2.90	0.09
29		25.84	0.00	22.76	5.38	22.76	0.70
30		25.94	0.00	11.78	3.29	11.78	0.36
31		26.49	0.00	15.71	2.05	15.71	0.49
32		26.72	0.00	45.07	12.84	45.07	1.40
33	alpha curcumene	26.82	0.00	193.68	52.55	193.68	6.00
34		27.17	0.00	31.96	8.99	31.96	0.99
35	alpha zingiberene	27.35	0.00	967.14	233.83	967.14	29.95
36	alpha Farnesene	27.80	0.00	403.46	110.87	403.46	12.49
37		28.07	0.00	12.28	2.39	12.28	0.38

3611

Instrument 6890

C:\HPCHEM\2\DATA\2023\  
36110001.D

Ginger CO2 ORG

HP-5 5% Phenyl Methyl Siloxane

3611-AACN

30.000m

Nigeria

250.000um

Zingiber officinalis rosc. root

0.250um

Injection Amount: 0.2uL

15:1 Split Ratio

1/25/2023 1:56:07 PM

1/25/2023

1/25/2023 1:56:07 PM

3:27:02 PM

#	Compound Name	Meas. Ret.	Amount	Response	Height	Area	Area %
38	beta sesquiphellandrene	28.36	0.00	360.88	99.72	360.88	11.18
39		28.63	0.00	9.34	2.95	9.34	0.29
40		29.24	0.00	8.27	2.37	8.27	0.26
41		29.48	0.00	19.86	4.04	19.86	0.61
42		29.79	0.00	11.43	3.59	11.43	0.35
43		30.71	0.00	10.87	2.95	10.87	0.34
44		31.55	0.00	17.06	4.69	17.06	0.53
45		31.95	0.00	8.88	1.84	8.88	0.27
46		32.15	0.00	10.48	2.86	10.48	0.32
47	Zingerone	32.70	0.00	202.99	39.96	202.99	6.29
48		34.14	0.00	18.94	5.03	18.94	0.59
49		34.35	0.00	12.77	3.53	12.77	0.40
50		38.05	0.00	17.20	3.26	17.20	0.53
51		42.61	0.00	3.69	1.06	3.69	0.11
52		50.07	0.00	6.75	1.45	6.75	0.21
53	stearic acid	50.32	0.00	5.44	1.35	5.44	0.17
54	[6]-shogaol	51.94	0.00	87.45	17.91	87.45	2.71
55		54.37	0.00	15.59	3.05	15.59	0.48
56	[8]-shogaol	57.62	0.00	14.75	2.32	14.75	0.46

