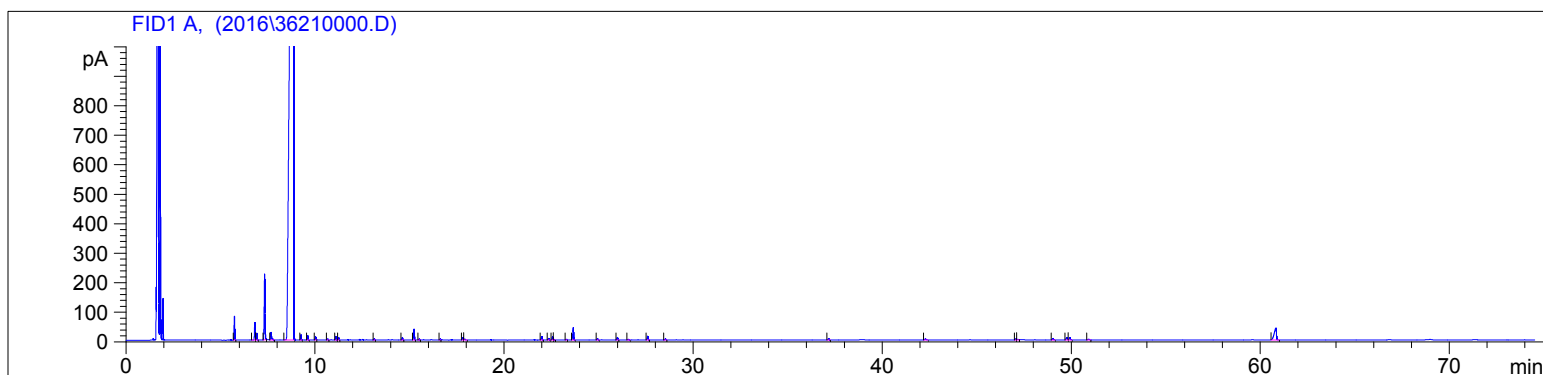


Grapefruit, White (Organic)  
3621-LLABT  
USA  
citrus paradisi  
Sample/Hexane: 0.11g/0.22g  
Injection: 0.2uL

HP-5 5% Phenyl Methyl Siloxane  
30.000m  
250.000um  
0.250um

12/16/2016 2:55:47 PM  
12/16/2016 2:55:47 PM

12/16/2016  
4:25:50 PM



#	Compound Name	Meas. Ret.	Amount	Response	Height	Area	Area %
1	alpha thujene	0.00	0.00	0.00	0.00	0.00	0.00
2	alpha pinene	5.73	9.63	189.06	80.95	189.06	0.53
3	sabinene	6.81	3.14	160.98	60.08	160.98	0.45
4	beta pinene	6.91	1.65	63.42	23.22	63.42	0.18
5	myrcene	7.33	74.71	684.51	223.11	684.51	1.93
6	octanol	7.66	9.77	95.53	25.90	95.53	0.27
7	limonene	8.87	382.20	33011.24	2866.27	33011.24	92.99
8	trans, beta ocimene	9.25	42.58	42.60	17.40	42.60	0.12
9	gamma terpinene	9.61	0.00	39.81	15.59	39.81	0.11
10		10.02	0.00	31.08	11.89	31.08	0.09
11	terpinolene	10.66	0.00	10.80	3.51	10.80	0.03
12	linalool	11.10	26.79	34.73	12.48	34.73	0.10
13		11.24	0.00	22.03	8.19	22.03	0.06
14	citronellal	13.13	28.05	13.59	4.63	13.59	0.04
15		14.61	0.00	28.28	8.88	28.28	0.08
16	alpha terpineol	15.23	118.36	110.68	36.90	110.68	0.31
17		15.50	0.00	11.62	3.89	11.62	0.03
18		16.62	0.00	12.94	4.06	12.94	0.04
19		17.82	0.00	25.03	7.62	25.03	0.07
20		17.92	0.00	16.90	3.61	16.90	0.05
21		21.99	0.00	44.22	12.80	44.22	0.12
22		22.35	0.00	17.95	5.46	17.95	0.05
23		22.55	0.00	39.55	11.48	39.55	0.11
24		22.64	0.00	10.28	3.23	10.28	0.03
25		23.30	0.00	10.29	3.06	10.29	0.03
26	beta caryophyllene	23.65	1.00	147.18	41.84	147.18	0.41
27		24.93	0.00	19.69	5.66	19.69	0.06
28		25.98	0.00	33.71	9.58	33.71	0.09
29		26.57	0.00	11.65	3.09	11.65	0.03
30		27.59	0.00	46.72	13.48	46.72	0.13
31		28.52	0.00	16.07	4.52	16.07	0.05
32		37.16	0.00	18.40	4.69	18.40	0.05
33	nootketone	42.27	52.37	19.08	3.53	19.08	0.05
34		47.07	0.00	16.21	4.20	16.21	0.05
35		47.16	0.00	12.32	2.47	12.32	0.03
36		49.02	0.00	21.78	5.16	21.78	0.06
37		49.75	0.00	30.90	7.04	30.90	0.09

3621-LLABT

Instrument 6890

C:\HPCHEM\2\DATA\2016\  
36210000.D

Grapefruit, White (Organic)  
3621-LLABT  
USA  
citrus paradisi  
Sample/Hexane: 0.11g/0.22g  
Injection: 0.2uL

HP-5 5% Phenyl Methyl Siloxane  
30.000m  
250.000um  
0.250um

12/16/2016 2:55:47 PM  
12/16/2016 2:55:47 PM

12/16/2016  
4:25:50 PM

#	Compound Name	Meas. Ret.	Amount	Response	Height	Area	Area %
38		49.92	0.00	30.79	7.24	30.79	0.09
39		50.91	0.00	14.89	2.97	14.89	0.04
40		60.82	0.00	331.89	40.47	331.89	0.93

