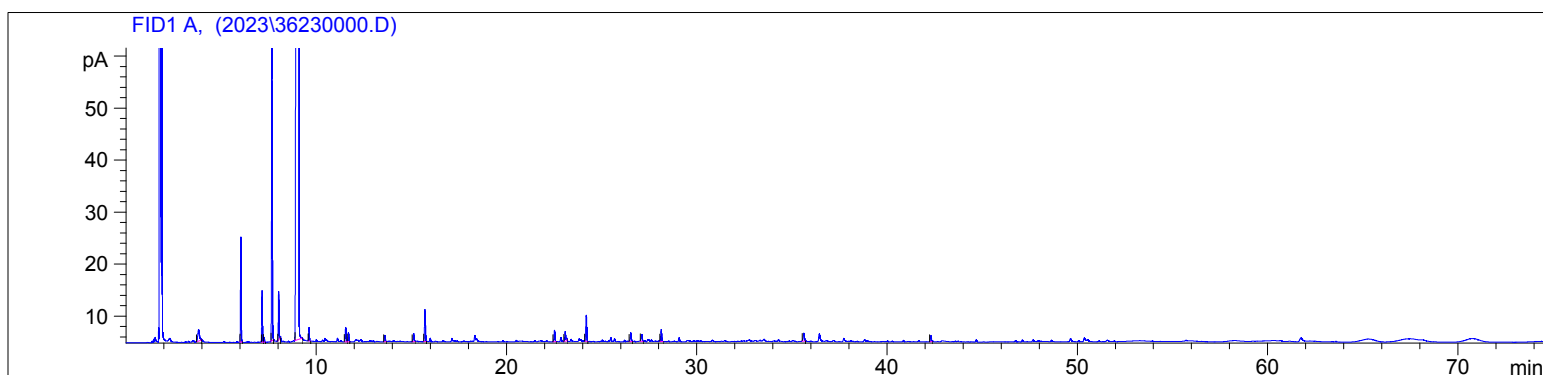
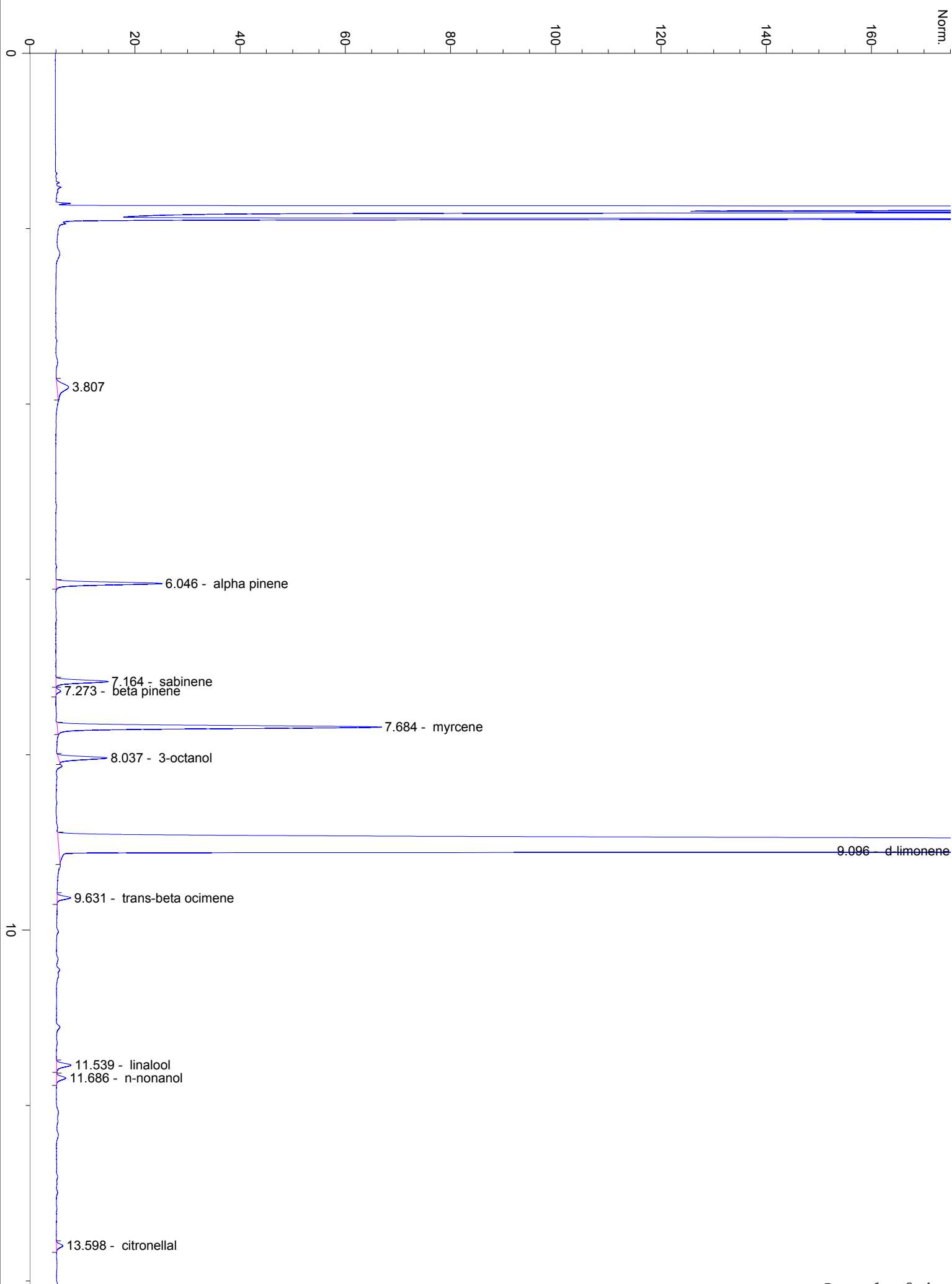


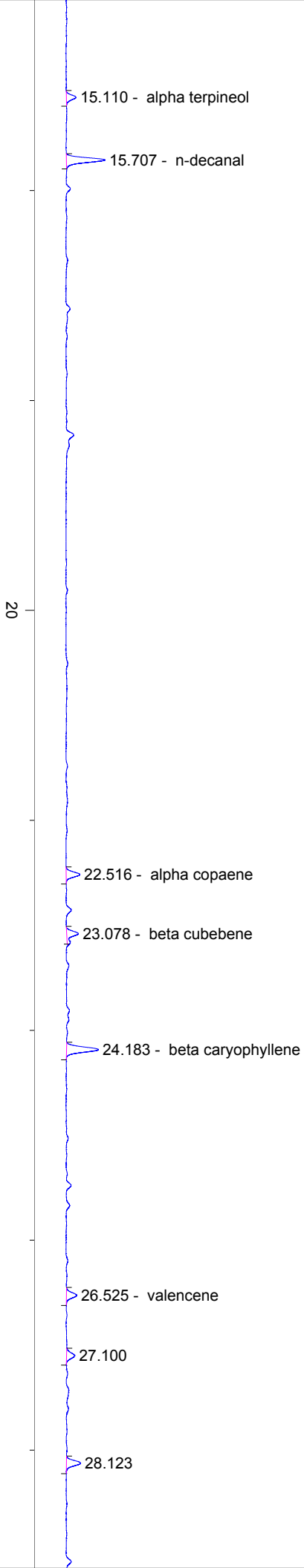
3623

Instrument 6890

C:\HPCHEM\2\DATA\2023\
36230000.DGrapefruit Pink Conventional
3623-CZFN
Israel
Citrus paradisi
Sample/Solvent: 0.08g/0.51g
Injection Amount: 0.2uL
15:1 Split RatioHP-5 5% Phenyl Methyl Siloxane
30.000m
250.000um
0.250um3/9/2023 9:35:58 AM
3/9/2023 9:35:58 AM3/9/2023
11:17:01 AM

#	Compound Name	Meas. Ret.	Amount	Response	Height	Area	Area %
1		3.81	0.00	13.68	2.20	13.68	0.18
2	alpha pinene	6.05	0.00	45.60	20.14	45.60	0.59
3	sabinene	7.16	0.00	24.49	9.90	24.49	0.32
4	beta pinene	7.27	0.00	2.36	0.91	2.36	0.03
5	myrcene	7.68	0.00	154.69	61.59	154.69	2.00
6	3-octanol	8.04	0.00	23.51	9.24	23.51	0.30
7	d-limonene	9.10	0.00	7375.34	1258.17	7375.34	95.17
8	trans-beta ocimene	9.63	0.00	6.67	2.55	6.67	0.09
9	linalool	11.54	0.00	8.52	2.76	8.52	0.11
10	n-nonanol	11.69	0.00	5.46	1.77	5.46	0.07
11	citronellal	13.60	0.00	3.70	1.20	3.70	0.05
12	alpha terpineol	15.11	0.00	5.04	1.54	5.04	0.06
13	n-decanal	15.71	0.00	19.42	6.13	19.42	0.25
14	alpha copaene	22.52	0.00	7.38	2.17	7.38	0.10
15	beta cubebene	23.08	0.00	7.36	1.86	7.36	0.09
16	beta caryophyllene	24.18	0.00	17.52	5.04	17.52	0.23
17	valencene	26.53	0.00	5.91	1.64	5.91	0.08
18		27.10	0.00	4.91	1.29	4.91	0.06
19		28.12	0.00	7.88	2.23	7.88	0.10
20		35.62	0.00	6.83	1.55	6.83	0.09
21		42.30	0.00	3.60	1.09	3.60	0.05





30

40

35.617

42.299

