

3631

Instrument 6890

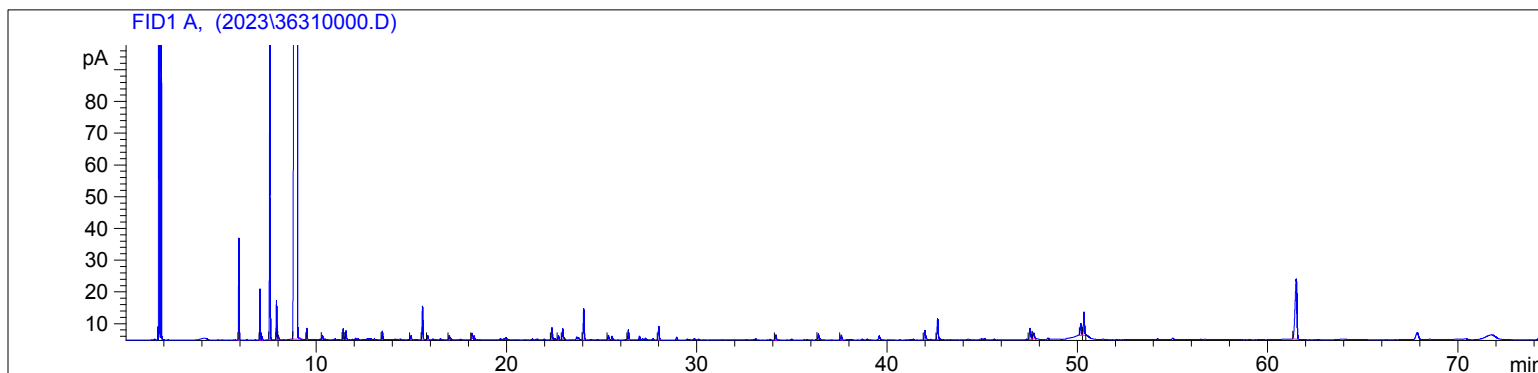
C:\HPCHEM\2\DATA\2023\36310000.D

Pink Grapefruit ORG
3631-LAEN
USA
Citrus paradisi
Sample/Solvent: 0.04g/0.51g
Injection Amount: 0.2uL
15:1 Split Ratio

HP-5 5% Phenyl Methyl Siloxane
30.000m
250.000um
0.250um

12/20/2023 2:02:38 PM
12/20/2023 2:02:38 PM

1/5/2024
2:25:28 PM



#	Compound Name	Meas. Ret.	Amount	Response	Height	Area	Area %
1	alpha pinene	5.94	0.00	70.27	32.15	70.27	0.59
2	sabinene	7.05	0.00	38.43	16.11	38.43	0.32
3	beta pinene	7.16	0.00	2.86	1.14	2.86	0.02
4	myrcene	7.57	0.00	238.48	97.72	238.48	2.00
5	3-octanol	7.92	0.00	31.52	12.30	31.52	0.26
6	2-octanol	8.01	0.00	3.99	1.40	3.99	0.03
7	d-limonene	9.02	0.00	11108.90	1583.20	11108.90	93.07
8	trans beta ocimene	9.51	0.00	9.03	3.52	9.03	0.08
9		10.32	0.00	3.43	1.26	3.43	0.03
10	linalool	11.41	0.00	9.30	3.31	9.30	0.08
11		11.56	0.00	7.51	2.76	7.51	0.06
12		13.47	0.00	7.81	2.61	7.81	0.07
13		14.97	0.00	3.97	1.25	3.97	0.03
14	n-decanal	15.58	0.00	32.50	10.54	32.50	0.27
15	octanol acetate	15.85	0.00	3.78	1.27	3.78	0.03
16		16.98	0.00	4.51	1.24	4.51	0.04
17		18.19	0.00	3.89	1.66	3.89	0.03
18		22.38	0.00	12.59	3.74	12.59	0.11
19		22.72	0.00	3.94	1.20	3.94	0.03
20		22.95	0.00	11.79	3.34	11.79	0.10
21	beta caryophyllene	24.05	0.00	34.43	9.87	34.43	0.29
22		25.34	0.00	5.02	1.42	5.02	0.04
23	valencene	26.39	0.00	11.05	3.15	11.05	0.09
24		28.00	0.00	14.92	4.22	14.92	0.12
25		34.15	0.00	5.36	1.52	5.36	0.04
26		36.38	0.00	7.04	1.72	7.04	0.06
27	nootkatone	37.59	0.00	6.02	1.59	6.02	0.05
28		41.98	0.00	13.11	2.92	13.11	0.11
29		42.65	0.00	25.87	6.54	25.87	0.22
30		47.51	0.00	17.08	3.50	17.08	0.14
31		47.70	0.00	9.36	1.88	9.36	0.08
32		50.17	0.00	15.13	3.66	15.13	0.13
33		50.34	0.00	28.68	7.27	28.68	0.24
34		61.50	0.00	134.83	18.89	134.83	1.13



20

22.382

22.723

22.947

24.050 - beta caryophyllene

25.344

26.393 - valencene

27.997

30

34.147

36.380

37.586

