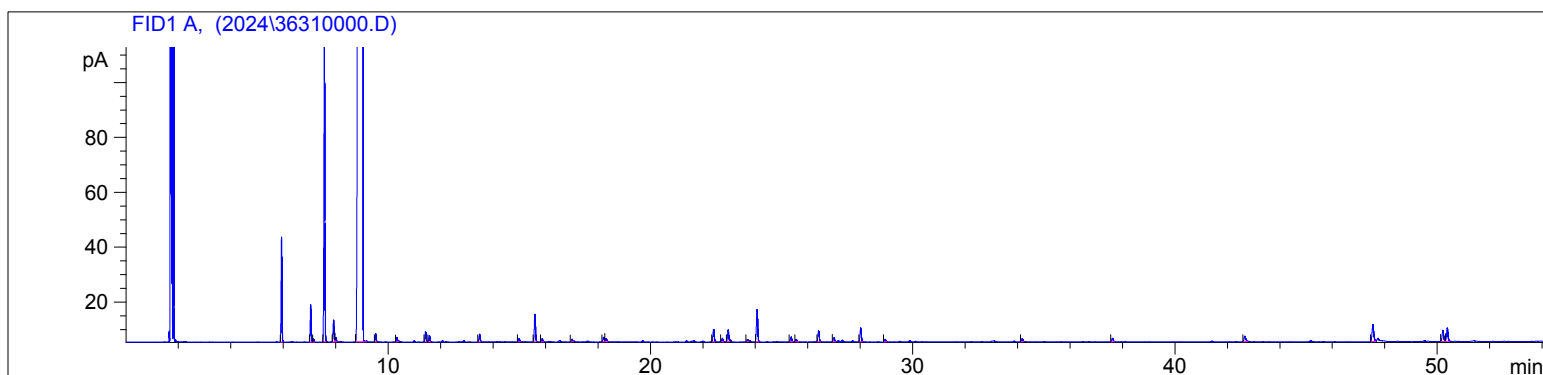


3631-AADB

Instrument 6890

C:\HPCHEM\2\DATA\2024\
36310000.DPink Grapefruit Org
3631-AADB
USA
Citrus Paradisi
Sample Ratio: 0.05g/0.50g
Injection Amount: 0.2uL
15:1 Split RatioHP-5 5% Phenyl Methyl Siloxane
30.000m
250.000um
0.250um3/5/2025 12:46:42 PM
3/5/2025 12:46:42 PM3/5/2025
1:50:57 PM

#	Compound Name	Meas. Ret.	Amount	Response	Height	Area	Area %
1	Alpha Pinene	5.94	0.00	85.10	38.15	85.10	0.66
2	Sabinene	7.05	0.00	32.82	13.65	32.82	0.25
3	Beta Pinene	7.16	0.00	2.72	1.09	2.72	0.02
4	Myrcene	7.57	0.00	281.09	112.86	281.09	2.17
5	3-Octanol	7.92	0.00	21.47	8.00	21.47	0.17
6		8.01	0.00	4.70	1.61	4.70	0.04
7	Limonene	9.03	0.00	12222.48	1677.43	12222.48	94.36
8	Trans-Beta Ocimene	9.52	0.00	7.53	2.98	7.53	0.06
9		10.33	0.00	4.87	1.59	4.87	0.04
10	Linalool	11.42	0.00	10.75	3.70	10.75	0.08
11	n-Nonanal	11.57	0.00	6.48	2.28	6.48	0.05
12	Citronellal	13.48	0.00	8.50	2.79	8.50	0.07
13		14.99	0.00	3.87	1.23	3.87	0.03
14	n-Decanal	15.59	0.00	31.28	10.07	31.28	0.24
15		15.87	0.00	3.65	1.21	3.65	0.03
16		17.00	0.00	2.66	0.85	2.66	0.02
17		18.21	0.00	5.93	1.71	5.93	0.05
18		18.30	0.00	5.26	1.22	5.26	0.04
19		22.40	0.00	16.03	4.62	16.03	0.12
20		22.75	0.00	4.49	1.32	4.49	0.03
21		22.97	0.00	15.66	4.27	15.66	0.12
22		23.70	0.00	2.70	0.77	2.70	0.02
23	Beta Caryophyllene	24.07	0.00	41.54	11.75	41.54	0.32
24		25.37	0.00	6.30	1.80	6.30	0.05
25		25.57	0.00	3.00	0.88	3.00	0.02
26	Valencene	26.42	0.00	14.02	3.94	14.02	0.11
27		27.00	0.00	5.46	1.46	5.46	0.04
28		28.02	0.00	17.63	5.00	17.63	0.14
29		28.96	0.00	3.28	0.92	3.28	0.03
30		34.18	0.00	3.94	1.10	3.94	0.03
31		37.62	0.00	5.02	1.33	5.02	0.04
32		42.67	0.00	8.77	1.96	8.77	0.07
33		47.55	0.00	28.23	6.20	28.23	0.22
34		50.22	0.00	16.37	4.05	16.37	0.13
35		50.39	0.00	19.25	4.82	19.25	0.15

