

3681

Instrument 6890

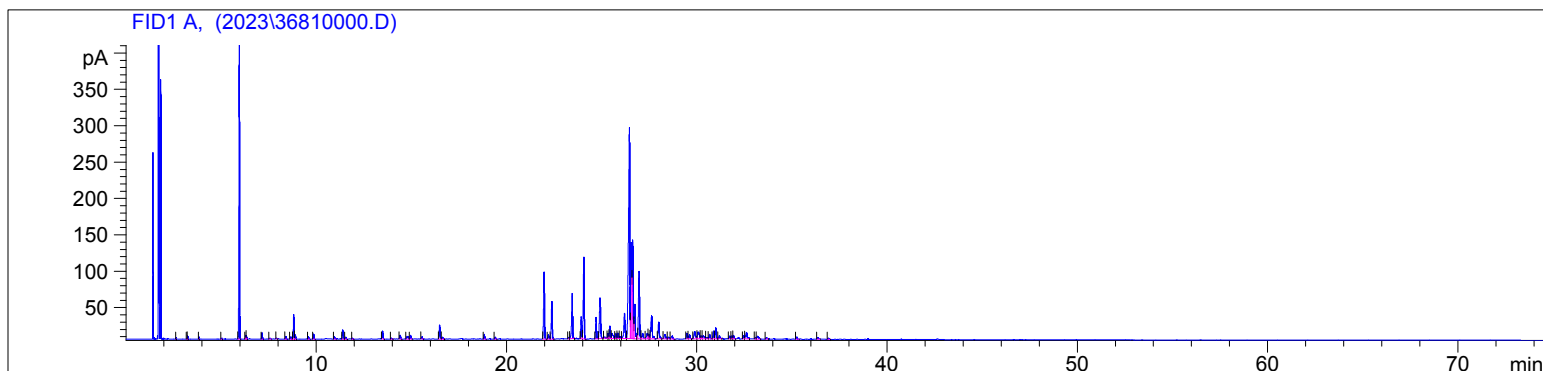
C:\HPCHEM\2\DATA\2023\
36810000.D

Helichrysum Serotinum
3681-AZDA
Corsica
Helichrysum italicum var
serotinum
Sample/Solvent: 0.05g/0.50g
Injection Amount: 0.2uL
15:1 Split Ratio

HP-5 5% Phenyl Methyl Siloxane
30.000m
250.000um
0.250um

1/15/2024 9:43:19 AM
1/15/2024 9:43:19 AM

1/15/2024
2:20:35 PM



#	Compound Name	Meas. Ret.	Amount	Response	Height	Area	Area %
1		2.63	0.00	1.79	1.55	1.79	0.02
2		3.20	0.00	1.34	1.06	1.34	0.02
3		3.23	0.00	5.55	4.16	5.55	0.08
4		3.83	0.00	4.34	2.88	4.34	0.06
5		5.03	0.00	2.66	1.32	2.66	0.04
6	alpha pinene	5.95	0.00	948.01	410.70	948.01	13.15
7	alpha fenchene	6.29	0.00	11.83	5.22	11.83	0.16
8	camphene	6.34	0.00	6.08	2.81	6.08	0.08
9	beta pinene	7.15	0.00	20.49	8.43	20.49	0.28
10	myrcene	7.56	0.00	4.01	1.33	4.01	0.06
11		7.92	0.00	1.74	0.98	1.74	0.02
12	alpha terpinolene	8.40	0.00	8.23	3.28	8.23	0.11
13	para cymene	8.66	0.00	7.58	2.96	7.58	0.11
14	d-limonene	8.81	0.00	88.24	33.66	88.24	1.22
15	1.8 cineol	8.89	0.00	15.07	5.73	15.07	0.21
16	trans-beta ocimene	9.60	0.00	8.31	3.20	8.31	0.12
17	gamma terpinene	9.87	0.00	18.88	7.01	18.88	0.26
18	terpinolene	10.96	0.00	8.05	2.73	8.05	0.11
19	linalool	11.40	0.00	35.89	12.39	35.89	0.50
20		11.55	0.00	8.34	2.72	8.34	0.12
21		11.92	0.00	3.06	1.06	3.06	0.04
22		13.49	0.00	34.07	10.90	34.07	0.47
23	borneol	13.96	0.00	4.05	1.17	4.05	0.06
24	terpin-4-ol	14.42	0.00	16.45	5.21	16.45	0.23
25	alpha terpineol	14.82	0.00	19.46	3.68	19.46	0.27
26		14.96	0.00	15.48	5.00	15.48	0.21
27		15.57	0.00	8.12	2.81	8.12	0.11
28	nerol	16.49	0.00	62.30	19.04	62.30	0.86
29		16.65	0.00	8.15	2.31	8.15	0.11
30	dihydro linalyl acetate	18.84	0.00	20.50	6.50	20.50	0.28
31		19.42	0.00	8.04	2.55	8.04	0.11
32	neryl acetate	21.99	0.00	313.25	91.99	313.25	4.35
33		22.21	0.00	21.70	5.35	21.70	0.30
34	geranyl acetate	22.39	0.00	177.47	51.18	177.47	2.46
35	isoitalicene	23.28	0.00	6.10	1.93	6.10	0.08
36	italicene	23.46	0.00	224.16	61.71	224.16	3.11
37	cis-alpha bergamotene	23.93	0.00	100.47	30.21	100.47	1.39
38	beta caryophyllene	24.08	0.00	410.72	112.32	410.72	5.70
39	italidione A	24.72	0.00	98.58	29.46	98.58	1.37
40	neryl propionate	24.93	0.00	250.33	55.71	250.33	3.47

3681

Instrument 6890

C:\HPCHEM\2\DATA\2023\
36810000.D

Helichrysum Serotinum

HP-5 5% Phenyl Methyl Siloxane

3681-AZDA

30.000m

Corsica

250.000um

Helichrysum italicum var

0.250um

serotinum

Sample/Solvent: 0.05g/0.50g

Injection Amount: 0.2uL

15:1 Split Ratio

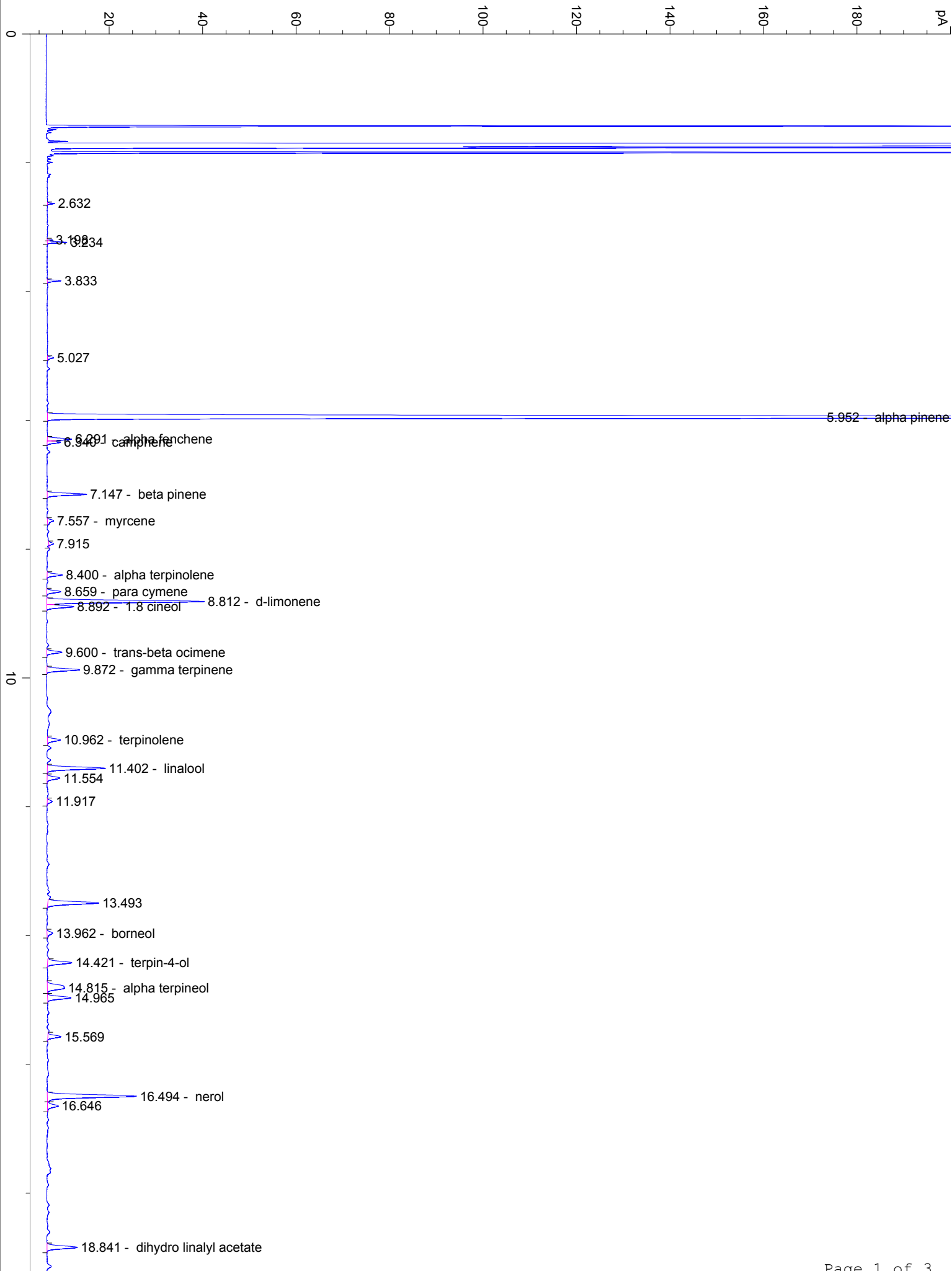
1/15/2024 9:43:19 AM

1/15/2024

1/15/2024 9:43:19 AM

2:20:35 PM

#	Compound Name	Meas. Ret.	Amount	Response	Height	Area	Area %
41	trans-beta farnesene	25.17	0.00	7.64	1.66	7.64	0.11
42		25.35	0.00	22.78	6.73	22.78	0.32
43	trans-alpha bergamotene	25.44	0.00	56.96	16.73	56.96	0.79
44		25.56	0.00	38.81	6.92	38.81	0.54
45	alpha acoradine	25.76	0.00	21.93	6.39	21.93	0.30
46	beta acoradine	25.86	0.00	25.77	7.44	25.77	0.36
47		25.96	0.00	8.77	2.54	8.77	0.12
48	italidione B	26.21	0.00	157.03	34.61	157.03	2.18
49	gamma muurolene	26.47	0.00	1354.51	288.88	1354.51	18.79
50	gamma curcumene	26.57	0.00	463.55	132.08	463.55	6.43
51	italidione C	26.64	0.00	528.40	135.65	528.40	7.33
52		26.76	0.00	188.08	47.11	188.08	2.61
53	alpha curcumene	26.98	0.00	367.34	92.60	367.34	5.10
54		27.16	0.00	38.09	7.52	38.09	0.53
55		27.40	0.00	34.86	7.41	34.86	0.48
56		27.48	0.00	25.15	6.70	25.15	0.35
57	beta curcumene	27.63	0.00	166.45	31.63	166.45	2.31
58		28.01	0.00	96.46	22.81	96.46	1.34
59		28.32	0.00	30.09	5.57	30.09	0.42
60		28.52	0.00	11.86	2.36	11.86	0.16
61		28.72	0.00	21.52	4.07	21.52	0.30
62	italidione D	29.49	0.00	24.81	7.30	24.81	0.34
63		29.62	0.00	24.47	5.75	24.47	0.34
64		29.90	0.00	55.20	9.99	55.20	0.77
65		30.08	0.00	61.82	9.32	61.82	0.86
66		30.23	0.00	16.54	3.97	16.54	0.23
67		30.34	0.00	31.22	4.16	31.22	0.43
68		30.53	0.00	9.54	2.13	9.54	0.13
69		30.68	0.00	23.95	6.30	23.95	0.33
70		30.89	0.00	38.90	10.47	38.90	0.54
71	guaiol	31.01	0.00	55.11	15.07	55.11	0.76
72		31.20	0.00	13.84	4.25	13.84	0.19
73		31.74	0.00	13.48	3.78	13.48	0.19
74		31.85	0.00	13.92	3.88	13.92	0.19
75		31.94	0.00	19.05	4.79	19.05	0.26
76	gamma eudesmol	32.46	0.00	14.97	4.29	14.97	0.21
77	alpha eudesmol	32.62	0.00	50.60	8.90	50.60	0.70
78		33.08	0.00	5.33	1.58	5.33	0.07
79		33.20	0.00	24.82	3.98	24.82	0.34
80		33.67	0.00	7.14	1.96	7.14	0.10
81		35.26	0.00	11.48	3.20	11.48	0.16
82		36.37	0.00	11.37	2.47	11.37	0.16
83		36.92	0.00	5.67	1.39	5.67	0.08





40

50

min