

3681

Instrument 6890

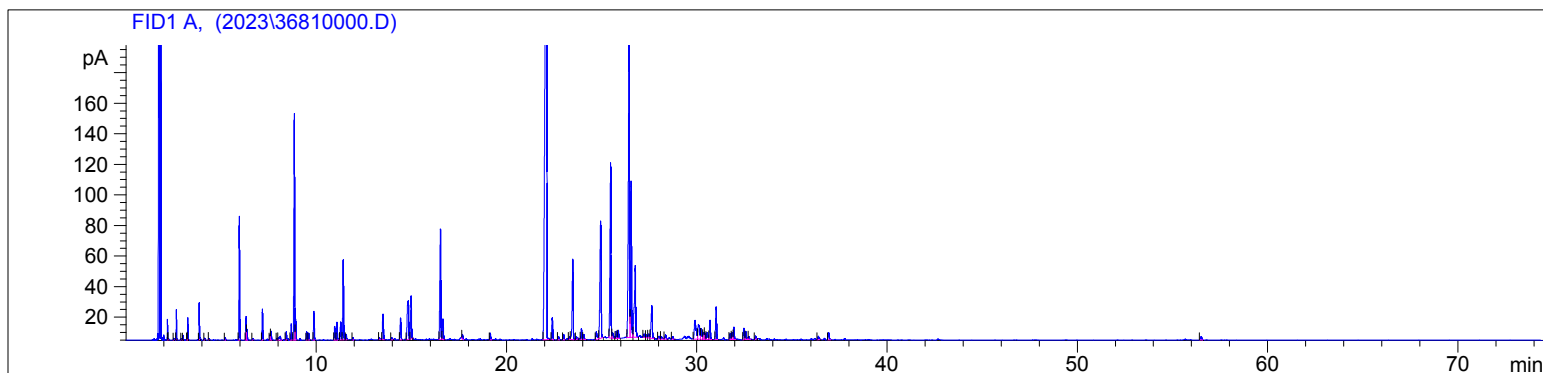
C:\HPCHEM\2\DATA\2023\  
36810000.D

Helichrysum Serotinum ORG  
3681-IBFN  
France  
Helichrysum italicum var.  
serotinum  
Sample/Solvent: 0.08g/0.52g  
Injection Amount: 0.2uL  
15:1 Split Ratio

HP-5 5% Phenyl Methyl Siloxane  
30.000m  
250.000um  
0.250um

9/28/2023 1:22:24 PM  
9/28/2023 1:22:24 PM

10/11/2023  
11:56:16 AM



#	Compound Name	Meas. Ret.	Amount	Response	Height	Area	Area %
1		2.19	0.00	13.48	13.63	13.48	0.18
2		2.23	0.00	1.02	0.96	1.02	0.01
3		2.51	0.00	1.46	1.27	1.46	0.02
4		2.64	0.00	22.36	19.69	22.36	0.29
5		2.90	0.00	1.27	1.07	1.27	0.02
6		2.98	0.00	3.89	3.16	3.89	0.05
7		3.21	0.00	0.89	0.80	0.89	0.01
8		3.25	0.00	19.30	14.62	19.30	0.25
9		3.84	0.00	38.04	24.23	38.04	0.50
10		4.13	0.00	2.14	1.12	2.14	0.03
11		4.36	0.00	1.83	0.92	1.83	0.02
12		5.21	0.00	3.38	1.66	3.38	0.04
13	alpha pinene	5.95	0.00	179.71	80.97	179.71	2.37
14	alpha fenchene	6.31	0.00	36.50	15.59	36.50	0.48
15	camphene	6.35	0.00	15.61	7.08	15.61	0.21
16		6.66	0.00	2.49	0.99	2.49	0.03
17	beta pinene	7.16	0.00	50.26	20.24	50.26	0.66
18		7.57	0.00	8.13	3.59	8.13	0.11
19	myrcene	7.62	0.00	15.79	5.91	15.79	0.21
20		7.94	0.00	2.75	1.15	2.75	0.04
21		8.10	0.00	12.31	2.38	12.31	0.16
22	alpha terpinene	8.42	0.00	13.27	5.27	13.27	0.17
23	para cymene	8.68	0.00	28.22	10.58	28.22	0.37
24	d-limonene	8.84	0.00	398.56	147.92	398.56	5.26
25	1.8 cineol	8.91	0.00	34.00	13.74	34.00	0.45
26		9.51	0.00	14.11	5.42	14.11	0.19
27		9.62	0.00	11.45	4.48	11.45	0.15
28	gamma terpinene	9.89	0.00	50.90	18.80	50.90	0.67
29	terpinolene	10.98	0.00	27.24	8.87	27.24	0.36
30	2-nonanone	11.10	0.00	33.20	11.68	33.20	0.44
31		11.29	0.00	33.88	11.72	33.88	0.45
32	linalool	11.43	0.00	154.12	52.19	154.12	2.03
33		11.58	0.00	10.75	3.54	10.75	0.14
34		11.93	0.00	4.26	1.43	4.26	0.06
35		13.33	0.00	2.82	1.03	2.82	0.04
36		13.51	0.00	56.61	16.45	56.61	0.75
37		13.98	0.00	5.24	1.36	5.24	0.07
38		14.44	0.00	46.43	14.21	46.43	0.61
39	alpha terpineol	14.85	0.00	135.17	25.19	135.17	1.78
40		14.99	0.00	84.54	28.01	84.54	1.11

3681

Instrument 6890

C:\HPCHEM\2\DATA\2023\  
36810000.D

Helichrysum Serotinum ORG

HP-5 5% Phenyl Methyl Siloxane

3681-IBFN

30.000m

France

250.000um

Helichrysum italicum var.

0.250um

serotinum

Sample/Solvent: 0.08g/0.52g

Injection Amount: 0.2uL

15:1 Split Ratio

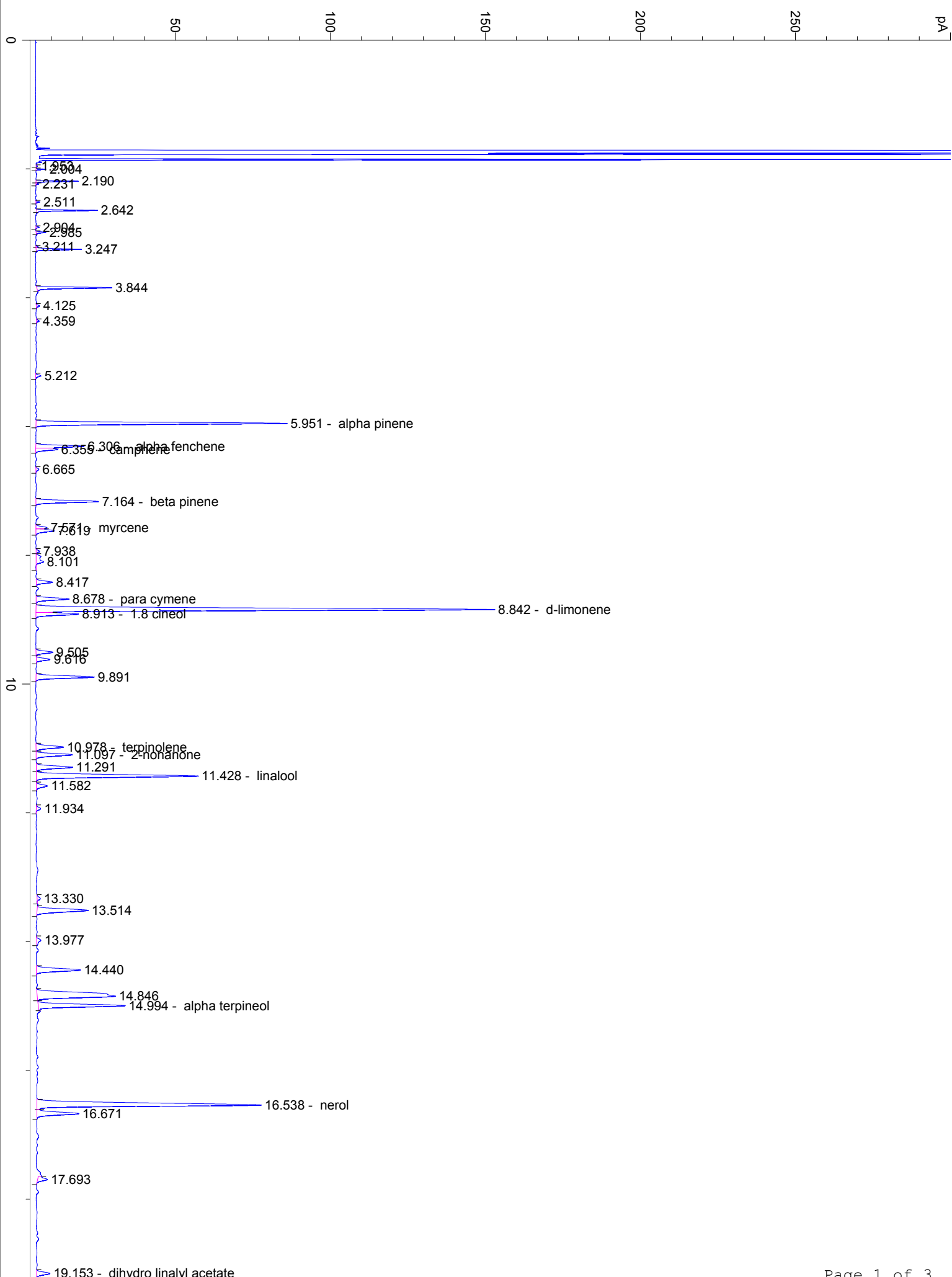
9/28/2023 1:22:24 PM

10/11/2023

9/28/2023 1:22:24 PM

11:56:16 AM

#	Compound Name	Meas. Ret.	Amount	Response	Height	Area	Area %
41	nerol	16.54	0.00	249.91	72.34	249.91	3.30
42		16.67	0.00	44.38	13.54	44.38	0.59
43		17.69	0.00	10.04	3.11	10.04	0.13
44	dihydro linalyl acetate	19.15	0.00	13.49	4.33	13.49	0.18
45	neryl acetate	22.12	0.00	2489.79	424.75	2489.79	32.83
46	geranyl acetate	22.42	0.00	49.87	14.20	49.87	0.66
47		22.75	0.00	6.31	2.01	6.31	0.08
48		23.01	0.00	11.43	3.50	11.43	0.15
49	isoitalicene	23.32	0.00	6.10	1.65	6.10	0.08
50	italicene	23.49	0.00	192.00	52.56	192.00	2.53
51		23.68	0.00	4.65	1.64	4.65	0.06
52		23.95	0.00	23.88	6.97	23.88	0.31
53		24.07	0.00	10.11	3.14	10.11	0.13
54	cis-alpha bergamotene	24.73	0.00	23.73	5.05	23.73	0.31
55	beta caryophyllene	24.96	0.00	344.99	76.39	344.99	4.55
56	italidone I	25.48	0.00	412.57	114.55	412.57	5.44
57		25.58	0.00	17.28	3.48	17.28	0.23
58		25.78	0.00	16.08	4.68	16.08	0.21
59		25.88	0.00	18.27	5.31	18.27	0.24
60	gamma curcumene	26.45	0.00	784.83	197.93	784.83	10.35
61	alpha curcumene	26.56	0.00	389.07	102.27	389.07	5.13
62	italidone II	26.77	0.00	227.14	46.91	227.14	2.99
63		27.24	0.00	8.03	2.19	8.03	0.11
64		27.36	0.00	6.32	1.81	6.32	0.08
65		27.49	0.00	10.66	2.66	10.66	0.14
66	alpha muurolene	27.65	0.00	93.37	21.32	93.37	1.23
67		28.02	0.00	10.00	2.05	10.00	0.13
68		28.14	0.00	8.98	1.69	8.98	0.12
69		28.37	0.00	12.33	2.66	12.33	0.16
70		28.74	0.00	6.14	1.81	6.14	0.08
71	italidone III	29.92	0.00	80.85	12.35	80.85	1.07
72		30.10	0.00	63.10	9.63	63.10	0.83
73		30.25	0.00	28.60	7.03	28.60	0.38
74		30.37	0.00	19.13	4.53	19.13	0.25
75		30.43	0.00	13.84	4.02	13.84	0.18
76		30.55	0.00	20.49	4.51	20.49	0.27
77		30.70	0.00	44.97	12.54	44.97	0.59
78	beta ceryophyllene	31.03	0.00	77.48	21.36	77.48	1.02
79		31.76	0.00	13.72	3.90	13.72	0.18
80		31.86	0.00	16.16	4.51	16.16	0.21
81		31.96	0.00	29.20	8.11	29.20	0.39
82	gamma eudesmol	32.48	0.00	26.24	7.30	26.24	0.35
83		32.59	0.00	20.41	5.14	20.41	0.27
84		32.74	0.00	6.89	1.83	6.89	0.09
85	alpha eudesmol	33.10	0.00	6.38	2.16	6.38	0.08
86		36.39	0.00	9.66	2.27	9.66	0.13
87		36.94	0.00	17.13	4.47	17.13	0.23
88		56.50	0.00	10.64	2.27	10.64	0.14





40

50

56.503

min