

Jasmine Sambac Absolute
3931-BBFK
India
Jasminum sambac

HP-5 5% Phenyl Methyl Siloxane
30.000m
250.000um
0.250um

Sample Ratio: 0.06g/0.40g/0.10g (
alcohol)

Injection Amount: 0.2uL

20:1 Split Ratio

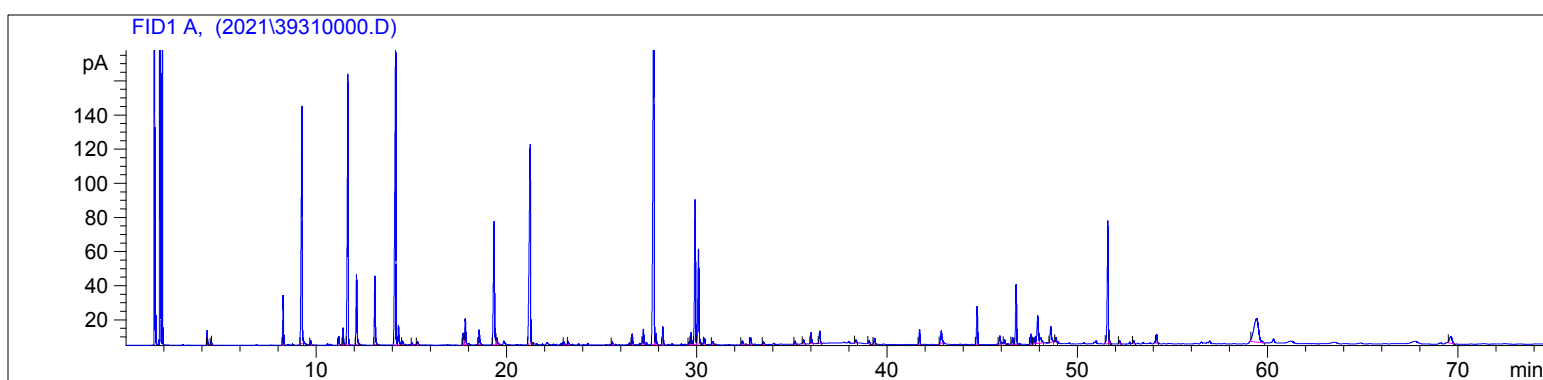
->

4/2/2021 1:29:10 PM

4/2/2021 1:29:10 PM

4/2/2021

3:02:12 PM



#	Compound Name	Meas. Ret.	Amount	Response	Height	Area	Area %
1	cis-3-hexenol	4.26	100.00	17.51	8.56	17.51	0.28
2		4.46	100.00	4.75	2.22	4.75	0.08
3		4.50	100.00	1.63	1.15	1.63	0.03
4	cis-3-hexynyl acetate	8.25	100.00	74.68	29.21	74.68	1.19
5	benzyl alcohol	9.24	100.00	521.89	138.16	521.89	8.30
6		9.71	100.00	6.84	2.62	6.84	0.11
7	trans-linalool oxide	11.19	100.00	15.66	5.16	15.66	0.25
8	methyl benzoate	11.42	100.00	30.93	9.96	30.93	0.49
9	linalool	11.67	100.00	542.41	157.98	542.41	8.63
10	2-phenylethyl alcohol	12.13	100.00	137.91	40.69	137.91	2.19
11	phenylacetonitrile	13.09	100.00	136.34	40.02	136.34	2.17
12	benzyl acetate	14.18	100.00	702.74	177.87	702.74	11.18
13	ethyl benzoate	14.33	100.00	39.53	11.27	39.53	0.63
14		14.54	100.00	6.90	2.02	6.90	0.11
15		15.05	100.00	3.97	1.34	3.97	0.06
16		15.33	100.00	7.89	2.05	7.89	0.13
17		17.73	100.00	23.69	6.63	23.69	0.38
18	geraniol	17.84	100.00	59.46	15.25	59.46	0.95
19		18.57	100.00	32.56	8.52	32.56	0.52
20	indole	19.35	100.00	305.24	72.06	305.24	4.85
21		19.50	100.00	16.66	3.83	16.66	0.27
22	methyl anthranilate	21.25	100.00	543.44	116.90	543.44	8.64
23		21.32	100.00	1.83	0.62	1.83	0.03
24		23.04	100.00	4.39	1.50	4.39	0.07
25		23.25	100.00	5.78	1.83	5.78	0.09
26		25.56	100.00	6.75	1.88	6.75	0.11
27	germacrene D	26.61	100.00	22.06	6.32	22.06	0.35
28	bicyclogermacrene	27.20	100.00	30.09	8.69	30.09	0.48
29	(E,E)-alpha-farnesene	27.76	100.00	1120.40	262.22	1120.40	17.82
30	gamma cadinene	27.86	100.00	26.49	6.70	26.49	0.42
31	delta cadinene	28.22	100.00	37.63	10.57	37.63	0.60
32		29.61	100.00	5.57	1.65	5.57	0.09
33	germacreneD-4-ol	29.71	100.00	24.76	6.94	24.76	0.39

3931-BBFK

Instrument 6890

C:\HPCHEM\2\DATA\2021\
39310000.D

Jasmine Sambac Absolute

HP-5 5% Phenyl Methyl Siloxane

3931-BBFK

30.000m

India

250.000um

Jasminum sambac

0.250um

Sample Ratio: 0.06g/0.40g/0.10g (
alcohol)

Injection Amount: 0.2uL

20:1 Split Ratio

->

4/2/2021 1:29:10 PM

4/2/2021

4/2/2021 1:29:10 PM

3:02:12 PM

#	Compound Name	Meas. Ret.	Amount	Response	Height	Area	Area %
34	trans-nerolidol	29.92	100.00	306.67	84.59	306.67	4.88
35	cis-3-hexenyl benzoate	30.10	100.00	219.71	55.28	219.71	3.49
36	hexyl benzoate	30.42	100.00	11.54	3.44	11.54	0.18
37		30.85	100.00	7.85	1.90	7.85	0.12
38		32.41	100.00	10.21	2.08	10.21	0.16
39		32.85	100.00	14.58	3.98	14.58	0.23
40		33.51	100.00	6.05	1.64	6.05	0.10
41		35.17	100.00	7.29	1.83	7.29	0.12
42		35.61	100.00	10.62	2.50	10.62	0.17
43	benzyl ester	36.01	100.00	24.44	6.41	24.44	0.39
44	benzyl benzoate	36.47	100.00	28.70	7.29	28.70	0.46
45		38.35	100.00	7.72	1.81	7.72	0.12
46		39.05	100.00	7.12	2.09	7.12	0.11
47		39.34	100.00	13.74	3.42	13.74	0.22
48		41.70	100.00	30.10	8.85	30.10	0.48
49		42.84	100.00	40.31	7.62	40.31	0.64
50	palmitic acid	44.73	100.00	81.22	22.29	81.22	1.29
51		45.92	100.00	18.77	4.75	18.77	0.30
52		46.17	100.00	7.65	2.42	7.65	0.12
53	methyl linoleate	46.59	100.00	15.03	3.98	15.03	0.24
54	mehtyl alpha-linoleate	46.78	100.00	128.94	34.85	128.94	2.05
55		47.56	100.00	20.39	5.87	20.39	0.32
56		47.72	100.00	14.67	3.51	14.67	0.23
57		47.91	100.00	77.32	16.26	77.32	1.23
58		48.06	100.00	20.39	3.15	20.39	0.32
59		48.59	100.00	43.98	9.23	43.98	0.70
60		48.87	100.00	8.29	2.74	8.29	0.13
61	trans-phytol acetate	51.60	100.00	271.58	71.79	271.58	4.32
62		51.65	100.00	6.21	2.10	6.21	0.10
63		52.22	100.00	7.49	1.83	7.49	0.12
64		52.96	100.00	6.54	1.77	6.54	0.10
65		54.16	100.00	18.30	5.13	18.30	0.29
66		59.41	100.00	239.84	13.92	239.84	3.81
67		69.61	100.00	35.61	3.85	35.61	0.57

