

3943-KACH

Instrument 6890

C:\HPCHEM\2\DATA\2020\
39430000.D

Jasmine Grandiflorum Absolute

HP-5 5% Phenyl Methyl Siloxane

3943-KACH

30.000m

Egypt

250.000um

Jasmine grandiflorum

0.250um

Sample/Solvent: 0.06/0.40g/0.12g
(alcohol)

Injection Amount: 0.2uL

20:1 Split Ratio

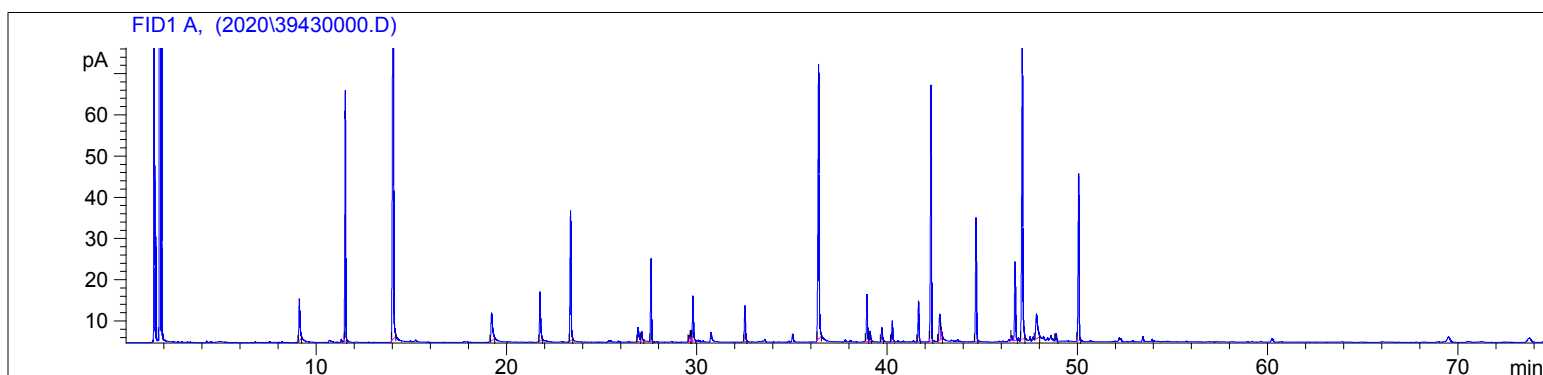
->

11/13/2020 1:03:20 PM

11/13/2020

11/13/2020 1:03:20 PM

2:39:42 PM



#	Compound Name	Meas. Ret.	Amount	Response	Height	Area	Area %
1	benzyl alcohol	9.10	100.00	40.55	10.21	40.55	1.63
2	linalool	11.54	100.00	177.71	60.60	177.71	7.14
3	benzyl acetate	14.06	100.00	524.54	139.04	524.54	21.07
4	indole	19.22	100.00	38.02	6.79	38.02	1.53
5	eugenol	21.77	100.00	49.14	11.88	49.14	1.97
6	cis-jasmone	23.37	100.00	116.50	31.45	116.50	4.68
7	germacrene D	26.92	100.00	18.28	3.47	18.28	0.73
8		27.11	100.00	9.15	2.25	9.15	0.37
9	alpha farnesene	27.61	100.00	66.23	19.94	66.23	2.66
10		29.60	100.00	5.60	1.52	5.60	0.22
11		29.69	100.00	9.88	2.64	9.88	0.40
12	cis-3-hexenyl benzoate	29.81	100.00	42.97	10.87	42.97	1.73
13	cis-methyl jasmonate	32.54	100.00	33.60	8.68	33.60	1.35
14	benzyl benzoate	36.41	100.00	280.31	66.40	280.31	11.26
15		38.94	100.00	42.90	11.38	42.90	1.72
16		39.10	100.00	10.05	2.47	10.05	0.40
17		39.72	100.00	13.16	3.36	13.16	0.53
18		40.27	100.00	18.41	5.02	18.41	0.74
19	methyl palmitate	41.64	100.00	35.19	9.86	35.19	1.41
20	isophytol	42.30	100.00	227.26	62.00	227.26	9.13
21		42.76	100.00	32.76	6.37	32.76	1.32
22		42.83	100.00	7.72	2.40	7.72	0.31
23	nerolidol	44.67	100.00	112.04	29.97	112.04	4.50
24	methyl linoleate	46.72	100.00	79.98	19.12	79.98	3.21
25	phytol	47.10	100.00	301.40	76.26	301.40	12.11
26		47.84	100.00	41.79	6.00	41.79	1.68
27		48.88	100.00	6.20	1.79	6.20	0.25
28	phytal acetate	50.06	100.00	148.49	40.48	148.49	5.96

