

4101 LZBA

Instrument 6890

C:\HPCHEM\2\DATA\2024\
41010000.D

Lavandin Sweet Org

HP-5 5% Phenyl Methyl Siloxane

4101-LZBA

30.000m

France

250.000um

Lavandula Hybrida

0.250um

Sample/Solvent: 0.05g/0.5g

Injection Amount: 0.2uL

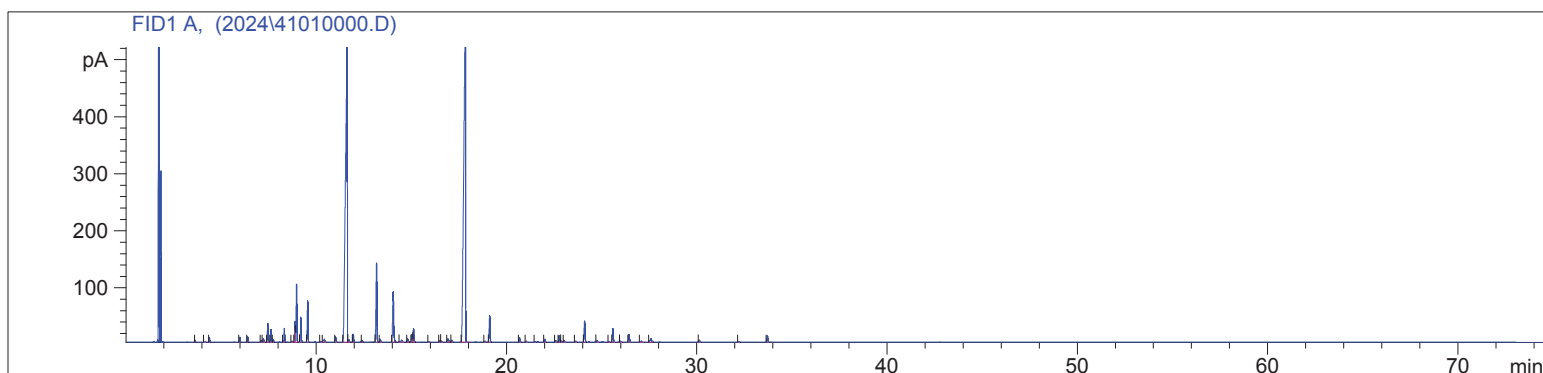
20:1 Split Ratio

12/4/2024 12:55:56 PM

12/4/2024

12/4/2024 12:55:56 PM

2:34:27 PM



#	Compound Name	Meas. Ret.	Amount	Response	Height	Area	Area %
1		3.63	0.00	4.84	3.31	4.84	0.05
2		4.15	0.00	3.03	1.02	3.03	0.03
3	trans-salvene	4.38	0.00	14.56	7.73	14.56	0.14
4	alpha pinene	5.98	0.00	19.23	8.61	19.23	0.19
5	camphene	6.39	0.00	22.83	9.76	22.83	0.23
6	sabinene	7.09	0.00	5.99	2.57	5.99	0.06
7	beta pinene	7.21	0.00	20.41	5.84	20.41	0.20
8	3-octanone	7.44	0.00	78.42	32.61	78.42	0.78
9	myrcene	7.61	0.00	56.71	21.91	56.71	0.56
10		7.74	0.00	11.76	4.65	11.76	0.12
11	alpha phellandrene	8.31	0.00	61.71	23.97	61.71	0.61
12		8.72	0.00	4.21	1.66	4.21	0.04
13	d-limonene	8.88	0.00	107.31	36.67	107.31	1.07
14	1.8 cineol	8.96	0.00	277.06	101.33	277.06	2.76
15	cis beta ocimene	9.18	0.00	115.67	43.72	115.67	1.15
16	trans beta ocimene	9.56	0.00	191.98	72.90	191.98	1.91
17		10.24	0.00	3.25	1.09	3.25	0.03
18	cis linalool oxide	10.43	0.00	23.86	5.25	23.86	0.24
19	terpinolene	11.03	0.00	27.90	9.15	27.90	0.28
20	linalool	11.63	0.00	3484.97	521.80	3484.97	34.66
21		11.73	0.00	14.95	3.92	14.95	0.15
22		11.95	0.00	37.79	13.68	37.79	0.38
23		12.42	0.00	9.25	2.86	9.25	0.09
24	camphor	13.18	0.00	470.11	138.57	470.11	4.68
25		13.37	0.00	16.29	5.12	16.29	0.16
26	borneol + lavandulol	14.05	0.00	322.90	88.00	322.90	3.21
27	terpin-4-ol	14.50	0.00	14.70	3.69	14.70	0.15
28		14.81	0.00	17.66	5.28	17.66	0.18
29		15.04	0.00	38.48	12.56	38.48	0.38
30	alpha terpineol	15.12	0.00	70.99	23.59	70.99	0.71
31		15.91	0.00	2.84	0.95	2.84	0.03
32		16.51	0.00	7.98	2.46	7.98	0.08
33		16.58	0.00	7.14	1.91	7.14	0.07
34		16.93	0.00	21.66	5.34	21.66	0.22
35		17.13	0.00	10.46	3.13	10.46	0.10
36	linalyl acetate	17.85	0.00	3797.69	600.51	3797.69	37.77
37		18.87	0.00	5.19	1.62	5.19	0.05
38	lavandulyl acetate	19.12	0.00	152.42	46.34	152.42	1.52
39		20.69	0.00	26.32	8.13	26.32	0.26
40		21.04	0.00	5.58	1.70	5.58	0.06

4101 LZBA

Instrument 6890

C:\HPCHEM\2\DATA\2024\
41010000.D

Lavandin Sweet Org
4101-LZBA
France
Lavandula Hybrida
Sample/Solvent: 0.05g/0.5g
Injection Amount: 0.2uL
20:1 Split Ratio

HP-5 5% Phenyl Methyl Siloxane
30.000m
250.000um
0.250um

12/4/2024 12:55:56 PM
12/4/2024 12:55:56 PM

12/4/2024
2:34:27 PM

#	Compound Name	Meas. Ret.	Amount	Response	Height	Area	Area %
41		21.51	0.00	4.39	1.33	4.39	0.04
42	neryl acetate	22.02	0.00	16.80	5.12	16.80	0.17
43		22.59	0.00	8.45	2.12	8.45	0.08
44	geranyl acetate	22.78	0.00	38.45	10.98	38.45	0.38
45		22.89	0.00	7.26	2.14	7.26	0.07
46		23.03	0.00	7.44	2.10	7.44	0.07
47		23.64	0.00	5.78	1.90	5.78	0.06
48	beta caryophyllene	24.11	0.00	130.86	37.10	130.86	1.30
49		24.76	0.00	6.95	1.92	6.95	0.07
50		25.40	0.00	3.81	1.09	3.81	0.04
51	trans beta famesene	25.60	0.00	79.80	23.38	79.80	0.79
52		26.01	0.00	4.82	1.54	4.82	0.05
53	germacrene D	26.45	0.00	46.87	13.26	46.87	0.47
54		27.08	0.00	11.46	1.80	11.46	0.11
55		27.60	0.00	37.35	6.38	37.35	0.37
56		30.14	0.00	13.01	3.51	13.01	0.13
57		32.21	0.00	5.14	1.40	5.14	0.05
58		33.72	0.00	40.10	11.56	40.10	0.40

