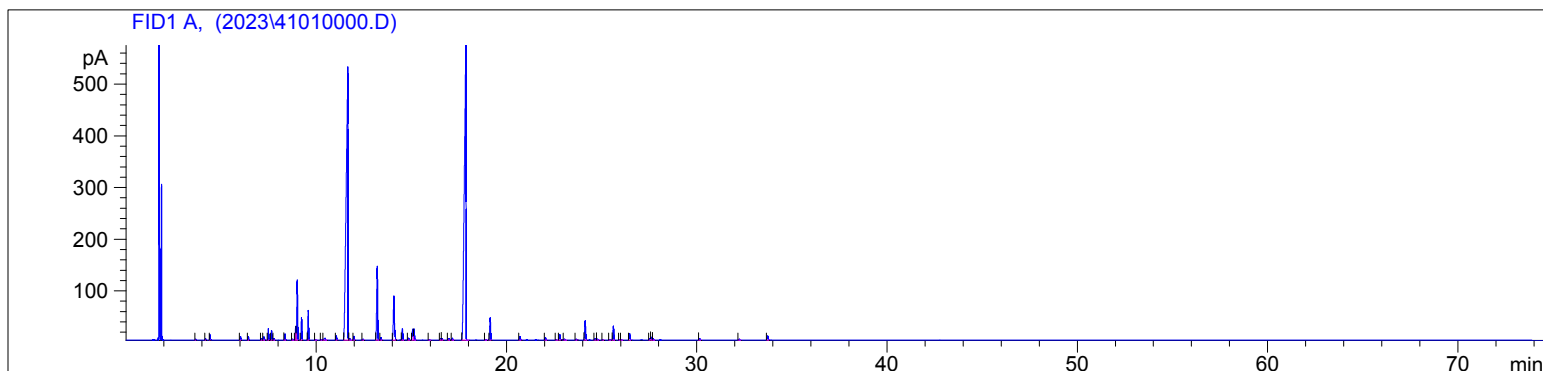


Lavandin Sweet ORG
4101-LZGN
France
Lavandula hybrida
Sample/Solvent: 0.06g/0.52g
Injection Amount: 0.2uL
20:1 Split Ratio

HP-5 5% Phenyl Methyl Siloxane
30.000m
250.000um
0.250um

12/11/2023 1:25:32 PM
12/11/2023 1:25:32 PM

1/11/2024
10:57:46 AM



#	Compound Name	Meas. Ret.	Amount	Response	Height	Area	Area %
1		3.66	0.00	2.94	2.01	2.94	0.03
2		4.18	0.00	4.80	2.64	4.80	0.05
3	trans-salvene	4.41	0.00	20.55	11.00	20.55	0.21
4	alpha pinene	6.01	0.00	16.33	7.31	16.33	0.17
5	camphene	6.42	0.00	16.29	6.95	16.29	0.17
6	sabinene	7.13	0.00	5.55	2.38	5.55	0.06
7	beta pinene	7.24	0.00	20.93	6.54	20.93	0.22
8	3-octanone	7.47	0.00	54.22	22.40	54.22	0.56
9	myrcene	7.64	0.00	45.17	18.35	45.17	0.47
10		7.77	0.00	8.71	3.38	8.71	0.09
11	alpha phellandrene	8.35	0.00	29.52	11.84	29.52	0.31
12		8.75	0.00	4.72	1.87	4.72	0.05
13	d-limonene	8.92	0.00	75.07	26.10	75.07	0.78
14	1.8 cineol	8.99	0.00	319.99	116.23	319.99	3.31
15	cis-beta ocimene	9.22	0.00	111.15	43.04	111.15	1.15
16	trans-beta ocimene	9.59	0.00	150.93	57.37	150.93	1.56
17		9.97	0.00	3.08	1.12	3.08	0.03
18		10.28	0.00	5.29	1.76	5.29	0.05
19	cis-linalool oxide	10.47	0.00	18.97	3.69	18.97	0.20
20	terpinolene	11.06	0.00	24.32	8.01	24.32	0.25
21	linalool	11.67	0.00	3495.33	526.57	3495.33	36.17
22		11.76	0.00	12.02	3.21	12.02	0.12
23		11.99	0.00	20.29	7.47	20.29	0.21
24		12.46	0.00	7.08	2.19	7.08	0.07
25	camphor	13.22	0.00	481.20	142.71	481.20	4.98
26		13.41	0.00	15.04	4.92	15.04	0.16
27	borneol + lavandulol	14.09	0.00	334.32	85.26	334.32	3.46
28	terpin-4-ol	14.53	0.00	66.48	21.67	66.48	0.69
29		14.85	0.00	13.68	4.13	13.68	0.14
30		15.08	0.00	66.89	21.11	66.89	0.69
31	alpha terpineol	15.15	0.00	63.77	21.52	63.77	0.66
32		15.94	0.00	3.23	1.07	3.23	0.03
33		16.54	0.00	7.99	2.53	7.99	0.08
34	nerol	16.61	0.00	10.70	2.98	10.70	0.11
35		16.96	0.00	13.70	3.35	13.70	0.14
36		17.16	0.00	12.33	3.69	12.33	0.13
37	linalyl acetate	17.87	0.00	3480.31	575.28	3480.31	36.01
38		18.90	0.00	4.11	1.28	4.11	0.04
39	lavandulyl acetate	19.15	0.00	136.30	43.09	136.30	1.41
40		20.71	0.00	22.44	6.96	22.44	0.23

4101

Instrument 6890

C:\HPCHEM\2\DATA\2023\
41010000.D

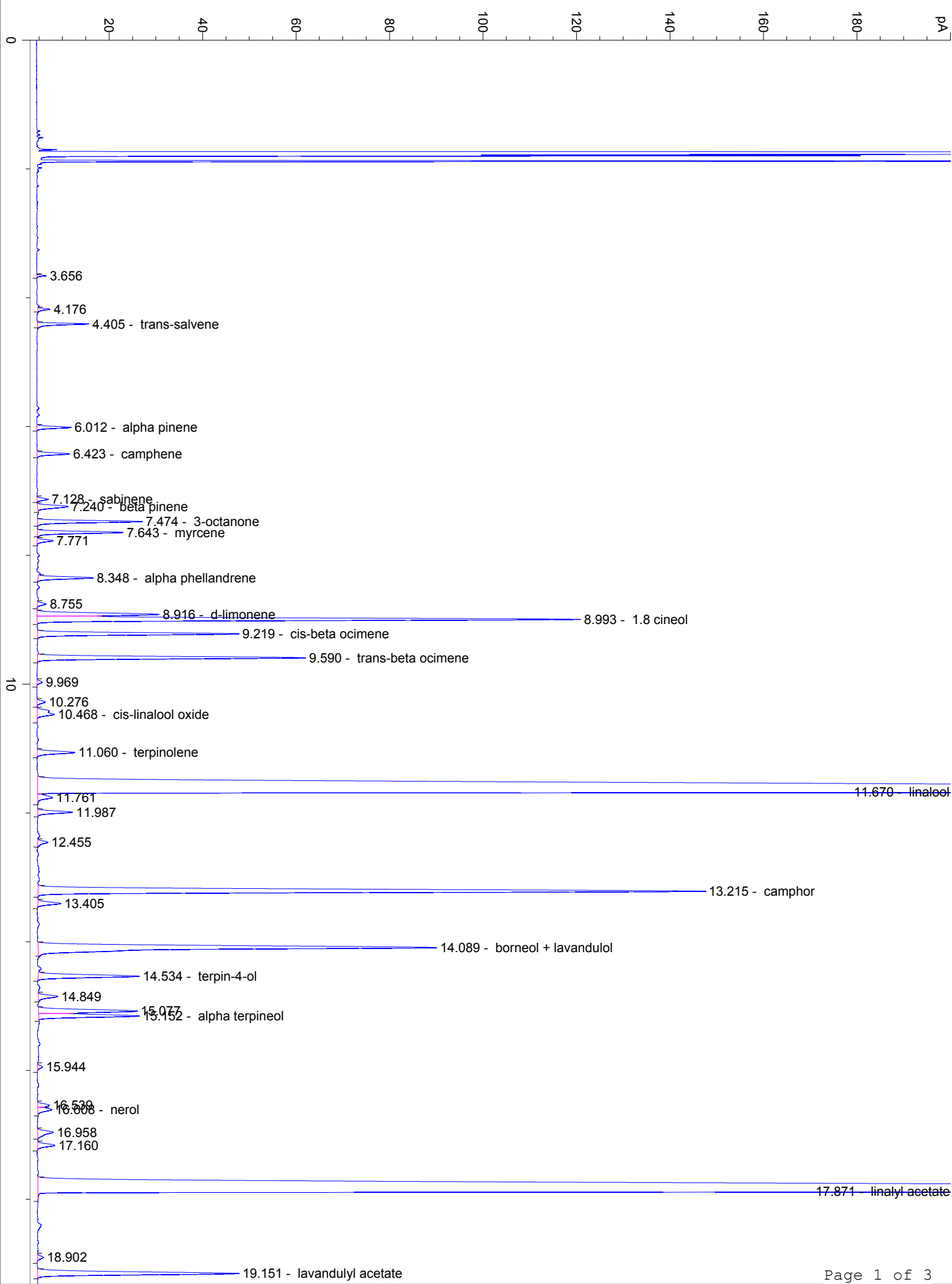
Lavender Sweet ORG
4101-LZGN
France
Lavandula hybrida
Sample/Solvent: 0.06g/0.52g
Injection Amount: 0.2uL
20:1 Split Ratio

HP-5 5% Phenyl Methyl Siloxane
30.000m
250.000um
0.250um

12/11/2023 1:25:32 PM
12/11/2023 1:25:32 PM

1/11/2024
10:57:46 AM

#	Compound Name	Meas. Ret.	Amount	Response	Height	Area	Area %
41	neryl acetate	22.05	0.00	17.73	5.37	17.73	0.18
42		22.62	0.00	5.11	1.42	5.11	0.05
43	geranyl acetate	22.80	0.00	32.07	10.39	32.07	0.33
44		23.06	0.00	7.71	2.19	7.71	0.08
45		23.67	0.00	5.49	1.91	5.49	0.06
46	beta caryophyllene	24.14	0.00	132.95	37.07	132.95	1.38
47		24.66	0.00	11.56	2.62	11.56	0.12
48		24.79	0.00	8.39	2.16	8.39	0.09
49		25.07	0.00	3.66	1.14	3.66	0.04
50		25.42	0.00	4.00	1.18	4.00	0.04
51	trans-beta farnesene	25.62	0.00	91.07	26.99	91.07	0.94
52		25.94	0.00	3.72	1.16	3.72	0.04
53		26.03	0.00	4.31	1.26	4.31	0.04
54	germacrene D	26.47	0.00	44.11	12.77	44.11	0.46
55		27.55	0.00	11.30	3.50	11.30	0.12
56		27.62	0.00	19.94	5.70	19.94	0.21
57		27.71	0.00	10.01	2.78	10.01	0.10
58		30.16	0.00	9.76	2.62	9.76	0.10
59		32.24	0.00	7.06	1.86	7.06	0.07
60		33.74	0.00	28.38	7.95	28.38	0.29



20

20.714

22.046 - neryl acetate

22.621

22.804 - geranyl acetate

23.059

23.667

24.140 - beta caryophyllene

24.658

24.789

25.069

25.425

25.625 - trans-beta farnesene

25.938

26.033

26.475 - germacrene D

27.549

27.708

30

30.161

32.236

33.737

40

50

min