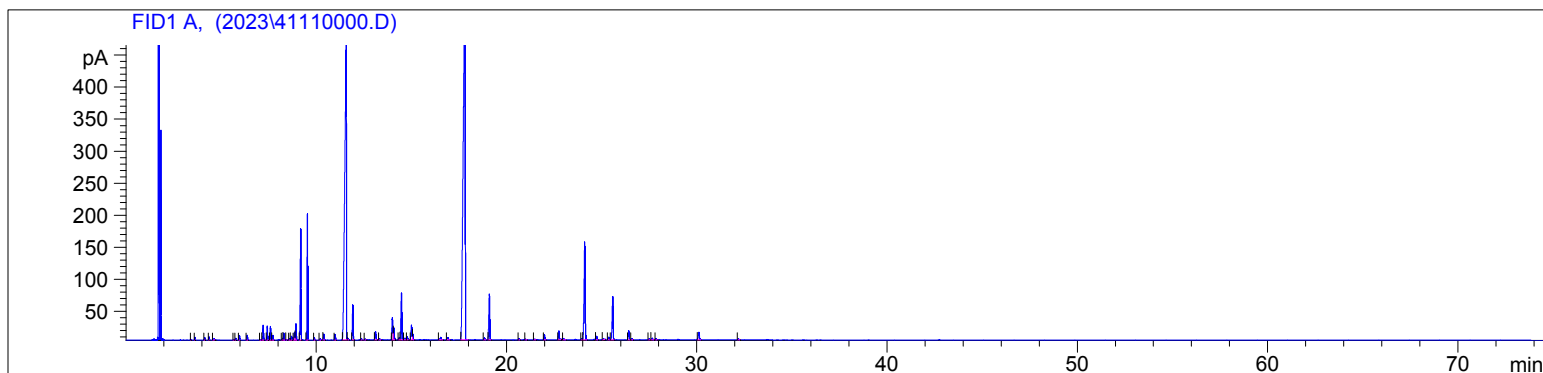


4111

Instrument 6890

C:\HPCHEM\2\DATA\2023\  
41110000.DLavender Extra ORG  
4111-LZGN  
France  
Lavandula angustifolia M.  
Sample/Solvent: 0.06g/0.51g  
Injection Amount: 0.2uL  
20:1 Split RatioHP-5 5% Phenyl Methyl Siloxane  
30.000m  
250.000um  
0.250um12/11/2023 11:24:03 AM  
12/11/2023 11:24:03 AM1/5/2024  
12:16:42 PM

#	Compound Name	Meas. Ret.	Amount	Response	Height	Area	Area %
1		3.41	0.00	1.75	1.21	1.75	0.02
2		3.61	0.00	6.30	4.39	6.30	0.06
3		4.13	0.00	6.82	3.83	6.82	0.06
4		4.36	0.00	8.59	4.76	8.59	0.08
5		4.62	0.00	6.39	2.01	6.39	0.06
6		5.66	0.00	1.60	0.76	1.60	0.01
7	alpha thujene	5.76	0.00	5.73	2.78	5.73	0.05
8	alpha pinene	5.96	0.00	16.23	6.97	16.23	0.15
9	camphene	6.37	0.00	17.89	7.60	17.89	0.17
10	sabinene	7.07	0.00	2.36	1.11	2.36	0.02
11	beta pinne	7.20	0.00	62.25	23.57	62.25	0.58
12	3-octanone	7.42	0.00	50.89	21.58	50.89	0.47
13	myrcene	7.58	0.00	53.12	21.50	53.12	0.50
14		7.71	0.00	18.36	7.44	18.36	0.17
15		8.22	0.00	5.91	2.48	5.91	0.06
16		8.29	0.00	27.20	10.87	27.20	0.25
17		8.43	0.00	2.26	0.97	2.26	0.02
18		8.60	0.00	6.40	2.46	6.40	0.06
19	beta phellandrene	8.69	0.00	15.54	5.96	15.54	0.14
20	d-limonene	8.85	0.00	32.15	11.62	32.15	0.30
21	1.8 cineol	8.92	0.00	68.12	25.23	68.12	0.63
22	cis beta ocimene	9.17	0.00	464.40	173.17	464.40	4.33
23	trans beta ocimene	9.55	0.00	533.06	196.94	533.06	4.97
24		9.91	0.00	9.49	3.48	9.49	0.09
25		10.21	0.00	5.71	1.87	5.71	0.05
26		10.41	0.00	27.60	9.24	27.60	0.26
27		11.00	0.00	27.34	8.85	27.34	0.25
28	linalool	11.59	0.00	2759.41	465.40	2759.41	25.72
29		11.66	0.00	8.24	2.45	8.24	0.08
30		11.93	0.00	151.06	54.56	151.06	1.41
31		12.39	0.00	4.58	1.60	4.58	0.04
32		12.58	0.00	4.44	1.51	4.44	0.04
33	camphor	13.12	0.00	43.01	12.93	43.01	0.40
34		13.34	0.00	4.81	1.52	4.81	0.04
35	borneol	14.01	0.00	111.95	34.36	111.95	1.04
36	lavandulol	14.08	0.00	58.97	18.49	58.97	0.55
37		14.36	0.00	10.75	3.46	10.75	0.10
38	terpin-4-ol	14.49	0.00	239.11	73.24	239.11	2.23
39		14.67	0.00	11.22	2.96	11.22	0.10
40		14.79	0.00	15.55	4.51	15.55	0.14

4111

Instrument 6890

C:\HPCHEM\2\DATA\2023\41110000.D

Lavender Extra ORG  
4111-LZGN  
France  
Lavandula angustifolia M.  
Sample/Solvent: 0.06g/0.51g  
Injection Amount: 0.2uL  
20:1 Split Ratio

HP-5 5% Phenyl Methyl Siloxane  
30.000m  
250.000um  
0.250um

12/11/2023 11:24:03 AM  
12/11/2023 11:24:03 AM

1/5/2024  
12:16:42 PM

#	Compound Name	Meas. Ret.	Amount	Response	Height	Area	Area %
41	alpha terpineol	15.01	0.00	74.99	23.16	74.99	0.70
42		15.09	0.00	24.42	8.76	24.42	0.23
43	nerol	16.55	0.00	19.43	3.92	19.43	0.18
44		16.93	0.00	15.44	3.73	15.44	0.14
45	linalyl acetate	17.83	0.00	4339.63	647.84	4339.63	40.45
46		18.85	0.00	9.84	3.04	9.84	0.09
47	lavandulyl acetate	19.11	0.00	235.26	71.61	235.26	2.19
48		20.66	0.00	4.96	1.53	4.96	0.05
49		21.01	0.00	3.74	1.18	3.74	0.03
50		21.49	0.00	3.48	1.25	3.48	0.03
51	neryl acetate	22.00	0.00	26.87	8.19	26.87	0.25
52	geranyl acetate	22.76	0.00	43.70	13.85	43.70	0.41
53		23.01	0.00	6.36	1.80	6.36	0.06
54		23.97	0.00	5.90	1.78	5.90	0.05
55	beta caryophyllene	24.12	0.00	591.57	152.42	591.57	5.51
56		24.74	0.00	18.29	5.64	18.29	0.17
57		25.10	0.00	4.71	1.22	4.71	0.04
58		25.38	0.00	15.81	4.42	15.81	0.15
59	alpha humulene	25.59	0.00	241.53	67.59	241.53	2.25
60	germacrene D	26.43	0.00	50.07	13.99	50.07	0.47
61		26.59	0.00	7.60	2.14	7.60	0.07
62		27.50	0.00	7.90	1.77	7.90	0.07
63		27.66	0.00	9.76	2.62	9.76	0.09
64		27.87	0.00	6.05	1.90	6.05	0.06
65	caryophyllene oxide	30.12	0.00	49.01	12.30	49.01	0.46
66		32.19	0.00	6.55	1.84	6.55	0.06





40

50

min