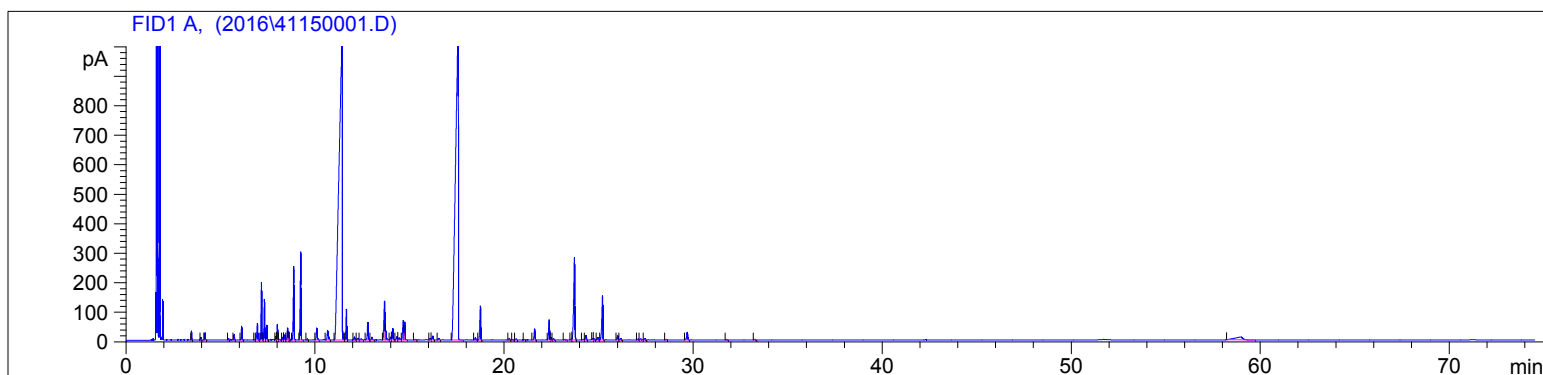


Lavender Maillette (Organic)
4115-LLBGT
France
lavandula angustifolia
Sample/Hexane: 0.11g/0.20g
Injection: 0.2uL

HP-5 5% Phenyl Methyl Siloxane
30.000m
250.000um
0.250um

12/28/2016 12:21:40 PM
12/28/2016 12:21:40 PM

12/30/2016
1:25:52 PM



#	Compound Name	Meas. Ret.	Amount	Response	Height	Area	Area %
1		3.46	0.00	46.21	30.27	46.21	0.14
2		3.95	0.00	18.79	9.25	18.79	0.06
3		4.17	0.00	48.04	23.93	48.04	0.15
4	alpha thujene	5.42	100.00	9.45	4.40	9.45	0.03
5	alpha pinene	5.71	100.00	41.92	17.40	41.92	0.13
6	camphene	6.11	100.00	111.10	46.84	111.10	0.34
7	sabinene	6.80	100.00	6.62	2.80	6.62	0.02
8	beta pinene	6.94	100.00	180.42	55.89	180.42	0.55
9	beta octumene	7.16	100.00	488.62	194.54	488.62	1.50
10	myrcene	7.32	100.00	345.87	137.59	345.87	1.06
11		7.44	0.00	126.53	50.42	126.53	0.39
12	alpha phellandrene	0.00	0.00	0.00	0.00	0.00	0.00
13		7.92	0.00	29.87	12.15	29.87	0.09
14		8.00	0.00	133.21	53.03	133.21	0.41
15		8.13	0.00	10.62	2.97	10.62	0.03
16		8.30	0.00	24.77	9.56	24.77	0.08
17	beta phellandrene	8.39	100.00	44.76	17.23	44.76	0.14
18	d-limonene	8.54	100.00	113.85	40.44	113.85	0.35
19	1.8 cineol	8.61	100.00	72.42	26.90	72.42	0.22
20	cis beta ocimene	8.87	100.00	697.69	249.25	697.69	2.14
21	trans beta ocimene	9.24	100.00	856.71	298.90	856.71	2.63
22		9.58	0.00	10.78	3.97	10.78	0.03
23	cis-linalool oxide	10.08	100.00	148.17	40.79	148.17	0.45
24	terpinolene	10.66	100.00	136.45	31.24	136.45	0.42
25	linalool	11.43	100.00	12570.90	1075.68	12570.90	38.56
26	beta phenylethyl alcohol	11.65	100.00	275.49	103.77	275.49	0.85
27		12.08	0.00	28.96	10.18	28.96	0.09
28		12.24	0.00	18.22	5.71	18.22	0.06
29		12.42	0.00	16.47	3.10	16.47	0.05
30	camphor	12.79	100.00	196.35	60.05	196.35	0.60
31		13.00	0.00	31.31	9.85	31.31	0.10
32	borneol	13.67	100.00	488.41	131.45	488.41	1.50
33	lavandulol	13.73	100.00	96.06	32.65	96.06	0.29
34		14.00	0.00	32.39	9.54	32.39	0.10
35	terpin-4-ol	14.10	100.00	120.32	38.53	120.32	0.37
36		14.33	0.00	44.45	10.74	44.45	0.14
37		14.43	0.00	39.67	6.57	39.67	0.12

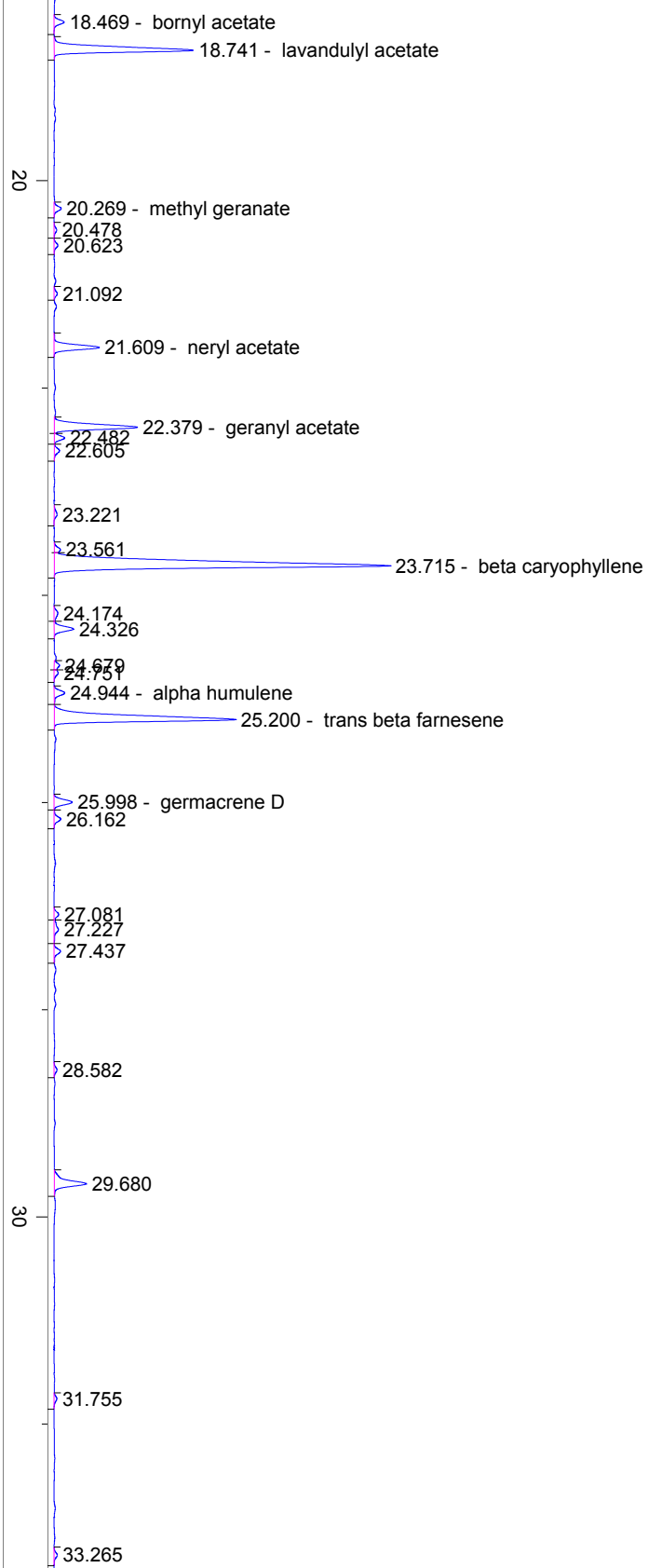
4115-LLBGT

Instrument 6890

C:\HPCHEM\2\DATA\2016\
41150001.DLavender Maillette (Organic)
4115-LLBGT
France
lavandula angustifolia
Sample/Hexane: 0.11g/0.20g
Injection: 0.2uLHP-5 5% Phenyl Methyl Siloxane
30.000m
250.000um
0.250um12/28/2016 12:21:40 PM
12/28/2016 12:21:40 PM12/30/2016
1:25:52 PM

#	Compound Name	Meas. Ret.	Amount	Response	Height	Area	Area %
38	alpha terpineol	14.66	100.00	249.77	66.17	249.77	0.77
39		14.74	0.00	179.92	60.60	179.92	0.55
40		15.30	0.00	10.10	2.51	10.10	0.03
41		16.09	0.00	19.00	5.80	19.00	0.06
42	nerol	16.22	100.00	54.30	13.48	54.30	0.17
43		16.53	0.00	23.01	5.42	23.01	0.07
44	linalyl acetate	17.57	100.00	11067.87	1109.90	11067.87	33.95
45	bornyl acetate	18.47	100.00	26.14	8.15	26.14	0.08
46	lavandulyl acetate	18.74	100.00	387.01	115.08	387.01	1.19
47	methyl geranate	20.27	100.00	19.33	5.90	19.33	0.06
48		20.48	0.00	7.12	2.12	7.12	0.02
49		20.62	0.00	10.49	3.12	10.49	0.03
50		21.09	0.00	9.16	2.64	9.16	0.03
51	neryl acetate	21.61	100.00	123.81	37.35	123.81	0.38
52	geranyl acetate	22.38	100.00	236.79	68.69	236.79	0.73
53		22.48	0.00	26.98	8.60	26.98	0.08
54		22.60	0.00	16.28	4.40	16.28	0.05
55		23.22	0.00	10.12	2.44	10.12	0.03
56		23.56	0.00	16.37	5.09	16.37	0.05
57	beta caryophyllene	23.72	100.00	1185.53	277.53	1185.53	3.64
58		24.17	0.00	14.42	3.02	14.42	0.04
59		24.33	0.00	55.00	16.00	55.00	0.17
60		24.68	0.00	15.60	4.43	15.60	0.05
61		24.75	0.00	11.29	3.26	11.29	0.03
62	alpha humulene	24.94	100.00	31.41	8.76	31.41	0.10
63	trans beta farnesene	25.20	100.00	562.72	149.61	562.72	1.73
64	germacrene D	26.00	100.00	53.43	14.98	53.43	0.16
65		26.16	0.00	20.03	5.55	20.03	0.06
66		27.08	0.00	13.26	3.77	13.26	0.04
67		27.23	0.00	19.53	3.61	19.53	0.06
68		27.44	0.00	20.49	5.39	20.49	0.06
69		28.58	0.00	8.82	2.38	8.82	0.03
70		29.68	0.00	109.76	26.53	109.76	0.34
71		31.75	0.00	8.54	2.31	8.54	0.03
72		33.26	0.00	9.52	2.57	9.52	0.03





40

50

