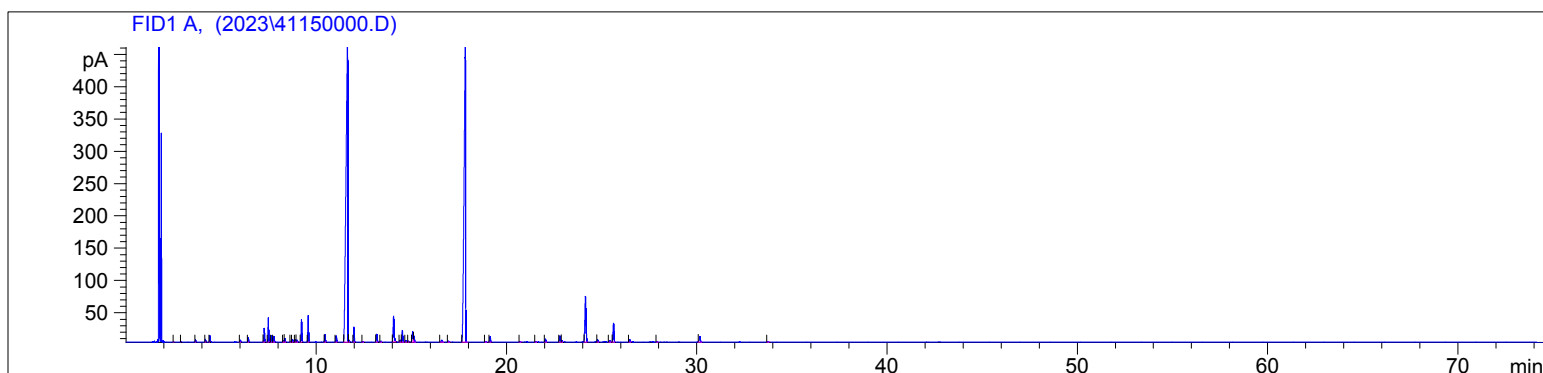


Lavender Maillette ORG
4115-LZGN
France
Lavandula angustifolia
Sample/Solvent: 0.05g/0.52g
Injection Amount: 0.2uL
20:1 Split Ratio

HP-5 5% Phenyl Methyl Siloxane
30.000m
250.000um
0.250um

12/8/2023 11:34:53 AM
12/8/2023 11:34:53 AM

12/14/2023
3:33:00 PM



#	Compound Name	Meas. Ret.	Amount	Response	Height	Area	Area %
1		2.50	0.00	0.50	0.47	0.50	0.01
2		2.88	0.00	0.71	0.55	0.71	0.01
3		3.65	0.00	5.57	3.86	5.57	0.08
4		4.17	0.00	7.88	4.43	7.88	0.11
5		4.40	0.00	18.25	9.80	18.25	0.26
6	alpha pinene	6.01	0.00	7.31	3.05	7.31	0.10
7	camphene	6.42	0.00	16.83	7.06	16.83	0.24
8	beta pinene	7.26	0.00	55.31	21.42	55.31	0.78
9	beta octumene	7.47	0.00	89.97	37.43	89.97	1.27
10	myrcene	7.64	0.00	25.87	10.18	25.87	0.37
11		7.77	0.00	22.82	9.02	22.82	0.32
12		8.28	0.00	5.64	2.31	5.64	0.08
13		8.35	0.00	13.72	5.38	13.72	0.19
14		8.66	0.00	4.92	1.88	4.92	0.07
15	beta phellandrene	8.75	0.00	8.94	3.37	8.94	0.13
16	d-limonene	8.90	0.00	10.87	4.10	10.87	0.15
17	1.8 cineol	8.98	0.00	8.61	3.20	8.61	0.12
18	cis-beta ocimene	9.22	0.00	93.60	35.25	93.60	1.33
19	trans-beta ocimene	9.59	0.00	110.06	41.20	110.06	1.56
20	cis-linalool oxide	10.47	0.00	34.24	11.34	34.24	0.48
21	terpinolene	11.06	0.00	29.57	9.27	29.57	0.42
22	linalool	11.66	0.00	2991.04	482.62	2991.04	42.36
23		11.73	0.00	8.74	2.90	8.74	0.12
24	beta phenylethyl alcohol	11.99	0.00	62.52	22.94	62.52	0.89
25		12.45	0.00	3.35	1.11	3.35	0.05
26	camphor	13.19	0.00	40.07	12.32	40.07	0.57
27		13.41	0.00	4.74	1.52	4.74	0.07
28	borneol	14.07	0.00	138.64	39.56	138.64	1.96
29		14.42	0.00	9.37	2.93	9.37	0.13
30	terpin-4-ol	14.53	0.00	55.81	17.64	55.81	0.79
31		14.72	0.00	9.30	2.53	9.30	0.13
32		14.85	0.00	5.10	1.57	5.10	0.07
33	alpha terpineol	15.07	0.00	51.87	16.12	51.87	0.73
34		15.15	0.00	27.09	9.16	27.09	0.38
35		16.60	0.00	13.38	2.85	13.38	0.19
36		16.96	0.00	4.19	1.32	4.19	0.06
37	linalyl acetate	17.85	0.00	2511.79	461.00	2511.79	35.57
38	bornyl acetate	18.90	0.00	4.48	1.37	4.48	0.06
39	lavandulyl acetate	19.15	0.00	27.83	8.69	27.83	0.39
40		20.72	0.00	4.42	1.33	4.42	0.06

4115

Instrument 6890

C:\HPCHEM\2\DATA\2023\
41150000.D

Lavender Maillette ORG
4115-LZGN
France
Lavandula angustifolia
Sample/Solvent: 0.05g/0.52g
Injection Amount: 0.2uL
20:1 Split Ratio

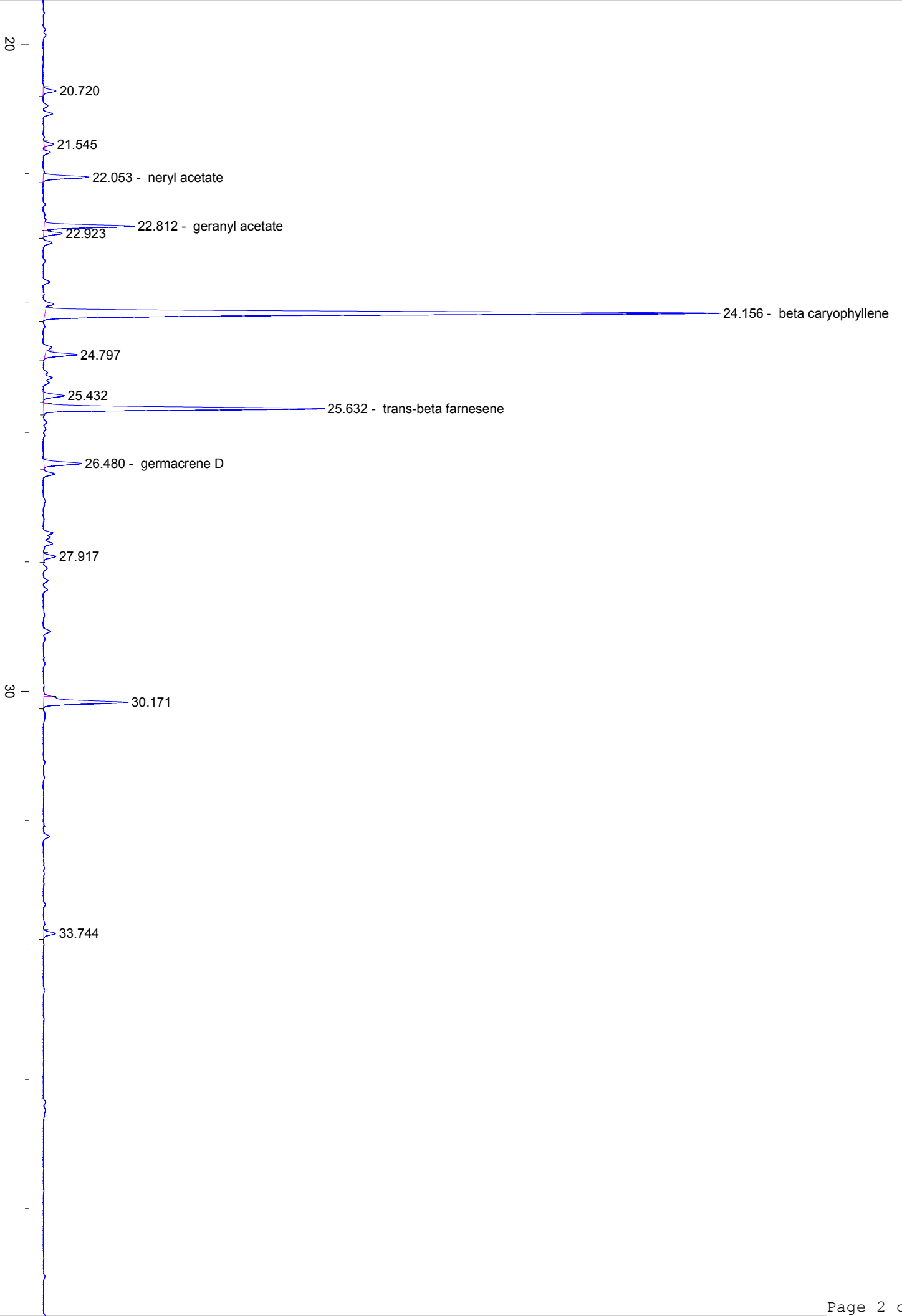
HP-5 5% Phenyl Methyl Siloxane
30.000m
250.000um
0.250um

12/8/2023 11:34:53 AM
12/8/2023 11:34:53 AM

12/14/2023
3:33:00 PM

#	Compound Name	Meas. Ret.	Amount	Response	Height	Area	Area %
41		21.54	0.00	2.75	1.01	2.75	0.04
42	neryl acetate	22.05	0.00	15.59	4.79	15.59	0.22
43	geranyl acetate	22.81	0.00	30.82	9.45	30.82	0.44
44		22.92	0.00	6.10	1.94	6.10	0.09
45	beta caryophyllene	24.16	0.00	284.01	70.71	284.01	4.02
46		24.80	0.00	11.22	3.34	11.22	0.16
47		25.43	0.00	7.49	2.19	7.49	0.11
48	trans-beta farnesene	25.63	0.00	101.05	29.37	101.05	1.43
49	germacrene D	26.48	0.00	13.56	3.94	13.56	0.19
50		27.92	0.00	4.16	1.24	4.16	0.06
51		30.17	0.00	35.15	8.82	35.15	0.50
52		33.74	0.00	4.17	1.21	4.17	0.06





40

50

min