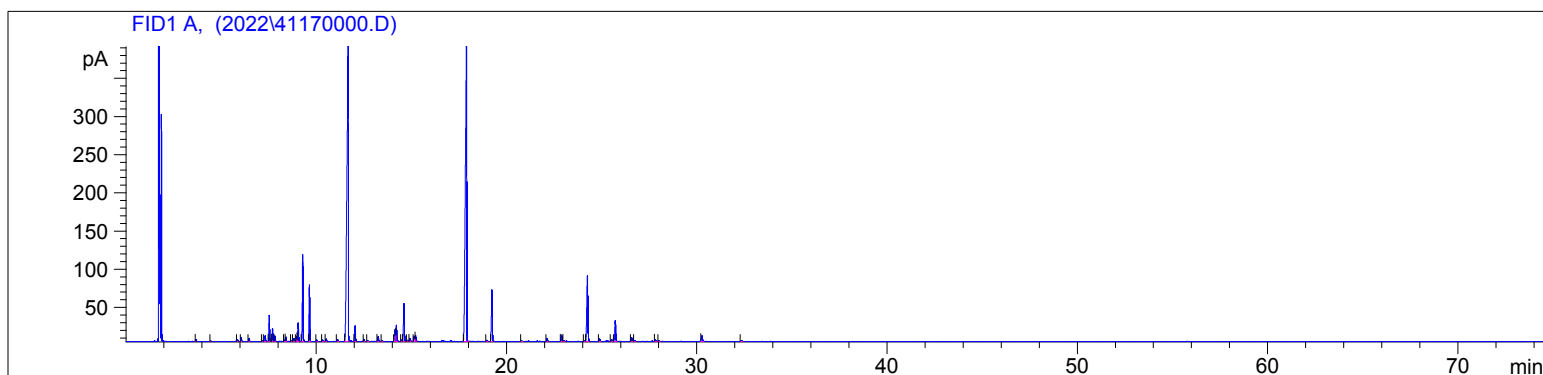


Lavender Wild Organic
4117-LADL
France
Lavandula augustifolia
Injection Amount: 0.2uL
15:1 Split Ratio

HP-5 5% Phenyl Methyl Siloxane
30.000m
250.000um
0.250um

12/21/2022 9:59:36 AM
12/21/2022 9:59:36 AM

12/21/2022
11:28:31 AM



#	Compound Name	Meas. Ret.	Amount	Response	Height	Area	Area %
1		3.67	0.00	4.25	2.58	4.25	0.07
2		4.44	0.00	2.00	0.98	2.00	0.03
3	alpha thujene	5.85	0.00	4.70	2.27	4.70	0.08
4	alpha pinene	6.05	0.00	12.01	5.25	12.01	0.20
5	camphene	6.46	0.00	10.04	4.24	10.04	0.17
6	sabinene	7.17	0.00	2.55	1.12	2.55	0.04
7	beta pinene	7.30	0.00	25.84	7.75	25.84	0.43
8	3-octanone	7.52	0.00	82.24	34.13	82.24	1.37
9	myrcene	7.69	0.00	42.93	16.34	42.93	0.72
10		7.82	0.00	18.48	7.57	18.48	0.31
11		8.34	0.00	4.60	1.91	4.60	0.08
12	alpha terpinene	8.40	0.00	14.95	5.96	14.95	0.25
13	ortho cymene	8.72	0.00	3.85	1.46	3.85	0.06
14	para cymene	8.81	0.00	10.91	4.11	10.91	0.18
15	d-limonene	8.96	0.00	17.37	6.26	17.37	0.29
16	1,8-cineol	9.04	0.00	66.29	24.29	66.29	1.11
17	cis beta ocimene	9.28	0.00	301.65	113.72	301.65	5.04
18	trans beta ocimene	9.65	0.00	195.70	73.80	195.70	3.27
19		10.03	0.00	6.09	2.21	6.09	0.10
20		10.34	0.00	5.77	1.94	5.77	0.10
21	cis-linalool oxide	10.53	0.00	10.06	3.38	10.06	0.17
22	terpinolene	11.12	0.00	9.69	2.99	9.69	0.16
23	linalool	11.69	0.00	2001.48	387.47	2001.48	33.41
24		12.05	0.00	55.82	20.17	55.82	0.93
25		12.52	0.00	7.48	2.68	7.48	0.12
26		12.71	0.00	3.60	1.07	3.60	0.06
27		13.26	0.00	20.87	6.18	20.87	0.35
28		13.47	0.00	4.07	1.32	4.07	0.07
29	borneol	14.14	0.00	48.06	15.36	48.06	0.80
30	lavandulol	14.22	0.00	70.37	21.31	70.37	1.17
31		14.50	0.00	5.96	1.97	5.96	0.10
32	terpin-4-ol	14.62	0.00	160.18	49.72	160.18	2.67
33		14.81	0.00	5.64	1.53	5.64	0.09
34		14.93	0.00	11.94	3.47	11.94	0.20
35		15.15	0.00	19.65	6.19	19.65	0.33
36	alpha terpineol	15.23	0.00	23.20	7.69	23.20	0.39
37	linalyl acetate	17.90	0.00	1896.91	391.39	1896.91	31.67

4117

Instrument 6890

C:\HPCHEM\2\DATA\2022\
41170000.DLavender Wild Organic
4117-LADL
France
Lavandula augustifolia
Injection Amount: 0.2uL
15:1 Split RatioHP-5 5% Phenyl Methyl Siloxane
30.000m
250.000um
0.250um12/21/2022 9:59:36 AM
12/21/2022 9:59:36 AM12/21/2022
11:28:31 AM

#	Compound Name	Meas. Ret.	Amount	Response	Height	Area	Area %
38	bornyl acetate	18.98	0.00	5.88	1.80	5.88	0.10
39	lavandulyl acetate	19.24	0.00	222.09	67.59	222.09	3.71
40		20.80	0.00	3.51	1.01	3.51	0.06
41	neryl acetate	22.14	0.00	14.38	4.28	14.38	0.24
42	geranyl acetate	22.90	0.00	27.74	8.25	27.74	0.46
43		23.01	0.00	4.30	1.32	4.30	0.07
44		24.11	0.00	3.33	1.03	3.33	0.06
45	beta caryophyllene	24.26	0.00	334.77	85.81	334.77	5.59
46		24.89	0.00	11.44	3.41	11.44	0.19
47		25.53	0.00	9.88	2.65	9.88	0.16
48	alpha humulene	25.72	0.00	94.79	27.11	94.79	1.58
49	trans-beta farnesene	26.58	0.00	19.41	5.34	19.41	0.32
50		26.74	0.00	4.89	1.35	4.89	0.08
51	germacrene D	27.82	0.00	8.38	2.36	8.38	0.14
52		28.02	0.00	4.30	1.25	4.30	0.07
53	caryophyllene oxide	30.28	0.00	28.24	7.37	28.24	0.47
54		32.36	0.00	5.54	1.53	5.54	0.09

