

Lavender Wild Org

HP-5 5% Phenyl Methyl Siloxane

4117-LZBA-2

30.000m

France

250.000um

Lavandula Augustifolia

0.250um

Sample/Solvent: 0.05g/0.5g

Injection Amount: 0.2uL

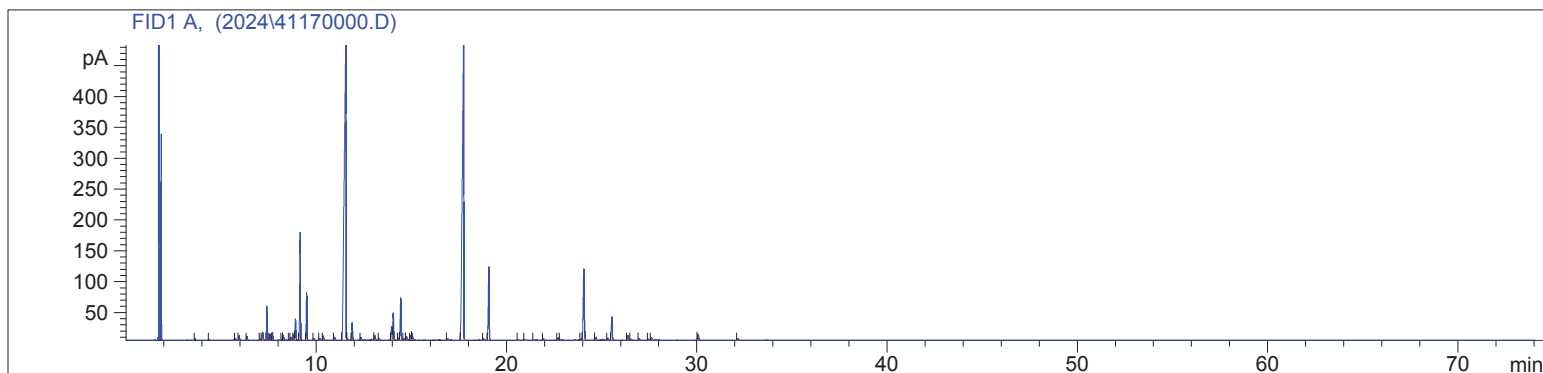
20:1 Split Ratio

12/5/2024 9:23:09 AM

12/5/2024

12/5/2024 9:23:09 AM

12:35:13 PM



#	Compound Name	Meas. Ret.	Amount	Response	Height	Area	Area %
1		4.36	0.00	2.54	1.29	2.54	0.03
2	alpha thujene	5.75	0.00	5.84	2.84	5.84	0.07
3	alpha pinene	5.94	0.00	16.94	7.63	16.94	0.19
4	camphene	6.35	0.00	13.48	5.79	13.48	0.15
5	sabinene	7.05	0.00	3.68	1.61	3.68	0.04
6	beta pinene	7.18	0.00	42.21	12.91	42.21	0.47
7	3-octanone	7.40	0.00	127.81	54.89	127.81	1.44
8	myrcene	7.56	0.00	23.69	9.90	23.69	0.27
9		7.69	0.00	29.82	12.30	29.82	0.34
10		8.20	0.00	4.62	1.96	4.62	0.05
11	alpha terpinene	8.27	0.00	17.64	7.07	17.64	0.20
12	ortho cymene	8.58	0.00	3.53	1.42	3.53	0.04
13	para cymene	8.67	0.00	12.11	4.72	12.11	0.14
14	d-limonene	8.82	0.00	22.61	8.35	22.61	0.25
15	1.8 cineol	8.90	0.00	93.18	33.77	93.18	1.05
16	cis beta ocimene	9.15	0.00	463.78	174.14	463.78	5.22
17	trans beta ocimene	9.50	0.00	199.41	76.52	199.41	2.24
18		9.88	0.00	7.46	2.74	7.46	0.08
19		10.18	0.00	8.26	2.85	8.26	0.09
20	cis linalool oxide	10.38	0.00	19.11	6.53	19.11	0.22
21	terpinolene	10.97	0.00	15.40	4.81	15.40	0.17
22	linalool	11.57	0.00	3262.04	513.05	3262.04	36.70
23		11.64	0.00	7.84	1.73	7.84	0.09
24		11.90	0.00	77.29	27.91	77.29	0.87
25		12.36	0.00	11.48	4.00	11.48	0.13
26		13.09	0.00	23.26	6.83	23.26	0.26
27		13.31	0.00	5.83	1.89	5.83	0.07
28	borneol	13.97	0.00	65.61	21.08	65.61	0.74
29	lavandulol	14.06	0.00	141.39	43.55	141.39	1.59
30		14.33	0.00	10.59	3.45	10.59	0.12
31	terpin-4-ol	14.45	0.00	218.30	67.97	218.30	2.46
32		14.62	0.00	6.34	1.77	6.34	0.07
33		14.75	0.00	18.08	5.80	18.08	0.20
34		14.97	0.00	22.25	7.23	22.25	0.25
35	alpha terpineol	15.05	0.00	27.28	9.58	27.28	0.31
36		16.91	0.00	10.05	2.16	10.05	0.11
37	linalyl acetate	17.75	0.00	2658.41	483.15	2658.41	29.91
38	bornyl acetate	18.80	0.00	7.30	2.26	7.30	0.08
39	lavandulyl acetate	19.08	0.00	402.65	118.39	402.65	4.53
40		20.62	0.00	4.32	1.24	4.32	0.05

4117 LZBA-2

Instrument 6890

C:\HPCHEM\2\DATA\2024\
41170000.D

Lavender Wild Org
4117-LZBA-2
France
Lavandula Augustifolia
Sample/Solvent: 0.05g/0.5g
Injection Amount: 0.2uL
20:1 Split Ratio

HP-5 5% Phenyl Methyl Siloxane
30.000m
250.000um
0.250um

12/5/2024 9:23:09 AM
12/5/2024 9:23:09 AM

12/5/2024
12:35:13 PM

#	Compound Name	Meas. Ret.	Amount	Response	Height	Area	Area %
41		20.97	0.00	3.98	1.21	3.98	0.04
42		21.45	0.00	3.72	1.26	3.72	0.04
43	neryl acetate	21.96	0.00	6.77	2.11	6.77	0.08
44	geranyl acetate	22.72	0.00	12.56	3.91	12.56	0.14
45		22.83	0.00	4.73	1.52	4.73	0.05
46		23.92	0.00	4.99	1.58	4.99	0.06
47	beta caryophyllene	24.07	0.00	469.14	114.86	469.14	5.28
48		24.70	0.00	17.25	5.00	17.25	0.19
49		25.34	0.00	11.89	3.35	11.89	0.13
50		25.54	0.00	131.71	37.96	131.71	1.48
51		26.39	0.00	27.70	7.89	27.70	0.31
52		26.55	0.00	6.56	1.85	6.56	0.07
53		26.98	0.00	9.16	2.34	9.16	0.10
54		27.46	0.00	5.70	1.55	5.70	0.06
55		27.62	0.00	13.33	3.78	13.33	0.15
56		30.08	0.00	33.56	9.07	33.56	0.38
57		32.16	0.00	8.25	2.34	8.25	0.09

