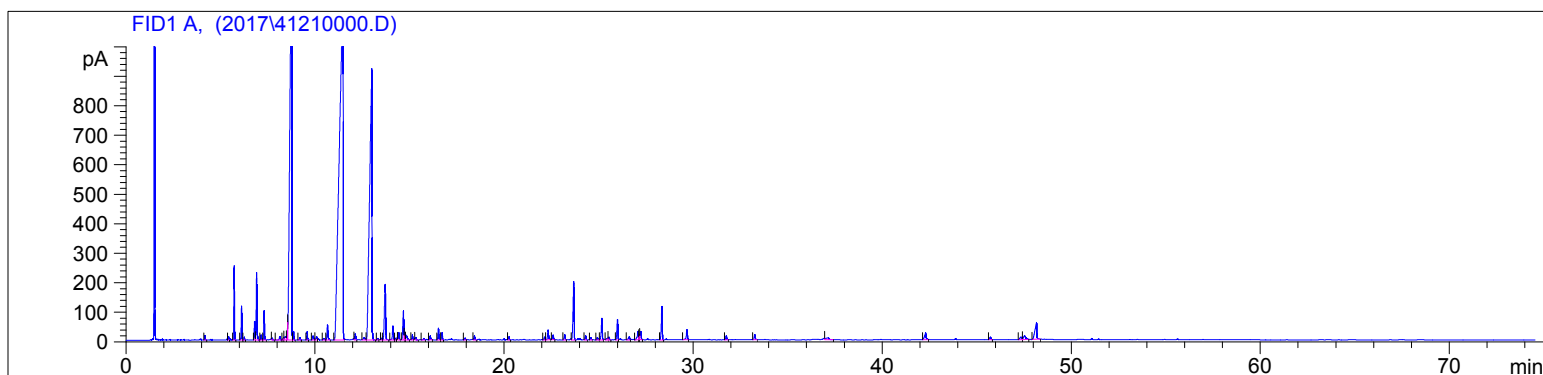


Lavender Spike (Organic)
4121-BBZIU
Spain
lavandula latifolia
Sample/CH2CL2: 0.11g/0.25g
Injection: 0.2uL

HP-5 5% Phenyl Methyl Siloxane
30.000m
250.000um
0.250um

2/14/2017 2:34:56 PM
2/14/2017 2:34:56 PM

2/23/2017
3:22:35 PM



#	Compound Name	Meas. Ret.	Amount	Response	Height	Area	Area %
1		4.17	0.00	36.89	15.21	36.89	0.09
2		5.42	0.00	30.01	12.25	30.01	0.07
3	alpha thujene	0.00	0.00	0.00	0.00	0.00	0.00
4	alpha pinene	5.72	100.00	594.27	251.81	594.27	1.38
5	camphene	6.11	100.00	287.07	115.39	287.07	0.66
6		6.25	0.00	25.21	10.35	25.21	0.06
7	sabinene	6.80	100.00	171.43	63.56	171.43	0.40
8	beta pinene	6.90	100.00	633.07	229.59	633.07	1.47
9	3-octanone	7.14	100.00	49.26	17.14	49.26	0.11
10	myrcene	7.30	100.00	265.90	99.54	265.90	0.62
11		7.73	0.00	22.97	6.25	22.97	0.05
12		8.13	0.00	49.92	12.56	49.92	0.12
13		8.32	0.00	28.70	8.28	28.70	0.07
14	beta phellandrene	8.43	100.00	77.03	11.32	77.03	0.18
15	d-limonene	8.56	100.00	132.36	62.00	132.36	0.31
16	1.8 cineol	8.77	100.00	10760.16	1590.00	10760.16	24.92
17	cis beta ocimene	8.86	100.00	70.31	29.04	70.31	0.16
18	trans beta ocimene	9.20	100.00	23.27	8.49	23.27	0.05
19	gamma terpinene	9.58	0.00	73.40	27.87	73.40	0.17
20		9.89	0.00	67.08	14.52	67.08	0.16
21	cis-linalool oxide	10.08	100.00	54.22	11.71	54.22	0.13
22		10.45	0.00	22.14	5.43	22.14	0.05
23	terpinolene	10.65	100.00	179.03	50.87	179.03	0.41
24	linalool	11.47	100.00	16024.37	1210.27	16024.37	37.11
25	beta phenylethyl alcohol	0.00	0.00	0.00	0.00	0.00	0.00
26		12.12	0.00	80.41	20.80	80.41	0.19
27		12.59	0.00	52.09	8.63	52.09	0.12
28	camphor	12.99	100.00	7706.09	918.19	7706.09	17.85
29		13.32	0.00	18.96	5.82	18.96	0.04
30		13.51	0.00	19.26	6.45	19.26	0.04
31	lavandulol	13.71	100.00	860.40	187.91	860.40	1.99
32	terpin-4-ol	14.12	100.00	165.20	48.12	165.20	0.38
33		14.27	0.00	20.53	6.61	20.53	0.05
34		14.42	0.00	84.77	25.20	84.77	0.20
35	alpha terpineol	14.67	100.00	348.08	97.90	348.08	0.81
36		14.73	0.00	65.78	24.59	65.78	0.15
37		14.82	0.00	78.30	15.69	78.30	0.18

4121-BBZIU

Instrument 6890

C:\HPCHEM\2\DATA\2017\
41210000.DLavender Spike (Organic)
4121-BBZIU
Spain
lavandula latifolia
Sample/CH2CL2: 0.11g/0.25g
Injection: 0.2uLHP-5 5% Phenyl Methyl Siloxane
30.000m
250.000um
0.250um2/14/2017 2:34:56 PM
2/14/2017 2:34:56 PM2/23/2017
3:22:35 PM

#	Compound Name	Meas.	Ret.	Amount	Response	Height	Area	Area %
38			15.14	0.00	54.01	16.69	54.01	0.13
39			15.33	0.00	27.05	7.30	27.05	0.06
40			15.75	0.00	19.14	5.06	19.14	0.04
41			16.08	0.00	48.06	13.61	48.06	0.11
42	nerol		16.52	100.00	133.74	40.49	133.74	0.31
43			16.71	0.00	79.12	25.15	79.12	0.18
44	linalyl acetate		17.92	100.00	24.35	6.51	24.35	0.06
45	bornyl acetate		18.42	100.00	49.10	14.10	49.10	0.11
46	lavandulyl acetate		0.00	0.00	0.00	0.00	0.00	0.00
47			20.25	0.00	35.16	10.84	35.16	0.08
48			22.13	0.00	32.58	9.39	32.58	0.08
49			22.32	0.00	133.53	33.41	133.53	0.31
50	geranyl acetate		22.58	100.00	57.08	16.30	57.08	0.13
51			23.20	0.00	63.13	17.39	63.13	0.15
52	beta caryophyllene		23.68	100.00	773.88	197.54	773.88	1.79
53			24.30	0.00	50.72	14.38	50.72	0.12
54			24.58	0.00	24.82	7.16	24.82	0.06
55			24.92	0.00	27.59	7.90	27.59	0.06
56	alpha humulene		25.16	100.00	256.67	73.09	256.67	0.59
57			25.48	0.00	35.40	6.58	35.40	0.08
58			25.54	0.00	31.37	8.84	31.37	0.07
59	trans-beta farnesene		25.99	100.00	253.22	69.15	253.22	0.59
60			26.61	0.00	52.72	10.69	52.72	0.12
61			27.08	0.00	127.31	28.10	127.31	0.29
62			27.16	0.00	48.10	16.35	48.10	0.11
63	germacrene D		27.22	100.00	98.20	27.92	98.20	0.23
64			28.34	0.00	402.43	113.50	402.43	0.93
65			29.67	0.00	145.67	34.11	145.67	0.34
66			31.74	0.00	50.51	13.59	50.51	0.12
67			33.25	0.00	62.40	17.06	62.40	0.14
68			37.12	0.00	69.91	5.93	69.91	0.16
69			42.29	0.00	130.89	22.24	130.89	0.30
70			45.72	0.00	40.11	9.32	40.11	0.09
71			47.33	0.00	56.92	8.61	56.92	0.13
72			47.51	0.00	110.02	12.30	110.02	0.25
73			48.16	0.00	399.12	56.84	399.12	0.92

