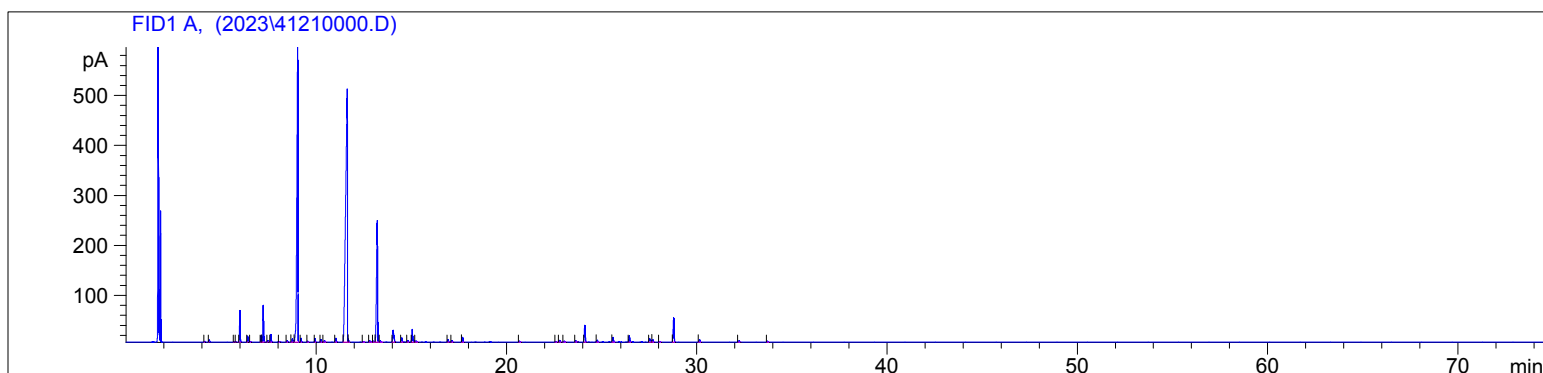


Lavender Spike Organic
EO4121-FZAN
Spain
Lavandula latifolia
Sample/Solvent: 0.07g/0.53g
Injection Amount: 0.2uL
20:1 Split Ratio

HP-5 5% Phenyl Methyl Siloxane
30.000m
250.000um
0.250um

6/8/2023 1:17:46 PM
6/8/2023 1:17:46 PM

6/9/2023
1:56:08 PM



#	Compound Name	Meas. Ret.	Amount	Response	Height	Area	Area %
1		4.14	0.00	3.33	1.75	3.33	0.04
2		4.37	0.00	8.29	4.34	8.29	0.11
3		5.67	0.00	2.13	0.99	2.13	0.03
4	alpha thujene	5.78	0.00	1.35	0.69	1.35	0.02
5	alpha pinene	5.98	0.00	144.45	63.54	144.45	1.83
6	camphene	6.39	0.00	28.80	12.35	28.80	0.37
7		6.54	0.00	3.59	1.56	3.59	0.05
8	sabinene	7.10	0.00	33.18	13.59	33.18	0.42
9	beta pinene	7.21	0.00	190.84	73.96	190.84	2.42
10	3-octanone	7.45	0.00	6.71	2.80	6.71	0.09
11	myrcene	7.61	0.00	37.83	15.29	37.83	0.48
12	alpha phellandrene	8.06	0.00	3.03	1.16	3.03	0.04
13	alpha terpinene	8.47	0.00	8.28	3.08	8.28	0.10
14	para cymene	8.73	0.00	20.34	6.62	20.34	0.26
15	1,8-cineol	9.02	0.00	2281.28	596.56	2281.28	28.92
16	cis-beta ocimene	9.19	0.00	19.21	7.49	19.21	0.24
17	trans-beta ocimene	9.56	0.00	4.95	1.84	4.95	0.06
18	gamma terpinene	9.94	0.00	20.50	7.45	20.50	0.26
19	cis-sabinene hydrate	10.25	0.00	15.29	5.17	15.29	0.19
20	cis-linalool oxide	10.44	0.00	13.21	3.27	13.21	0.17
21	trans-linalool oxide	11.04	0.00	25.16	7.75	25.16	0.32
22	linalool	11.64	0.00	3237.55	505.28	3237.55	41.05
23		11.71	0.00	8.41	2.75	8.41	0.11
24		12.48	0.00	4.72	1.54	4.72	0.06
25		12.82	0.00	13.70	2.77	13.70	0.17
26		13.01	0.00	10.15	2.18	10.15	0.13
27	camphor	13.21	0.00	922.42	242.30	922.42	11.69
28		13.38	0.00	9.77	2.77	9.77	0.12
29	borneol	14.05	0.00	103.39	23.51	103.39	1.31
30	terpinen-4-ol	14.51	0.00	26.65	8.43	26.65	0.34
31	cis-pinocarveol	14.83	0.00	10.21	3.28	10.21	0.13
32	alpha terpineol	15.05	0.00	90.74	25.63	90.74	1.15
33		15.23	0.00	12.26	2.34	12.26	0.16
34	pulegone	16.94	0.00	18.13	5.21	18.13	0.23
35	carvone	17.13	0.00	11.33	3.57	11.33	0.14
36	geraniol	17.70	0.00	32.98	9.88	32.98	0.42
37		20.70	0.00	6.31	1.96	6.31	0.08
38		22.60	0.00	4.59	1.27	4.59	0.06
39		22.79	0.00	13.11	3.52	13.11	0.17
40		23.04	0.00	8.48	2.22	8.48	0.11

4121

Instrument 6890

C:\HPCHEM\2\DATA\2023\
41210000.D

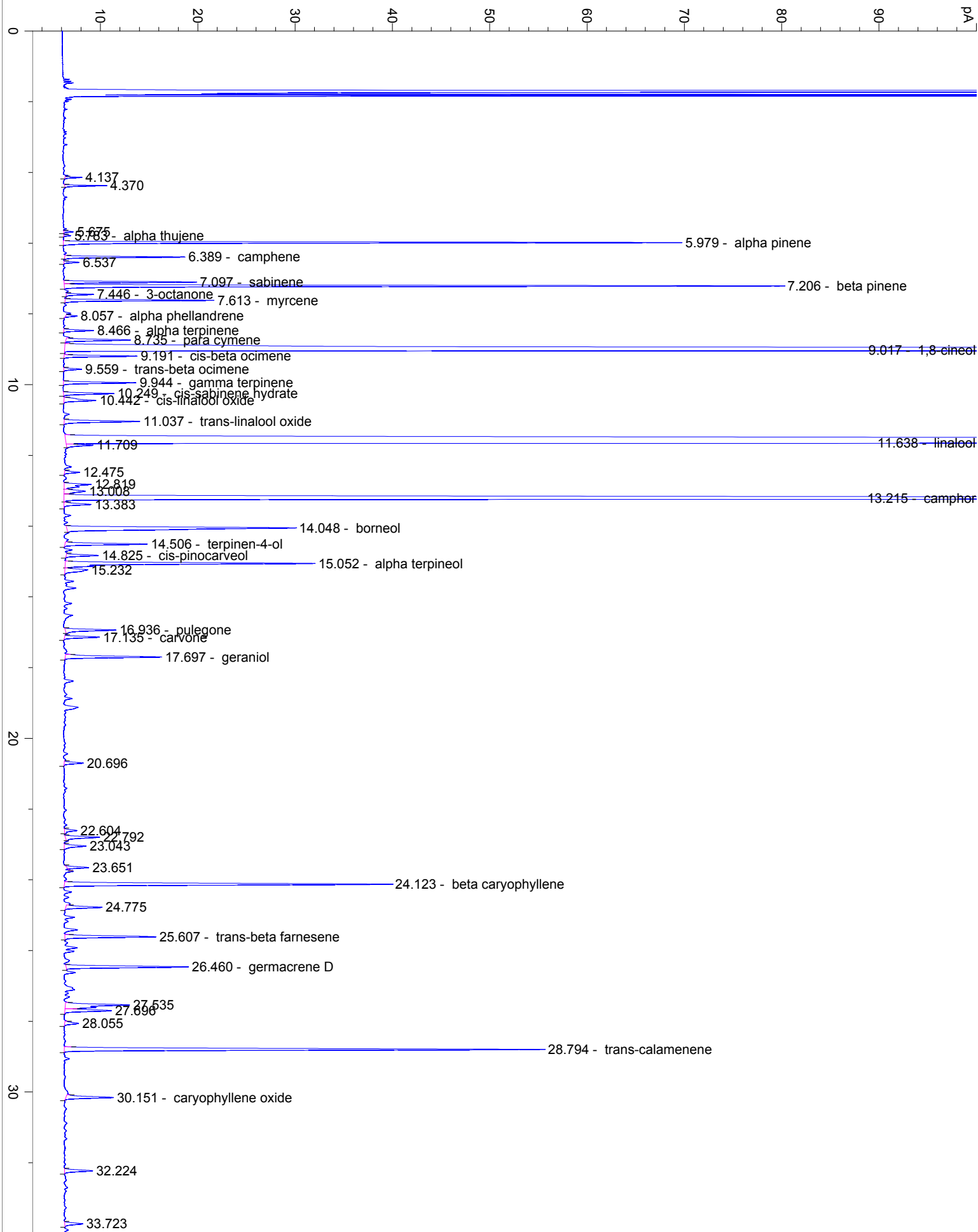
Lavender Spike Organic
EO4121-FZAN
Spain
Lavandula latifolia
Sample/Solvent: 0.07g/0.53g
Injection Amount: 0.2uL
20:1 Split Ratio

HP-5 5% Phenyl Methyl Siloxane
30.000m
250.000um
0.250um

6/8/2023 1:17:46 PM
6/8/2023 1:17:46 PM

6/9/2023
1:56:08 PM

#	Compound Name	Meas. Ret.	Amount	Response	Height	Area	Area %
41		23.65	0.00	6.53	2.25	6.53	0.08
42	beta caryophyllene	24.12	0.00	117.55	33.61	117.55	1.49
43		24.77	0.00	13.03	3.73	13.03	0.17
44	trans-beta farnesene	25.61	0.00	32.19	9.32	32.19	0.41
45	germacrene D	26.46	0.00	42.88	12.55	42.88	0.54
46		27.54	0.00	32.93	6.60	32.93	0.42
47		27.70	0.00	18.27	4.79	18.27	0.23
48		28.06	0.00	5.41	1.43	5.41	0.07
49	trans-calamenene	28.79	0.00	167.28	49.33	167.28	2.12
50	caryophyllene oxide	30.15	0.00	17.55	4.88	17.55	0.22
51		32.22	0.00	10.44	2.88	10.44	0.13
52		33.72	0.00	6.70	1.84	6.70	0.08



40

50

60

70

min