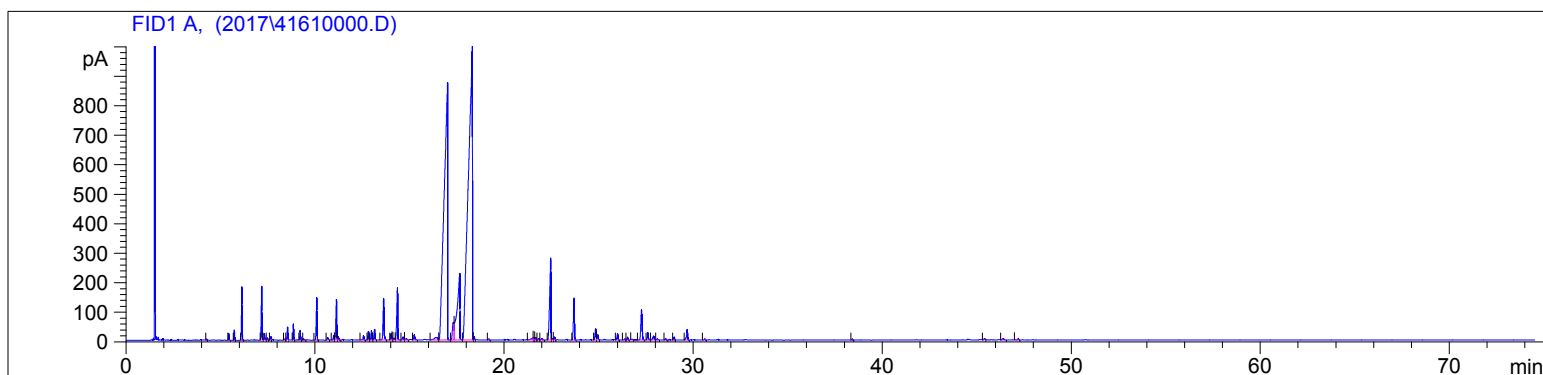


Lemongrass (Organic)  
4161-CCZHU  
India  
cymbopogon flexuosus  
Sample/CH2CL2: 0.11g/0.38g  
Injection: 0.2uL

HP-5 5% Phenyl Methyl Siloxane  
30.000m  
250.000um  
0.250um

3/8/2017 11:08:31 AM  
3/8/2017 11:08:31 AM

3/8/2017  
4:22:41 PM



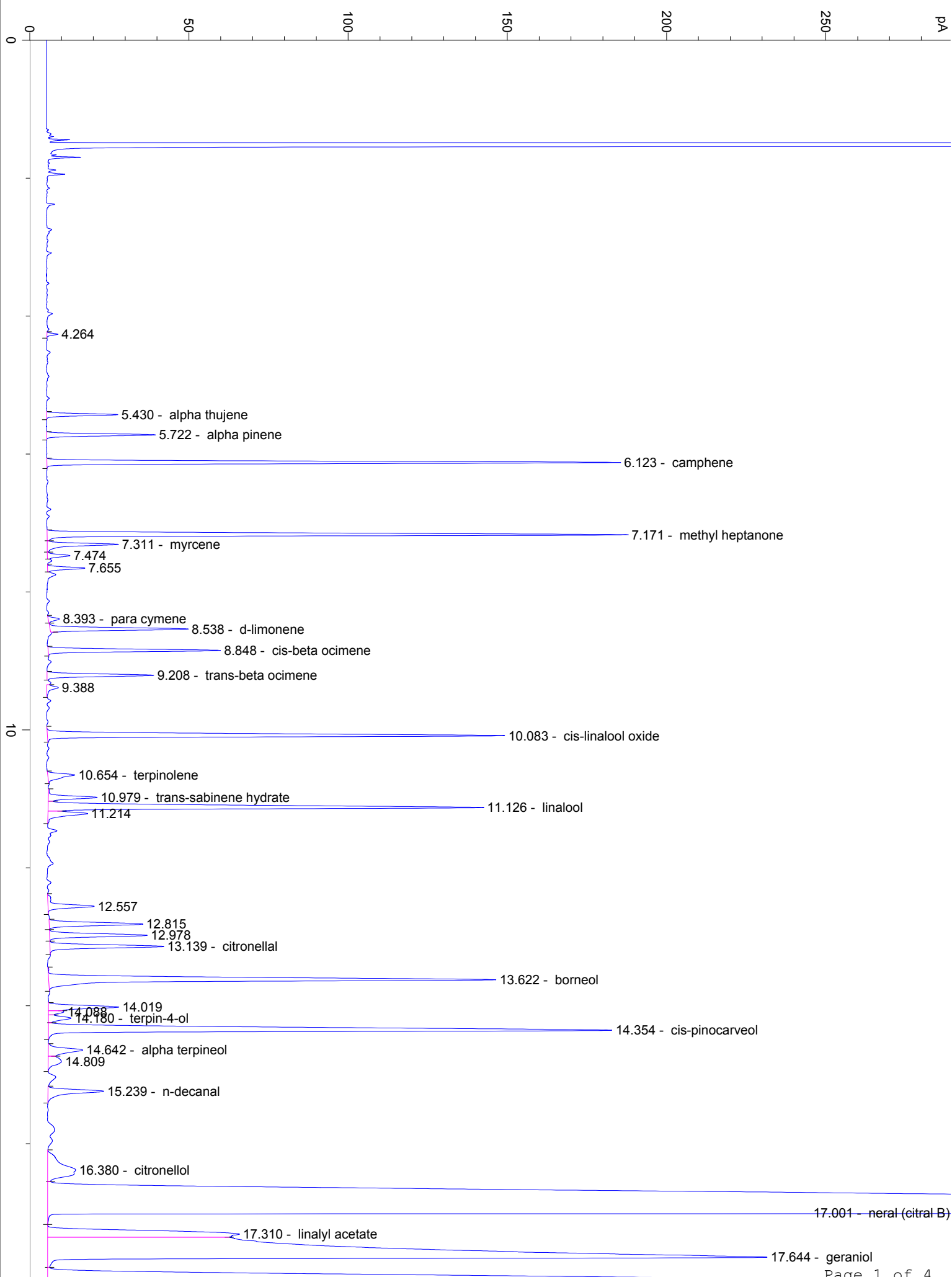
#	Compound Name	Meas. Ret.	Amount	Response	Height	Area	Area %
1		4.26	0.00	6.43	3.48	6.43	0.02
2	alpha thujene	5.43	99.95	49.17	22.34	49.17	0.14
3	alpha pinene	5.72	99.94	76.49	34.13	76.49	0.21
4	camphene	6.12	0.00	421.83	180.16	421.83	1.17
5	methyl heptanone	7.17	99.99	468.81	182.41	468.81	1.30
6	myrcene	7.31	99.95	63.43	22.39	63.43	0.18
7		7.47	0.00	19.03	7.10	19.03	0.05
8		7.66	0.00	30.10	11.73	30.10	0.08
9	para cymene	8.39	0.00	10.48	3.52	10.48	0.03
10	d-limonene	8.54	94.49	116.10	43.36	116.10	0.32
11	1.8 cineol	0.00	0.00	0.00	0.00	0.00	0.00
12	cis-beta ocimene	8.85	0.00	137.94	54.13	137.94	0.38
13	trans-beta ocimene	9.21	99.92	88.96	33.57	88.96	0.25
14		9.39	0.00	13.21	3.60	13.21	0.04
15	cis-linalool oxide	10.08	99.28	418.95	143.65	418.95	1.16
16	terpinolene	10.65	85.24	34.55	8.50	34.55	0.10
17	trans-sabinene hydrate	10.98	0.00	46.66	15.34	46.66	0.13
18	linalool	11.13	99.21	441.85	136.72	441.85	1.22
19		11.21	0.00	47.21	12.44	47.21	0.13
20		12.56	0.00	52.34	14.51	52.34	0.14
21		12.82	0.00	94.02	29.32	94.02	0.26
22		12.98	0.00	96.40	30.65	96.40	0.27
23	citronellal	13.14	0.00	113.10	35.69	113.10	0.31
24	borneol	13.62	98.45	506.32	140.48	506.32	1.40
25		14.02	0.00	73.82	22.11	73.82	0.20
26		14.09	0.00	13.35	4.86	13.35	0.04
27	terpin-4-ol	14.18	98.83	27.23	7.11	27.23	0.08
28	cis-pinocarveol	14.35	99.79	651.10	176.96	651.10	1.80
29	alpha terpineol	14.64	97.93	53.30	10.82	53.30	0.15
30		14.81	0.00	29.80	4.18	29.80	0.08
31	n-decanal	15.24	0.00	72.82	17.57	72.82	0.20
32	nerol	0.00	0.00	0.00	0.00	0.00	0.00
33	citronellol	16.38	295.44	118.77	8.82	118.77	0.33
34	neral (citral B)	17.00	100.00	11163.25	870.78	11163.25	30.90
35	linalyl acetate	17.31	99.97	348.29	60.18	348.29	0.96
36	geraniol	17.64	99.99	2237.66	225.99	2237.66	6.19
37	geranial (citral A)	18.31	139.32	14541.08	1003.41	14541.08	40.25

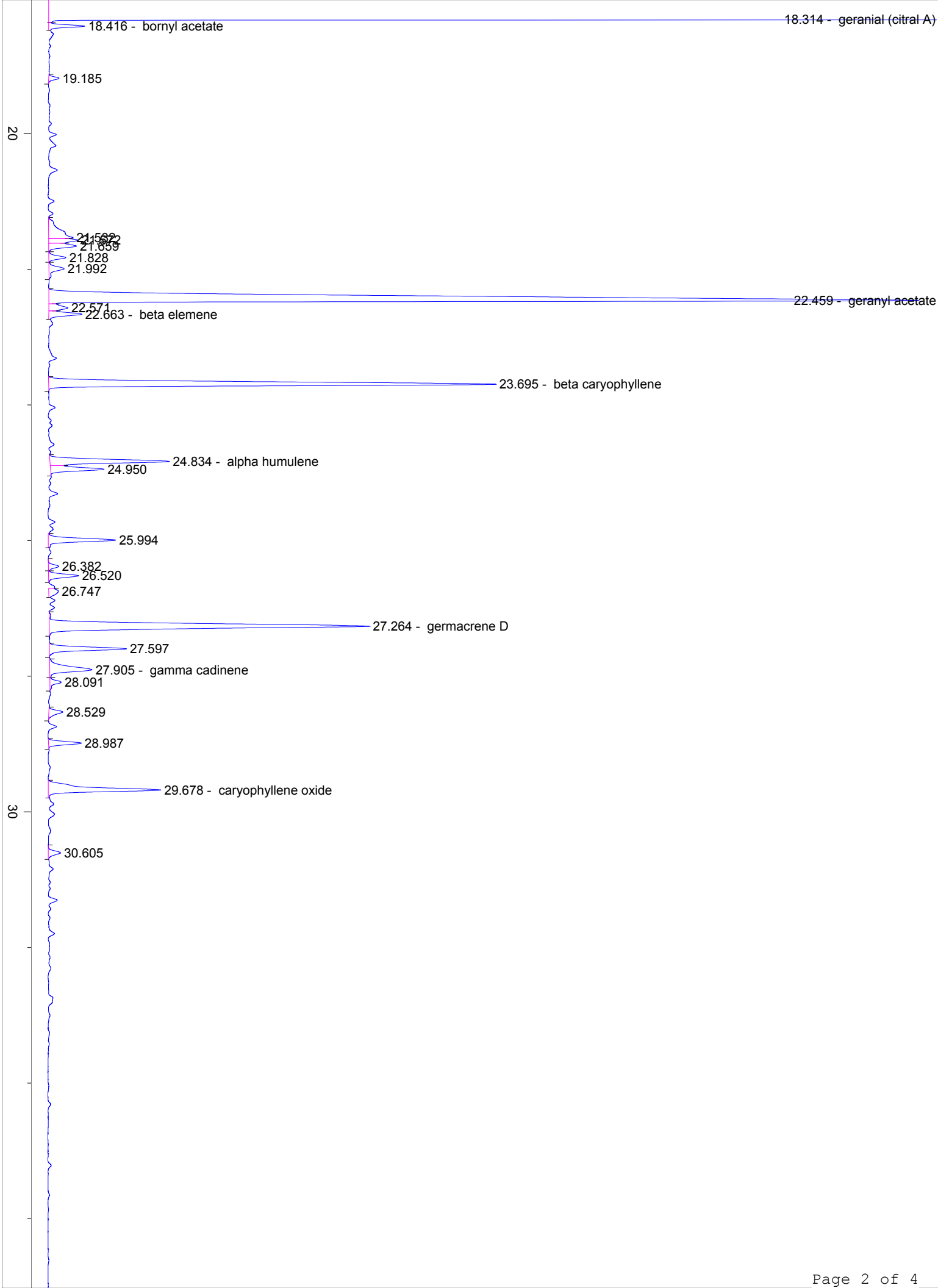
4161-CCZHU

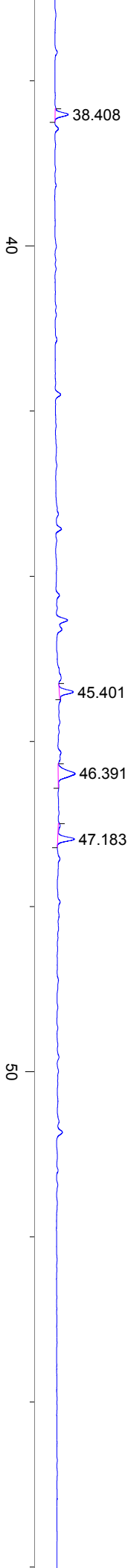
Instrument 6890

C:\HPCHEM\2\DATA\2017\  
41610000.DLemongrass (Organic)  
4161-CCZHU  
India  
cymbopogon flexuosus  
Sample/CH2CL2: 0.11g/0.38g  
Injection: 0.2uLHP-5 5% Phenyl Methyl Siloxane  
30.000m  
250.000um  
0.250um3/8/2017 11:08:31 AM  
3/8/2017 11:08:31 AM3/8/2017  
4:22:41 PM

#	Compound Name	Meas. Ret.	Amount	Response	Height	Area	Area %
38	bornyl acetate	18.42	99.95	31.41	11.49	31.41	0.09
39		19.18	0.00	10.15	3.25	10.15	0.03
40		21.53	0.00	62.57	7.76	62.57	0.17
41		21.57	0.00	31.87	9.40	31.87	0.09
42		21.66	0.00	34.05	8.85	34.05	0.09
43		21.83	0.00	19.78	5.42	19.78	0.05
44		21.99	0.00	23.79	4.84	23.79	0.07
45	geranyl acetate	22.46	99.94	1325.52	277.70	1325.52	3.67
46		22.57	0.00	26.06	6.07	26.06	0.07
47	beta elemene	22.66	141.87	37.38	10.52	37.38	0.10
48	beta caryophyllene	23.70	99.97	544.42	142.77	544.42	1.51
49	alpha humulene	24.83	96.56	145.81	38.12	145.81	0.40
50		24.95	0.00	61.97	17.05	61.97	0.17
51		25.99	0.00	78.56	21.48	78.56	0.22
52		26.38	0.00	11.89	3.27	11.89	0.03
53		26.52	0.00	34.86	9.61	34.86	0.10
54		26.75	0.00	17.19	3.07	17.19	0.05
55	germacrene D	27.26	0.00	472.70	102.17	472.70	1.31
56		27.60	0.00	87.39	24.52	87.39	0.24
57	gamma cadinene	27.91	338.18	73.66	13.49	73.66	0.20
58		28.09	0.00	15.08	3.59	15.08	0.04
59		28.53	0.00	19.08	4.42	19.08	0.05
60		28.99	0.00	34.77	10.43	34.77	0.10
61	caryophyllene oxide	29.68	0.00	154.03	35.92	154.03	0.43
62		30.61	0.00	16.47	3.90	16.47	0.05
63		38.41	0.00	12.47	3.46	12.47	0.03
64		45.40	0.00	13.95	3.65	13.95	0.04
65		46.39	0.00	25.70	4.43	25.70	0.07
66		47.18	0.00	18.59	4.43	18.59	0.05







60

70

min