

Lemongrass Org

HP-5 5% Phenyl Methyl Siloxane

4161 KAEA

30.000m

India

250.000um

Cymbopogon Citratus

0.250um

Sample/Solvent: 0.06g/0.51g

Injection Amount: 0.2uL

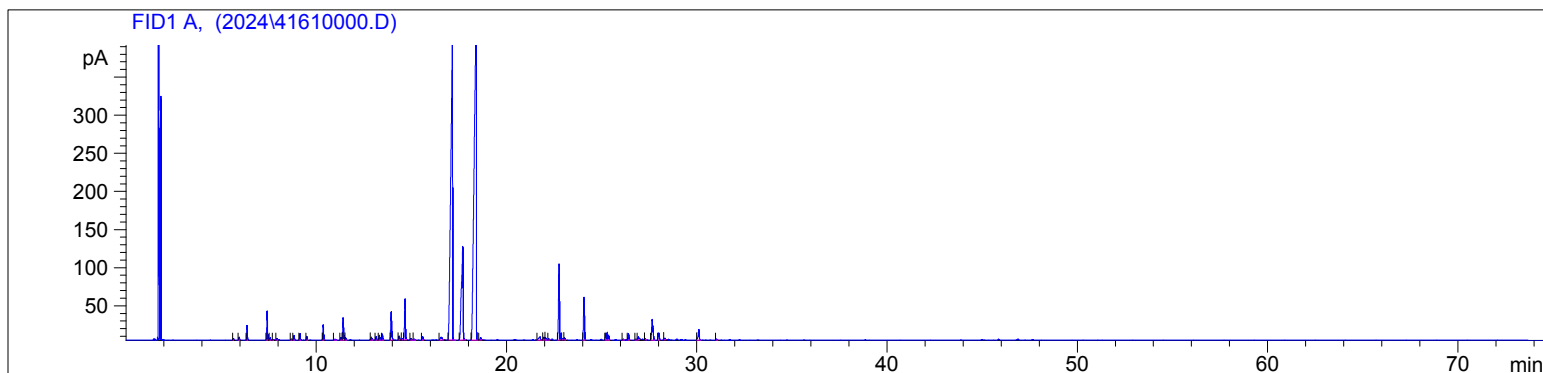
20:1 Split Ratio

11/21/2024 10:38:02 AM

11/21/2024

11/21/2024 10:38:02 AM

12:08:08 PM



#	Compound Name	Meas. Ret.	Amount	Response	Height	Area	Area %
1	Alpha Thujene	5.65	0.00	5.13	2.37	5.13	0.06
2	Alpha Pinene	5.95	0.00	8.41	3.82	8.41	0.10
3	Camphene	6.35	0.00	44.69	19.48	44.69	0.52
4	Methyl Heptenone	7.41	0.00	93.14	38.21	93.14	1.08
5	Myrcene	7.57	0.00	7.69	2.98	7.69	0.09
6		7.74	0.00	2.59	1.02	2.59	0.03
7	N-Octanol	7.93	0.00	4.91	2.05	4.91	0.06
8		8.69	0.00	4.19	1.51	4.19	0.05
9	D-Limonene	8.83	0.00	16.06	5.84	16.06	0.19
10	Cis-Beta Ocimene	9.14	0.00	21.99	8.46	21.99	0.26
11	Trans-Beta Ocimene	9.51	0.00	13.09	4.95	13.09	0.15
12	Cis-Linalool Oxide	10.37	0.00	56.08	20.25	56.08	0.65
13		10.99	0.00	6.14	1.31	6.14	0.07
14	Trans-Sabinene Hydrate	11.30	0.00	10.26	3.48	10.26	0.12
15	Linalool	11.42	0.00	90.00	29.39	90.00	1.05
16		11.55	0.00	9.69	2.85	9.69	0.11
17	Camphor	12.91	0.00	12.39	3.55	12.39	0.14
18	Isopulegol	13.15	0.00	13.95	4.46	13.95	0.16
19	Myrcenone	13.33	0.00	19.30	6.19	19.30	0.22
20	Citronellal	13.48	0.00	23.12	7.68	23.12	0.27
21	Borneol	13.95	0.00	127.69	36.73	127.69	1.48
22		14.37	0.00	15.46	4.91	15.46	0.18
23		14.53	0.00	3.27	1.33	3.27	0.04
24	Terpinen-4-ol	14.68	0.00	170.12	53.54	170.12	1.98
25		14.99	0.00	6.45	1.85	6.45	0.08
26	Alpha Terpineol	15.13	0.00	6.13	1.17	6.13	0.07
27	N-Decanal	15.60	0.00	15.85	4.49	15.85	0.18
28	Citronellol	16.56	0.00	24.24	3.61	24.24	0.28
29	Neral (Citral B)	17.17	0.00	2618.16	391.83	2618.16	30.43
30	Geraniol	17.71	0.00	775.91	122.55	775.91	9.02
31	Geraniol (Citral A)	18.42	0.00	3407.29	442.08	3407.29	39.60
32		18.65	0.00	10.22	2.60	10.22	0.12
33		21.77	0.00	27.41	4.02	27.41	0.32
34		21.97	0.00	13.66	3.70	13.66	0.16
35		22.06	0.00	10.03	2.91	10.03	0.12
36		22.23	0.00	4.34	1.32	4.34	0.05
37	Geranyl Acetate	22.78	0.00	341.00	99.53	341.00	3.96
38		22.97	0.00	7.10	1.93	7.10	0.08
39		23.05	0.00	9.03	2.80	9.03	0.10
40	Beta Caryophyllene	24.09	0.00	199.63	56.18	199.63	2.32

4161-KAEA

Instrument 6890

C:\HPCHEM\2\DATA\2024\
41610000.D

Lemongrass Org

HP-5 5% Phenyl Methyl Siloxane

4161 KAEA

30.000m

India

250.000um

Cymbopogon Citratus

0.250um

Sample/Solvent: 0.06g/0.51g

Injection Amount: 0.2uL

20:1 Split Ratio

11/21/2024 10:38:02 AM

11/21/2024

11/21/2024 10:38:02 AM

12:08:08 PM

#	Compound Name	Meas. Ret.	Amount	Response	Height	Area	Area %
41	Alpha Humulene	25.23	0.00	33.81	8.91	33.81	0.39
42		25.37	0.00	23.24	6.41	23.24	0.27
43		26.14	0.00	2.65	0.99	2.65	0.03
44		26.41	0.00	29.59	8.34	29.59	0.34
45		26.81	0.00	3.76	1.11	3.76	0.04
46	Germacrene D	26.94	0.00	16.19	4.04	16.19	0.19
47		27.31	0.00	3.44	1.23	3.44	0.04
48	Germacrene A	27.66	0.00	131.42	27.16	131.42	1.53
49		28.02	0.00	34.07	9.23	34.07	0.40
50		28.32	0.00	9.48	2.09	9.48	0.11
51	Caryophyllene Oxide	30.11	0.00	56.17	13.75	56.17	0.65
52		31.05	0.00	4.82	1.29	4.82	0.06

