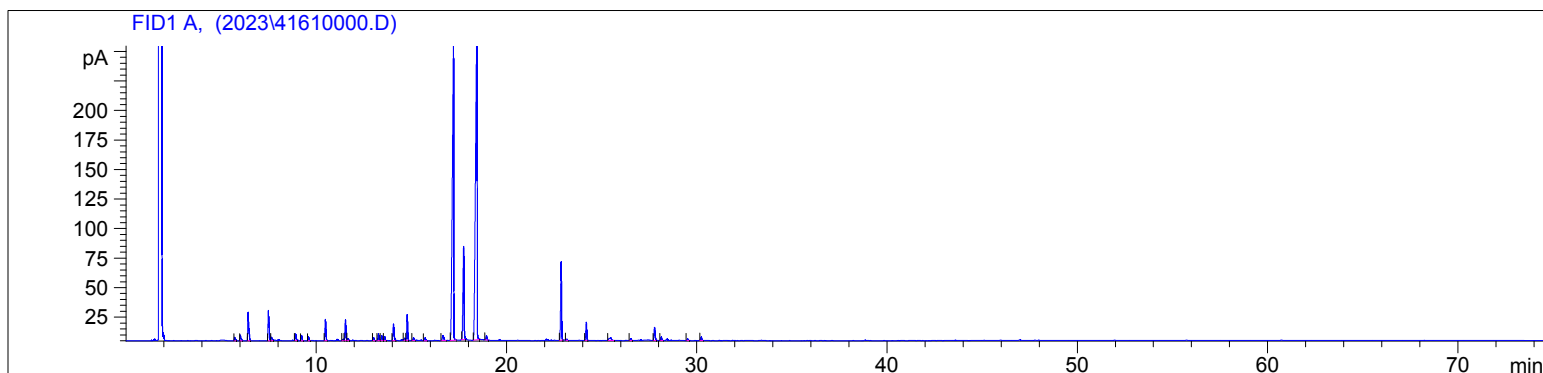


Lemongrass Organic
4161-LBAL
India
Cymbopogon flexuosus
Sample/Solvent: 0.07g/0.50g
Injection Amount: 0.2uL
15:1 Split Ratio

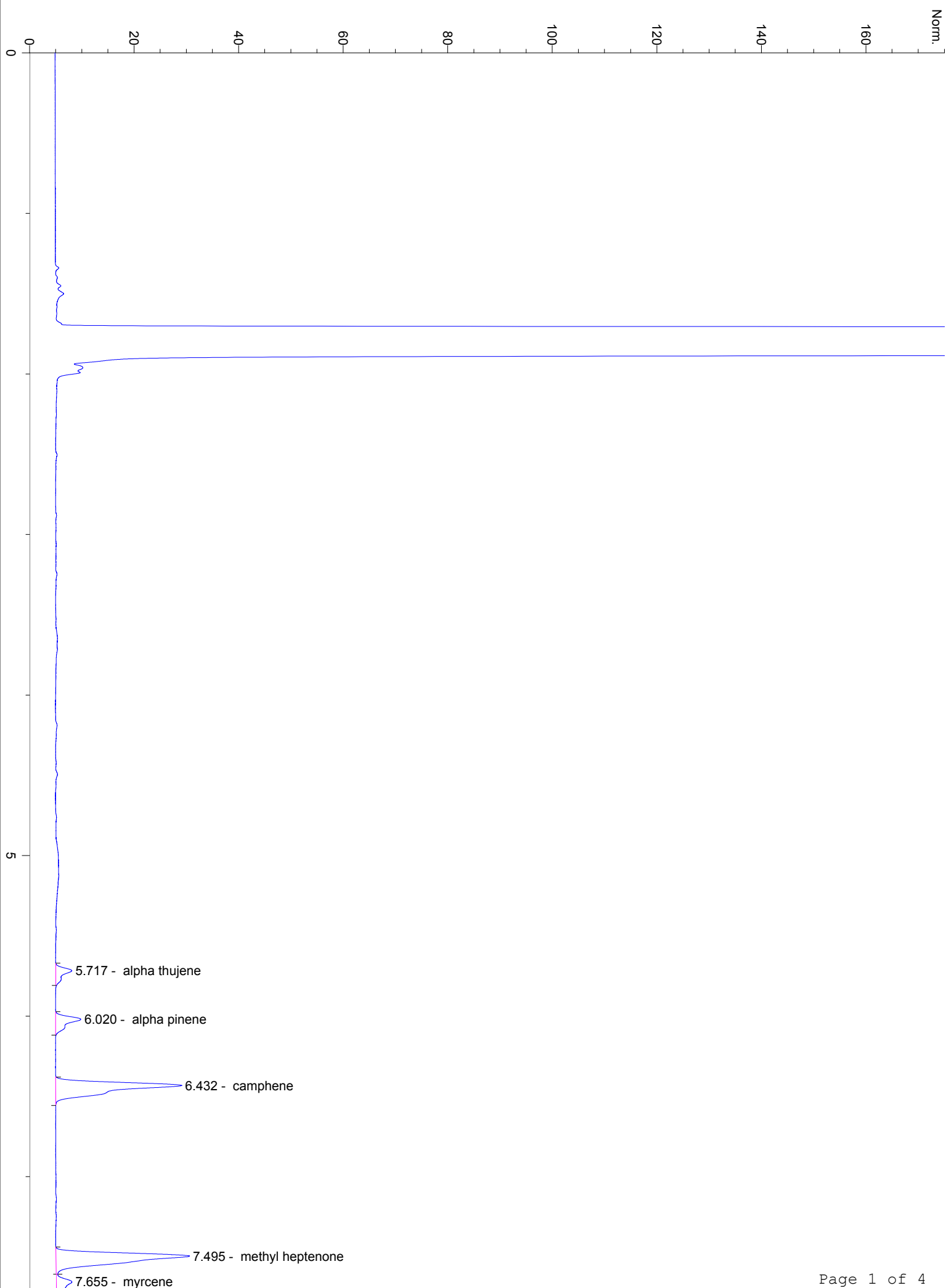
HP-5 5% Phenyl Methyl Siloxane
30.000m
250.000um
0.250um

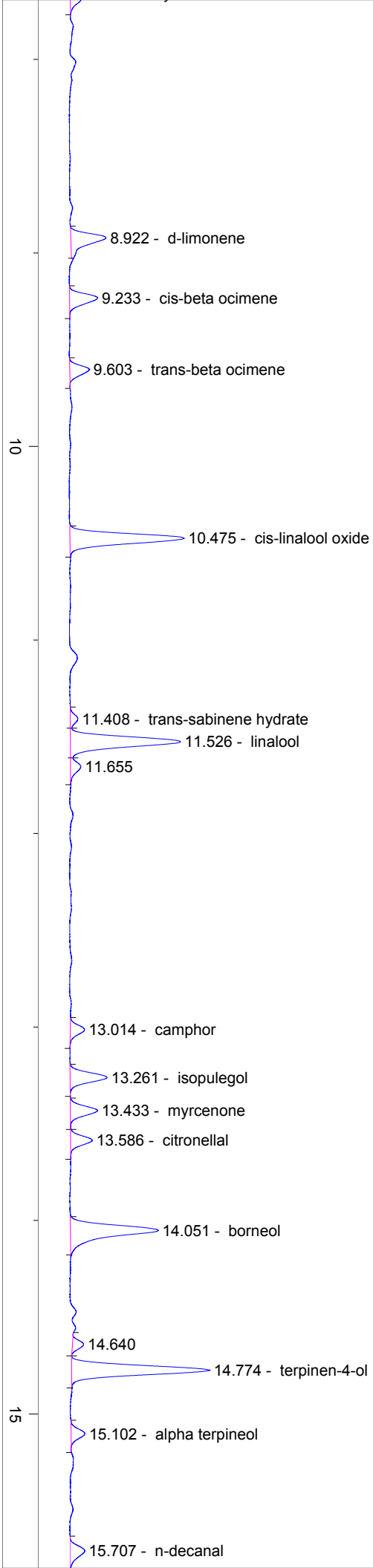
2/23/2023 9:43:34 AM
2/23/2023 9:43:34 AM

2/23/2023
11:17:56 AM



#	Compound Name	Meas. Ret.	Amount	Response	Height	Area	Area %
1	alpha thujene	5.72	0.00	10.36	3.07	10.36	0.24
2	alpha pinene	6.02	0.00	16.76	4.81	16.76	0.39
3	camphene	6.43	0.00	87.06	24.10	87.06	2.01
4	methyl heptenone	7.49	0.00	96.87	25.52	96.87	2.24
5	myrcene	7.66	0.00	12.13	2.96	12.13	0.28
6	d-limonene	8.92	0.00	21.92	5.57	21.92	0.51
7	cis-beta ocimene	9.23	0.00	15.83	4.45	15.83	0.37
8	trans-beta ocimene	9.60	0.00	10.44	3.10	10.44	0.24
9	cis-linalool oxide	10.47	0.00	62.51	18.11	62.51	1.44
10	trans-sabinene hydrate	11.41	0.00	4.02	1.21	4.02	0.09
11	linalool	11.53	0.00	62.65	17.45	62.65	1.45
12		11.66	0.00	6.43	1.64	6.43	0.15
13	camphor	13.01	0.00	7.80	2.26	7.80	0.18
14	isopulegol	13.26	0.00	19.98	5.87	19.98	0.46
15	myrcenone	13.43	0.00	14.62	4.30	14.62	0.34
16	citronellal	13.59	0.00	11.28	3.44	11.28	0.26
17	borneol	14.05	0.00	56.27	13.92	56.27	1.30
18		14.64	0.00	5.23	1.77	5.23	0.12
19	terpinen-4-ol	14.77	0.00	71.09	21.90	71.09	1.64
20	alpha terpineol	15.10	0.00	7.34	2.19	7.34	0.17
21	n-decanal	15.71	0.00	9.90	2.32	9.90	0.23
22	citronellol	16.66	0.00	21.67	4.09	21.67	0.50
23	neral (citral B)	17.21	0.00	1292.04	254.72	1292.04	29.86
24	geraniol	17.74	0.00	323.26	78.98	323.26	7.47
25	geranial (citral A)	18.44	0.00	1691.99	297.08	1691.99	39.10
26		18.94	0.00	13.83	3.66	13.83	0.32
27	geranyl acetate	22.87	0.00	221.99	66.35	221.99	5.13
28		23.16	0.00	2.83	0.95	2.83	0.07
29	beta caryophyllene	24.19	0.00	54.08	15.26	54.08	1.25
30		25.47	0.00	19.04	2.29	19.04	0.44
31	germacrene D	26.52	0.00	6.09	1.74	6.09	0.14
32	germacrene A	27.77	0.00	42.84	10.99	42.84	0.99
33		28.12	0.00	11.11	3.03	11.11	0.26
34		29.51	0.00	4.87	1.33	4.87	0.11
35	caryophyllene oxide	30.23	0.00	11.44	2.96	11.44	0.26







25

24.186 - beta caryophyllene

25.474

26.525 - germacrene D

27.770 - germacrene A

28.123

29.508

30

30.225 - caryophyllene oxide

min