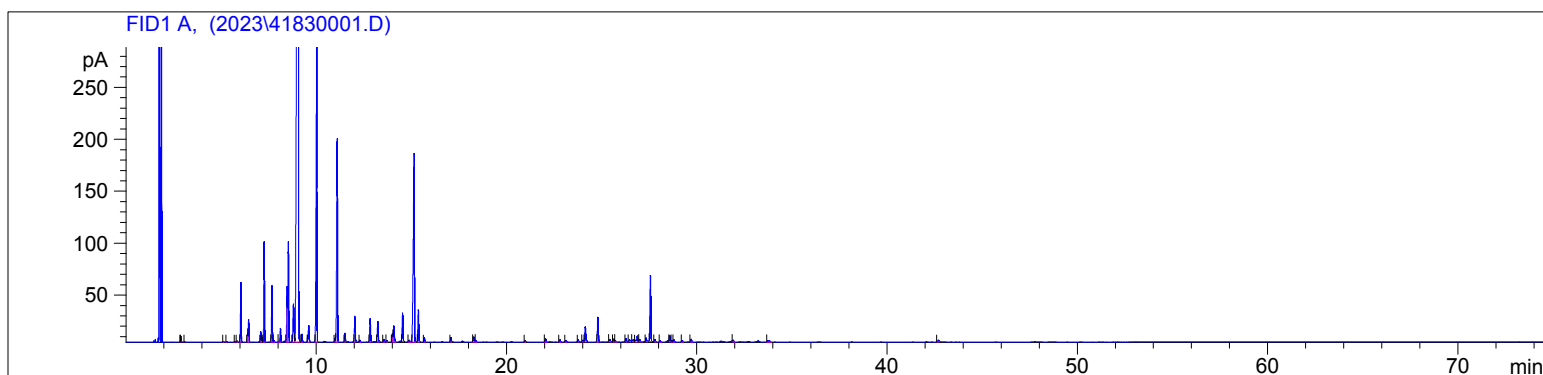


Lime Conventional
4183-IBIN
Mexico
Citrus aurantifolia
Sample/Solvent: 0.07g/0.52g
Injection Amount: 0.2uL
15:1 Split Ratio

HP-5 5% Phenyl Methyl Siloxane
30.000m
250.000um
0.250um

10/2/2023 1:17:38 PM
10/2/2023 1:17:38 PM

10/6/2023
1:10:22 PM



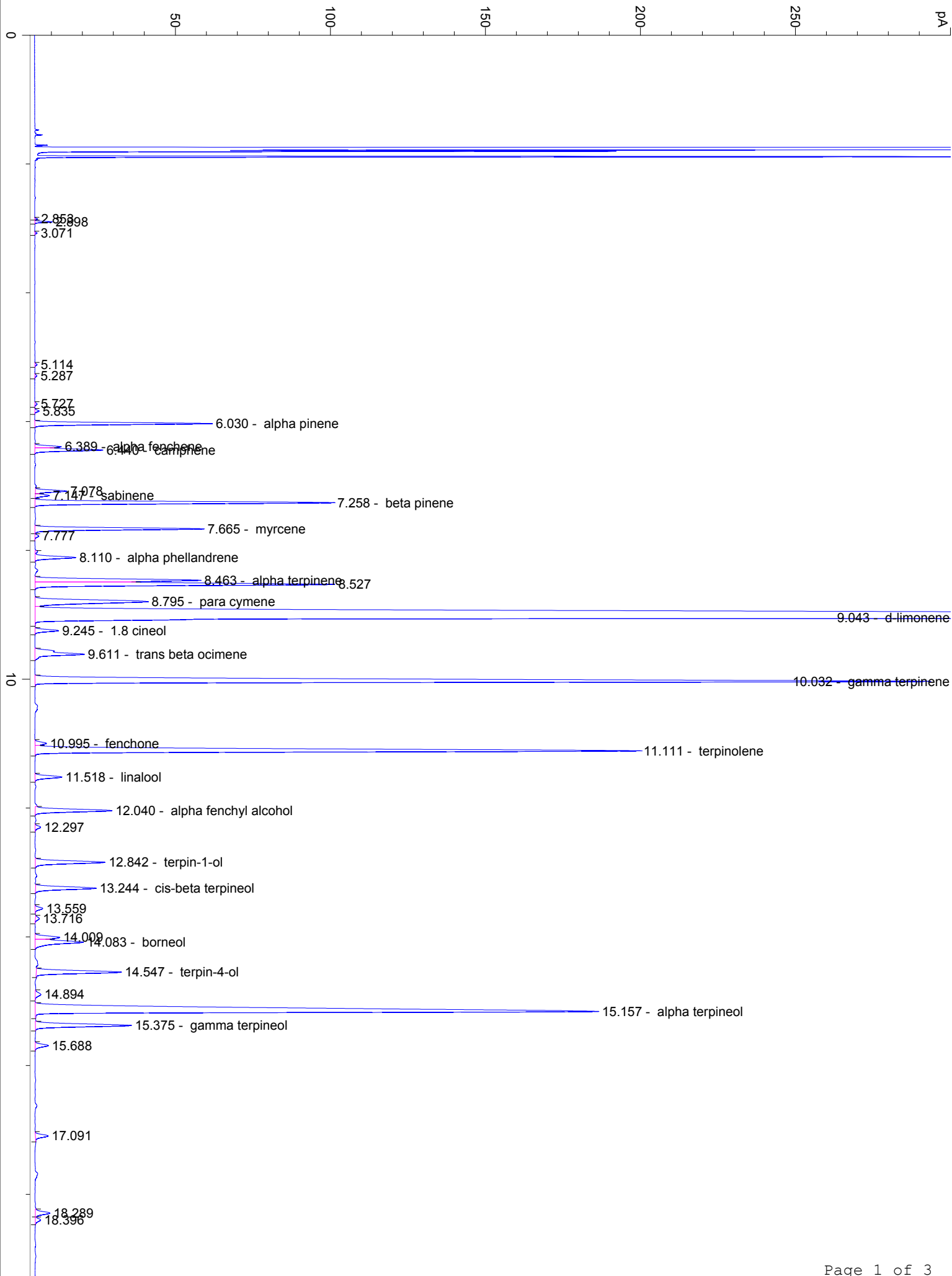
#	Compound Name	Meas. Ret.	Amount	Response	Height	Area	Area %
1		2.85	0.00	1.13	0.93	1.13	0.01
2		2.90	0.00	7.02	5.55	7.02	0.07
3		3.07	0.00	1.03	0.77	1.03	0.01
4		5.11	0.00	1.35	0.72	1.35	0.01
5		5.29	0.00	1.39	0.69	1.39	0.01
6		5.73	0.00	1.62	0.76	1.62	0.02
7		5.83	0.00	2.87	1.37	2.87	0.03
8	alpha pinene	6.03	0.00	126.81	57.28	126.81	1.35
9	alpha fenchene	6.39	0.00	17.56	8.49	17.56	0.19
10	camphene	6.44	0.00	52.56	21.99	52.56	0.56
11		7.08	0.00	24.31	10.12	24.31	0.26
12	sabinene	7.15	0.00	10.70	4.57	10.70	0.11
13	beta pinene	7.26	0.00	239.18	96.35	239.18	2.54
14	myrcene	7.66	0.00	132.99	54.56	132.99	1.41
15		7.78	0.00	3.20	1.27	3.20	0.03
16	alpha phellandrene	8.11	0.00	37.07	13.11	37.07	0.39
17	alpha terpinene	8.46	0.00	142.81	53.38	142.81	1.52
18		8.53	0.00	261.65	96.70	261.65	2.78
19	para cymene	8.79	0.00	137.54	36.42	137.54	1.46
20	d-limonene	9.04	0.00	4745.06	957.70	4745.06	50.35
21	1.8 cineol	9.24	0.00	19.01	7.64	19.01	0.20
22	trans beta ocimene	9.61	0.00	59.86	15.92	59.86	0.64
23	gamma terpinene	10.03	0.00	882.44	288.63	882.44	9.36
24	fenchone	11.00	0.00	10.28	3.69	10.28	0.11
25	terpinolene	11.11	0.00	599.12	195.17	599.12	6.36
26	linalool	11.52	0.00	25.15	8.68	25.15	0.27
27	alpha fenchyl alcohol	12.04	0.00	74.81	24.71	74.81	0.79
28		12.30	0.00	5.26	1.80	5.26	0.06
29	terpin-1-ol	12.84	0.00	69.57	22.51	69.57	0.74
30	cis-beta terpineol	13.24	0.00	60.78	19.56	60.78	0.64
31		13.56	0.00	7.40	2.48	7.40	0.08
32		13.72	0.00	4.06	1.25	4.06	0.04
33		14.01	0.00	23.41	7.91	23.41	0.25
34	borneol	14.08	0.00	57.53	15.54	57.53	0.61
35	terpin-4-ol	14.55	0.00	85.27	27.42	85.27	0.90
36		14.89	0.00	7.11	1.78	7.11	0.08
37	alpha terpineol	15.16	0.00	780.13	181.71	780.13	8.28
38	gamma terpineol	15.38	0.00	95.21	30.94	95.21	1.01
39		15.69	0.00	13.39	4.24	13.39	0.14
40		17.09	0.00	13.27	4.16	13.27	0.14

4183

Instrument 6890

C:\HPCHEM\2\DATA\2023\
41830001.DLime Conventional
4183-IBIN
Mexico
Citrus aurantifolia
Sample/Solvent: 0.07g/0.52g
Injection Amount: 0.2uL
15:1 Split RatioHP-5 5% Phenyl Methyl Siloxane
30.000m
250.000um
0.250um10/2/2023 1:17:38 PM
10/2/2023 1:17:38 PM10/6/2023
1:10:22 PM

#	Compound Name	Meas. Ret.	Amount	Response	Height	Area	Area %
41		18.29	0.00	15.90	4.71	15.90	0.17
42		18.40	0.00	5.99	1.74	5.99	0.06
43		20.99	0.00	5.53	1.52	5.53	0.06
44		22.06	0.00	11.24	3.32	11.24	0.12
45		22.82	0.00	6.52	2.00	6.52	0.07
46		23.13	0.00	5.65	1.54	5.65	0.06
47		23.77	0.00	6.62	2.09	6.62	0.07
48		24.02	0.00	5.50	1.72	5.50	0.06
49	beta ceryophyllene	24.15	0.00	53.76	14.65	53.76	0.57
50	alpha trans bergamotene	24.81	0.00	82.87	23.75	82.87	0.88
51		25.44	0.00	7.85	2.10	7.85	0.08
52		25.63	0.00	8.93	2.77	8.93	0.09
53		25.73	0.00	4.35	1.24	4.35	0.05
54		26.28	0.00	11.73	3.28	11.73	0.12
55		26.47	0.00	5.72	1.84	5.72	0.06
56		26.65	0.00	7.08	1.82	7.08	0.08
57		26.88	0.00	25.92	5.78	25.92	0.28
58		27.01	0.00	8.20	2.11	8.20	0.09
59	trans-alpha farnesene	27.35	0.00	11.22	3.56	11.22	0.12
60	beta bisabolene	27.57	0.00	209.73	63.48	209.73	2.23
61		27.81	0.00	7.63	2.27	7.63	0.08
62		28.08	0.00	4.27	1.25	4.27	0.05
63		28.59	0.00	20.44	6.06	20.44	0.22
64		28.71	0.00	4.65	1.42	4.65	0.05
65		28.81	0.00	6.74	2.07	6.74	0.07
66		29.25	0.00	5.48	1.50	5.48	0.06
67		29.71	0.00	9.82	2.61	9.82	0.10
68		31.92	0.00	5.43	1.64	5.43	0.06
69		33.82	0.00	9.60	1.51	9.60	0.10
70		42.68	0.00	8.01	1.80	8.01	0.08



20

30

20.986

22.058

22.817

23.128

23.772

24.021

24.149 - beta ceryophyllene

24.810 - alpha trans bergamotene

25.440

25.633

25.728

26.285

26.469

26.652

26.880

27.014

27.347 - trans-alpha farnesene

27.571 - beta bisabolene

27.806

28.084

28.587

28.705

28.805

29.249

29.714

31.920

33.819

40

42.682

50

min