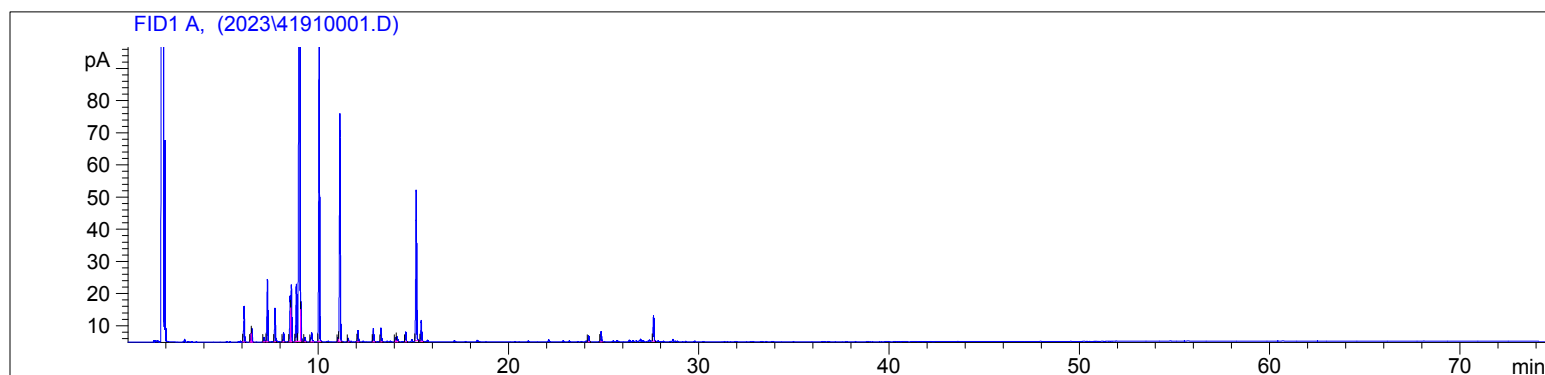
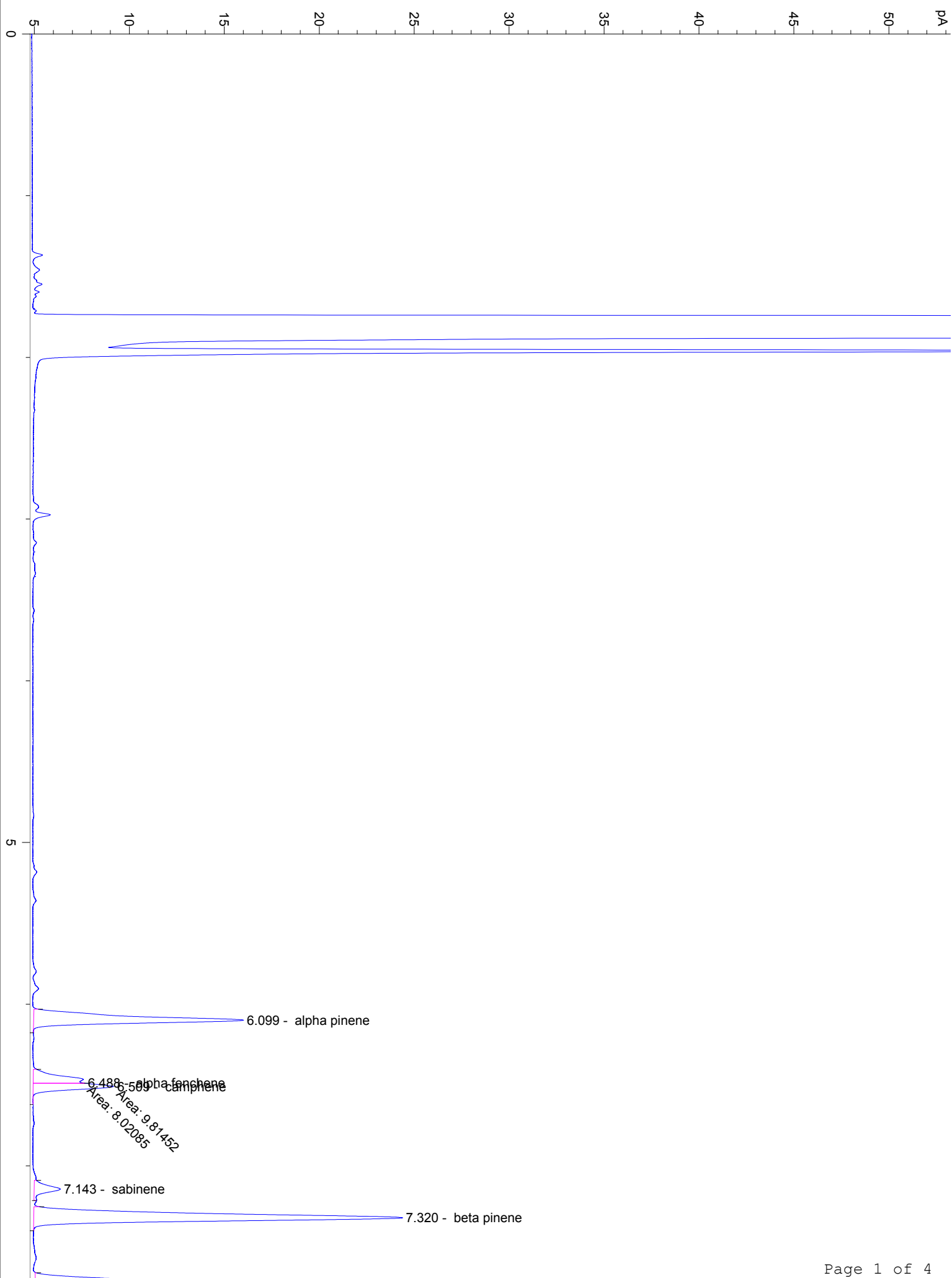


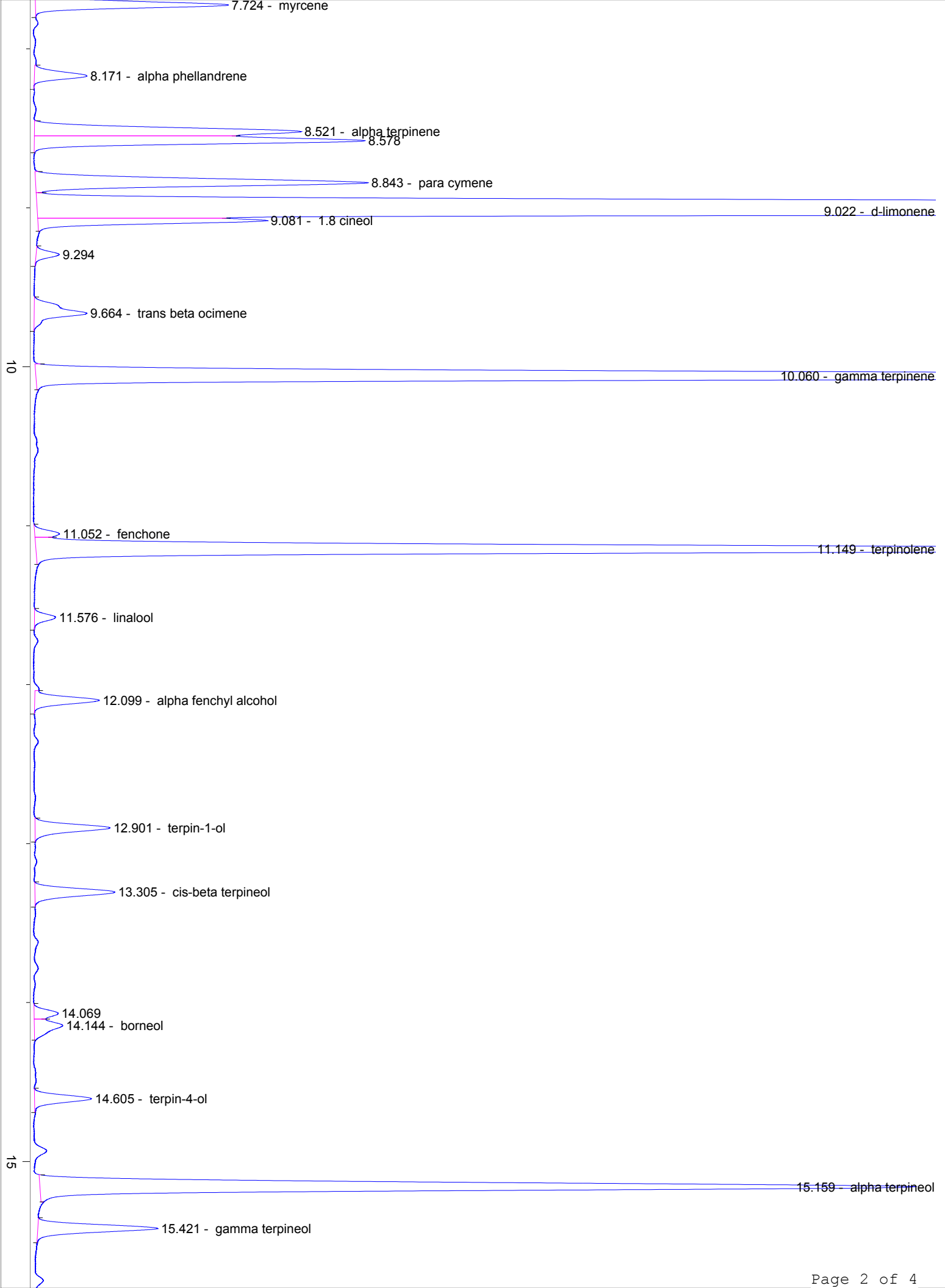
4191

Instrument 6890

C:\HPCHEM\2\DATA\2023\
41910001.DLime Organic Distilled
4191-EBGL
Sri Lanka
Citrus aurantifolia
Sample/Solvent: 0.05g/0.51g
Injection Amount: 0.2uL
15:1 Split RatioHP-5 5% Phenyl Methyl Siloxane
30.000m
250.000um
0.250um2/1/2023 12:10:06 PM
2/1/2023 12:10:06 PM2/1/2023
2:58:20 PM

#	Compound Name	Meas. Ret.	Amount	Response	Height	Area	Area %
1	alpha pinene	6.10	0.00	31.60	11.04	31.60	1.36
2	alpha fenchene	6.49	0.00	8.02	2.70	8.02	0.34
3	camphene	6.51	0.00	9.81	4.24	9.81	0.42
4	sabinene	7.14	0.00	4.18	1.38	4.18	0.18
5	beta pinene	7.32	0.00	58.46	19.41	58.46	2.51
6	myrcene	7.72	0.00	29.79	10.32	29.79	1.28
7	alpha phellandrene	8.17	0.00	8.91	2.81	8.91	0.38
8	alpha terpinene	8.52	0.00	44.09	14.26	44.09	1.89
9		8.58	0.00	51.01	17.70	51.01	2.19
10	para cymene	8.84	0.00	58.11	17.79	58.11	2.49
11	d-limonene	9.02	0.00	1180.15	321.82	1180.15	50.66
12	1.8 cineol	9.08	0.00	27.07	12.29	27.07	1.16
13		9.29	0.00	3.42	1.24	3.42	0.15
14	trans beta ocimene	9.66	0.00	12.41	2.82	12.41	0.53
15	gamma terpinene	10.06	0.00	294.83	96.62	294.83	12.66
16	fenchone	11.05	0.00	3.46	1.32	3.46	0.15
17	terpinolene	11.15	0.00	221.78	70.72	221.78	9.52
18	linalool	11.58	0.00	3.45	1.12	3.45	0.15
19	alpha fenchyl alcohol	12.10	0.00	10.87	3.45	10.87	0.47
20	terpin-1-ol	12.90	0.00	13.21	4.01	13.21	0.57
21	cis-beta terpineol	13.31	0.00	14.43	4.27	14.43	0.62
22		14.07	0.00	4.06	1.28	4.06	0.17
23	borneol	14.14	0.00	6.59	1.53	6.59	0.28
24	terpin-4-ol	14.60	0.00	9.65	3.05	9.65	0.41
25	alpha terpineol	15.16	0.00	155.23	46.78	155.23	6.66
26	gamma terpineol	15.42	0.00	20.33	6.41	20.33	0.87
27	beta caryophyllene	24.21	0.00	6.78	1.86	6.78	0.29
28	alpha trans bergamotene	24.87	0.00	11.10	3.19	11.10	0.48
29	beta bisabolene	27.63	0.00	26.63	7.89	26.63	1.14





20

