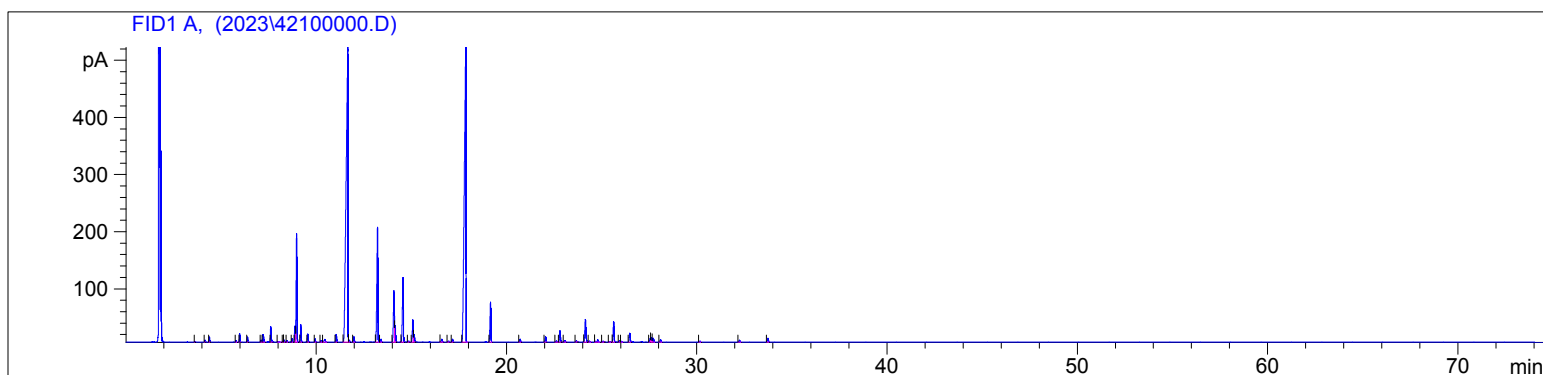


4210

Instrument 6890

C:\HPCHEM\2\DATA\2023\  
4210000.DLavandin Grosso Organic  
EO4210-FZAN  
Spain  
Lavandula hybrida  
Sample/Solvent: 0.09g/0.53g  
Injection Amount: 0.2uL  
20:1 Split RatioHP-5 5% Phenyl Methyl Siloxane  
30.000m  
250.000um  
0.250um6/8/2023 10:41:27 AM  
6/8/2023 10:41:27 AM6/8/2023  
3:42:34 PM

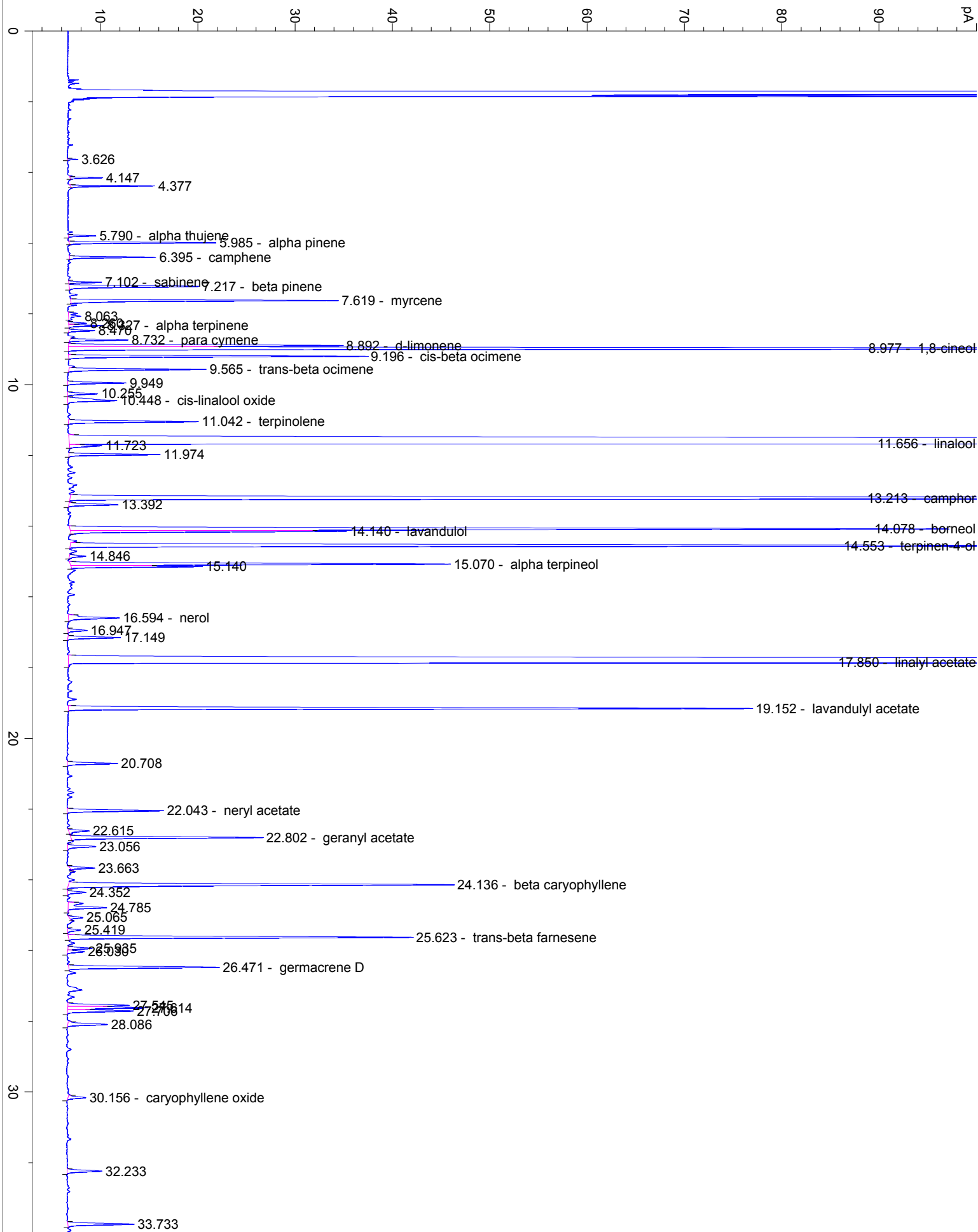
#	Compound Name	Meas. Ret.	Amount	Response	Height	Area	Area %
1		3.63	0.00	1.56	1.06	1.56	0.01
2		4.15	0.00	6.16	3.36	6.16	0.06
3		4.38	0.00	15.99	8.68	15.99	0.15
4	alpha thujene	5.79	0.00	5.79	2.82	5.79	0.06
5	alpha pinene	5.98	0.00	33.23	15.09	33.23	0.32
6	camphene	6.39	0.00	20.47	8.86	20.47	0.20
7	sabinene	7.10	0.00	7.88	3.37	7.88	0.08
8	beta pinene	7.22	0.00	47.22	13.35	47.22	0.45
9	myrcene	7.62	0.00	72.14	27.47	72.14	0.69
10		8.06	0.00	7.00	1.25	7.00	0.07
11		8.26	0.00	4.49	1.83	4.49	0.04
12	alpha terpinene	8.33	0.00	9.01	3.52	9.01	0.09
13		8.47	0.00	6.81	2.65	6.81	0.07
14	para cymene	8.73	0.00	15.92	5.97	15.92	0.15
15	d-limonene	8.89	0.00	79.78	28.16	79.78	0.77
16	1,8-cineol	8.98	0.00	538.07	189.54	538.07	5.18
17	cis-beta ocimene	9.20	0.00	82.21	30.68	82.21	0.79
18	trans-beta ocimene	9.56	0.00	40.24	14.08	40.24	0.39
19		9.95	0.00	16.61	5.99	16.61	0.16
20		10.25	0.00	9.22	3.09	9.22	0.09
21	cis-linalool oxide	10.45	0.00	22.59	5.04	22.59	0.22
22	terpinolene	11.04	0.00	41.19	13.34	41.19	0.40
23	linalool	11.66	0.00	3614.06	533.70	3614.06	34.77
24		11.72	0.00	10.99	3.31	10.99	0.11
25		11.97	0.00	25.56	9.35	25.56	0.25
26	camphor	13.21	0.00	724.39	200.95	724.39	6.97
27		13.39	0.00	15.73	5.05	15.73	0.15
28	borneol	14.08	0.00	320.71	90.09	320.71	3.09
29	lavandulol	14.14	0.00	78.48	28.39	78.48	0.76
30	terpinen-4-ol	14.55	0.00	382.66	113.03	382.66	3.68
31		14.85	0.00	5.65	1.67	5.65	0.05
32	alpha terpineol	15.07	0.00	126.22	39.06	126.22	1.21
33		15.14	0.00	37.27	13.47	37.27	0.36
34	nerol	16.59	0.00	20.85	5.23	20.85	0.20
35		16.95	0.00	6.37	1.95	6.37	0.06
36		17.15	0.00	17.40	5.40	17.40	0.17
37	linalyl acetate	17.85	0.00	3049.17	522.86	3049.17	29.33
38	lavandulyl acetate	19.15	0.00	227.01	70.23	227.01	2.18
39		20.71	0.00	16.55	5.17	16.55	0.16
40	neryl acetate	22.04	0.00	31.99	9.87	31.99	0.31

4210

Instrument 6890

C:\HPCHEM\2\DATA\2023\  
42100000.DLavandin Grosso Organic  
EO4210-FZAN  
Spain  
Lavandula hybrida  
Sample/Solvent: 0.09g/0.53g  
Injection Amount: 0.2uL  
20:1 Split RatioHP-5 5% Phenyl Methyl Siloxane  
30.000m  
250.000um  
0.250um6/8/2023 10:41:27 AM  
6/8/2023 10:41:27 AM6/8/2023  
3:42:34 PM

#	Compound Name	Meas. Ret.	Amount	Response	Height	Area	Area %
41		22.62	0.00	7.61	2.11	7.61	0.07
42	geranyl acetate	22.80	0.00	64.35	19.69	64.35	0.62
43		23.06	0.00	10.43	2.88	10.43	0.10
44		23.66	0.00	7.21	2.56	7.21	0.07
45	beta caryophyllene	24.14	0.00	154.47	39.56	154.47	1.49
46		24.35	0.00	6.34	1.87	6.34	0.06
47		24.79	0.00	20.42	3.94	20.42	0.20
48		25.06	0.00	5.03	1.41	5.03	0.05
49		25.42	0.00	4.68	1.34	4.68	0.05
50	trans-beta farnesene	25.62	0.00	119.44	35.34	119.44	1.15
51		25.93	0.00	8.25	2.48	8.25	0.08
52		26.03	0.00	5.96	1.73	5.96	0.06
53	germacrene D	26.47	0.00	54.27	15.46	54.27	0.52
54		27.54	0.00	20.35	6.28	20.35	0.20
55		27.61	0.00	28.21	8.22	28.21	0.27
56		27.71	0.00	24.51	6.77	24.51	0.24
57		28.09	0.00	15.20	4.08	15.20	0.15
58	caryophyllene oxide	30.16	0.00	6.66	1.83	6.66	0.06
59		32.23	0.00	13.04	3.57	13.04	0.13
60		33.73	0.00	24.08	6.78	24.08	0.23



40

50

60

70

min