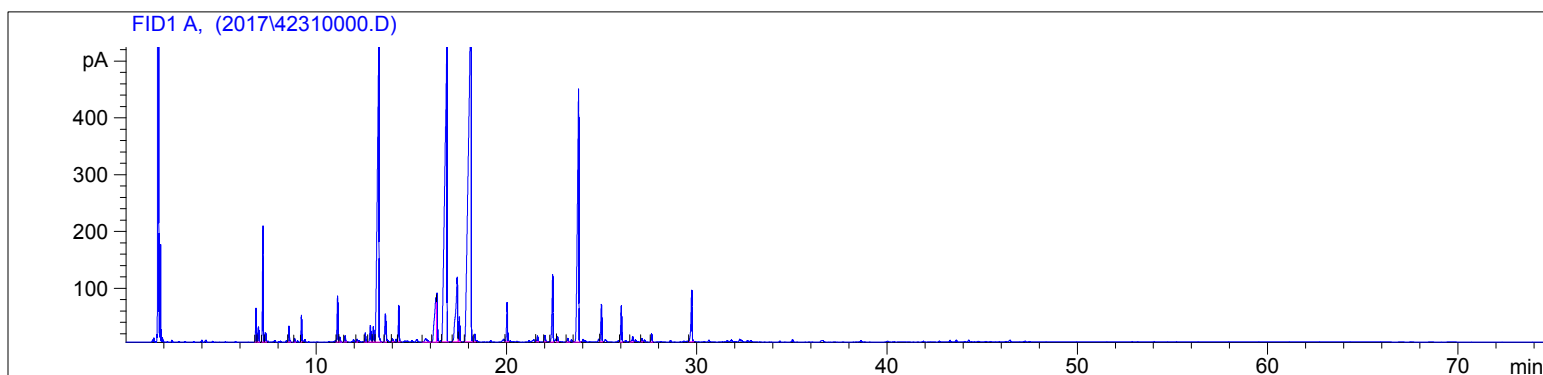
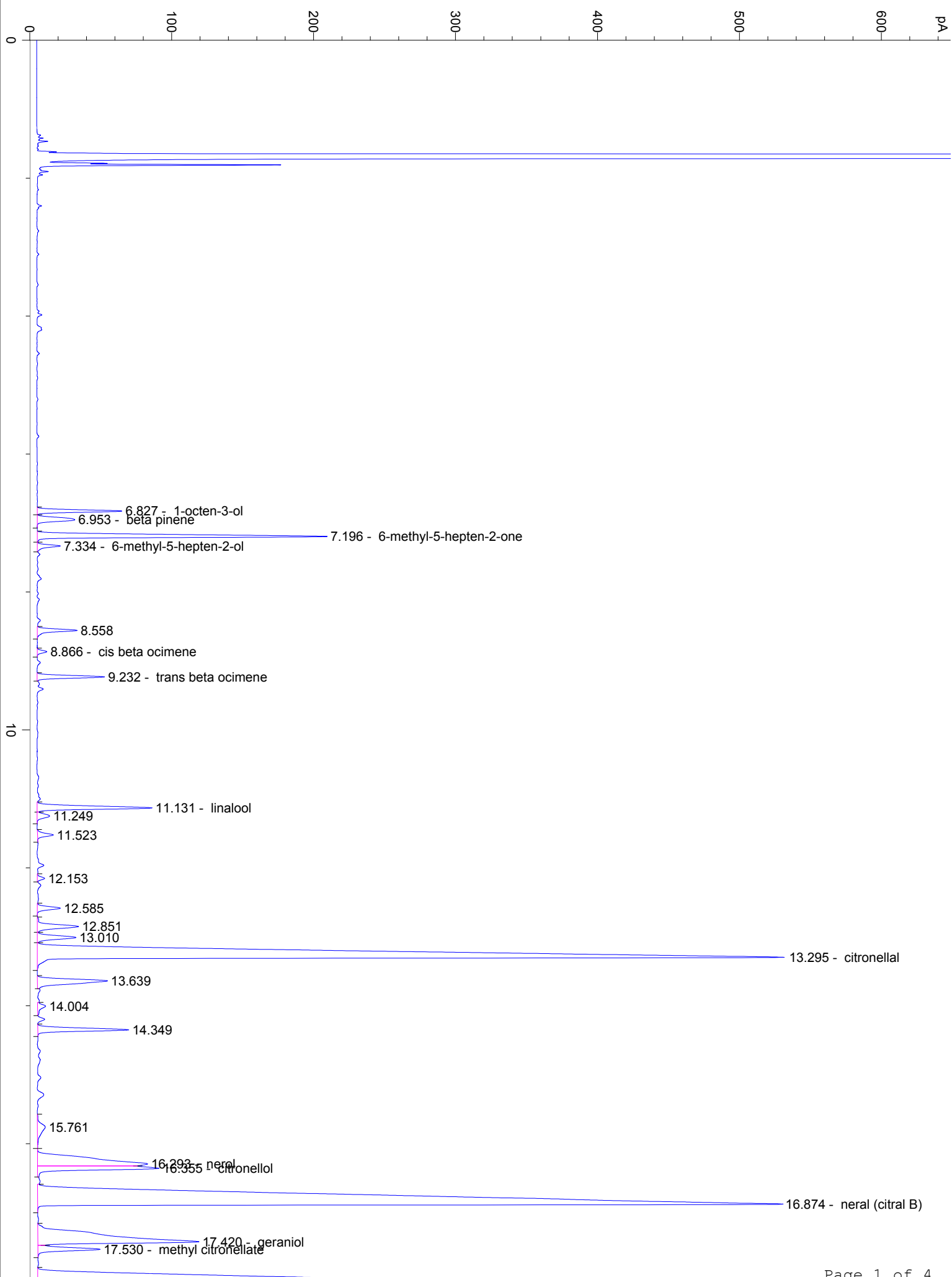


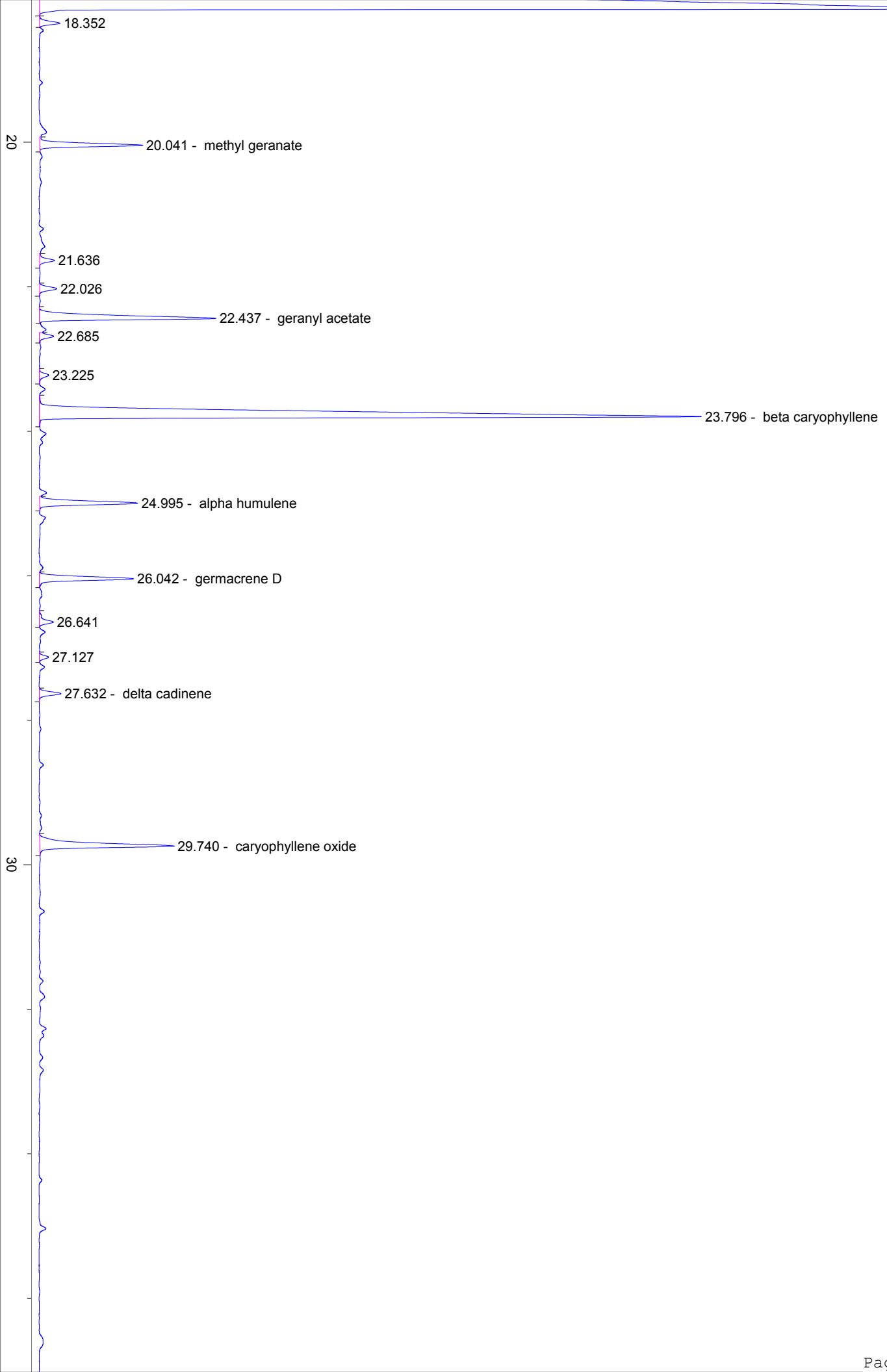
4231-120115

Instrument 6890

C:\HPCHEM\2\DATA\2017\
42310000.DMelissa/Lemon Balm
4231-120115
Bulgaria
melissa officinalis
Sample/CH4: 0.11g/0.34g
Injection: 0.2uLHP-5 5% Phenyl Methyl Siloxane
30.000m
250.000um
0.250um9/20/2017 10:27:41 AM
9/20/2017 10:27:41 AM9/20/2017
4:28:30 PM

#	Compound Name	Meas. Ret.	Amount	Response	Height	Area	Area %
1	1-octen-3-ol	6.83	100.00	144.69	59.60	144.69	0.66
2	beta pinene	6.95	100.00	103.31	26.39	103.31	0.47
3	6-methyl-5-hepten-2-one	7.20	100.00	561.87	204.18	561.87	2.58
4	6-methyl-5-hepten-2-ol	7.33	100.00	45.06	16.28	45.06	0.21
5		8.56	100.00	81.25	28.03	81.25	0.37
6	cis beta ocimene	8.87	100.00	17.76	6.69	17.76	0.08
7	trans beta ocimene	9.23	100.00	125.62	47.47	125.62	0.58
8	linalool	11.13	100.00	253.83	80.87	253.83	1.16
9		11.25	100.00	35.68	8.79	35.68	0.16
10		11.52	100.00	35.33	11.12	35.33	0.16
11		12.15	100.00	14.88	5.07	14.88	0.07
12		12.58	100.00	51.80	16.14	51.80	0.24
13		12.85	100.00	113.08	28.99	113.08	0.52
14		13.01	100.00	99.09	27.17	99.09	0.45
15	citronellal	13.30	100.00	3091.21	527.08	3091.21	14.18
16		13.64	100.00	220.47	49.31	220.47	1.01
17		14.00	100.00	26.18	5.66	26.18	0.12
18		14.35	100.00	196.34	64.06	196.34	0.90
19		15.76	100.00	53.68	5.55	53.68	0.25
20	nerol	16.29	100.00	520.79	77.56	520.79	2.39
21	citronellol	16.36	100.00	297.03	85.65	297.03	1.36
22	neral (citral B)	16.87	100.00	4280.39	524.39	4280.39	19.64
23	geraniol	17.42	100.00	790.04	113.45	790.04	3.63
24	methyl citronellate	17.53	100.00	144.92	43.72	144.92	0.66
25	geranial	18.15	100.00	6347.86	631.24	6347.86	29.13
26		18.35	100.00	47.16	13.69	47.16	0.22
27	methyl geranate	20.04	100.00	226.75	69.06	226.75	1.04
28		21.64	100.00	36.05	10.06	36.05	0.17
29		22.03	100.00	43.31	11.58	43.31	0.20
30	geranyl acetate	22.44	100.00	461.89	118.66	461.89	2.12
31		22.69	100.00	35.77	9.59	35.77	0.16
32		23.23	100.00	25.71	6.31	25.71	0.12
33	beta caryophyllene	23.80	100.00	2300.94	445.16	2300.94	10.56
34	alpha humulene	25.00	100.00	243.65	66.00	243.65	1.12
35	germacrene D	26.04	100.00	233.34	63.35	233.34	1.07
36		26.64	100.00	39.17	9.38	39.17	0.18
37		27.13	100.00	20.77	6.14	20.77	0.10
38	delta cadinene	27.63	100.00	52.10	14.61	52.10	0.24
39	caryophyllene oxide	29.74	100.00	375.39	90.11	375.39	1.72





40

50

60

70

min