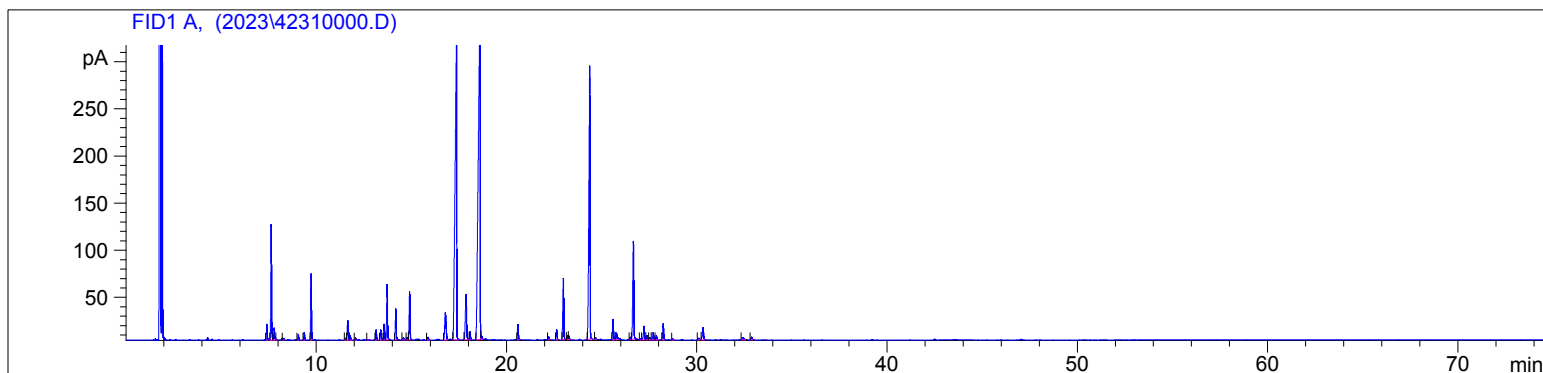


4231

Instrument 6890

C:\HPCHEM\2\DATA\2023\
42310000.DMelissa Organic
4231-EZBL
Bulgaria
Melissa officinalis
Sample/Solvent: 0.08g/0.50g
Injection Amount: 0.2uL
15:1 Split RatioHP-5 5% Phenyl Methyl Siloxane
30.000m
250.000um
0.250um3/23/2023 10:40:44 AM
3/23/2023 10:40:44 AM3/24/2023
9:08:09 AM

#	Compound Name	Meas. Ret.	Amount	Response	Height	Area	Area %
1	beta pinene	7.40	0.00	47.10	16.93	47.10	0.55
2	6-methyl-5-hepten-2-one	7.63	0.00	331.27	122.00	331.27	3.87
3	6-methyl-5-hepten-2-ol	7.78	0.00	36.73	12.95	36.73	0.43
4		7.91	0.00	2.35	0.85	2.35	0.03
5	delta-3-carene	8.27	0.00	6.34	1.98	6.34	0.07
6	para-cymene	9.05	0.00	16.34	5.70	16.34	0.19
7	limonene	9.36	0.00	22.20	7.92	22.20	0.26
8	trans beta ocimene	9.74	0.00	190.02	69.37	190.02	2.22
9		11.54	0.00	6.30	1.95	6.30	0.07
10	linalool	11.66	0.00	64.84	20.73	64.84	0.76
11		11.80	0.00	14.67	4.23	14.67	0.17
12	cis-rose oxide	12.07	0.00	7.65	2.19	7.65	0.09
13	trans-rose oxide	12.71	0.00	2.18	0.82	2.18	0.03
14	trans-limonene oxide	13.15	0.00	34.48	10.83	34.48	0.40
15	isopulegol	13.40	0.00	37.73	10.71	37.73	0.44
16		13.58	0.00	53.43	16.68	53.43	0.62
17	citronellal	13.73	0.00	184.22	58.40	184.22	2.15
18	somenthone	14.19	0.00	104.32	32.84	104.32	1.22
19	menthol	14.59	0.00	7.56	2.47	7.56	0.09
20		14.79	0.00	7.71	2.52	7.71	0.09
21	isomenthol	14.92	0.00	163.14	51.05	163.14	1.91
22		15.88	0.00	12.19	3.07	12.19	0.14
23	citronellol/nerol	16.80	0.00	146.77	28.91	146.77	1.71
24	neral (citral B)	17.38	0.00	1881.41	317.53	1881.41	21.97
25	geraniol	17.88	0.00	215.45	47.72	215.45	2.52
26	methyl citronellate	18.09	0.00	27.77	8.41	27.77	0.32
27	geranial	18.62	0.00	2508.92	369.27	2508.92	29.30
28	neo-menthyl acetate	18.70	0.00	13.22	3.75	13.22	0.15
29	methyl geranate	20.61	0.00	52.25	16.00	52.25	0.61
30	geranic acid	22.22	0.00	9.97	2.95	9.97	0.12
31	alpha copaene	22.64	0.00	36.58	10.66	36.58	0.43
32	geranyl acetate	23.00	0.00	225.48	65.06	225.48	2.63
33		23.21	0.00	12.83	3.87	12.83	0.15
34		23.29	0.00	12.87	3.87	12.87	0.15
35	beta caryophyllene	24.38	0.00	1269.06	287.13	1269.06	14.82
36		24.69	0.00	5.07	1.45	5.07	0.06
37	alpha humulene	25.61	0.00	76.36	21.46	76.36	0.89
38		25.79	0.00	26.26	6.69	26.26	0.31
39		26.51	0.00	8.72	2.57	8.72	0.10
40	germacrene D	26.68	0.00	396.30	103.94	396.30	4.63

4231

Instrument 6890

C:\HPCHEM\2\DATA\2023\
42310000.D

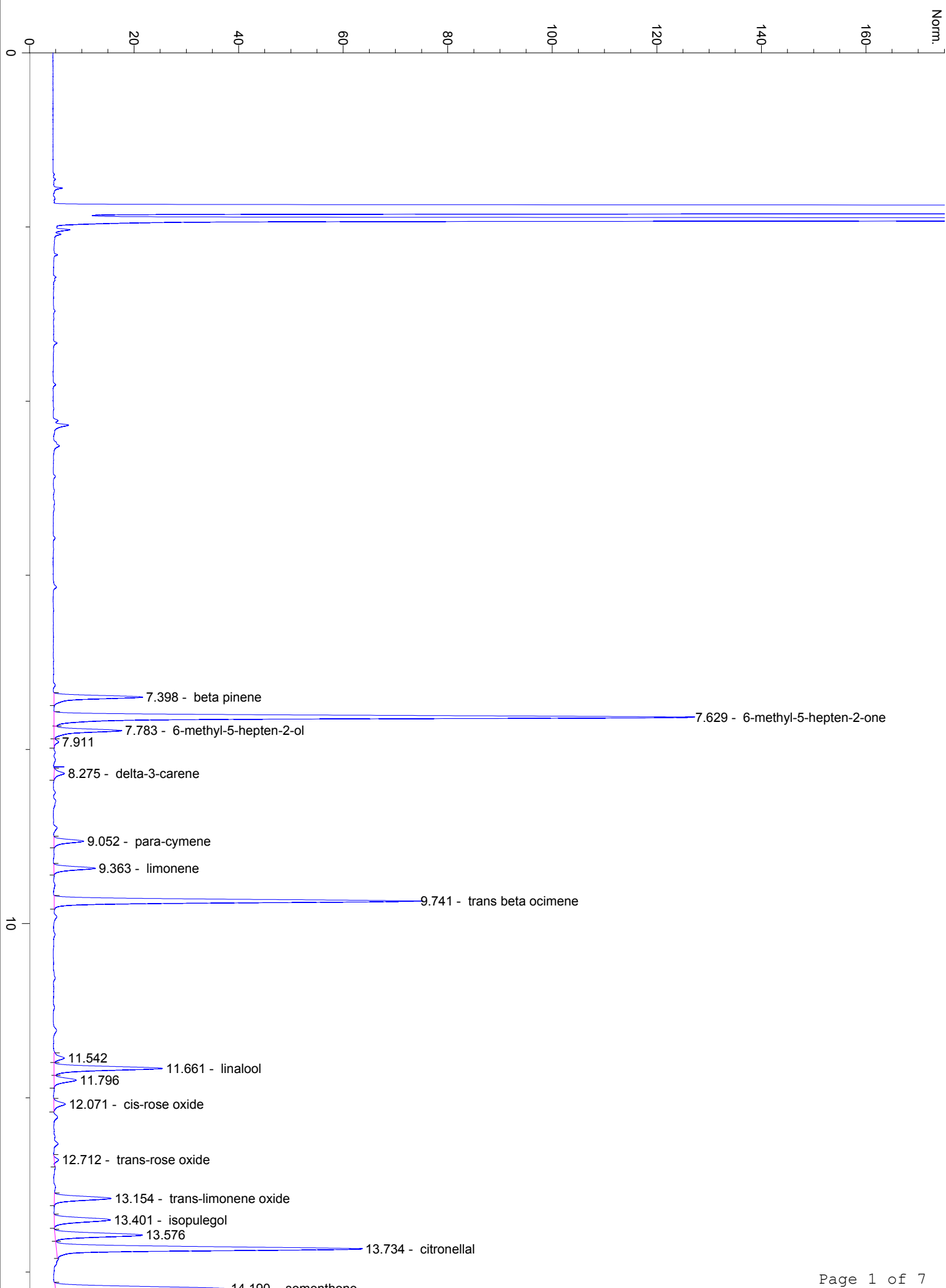
Melissa Organic
4231-EZBL
Bulgaria
Melissa officinalis
Sample/Solvent: 0.08g/0.50g
Injection Amount: 0.2uL
15:1 Split Ratio

HP-5 5% Phenyl Methyl Siloxane
30.000m
250.000um
0.250um

3/23/2023 10:40:44 AM
3/23/2023 10:40:44 AM

3/24/2023
9:08:09 AM

#	Compound Name	Meas. Ret.	Amount	Response	Height	Area	Area %
41		27.04	0.00	3.40	1.04	3.40	0.04
42		27.23	0.00	53.20	14.34	53.20	0.62
43		27.39	0.00	15.93	4.51	15.93	0.19
44		27.54	0.00	8.31	2.25	8.31	0.10
45		27.72	0.00	27.76	7.70	27.76	0.32
46		27.88	0.00	17.59	4.42	17.59	0.21
47	delta cadinene	28.24	0.00	63.42	17.49	63.42	0.74
48		28.74	0.00	4.38	1.26	4.38	0.05
49		30.10	0.00	7.45	1.89	7.45	0.09
50		30.34	0.00	56.21	12.92	56.21	0.66
51		32.44	0.00	15.78	2.59	15.78	0.18
52		32.88	0.00	12.11	2.92	12.11	0.14





30
30.104
30.338

32.444

32.881

40

Melissa Organic
 4231-EZBL
 Bulgaria
 Melissa officinalis
 Sample/Solvent: 0.08g/0.50g
 Injection Amount: 0.2uL
 15:1 Split Ratio

```

=====
Injection Date   : 3/23/2023 10:40:44 AM
Sample Name     : 4231
Acq. Operator   : ARI
Acq. Instrument : Instrument 6890
Acq. Method     : C:\HPCHEM\2\METHODS\ADAMS.M
Last changed    : 10/18/2022 2:24:57 PM by SAM
Analysis Method : C:\HPCHEM\2\METHODS\ADAMS.M
Last changed    : 3/24/2023 9:08:40 AM by Ari
                  (modified after loading)
=====
  
```

```

=====
                          Area Percent Report
=====
  
```

```

Sorted By           :      Signal
Calib. Data Modified :      3/24/2023 9:07:53 AM
Multiplier          :      1.0000
Dilution            :      1.0000
Use Multiplier & Dilution Factor with ISTDs
  
```

Signal 1: FID1 A,

Peak #	RetTime [min]	Type	Width [min]	Area [pA*s]	Area %	Name
1	7.398	BB	0.0429	47.10260	0.55003	beta pinene
2	7.629	BV	0.0421	331.26950	3.86835	6-methyl-5-hepten-2-one
3	7.783	VB	0.0427	36.72544	0.42886	6-methyl-5-hepten-2-ol
4	7.911	BP	0.0425	2.34900	0.02743	
5	8.275	BB	0.0476	6.33663	0.07400	delta-3-carene
6	9.052	PB	0.0446	16.33764	0.19078	para-cymene
7	9.363	PB	0.0439	22.20189	0.25926	limonene
8	9.741	BB	0.0424	190.01758	2.21890	trans beta ocimene
9	11.542	BV	0.0504	6.29801	0.07354	
10	11.661	VV	0.0493	64.84171	0.75718	linalool
11	11.796	VB	0.0541	14.67338	0.17135	
12	12.071	PP	0.0535	7.65269	0.08936	cis-rose oxide
13	12.712	PB	0.0400	2.17994	0.02546	trans-rose oxide
14	13.154	BB	0.0491	34.47581	0.40259	trans-limonene oxide
15	13.401	BP	0.0547	37.72552	0.44053	isopulegol
16	13.576	BV	0.0510	53.42927	0.62391	
17	13.734	VB	0.0488	184.22273	2.15123	citronellal
18	14.190	PB	0.0507	104.32325	1.21822	somenthone
19	14.585	PP	0.0493	7.56045	0.08829	menthol
20	14.786	PV	0.0493	7.71225	0.09006	
21	14.918	VB	0.0501	163.13864	1.90503	isomenthol
22	15.883	PP	0.0623	12.19088	0.14236	
23	16.796	PB	0.0792	146.76764	1.71386	citronellol/nerol
24	17.378	BB	0.0771	1881.40625	21.96985	neral (citral B)
25	17.883	BB	0.0719	215.45473	2.51594	geraniol
26	18.090	BP	0.0513	27.76790	0.32426	methyl citronellate
27	18.618	PV	0.0865	2508.92383	29.29759	geranial
28	18.701	VB	0.0532	13.22437	0.15443	neo-menthyl acetate
29	20.610	PB	0.0517	52.24884	0.61013	methyl geranate
30	22.221	BB	0.0522	9.96968	0.11642	geranic acid
31	22.645	BP	0.0536	36.58090	0.42717	alpha copaene
32	22.996	BB	0.0540	225.47610	2.63296	geranyl acetate
33	23.207	BV	0.0515	12.82503	0.14976	
34	23.293	VP	0.0524	12.87234	0.15031	
35	24.384	BB	0.0652	1269.06091	14.81927	beta caryophyllene
36	24.690	PP	0.0560	5.06586	0.05916	

Melissa Organic
 4231-EZBL
 Bulgaria
 Melissa officinalis
 Sample/Solvent: 0.08g/0.50g
 Injection Amount: 0.2uL
 15:1 Split Ratio

```

=====
Injection Date   : 3/23/2023 10:40:44 AM
Sample Name     : 4231
Acq. Operator   : ARI
Acq. Instrument : Instrument 6890
Acq. Method     : C:\HPCHEM\2\METHODS\ADAMS.M
Last changed    : 10/18/2022 2:24:57 PM by SAM
Analysis Method : C:\HPCHEM\2\METHODS\ADAMS.M
Last changed    : 3/24/2023 9:08:40 AM by Ari
                  (modified after loading)
=====
  
```

Peak #	RetTime [min]	Type	Width [min]	Area [pA*s]	Area %	Name
37	25.607	BP	0.0567	76.35799	0.89166	alpha humulene
38	25.792	BP	0.0586	26.25699	0.30661	
39	26.512	PP	0.0549	8.71919	0.10182	
40	26.676	VB	0.0597	396.29785	4.62771	germacrene D
41	27.044	PV	0.0509	3.39806	0.03968	
42	27.233	VV	0.0569	53.20325	0.62127	
43	27.391	VV	0.0556	15.93166	0.18604	
44	27.541	VV	0.0574	8.31104	0.09705	
45	27.719	VV	0.0565	27.76339	0.32420	
46	27.884	VB	0.0600	17.58833	0.20539	
47	28.243	BB	0.0575	63.42105	0.74059	delta cadinene
48	28.741	PP	0.0533	4.37635	0.05110	
49	30.104	BP	0.0604	7.44652	0.08696	
50	30.338	BB	0.0651	56.20788	0.65636	
51	32.444	PB	0.0984	15.78357	0.18431	
52	32.881	BB	0.0636	12.11091	0.14142	

Totals : 8563.58324 100.0000

Results obtained with enhanced integrator!
 53 Warnings or Errors (10 first messages follow) :

Warning : Calibration warnings (see calibration table listing)
 Warning : Invalid calibration curve, (beta pinene)
 Warning : Invalid calibration curve, (6-methyl-5-hepten-2-one)
 Warning : Invalid calibration curve, (6-methyl-5-hepten-2-ol)
 Warning : Invalid calibration curve
 Warning : Invalid calibration curve, (delta-3-carene)
 Warning : Invalid calibration curve, (para-cymene)
 Warning : Invalid calibration curve, (limonene)
 Warning : Invalid calibration curve, (trans beta ocimene)
 Warning : Invalid calibration curve

Summed Peaks Report

Signal 1: FID1 A,

Final Summed Peaks Report

Name	Total Area [pA*s]	Area %
beta pinene	47.10260	0.5500
6-methyl-5-hept	331.26950	3.8684
6-methyl-5-hept	36.72544	0.4289

Data File C:\HPCHEM\2\DATA\2023\42310000.D
 Melissa Organic
 4231-EZBL
 Bulgaria
 Melissa officinalis
 Sample/Solvent: 0.08g/0.50g
 Injection Amount: 0.2uL
 15:1 Split Ratio

Sample Name: 4231

```

=====
Injection Date   : 3/23/2023 10:40:44 AM
Sample Name     : 4231
Acq. Operator   : ARI
Acq. Instrument : Instrument 6890
Acq. Method     : C:\HPCHEM\2\METHODS\ADAMS.M
Last changed    : 10/18/2022 2:24:57 PM by SAM
Analysis Method : C:\HPCHEM\2\METHODS\ADAMS.M
Last changed    : 3/24/2023 9:08:40 AM by Ari
                  (modified after loading)
=====
  
```

Name	Total Area [pA*s]	Area %
	384.51317	4.4901
delta-3-carene	6.33663	0.0740
para-cymene	16.33764	0.1908
limonene	22.20189	0.2593
trans beta ocim	190.01758	2.2189
linalool	64.84171	0.7572
cis-rose oxide	7.65269	0.0894
trans-rose oxid	2.17994	0.0255
trans-limonene	34.47581	0.4026
isopulegol	37.72552	0.4405
citronellal	184.22273	2.1512
somenthone	104.32325	1.2182
menthol	7.56045	0.0883
isomenthol	163.13864	1.9050
citronellol/ner	146.76764	1.7139
neral (citral B	1881.40625	21.9698
geraniol	215.45473	2.5159
methyl citronel	27.76790	0.3243
geranial	2508.92383	29.2976
neo-menthyl ace	13.22437	0.1544
methyl geranate	52.24884	0.6101
geranic acid	9.96968	0.1164
alpha copaene	36.58090	0.4272
geranyl acetate	225.47610	2.6330
beta caryophyll	1269.06091	14.8193
alpha humulene	76.35799	0.8917
germacrene D	396.29785	4.6277
delta cadinene	63.42105	0.7406
Totals :		95.5373

*** End of Report ***