



Amrita Aromatherapy

Chronomatogram Report

www.amrita.net

Sample Info:

Sample ID : Myrtle_Green_Wildcrafted_Albania_4272_092614 Amount [mg] : 0
 Sample : Myrtle_Green_Wildcrafted_Albania_4272_092614 ISTD Amount : 0
 Inj. Volume [mL] : 0.1 Dilution : 1

Method : DEF1-GCM By : Administrator
 Description :
 Created : 12/2/2013 11:27 AM Modified : 11/28/2014 4:24 PM

Calibration : Myrtle_Green_4272_092614 By : Administrator
 Description :
 Created : 11/28/2014 4:20:24 PM Modified : 11/28/2014 4:24:24 PM

Result Table (ESTD - Myrtle_Green_Wildcrafted_Albania_4272_092614 - Detector 1)

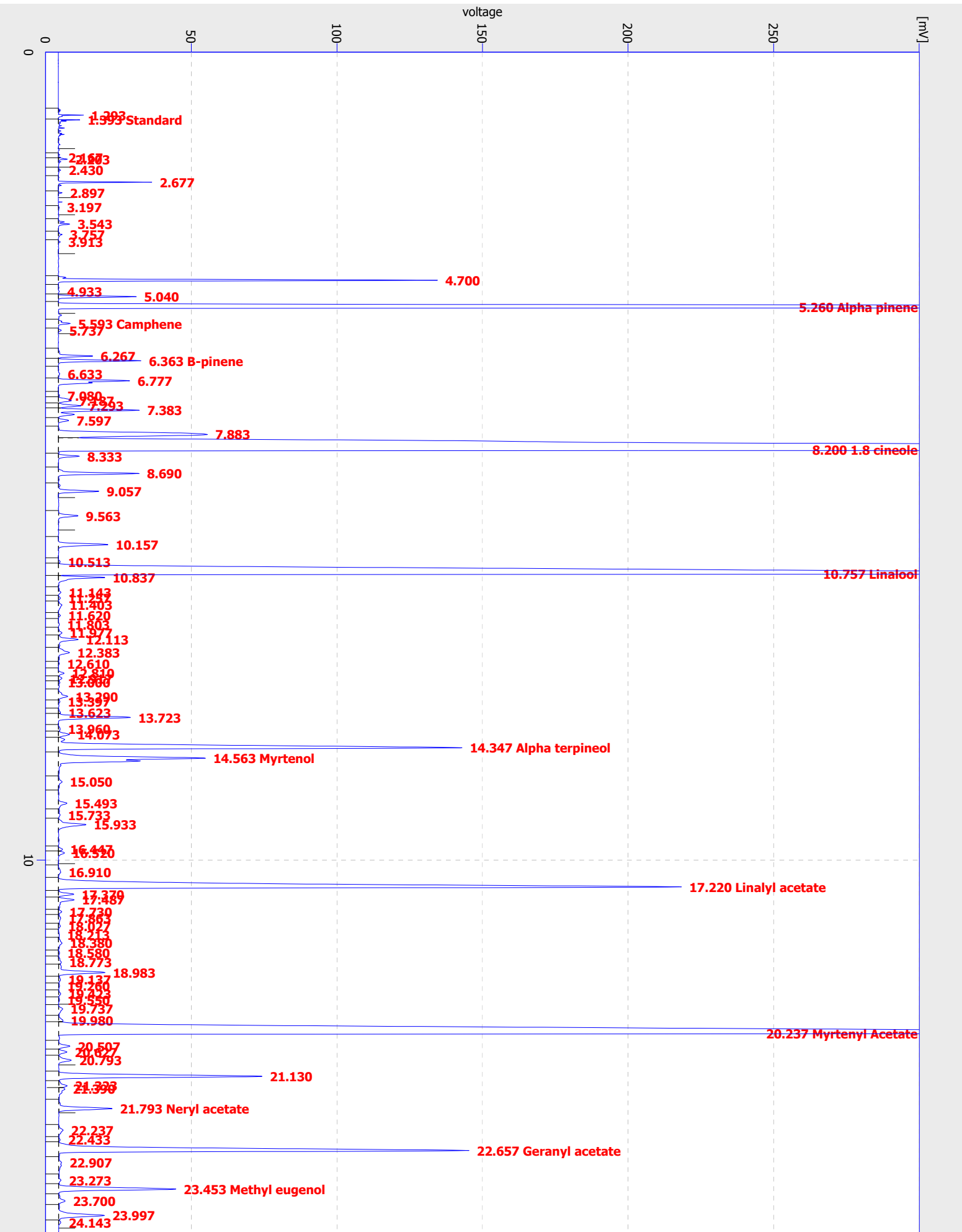
	Compound Name	Reten. Time [min]	Area [mV.s]	Height [mV]	Area [%]	Height [%]	Resolution [-]
1		1.293	10.215	8.635	0.0	0.2	
2	Standard	1.393	18.520	7.361	0.1	0.2	3.933
3		2.167	1.213	0.708	0.0	0.0	30.418
4		2.203	6.917	3.037	0.0	0.1	0.927
5		2.430	2.050	0.815	0.0	0.0	5.015
6		2.677	38.953	32.135	0.2	0.7	6.237
7		2.897	1.745	1.299	0.0	0.0	5.563
8		3.197	1.201	0.298	0.0	0.0	4.425
9		3.543	9.901	3.868	0.0	0.1	4.909
10		3.757	3.473	1.293	0.0	0.0	4.442
11		3.913	1.996	0.719	0.0	0.0	3.262
12		4.700	237.569	130.255	1.1	2.9	16.381
13		4.933	1.315	0.330	0.0	0.0	4.347
14		5.040	55.413	26.783	0.3	0.6	1.798
15	Alpha pinene	5.260	3091.313	1100.076	14.7	24.3	3.115
16	Camphene	5.593	10.575	4.042	0.1	0.1	4.720
17		5.737	2.316	1.001	0.0	0.0	2.206
18		6.267	27.563	11.796	0.1	0.3	8.157
19	B-pinene	6.363	64.261	28.390	0.3	0.6	1.555
20		6.633	2.409	0.480	0.0	0.0	3.540
21		6.777	83.031	24.464	0.4	0.5	1.750
22		7.080	1.015	0.394	0.0	0.0	3.977
23		7.187	18.422	4.480	0.1	0.1	1.049
24		7.293	22.183	7.787	0.1	0.2	1.049
25		7.383	85.115	27.794	0.4	0.6	1.180
26		7.597	10.800	3.514	0.1	0.1	2.697
27		7.883	263.920	51.194	1.3	1.1	2.416
28	1.8 cineole	8.200	6924.567	1101.527	32.9	24.3	1.900
29		8.333	18.655	7.253	0.1	0.2	1.073
30		8.690	72.839	27.719	0.3	0.6	5.261
31		9.057	38.325	13.874	0.2	0.3	4.992
32		9.563	21.199	6.734	0.1	0.1	6.185
33		10.157	52.652	17.029	0.3	0.4	7.243
34		10.513	1.942	0.644	0.0	0.0	4.073
35	Linalool	10.757	2666.730	438.008	12.7	9.7	1.795
36		10.837	48.394	15.981	0.2	0.4	0.644
37		11.143	3.889	0.882	0.0	0.0	3.619
38		11.257	2.361	0.712	0.0	0.0	1.216

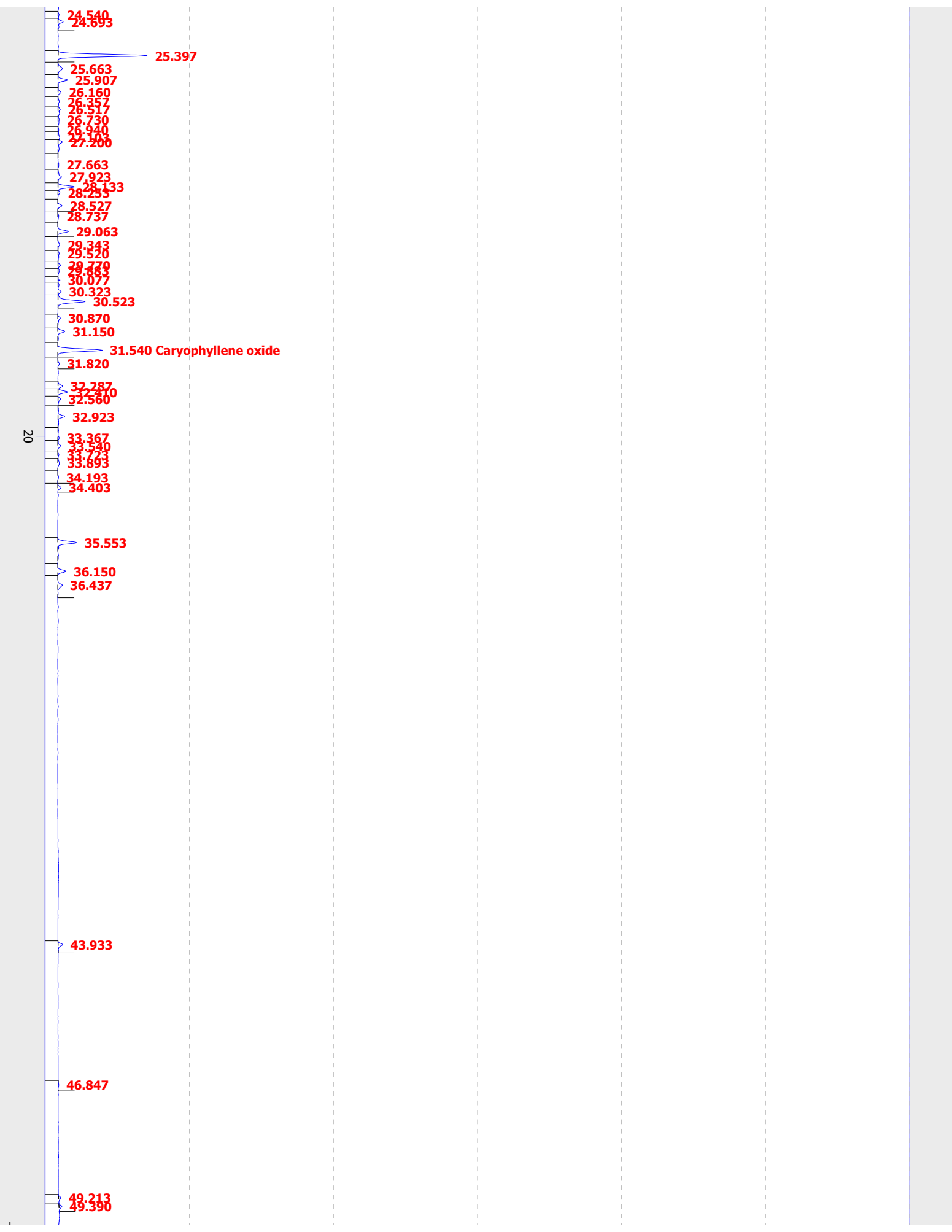
Result Table (ESTD - Myrtle_Green_Wildcrafted_Albania_4272_092614 - Detector 1)

	Compound Name	Reten. Time [min]	Area [mV.s]	Height [mV]	Area [%]	Height [%]	Resolution [-]
39		11.403	7.150	1.252	0.0	0.0	1.207
40		11.620	2.220	0.699	0.0	0.0	1.784
41		11.803	1.449	0.349	0.0	0.0	1.967
42		11.977	4.908	1.251	0.0	0.0	1.805
43		12.113	26.250	6.848	0.1	0.2	1.466
44		12.383	19.852	3.845	0.1	0.1	2.583
45		12.610	1.138	0.320	0.0	0.0	2.112
46		12.810	6.467	1.975	0.0	0.0	2.212
47		12.917	4.303	1.234	0.0	0.0	1.180
48		13.000	2.824	0.512	0.0	0.0	0.843
49		13.290	15.023	3.204	0.1	0.1	2.933
50		13.397	2.566	0.548	0.0	0.0	1.021
51		13.623	2.460	0.741	0.0	0.0	2.293
52		13.723	84.658	24.751	0.4	0.5	1.142
53		13.960	2.948	0.633	0.0	0.0	1.948
54		14.073	14.666	3.833	0.1	0.1	0.872
55	Alpha terpineol	14.347	571.098	138.665	2.7	3.1	2.481
56	Myrtenol	14.563	266.212	50.509	1.3	1.1	1.967
57		15.050	7.653	1.301	0.0	0.0	4.417
58		15.493	14.067	2.958	0.1	0.1	4.024
59		15.733	3.860	0.617	0.0	0.0	2.178
60		15.933	44.794	9.487	0.2	0.2	1.815
61		16.447	4.602	1.444	0.0	0.0	4.911
62		16.520	8.310	2.088	0.0	0.0	0.702
63		16.910	5.197	0.791	0.0	0.0	2.761
64	Linalyl acetate	17.220	963.613	214.033	4.6	4.7	2.110
65		17.370	17.351	5.288	0.1	0.1	1.435
66		17.487	22.068	5.445	0.1	0.1	1.291
67		17.730	3.947	1.134	0.0	0.0	2.610
68		17.863	5.021	0.771	0.0	0.0	0.925
69		18.027	2.961	0.686	0.0	0.0	1.051
70		18.213	1.815	0.302	0.0	0.0	1.322
71		18.380	8.213	1.241	0.0	0.0	1.035
72		18.580	1.634	0.398	0.0	0.0	1.475
73		18.773	5.490	0.995	0.0	0.0	1.316
74		18.983	62.915	16.002	0.3	0.4	1.487
75		19.137	3.753	0.696	0.0	0.0	1.131
76		19.260	1.970	0.370	0.0	0.0	0.780
77		19.423	3.354	0.758	0.0	0.0	1.230
78		19.550	1.664	0.369	0.0	0.0	1.068
79		19.737	8.106	1.450	0.0	0.0	1.377
80		19.980	6.358	1.526	0.0	0.0	1.833
81	Myrtenyl Acetate	20.237	3177.565	481.923	15.1	10.6	1.714
82		20.507	14.049	3.886	0.1	0.1	1.912
83		20.627	10.135	2.851	0.0	0.1	1.249
84		20.793	17.585	4.319	0.1	0.1	1.639
85		21.130	248.831	69.815	1.2	1.5	3.221
86		21.323	11.877	2.913	0.1	0.1	1.801
87		21.390	12.821	2.156	0.1	0.0	0.536
88	Neryl acetate	21.793	64.728	18.350	0.3	0.4	3.482
89		22.237	9.025	1.515	0.0	0.0	3.488
90		22.433	1.789	0.515	0.0	0.0	1.547
91	Geranyl acetate	22.657	573.227	140.971	2.7	3.1	2.196
92		22.907	9.690	0.973	0.0	0.0	1.475
93		23.273	3.807	0.780	0.0	0.0	2.163
94	Methyl eugenol	23.453	144.655	40.282	0.7	0.9	1.722
95		23.700	10.769	2.251	0.1	0.0	2.298
96		23.997	65.679	15.726	0.3	0.3	2.693
97		24.143	3.063	0.738	0.0	0.0	1.298

Result Table (ESTD - Myrtle_Green_Wildcrafted_Albania_4272_092614 - Detector 1)

	Compound Name	Reten. Time [min]	Area [mV.s]	Height [mV]	Area [%]	Height [%]	Resolution [-]
98		24.540	1.701	0.363	0.0	0.0	3.343
99		24.693	8.039	1.804	0.0	0.0	1.392
100		25.397	117.167	30.928	0.6	0.7	6.729
101		25.663	9.224	1.502	0.0	0.0	1.967
102		25.907	13.277	3.295	0.1	0.1	1.833
103		26.160	4.432	1.032	0.0	0.0	2.360
104		26.357	2.805	0.527	0.0	0.0	1.698
105		26.517	5.754	0.807	0.0	0.0	1.317
106		26.730	3.583	0.437	0.0	0.0	1.162
107		26.940	1.223	0.312	0.0	0.0	1.162
108		27.103	3.993	0.664	0.0	0.0	1.180
109		27.200	9.000	1.510	0.0	0.0	0.713
110		27.663	2.468	0.330	0.0	0.0	3.154
111		27.923	6.798	1.286	0.0	0.0	1.805
112		28.133	21.255	5.719	0.1	0.1	2.009
113		28.253	3.183	0.710	0.0	0.0	1.089
114		28.527	5.850	1.459	0.0	0.0	2.419
115		28.737	1.745	0.328	0.0	0.0	1.690
116		29.063	14.156	3.644	0.1	0.1	2.689
117		29.343	3.332	0.618	0.0	0.0	2.478
118		29.520	3.231	0.481	0.0	0.0	1.025
119		29.770	3.461	0.879	0.0	0.0	1.526
120		29.883	2.684	0.464	0.0	0.0	0.819
121		30.077	0.745	0.741	0.0	0.0	2.074
122		30.323	6.169	1.157	0.0	0.0	3.969
123		30.523	40.595	9.489	0.2	0.2	1.815
124		30.870	4.360	0.844	0.0	0.0	3.068
125		31.150	10.696	2.424	0.1	0.1	2.542
126	Caryophyllene oxide	31.540	60.300	15.386	0.3	0.3	3.633
127		31.820	2.199	0.514	0.0	0.0	2.542
128		32.287	6.458	1.608	0.0	0.0	4.130
129		32.410	12.801	3.306	0.1	0.1	1.119
130		32.560	4.424	0.919	0.0	0.0	1.327
131		32.923	11.752	2.354	0.1	0.1	3.216
132		33.367	3.101	0.467	0.0	0.0	4.024
133		33.540	4.987	1.128	0.0	0.0	1.573
134		33.723	1.720	0.399	0.0	0.0	1.708
135		33.893	3.588	0.547	0.0	0.0	1.204
136		34.193	1.517	0.253	0.0	0.0	1.863
137		34.403	4.292	1.095	0.0	0.0	1.652
138		35.553	28.435	6.606	0.1	0.1	10.713
139		36.150	11.518	2.863	0.1	0.1	5.558
140		36.437	9.654	1.593	0.0	0.0	2.206
141		43.933	6.991	1.628	0.0	0.0	57.692
142		46.847	1.118	0.243	0.0	0.0	25.783
143		49.213	3.569	0.842	0.0	0.0	20.434
144		49.390	4.309	1.023	0.0	0.0	1.525
145		50.143	2.516	0.517	0.0	0.0	6.202
		Total	21045.331	4531.640	100.0	100.0	





24.540
24.693

25.397

25.663
25.907
26.160
26.357
26.517
26.730
26.940
27.100

27.663
27.923
28.133
28.253
28.527
28.737

29.063
29.343
29.520
29.779
30.077
30.323
30.523

30.870
31.150

31.540 Caryophyllene oxide

31.820

32.287
32.510
32.560

32.923

20

33.367
33.540
33.723
33.893
34.193
34.403

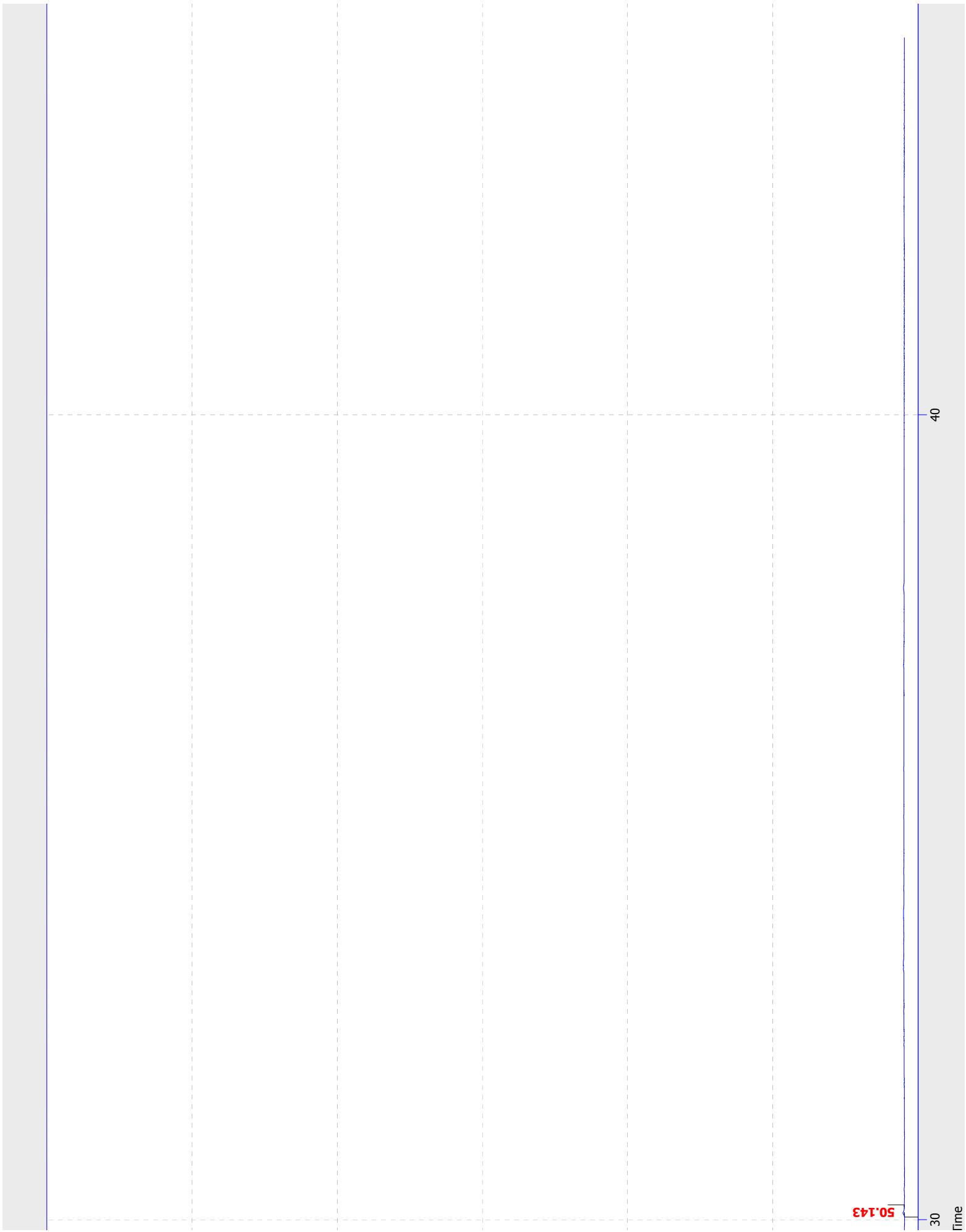
35.553

36.150
36.437

43.933

46.847

49.213
49.390



— Myrtle_Green_Wildcrafted_Albania_4272_092614 - Detector 1

60
[min.]

50