

4361

Instrument 6890

C:\HPCHEM\2\DATA\2023\
43610000.D

Nutmeg CO2 Org

HP-5 5% Phenyl Methyl Siloxane

4361-KBBN

30.000m

Germany

250.000um

Myristica fragrans

0.250um

Sample/Solvent/Ethanol: 0.06g/0.

51g/0.05g

Injection Amount: 0.2uL

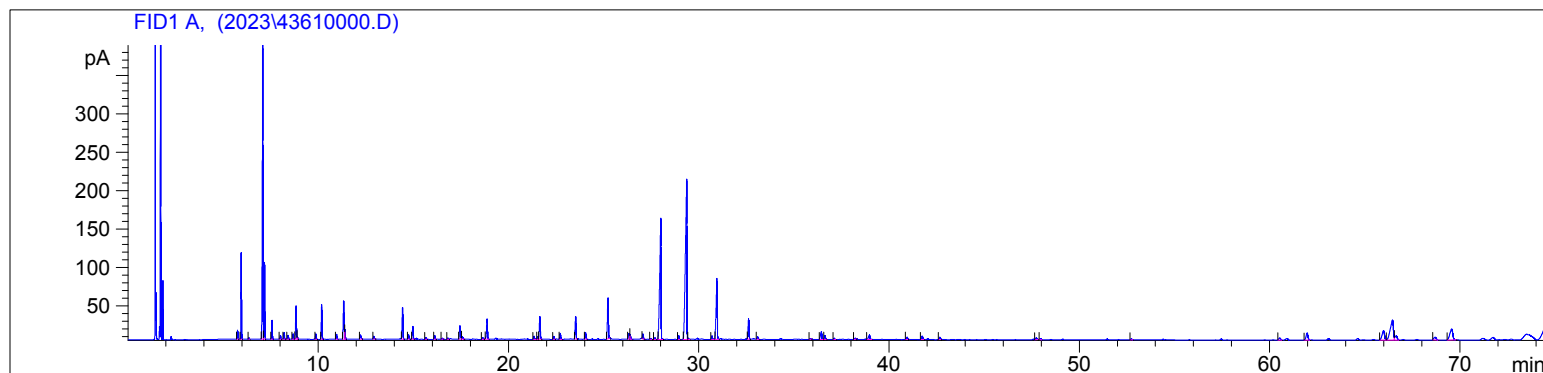
20:1 Split Ratio

12/4/2023 10:53:48 AM

1/26/2024

12/4/2023 10:53:48 AM

9:48:21 AM



#	Compound Name	Meas. Ret.	Amount	Response	Height	Area	Area %
1	alpha thujene	5.75	0.00	29.49	11.85	29.49	0.46
2	alpha pinene	5.94	0.00	242.10	112.32	242.10	3.75
3	camphene	6.35	0.00	3.41	1.55	3.41	0.05
4	sabinene	7.08	0.00	1011.85	389.18	1011.85	15.68
5	beta pinene	7.17	0.00	225.02	99.86	225.02	3.49
6	myrcene	7.56	0.00	57.13	24.55	57.13	0.89
7	alpha phellandene	8.00	0.00	12.91	4.89	12.91	0.20
8	delta-3-carene	8.20	0.00	21.51	8.58	21.51	0.33
9	alpha terpinene	8.41	0.00	13.64	5.18	13.64	0.21
10	para cymene	8.67	0.00	17.66	6.88	17.66	0.27
11	d-limonene	8.83	0.00	124.62	43.40	124.62	1.93
12		8.90	0.00	6.60	2.76	6.60	0.10
13	gamma terpinene	9.88	0.00	19.23	6.87	19.23	0.30
14	cis-sabinene hydrate	10.19	0.00	125.77	44.85	125.77	1.95
15	terpinolene	10.97	0.00	18.12	6.26	18.12	0.28
16	linalool	11.34	0.00	147.42	49.62	147.42	2.28
17		11.41	0.00	32.46	12.39	32.46	0.50
18	trans-limonene oxide	12.23	0.00	20.27	5.48	20.27	0.31
19		12.93	0.00	12.42	3.66	12.42	0.19
20	terpin-4-ol	14.44	0.00	129.25	41.07	129.25	2.00
21	alpha terpineol	14.75	0.00	18.59	5.70	18.59	0.29
22	trans-piperitol	14.98	0.00	53.33	16.60	53.33	0.83
23		15.66	0.00	7.19	2.03	7.19	0.11
24		16.13	0.00	15.04	4.75	15.04	0.23
25		16.52	0.00	4.83	1.37	4.83	0.07
26		16.82	0.00	4.86	1.61	4.86	0.08
27		17.46	0.00	68.45	17.70	68.45	1.06
28		17.58	0.00	15.25	3.51	15.25	0.24
29	bornyl acetate	18.64	0.00	8.21	2.23	8.21	0.13
30	safrole	18.88	0.00	94.71	26.39	94.71	1.47
31	eugenol	21.35	0.00	14.74	4.16	14.74	0.23
32		21.54	0.00	9.31	3.08	9.31	0.14
33		21.66	0.00	102.72	29.11	102.72	1.59
34	geranyl acetate	22.39	0.00	11.87	3.70	11.87	0.18
35		22.73	0.00	25.17	7.86	25.17	0.39
36	methyl eugenol	23.54	0.00	93.89	28.94	93.89	1.46
37	beta caryophyllene	24.06	0.00	30.40	8.56	30.40	0.47
38		25.24	0.00	194.59	53.03	194.59	3.02
39		26.34	0.00	25.78	7.03	25.78	0.40
40		26.40	0.00	21.47	6.24	21.47	0.33

4361

Instrument 6890

C:\HPCHEM\2\DATA\2023\
43610000.D

Nutmeg CO2 Org
4361-KBBN
Germany
Myristica fragrans
Sample/Solvent/Ethanol: 0.06g/0.
51g/0.05g
Injection Amount: 0.2uL
20:1 Split Ratio

HP-5 5% Phenyl Methyl Siloxane
30.000m
250.000um
0.250um

12/4/2023 10:53:48 AM
12/4/2023 10:53:48 AM

1/26/2024
9:48:21 AM

#	Compound Name	Meas. Ret.	Amount	Response	Height	Area	Area %
41		27.07	0.00	23.61	6.69	23.61	0.37
42		27.48	0.00	4.14	1.24	4.14	0.06
43		27.70	0.00	7.54	2.08	7.54	0.12
44	myristicin	28.01	0.00	785.03	157.35	785.03	12.17
45		28.95	0.00	17.25	4.94	17.25	0.27
46	elemicin	29.38	0.00	1176.08	208.52	1176.08	18.23
47		29.46	0.00	4.41	1.59	4.41	0.07
48		30.70	0.00	15.03	4.32	15.03	0.23
49		30.96	0.00	328.67	79.23	328.67	5.09
50		32.63	0.00	92.53	26.90	92.53	1.43
51		33.10	0.00	11.44	3.08	11.44	0.18
52		35.86	0.00	3.90	1.16	3.90	0.06
53		36.45	0.00	49.33	10.48	49.33	0.76
54		36.64	0.00	18.33	4.95	18.33	0.28
55		37.12	0.00	5.92	1.63	5.92	0.09
56		38.21	0.00	7.28	1.75	7.28	0.11
57		38.96	0.00	30.78	5.75	30.78	0.48
58		40.93	0.00	13.49	3.03	13.49	0.21
59		41.73	0.00	19.17	4.48	19.17	0.30
60		42.66	0.00	12.33	2.98	12.33	0.19
61		47.72	0.00	11.18	2.38	11.18	0.17
62		47.95	0.00	5.62	1.67	5.62	0.09
63		52.73	0.00	5.87	1.55	5.87	0.09
64		60.52	0.00	16.92	2.71	16.92	0.26
65		61.96	0.00	60.96	8.92	60.96	0.94
66		65.98	0.00	110.13	12.27	110.13	1.71
67		66.45	0.00	299.14	26.25	299.14	4.64
68		66.64	0.00	44.29	5.59	44.29	0.69
69		68.69	0.00	30.87	3.57	30.87	0.48
70		69.56	0.00	149.77	14.21	149.77	2.32

