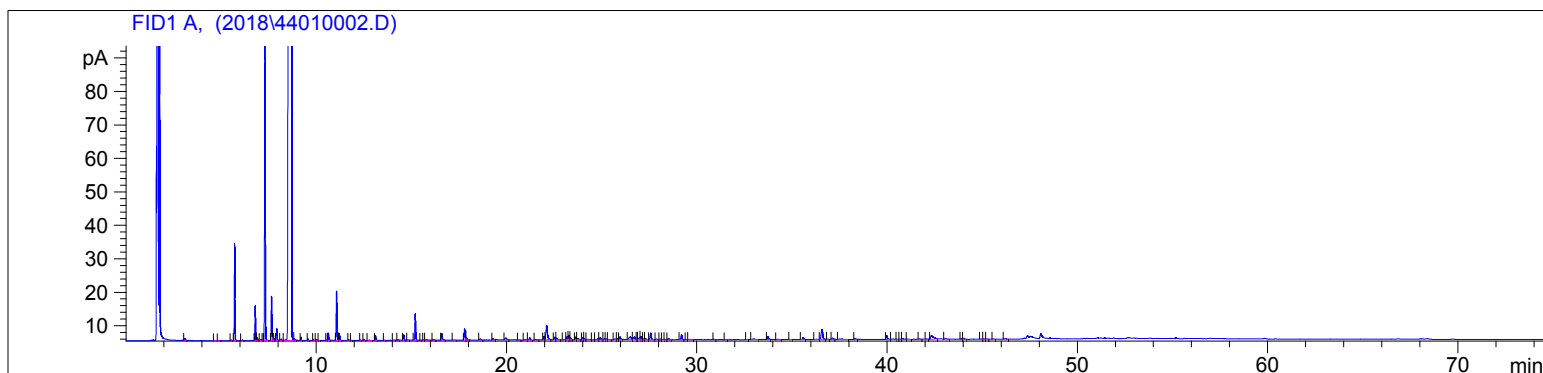


Orange, Sweet (Organic)  
4401-DDZCX  
Mexico  
citrus sinensis  
Sample/Solvent: 0.06g/0.61g  
Injection: 0.2uL  
15:1 Split Ratio

HP-5 5% Phenyl Methyl Siloxane  
30.000m  
250.000um  
0.250um

4/4/2018 10:12:42 AM  
4/4/2018 10:12:42 AM

4/4/2018  
1:23:51 PM



#	Compound Name	Meas. Ret.	Amount	Response	Height	Area	Area %
1		3.07	100.00	1.82	0.47	1.82	0.02
2		4.69	100.00	0.33	0.07	0.33	0.00
3		4.86	100.00	0.42	0.11	0.42	0.00
4		5.52	100.00	0.42	0.17	0.42	0.00
5	alpha pinene	5.71	100.00	66.90	28.96	66.90	0.57
6	camphene	6.10	100.00	0.46	0.16	0.46	0.00
7	sabinene	6.79	100.00	25.76	10.36	25.76	0.22
8	beta pinene	6.89	100.00	2.06	0.78	2.06	0.02
9	6-methyl-5-hepten-2-one	7.09	100.00	0.89	0.20	0.89	0.01
10		7.20	100.00	0.22	0.09	0.22	0.00
11	myrcene	7.30	100.00	235.97	93.62	235.97	2.01
12	n-octanal	7.64	100.00	36.02	13.17	36.02	0.31
13	alpha phellandrene	7.73	100.00	6.31	2.06	6.31	0.05
14	delta-3-carene	7.92	100.00	10.25	3.54	10.25	0.09
15	alpha terpinene	8.15	100.00	1.31	0.37	1.31	0.01
16	limonene	8.71	100.00	11042.36	1606.40	11042.36	94.09
17	cis-beta ocimene	8.85	100.00	1.58	0.40	1.58	0.01
18	trans-beta ocimene	9.20	100.00	2.48	0.99	2.48	0.02
19	gamma terpinene	9.57	100.00	1.21	0.44	1.21	0.01
20		9.87	100.00	0.52	0.18	0.52	0.00
21		10.01	100.00	1.02	0.28	1.02	0.01
22		10.13	100.00	0.28	0.10	0.28	0.00
23		10.56	100.00	0.38	0.15	0.38	0.00
24	terpinolene	10.64	100.00	6.25	2.19	6.25	0.05
25	linalool	11.08	100.00	42.51	14.68	42.51	0.36
26	nonanal	11.22	100.00	6.16	2.10	6.16	0.05
27		11.71	100.00	0.48	0.17	0.48	0.00
28		11.84	100.00	0.31	0.10	0.31	0.00
29	cis-limonene oxide	12.33	100.00	0.27	0.10	0.27	0.00
30	trans-limonene oxide	12.51	100.00	0.96	0.33	0.96	0.01
31		12.79	100.00	0.60	0.12	0.60	0.01
32	citronellol	13.12	100.00	4.60	1.52	4.60	0.04
33		13.57	100.00	0.26	0.08	0.26	0.00
34		14.06	100.00	0.22	0.08	0.22	0.00
35		14.30	100.00	0.41	0.13	0.41	0.00
36	alpha terpineol	14.60	100.00	4.83	1.51	4.83	0.04

4401-DDZCX

Instrument 6890

C:\HPCHEM\2\DATA\2018\  
44010002.DOrange, Sweet (Organic)  
4401-DDZCX  
Mexico  
citrus sinensis  
Sample/Solvent: 0.06g/0.61g  
Injection: 0.2uL  
15:1 Split RatioHP-5 5% Phenyl Methyl Siloxane  
30.000m  
250.000um  
0.250um4/4/2018 10:12:42 AM  
4/4/2018 10:12:42 AM4/4/2018  
1:23:51 PM

#	Compound Name	Meas. Ret.	Amount	Response	Height	Area	Area %
37		14.81	100.00	0.23	0.09	0.23	0.00
38	decanal	15.21	100.00	24.55	7.87	24.55	0.21
39		15.49	100.00	0.28	0.09	0.28	0.00
40		15.65	100.00	0.45	0.11	0.45	0.00
41		15.82	100.00	0.99	0.16	0.99	0.01
42		16.16	100.00	1.30	0.25	1.30	0.01
43	neral	16.61	100.00	7.29	1.97	7.29	0.06
44		17.22	100.00	0.39	0.08	0.39	0.00
45	geranial	17.81	100.00	11.51	3.37	11.51	0.10
46		17.89	100.00	3.02	0.79	3.02	0.03
47	bornyl acetate	18.61	100.00	1.58	0.32	1.58	0.01
48	n-nonanol acetate	19.29	100.00	1.16	0.37	1.16	0.01
49		19.97	100.00	3.25	0.57	3.25	0.03
50		20.65	100.00	0.41	0.10	0.41	0.00
51		20.97	100.00	1.15	0.20	1.15	0.01
52		21.23	100.00	2.65	0.66	2.65	0.02
53		21.54	100.00	0.79	0.17	0.79	0.01
54		21.98	100.00	3.16	0.96	3.16	0.03
55	alpha copaene	22.12	100.00	22.79	4.21	22.79	0.19
56	beta cubebene	22.54	100.00	2.62	0.76	2.62	0.02
57	beta elemene	22.63	100.00	2.24	0.49	2.24	0.02
58		23.08	100.00	0.72	0.13	0.72	0.01
59		23.19	100.00	4.39	0.96	4.39	0.04
60	dodecyl acetate	23.29	100.00	4.93	1.35	4.93	0.04
61		23.37	100.00	2.11	0.62	2.11	0.02
62	beta caryophyllene	23.63	100.00	3.08	0.83	3.08	0.03
63		23.75	100.00	2.27	0.40	2.27	0.02
64	trans-beta bergamotene	24.02	100.00	2.38	0.65	2.38	0.02
65		24.10	100.00	1.25	0.37	1.25	0.01
66		24.31	100.00	1.60	0.20	1.60	0.01
67		24.55	100.00	0.54	0.11	0.54	0.00
68		24.79	100.00	1.50	0.33	1.50	0.01
69	alpha humulene	24.93	100.00	3.55	0.56	3.55	0.03
70		25.15	100.00	1.29	0.29	1.29	0.01
71		25.23	100.00	1.12	0.25	1.12	0.01
72		25.35	100.00	0.59	0.12	0.59	0.01
73		25.71	100.00	1.12	0.22	1.12	0.01
74		25.83	100.00	1.02	0.27	1.02	0.01
75	germacrene D	25.97	100.00	3.03	0.82	3.03	0.03
76	valencene	26.50	100.18	6.85	0.80	6.85	0.06
77		26.73	100.47	4.77	0.79	4.77	0.04
78		26.86	101.30	0.90	0.24	0.90	0.01
79		27.00	100.85	2.98	0.55	2.98	0.03
80		27.07	100.76	3.65	0.92	3.65	0.03
81		27.21	102.61	1.09	0.24	1.09	0.01
82		27.31	104.72	1.43	0.25	1.43	0.01
83	delta cadinene	27.58	101.43	7.99	1.98	7.99	0.07
84		27.89	100.00	1.21	0.24	1.21	0.01
85		28.08	100.00	0.80	0.24	0.80	0.01
86		28.20	100.00	0.64	0.13	0.64	0.01
87		28.52	100.00	1.61	0.43	1.61	0.01
88	caryophyllene oxide	29.21	100.00	5.81	1.53	5.81	0.05
89		29.44	100.00	0.22	0.06	0.22	0.00
90		29.66	100.00	0.90	0.12	0.90	0.01
91		30.92	100.00	0.43	0.13	0.43	0.00

4401-DDZCX

Instrument 6890

C:\HPCHEM\2\DATA\2018\  
44010002.DOrange, Sweet (Organic)  
4401-DDZCX  
Mexico  
citrus sinensis  
Sample/Solvent: 0.06g/0.61g  
Injection: 0.2uL  
15:1 Split RatioHP-5 5% Phenyl Methyl Siloxane  
30.000m  
250.000um  
0.250um4/4/2018 10:12:42 AM  
4/4/2018 10:12:42 AM4/4/2018  
1:23:51 PM

#	Compound Name	Meas. Ret.	Amount	Response	Height	Area	Area %
92		31.51	100.00	0.35	0.08	0.35	0.00
93		32.64	100.00	0.34	0.07	0.34	0.00
94		33.00	100.00	1.88	0.22	1.88	0.02
95	beta sinensal	33.74	100.00	3.48	0.89	3.48	0.03
96		34.24	100.00	0.78	0.10	0.78	0.01
97		34.91	100.00	0.31	0.08	0.31	0.00
98	alpha sinensal	35.60	100.00	2.45	0.61	2.45	0.02
99		36.27	100.00	0.54	0.07	0.54	0.00
100	nootketone	36.59	100.00	17.26	2.93	17.26	0.15
101		36.87	100.00	0.41	0.09	0.41	0.00
102		37.14	97.43	1.45	0.31	1.45	0.01
103		37.64	100.00	1.90	0.16	1.90	0.02
104		38.33	100.00	1.10	0.24	1.10	0.01
105		39.99	100.00	4.78	1.08	4.78	0.04
106		40.32	100.00	1.16	0.15	1.16	0.01
107		40.52	100.00	0.36	0.07	0.36	0.00
108		40.69	100.00	0.45	0.08	0.45	0.00
109		40.85	100.00	1.46	0.26	1.46	0.01
110		41.10	100.00	0.70	0.09	0.70	0.01
111		41.71	100.00	0.64	0.13	0.64	0.01
112		42.08	100.00	0.53	0.11	0.53	0.00
113		42.34	100.00	10.69	1.05	10.69	0.09
114		43.08	100.00	1.34	0.24	1.34	0.01
115		43.90	100.00	0.61	0.16	0.61	0.01
116		44.04	100.00	1.35	0.32	1.35	0.01
117		44.94	100.00	0.34	0.08	0.34	0.00
118		45.10	100.00	0.60	0.15	0.60	0.01
119		45.24	100.00	0.29	0.09	0.29	0.00
120		45.59	100.00	0.30	0.09	0.30	0.00
121		46.24	100.00	1.36	0.23	1.36	0.01

