

Amrita Aromatherapy

Chromatogram Report

www.amrita.net

Sample Info:

Sample ID : Pine_Sylvestre_Hungary_Farmed_4562_071613 Amount [mg] : 1
 Sample : Pine_Sylvestre_Hungary_Farmed_4562_071613 ISTD Amount : 0
 Inj. Volume [mL] : 0.06 Dilution : 1

Method : DEF1-GCM

By : Administrator

Description :

Created : 12/2/2013 11:27 AM

Modified : 7/1/2014 12:13 PM

Calibration : Pine_Sylvestre_Hungary_Farmed_4562_071613

By : Administrator

Description :

Created : 7/1/2014 12:04:27 PM

Modified : 7/1/2014 12:13:40 PM

Result Table (ESTD - Pine_Sylvestre_Hungary_Farmed_4562_071613 - Detector 2)

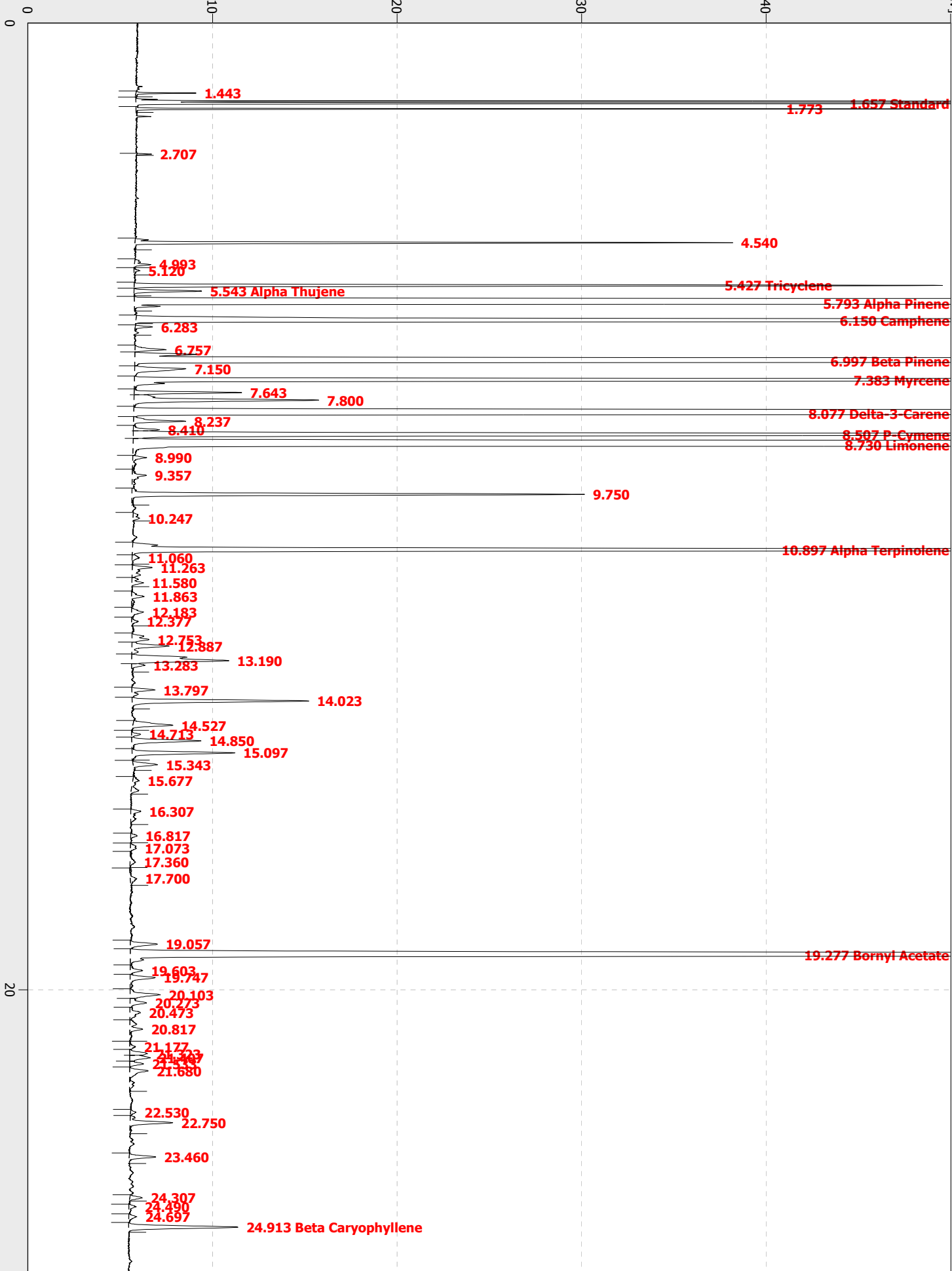
	Compound Name	Reten. Time [min]	Area [mV.s]	Area [%]	Height [mV]	Height [%]	Resolution [-]
1		1.443	3.774	0.024	3.258	0.1	
2	Standard	1.657	249.455	1.583	261.736	5.3	7.552
3		1.773	37.933	0.241	43.351	0.9	4.130
4		2.707	0.981	0.006	0.795	0.0	27.533
5		4.540	59.929	0.380	32.412	0.7	40.563
6		4.993	3.147	0.020	0.911	0.0	8.024
7		5.120	1.039	0.007	0.335	0.0	1.950
8	Tricyclene	5.427	96.259	0.611	43.817	0.9	4.720
9	Alpha Thujene	5.543	9.299	0.059	3.679	0.1	1.721
10	Alpha Pinene	5.793	5119.486	32.482	1437.023	29.4	2.855
11	Camphene	6.150	909.815	5.773	379.521	7.8	4.209
12		6.283	2.903	0.018	0.942	0.0	2.145
13		6.757	5.313	0.034	1.693	0.0	6.982
14	Beta Pinene	6.997	2336.240	14.823	730.602	14.9	2.832
15		7.150	12.151	0.077	2.783	0.1	1.467
16	Myrcene	7.383	450.783	2.860	183.946	3.8	2.503
17		7.643	14.944	0.095	5.843	0.1	3.682
18		7.800	36.019	0.229	10.022	0.2	1.912
19	Delta-3-Carene	8.077	2320.396	14.723	661.045	13.5	2.881
20		8.237	8.771	0.056	2.842	0.1	1.827
21		8.410	3.774	0.024	1.424	0.0	2.360
22	P-Cymene	8.507	267.315	1.696	88.147	1.8	1.222
23	Limonene	8.730	2554.826	16.210	654.075	13.4	2.325
24		8.990	3.588	0.023	0.764	0.0	2.707
25		9.357	4.751	0.030	0.775	0.0	4.187
26		9.750	67.625	0.429	24.540	0.5	4.801
27		10.247	2.059	0.013	0.363	0.0	5.861
28	Alpha Terpinolene	10.897	289.551	1.837	96.989	2.0	7.191
29		11.060	1.969	0.012	0.407	0.0	1.563
30		11.263	6.468	0.041	1.077	0.0	1.894
31		11.580	3.202	0.020	0.644	0.0	3.397
32		11.863	3.641	0.023	0.686	0.0	3.039
33		12.183	3.245	0.021	0.657	0.0	3.062
34		12.377	1.610	0.010	0.376	0.0	1.901
35		12.753	5.208	0.033	0.937	0.0	4.041
36		12.887	9.284	0.059	2.030	0.0	1.311
37		13.190	29.202	0.185	5.281	0.1	2.619
38		13.283	2.978	0.019	0.737	0.0	0.768

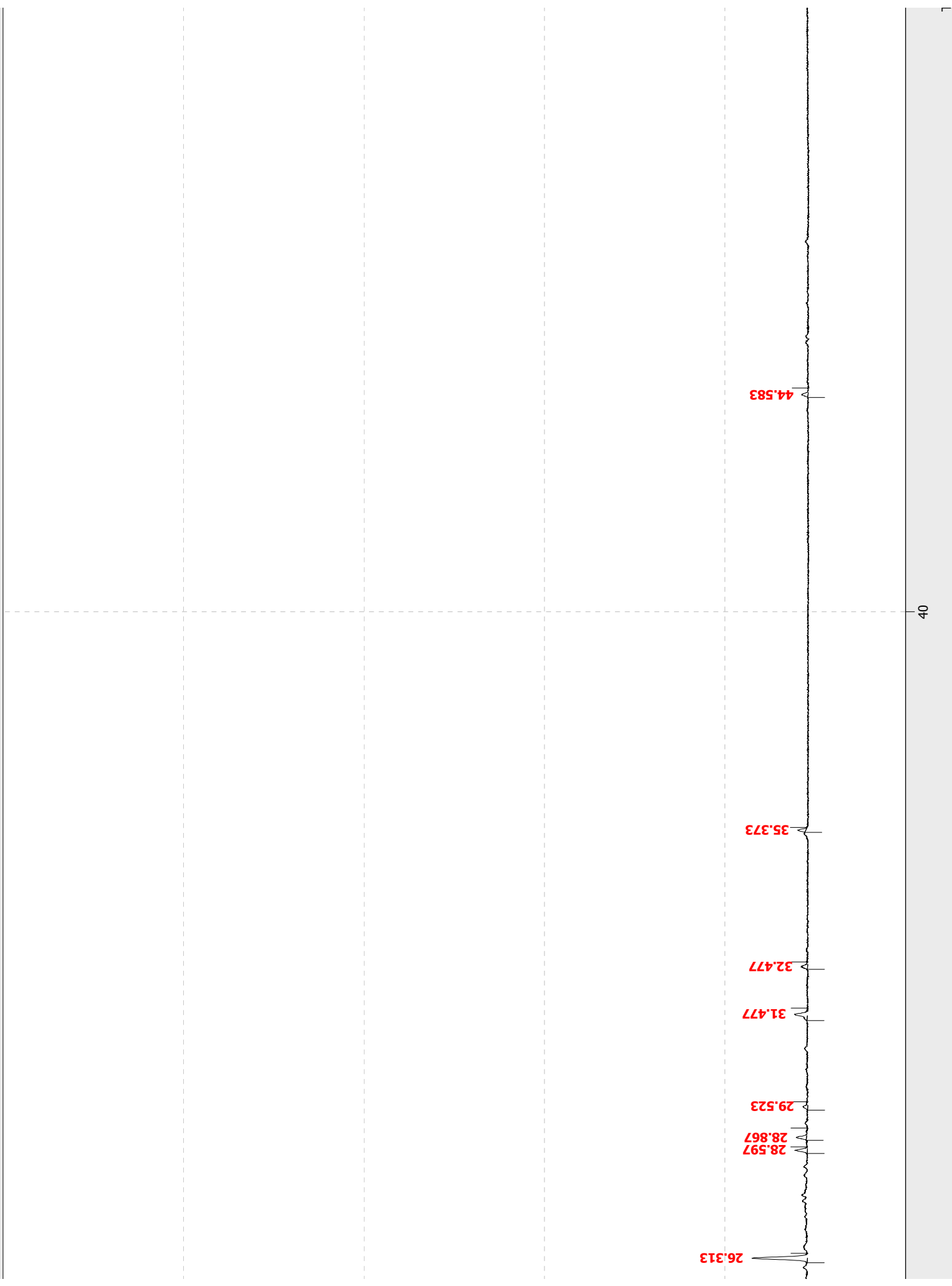
Result Table (ESTD - Pine_Sylvestre_Hungary_Farmed_4562_071613 - Detector 2)

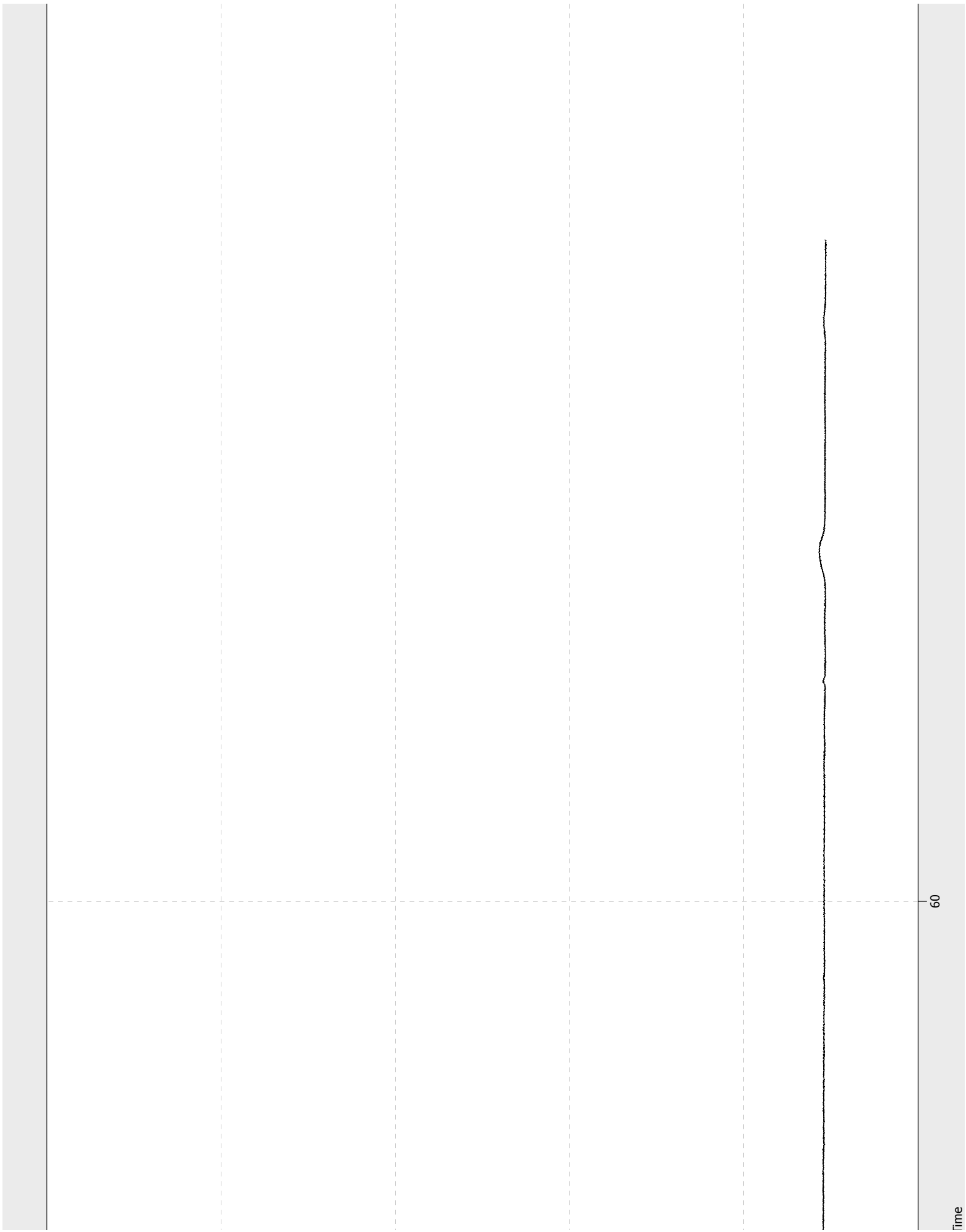
	Compound Name	Reten. Time [min]	Area [mV.s]	Area [%]	Height [mV]	Height [%]	Resolution [-]
39		13.797	5.279	0.033	1.268	0.0	5.192
40		14.023	32.678	0.207	9.584	0.2	2.507
41		14.527	9.321	0.059	2.187	0.0	4.816
42		14.713	1.670	0.011	0.498	0.0	1.836
43		14.850	14.490	0.092	3.761	0.1	1.423
44		15.097	18.913	0.120	5.587	0.1	2.568
45		15.343	5.417	0.034	1.338	0.0	2.426
46		15.677	4.199	0.027	0.362	0.0	3.189
47		16.307	4.071	0.026	0.559	0.0	6.195
48		16.817	1.489	0.009	0.356	0.0	4.879
49		17.073	1.964	0.012	0.339	0.0	1.893
50		17.360	2.202	0.014	0.309	0.0	1.780
51		17.700	2.694	0.017	0.370	0.0	2.229
52		19.057	6.012	0.038	1.474	0.0	10.218
53	Bornyl Acetate	19.277	588.434	3.734	151.858	3.1	1.997
54		19.603	2.980	0.019	0.684	0.0	3.125
55		19.747	6.432	0.041	1.377	0.0	1.371
56		20.103	7.705	0.049	1.656	0.0	3.156
57		20.273	4.480	0.028	0.909	0.0	1.468
58		20.473	4.007	0.025	0.577	0.0	1.727
59		20.817	5.237	0.033	0.710	0.0	3.116
60		21.177	1.291	0.008	0.321	0.0	3.268
61		21.323	3.981	0.025	0.978	0.0	1.207
62		21.407	5.076	0.032	1.134	0.0	0.628
63		21.533	2.944	0.019	0.766	0.0	1.043
64		21.680	7.328	0.046	1.015	0.0	1.366
65		22.530	1.081	0.007	0.306	0.0	8.358
66		22.750	9.787	0.062	2.318	0.0	2.291
67		23.460	5.464	0.035	1.448	0.0	7.181
68		24.307	2.518	0.016	0.690	0.0	8.563
69		24.490	1.895	0.012	0.404	0.0	1.854
70		24.697	1.893	0.012	0.442	0.0	1.977
71	Beta Caryophyllene	24.913	22.642	0.144	5.932	0.1	1.967
72		26.313	12.017	0.076	3.083	0.1	13.042
73		28.597	2.424	0.015	0.705	0.0	22.453
74		28.867	2.370	0.015	0.586	0.0	2.896
75		29.523	1.284	0.008	0.283	0.0	6.837
76		31.477	3.615	0.023	0.735	0.0	18.689
77		32.477	1.550	0.010	0.372	0.0	9.077
78		35.373	1.444	0.009	0.480	0.0	28.484
79		44.583	1.626	0.010	0.356	0.0	93.153
		Total	15760.840	100.000	4894.580	100.0	

voltage

[mV]







60

Time

— Pine_Sylvestre_Hungary_Farmed_4562_071613 - Detector 2

[min.]

100

80