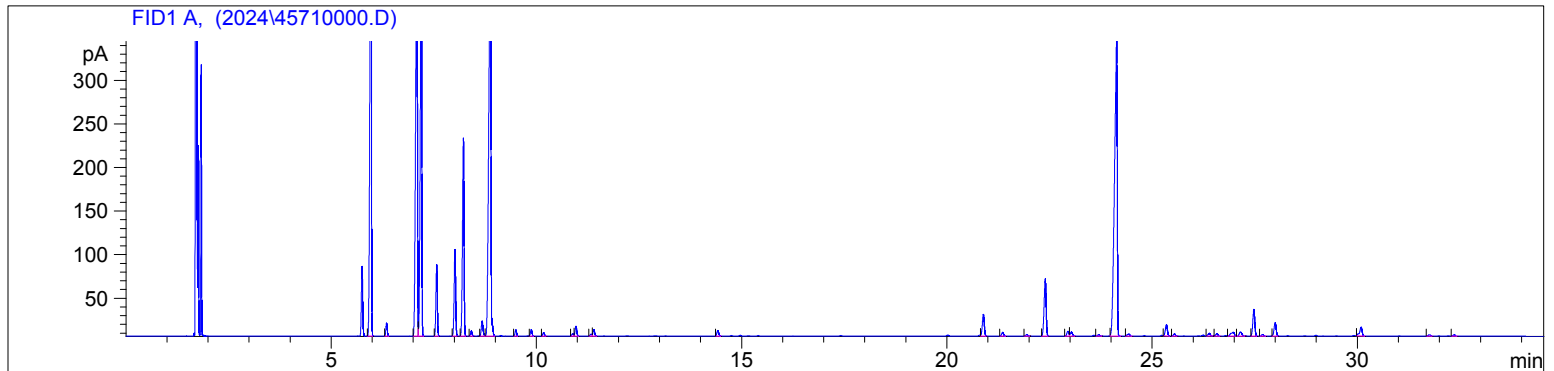


Pepper, Black Org  
4571 AAGB  
Sri Lanka  
Piper Nigrum  
Sample/Solvent: 0.05g/0.52g  
Injection Amount: 0.2uL  
20:1 Split Ratio

HP-5 5% Phenyl Methyl Siloxane  
30.000m  
250.000um  
0.250um

2/7/2025 9:34:50 AM  
2/7/2025 9:34:50 AM

2/7/2025  
11:07:39 AM



#	Compound Name	Meas. Ret.	Amount	Response	Height	Area	Area %
1	Alpha Pinene	5.96	0.00	1444.07	579.31	1444.07	15.34
2	Camphene	6.35	0.00	35.31	15.08	35.31	0.38
3	Sabinene	7.08	0.00	1447.70	484.43	1447.70	15.38
4	Beta Pinene	7.19	0.00	1174.63	462.12	1174.63	12.48
5	Myrcene	7.57	0.00	198.24	81.97	198.24	2.11
6	Delta 3-Carene	8.01	0.00	254.99	99.15	254.99	2.71
7		8.22	0.00	596.82	227.30	596.82	6.34
8		8.41	0.00	15.31	6.02	15.31	0.16
9	para cymene	8.67	0.00	49.47	16.99	49.47	0.53
10	d-limonene	8.87	0.00	1729.17	498.05	1729.17	18.37
11		9.49	0.00	19.18	7.39	19.18	0.20
12	1.8 Cineol	9.88	0.00	20.23	7.67	20.23	0.21
13	Gamma Terpinene	10.18	0.00	11.90	4.18	11.90	0.13
14	Terpinolene	10.89	0.00	7.73	2.77	7.73	0.08
15	linalool	10.97	0.00	32.85	11.36	32.85	0.35
16	Camphor	11.33	0.00	6.46	2.41	6.46	0.07
17	Terpin 4-ol	11.40	0.00	21.89	7.38	21.89	0.23
18	Alpha Terpineol	14.42	0.00	20.75	6.48	20.75	0.22
19		20.88	0.00	83.05	24.93	83.05	0.88
20	trans-piperitol acetate	21.36	0.00	15.14	4.44	15.14	0.16
21		21.94	0.00	6.29	1.74	6.29	0.07
22	alpha cubebene	22.39	0.00	228.50	65.59	228.50	2.43
23		22.94	0.00	19.46	5.71	19.46	0.21
24	alpha copaene	23.03	0.00	17.28	4.64	17.28	0.18
25	beta cubebene	23.69	0.00	4.80	1.46	4.80	0.05
26	Beta Caryophyllene	24.13	0.00	1597.43	344.82	1597.43	16.97
27		24.43	0.00	10.78	2.61	10.78	0.11
28	alpha humulene	25.34	0.00	45.18	12.91	45.18	0.48
29		25.54	0.00	8.77	2.58	8.77	0.09
30		26.39	0.00	11.67	3.21	11.67	0.12
31		26.58	0.00	9.09	2.75	9.09	0.10
32		26.97	0.00	26.44	4.58	26.44	0.28
33	germacrene d	27.15	0.00	21.06	4.59	21.06	0.22
34	beta selinene	27.48	0.00	103.10	30.64	103.10	1.10
35	beta bisabolene	27.69	0.00	7.22	1.95	7.22	0.08
36	delta cadinene	27.99	0.00	55.70	15.46	55.70	0.59
37	caryophyllene oxide	30.09	0.00	44.38	10.27	44.38	0.47
38		31.75	0.00	5.91	1.67	5.91	0.06
39		32.35	0.00	5.67	1.61	5.67	0.06

