

4571

Instrument 6890

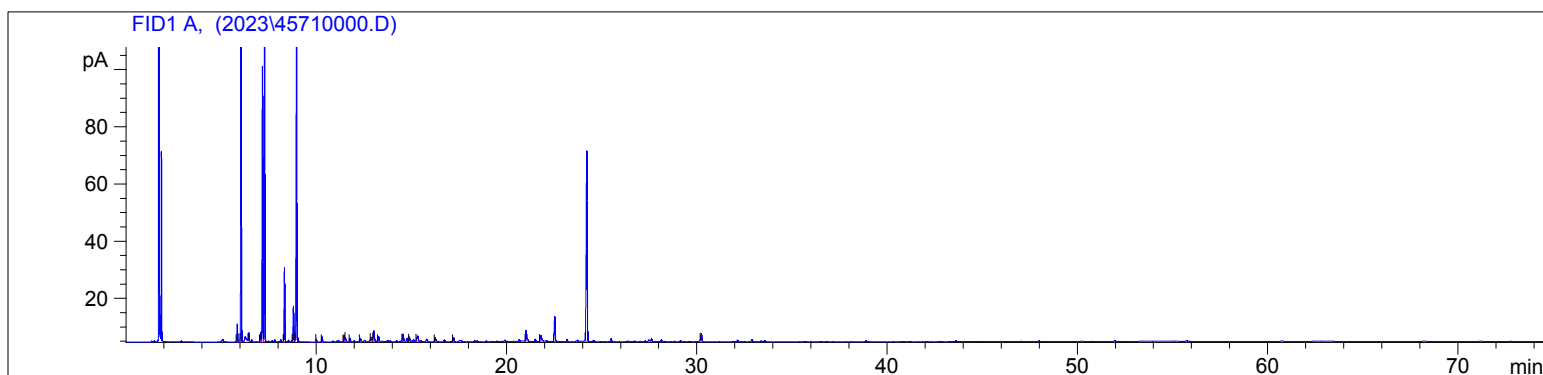
C:\HPCHEM\2\DATA\2023\  
45710000.D

Black Pepper Organic  
4571-EAEN  
Sri Lanka  
Piper nigrum  
Sample/Solvent: 0.06g/0.49g  
Injection Amount: 0.2uL  
15:1 Split Ratio

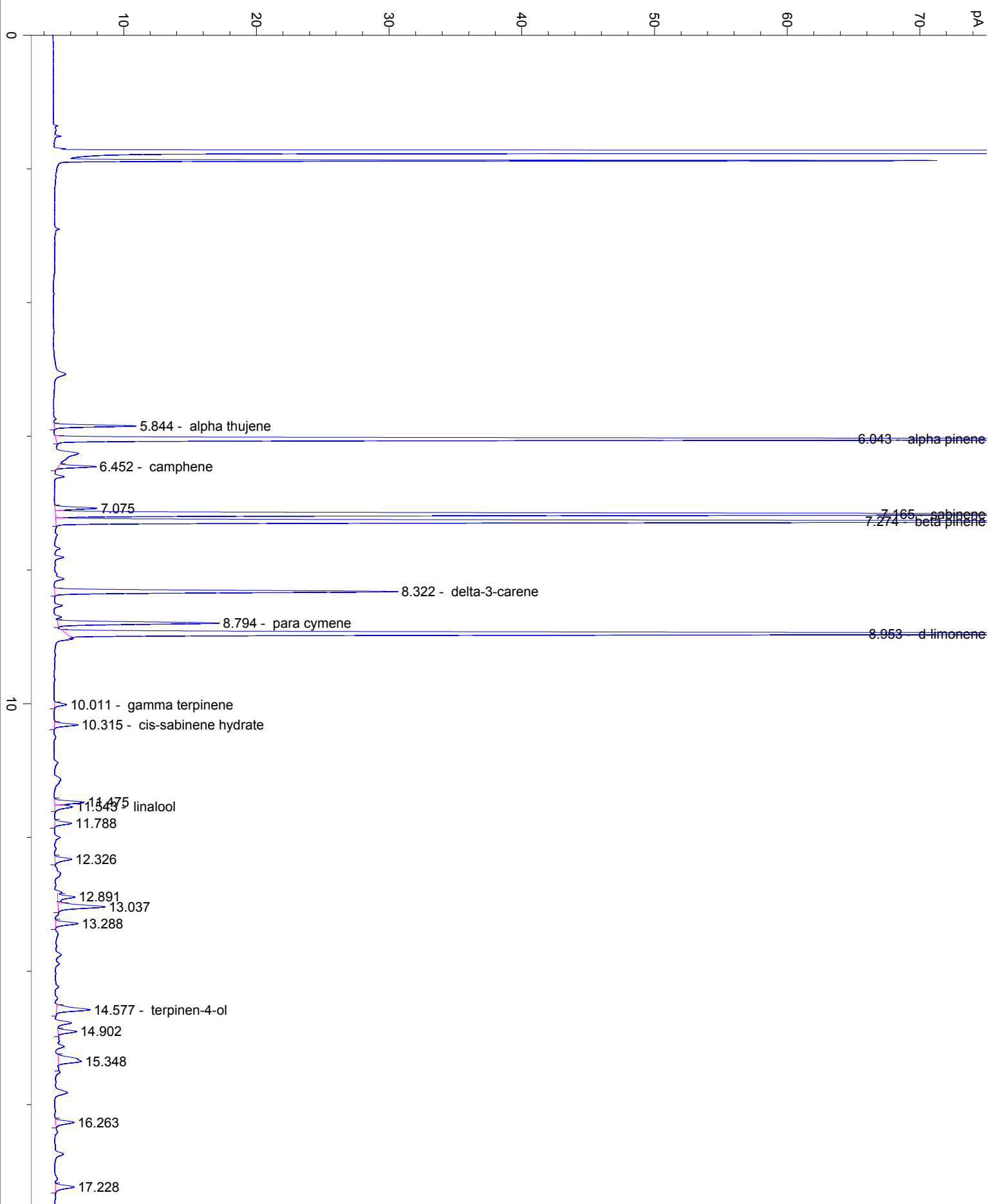
HP-5 5% Phenyl Methyl Siloxane  
30.000m  
250.000um  
0.250um

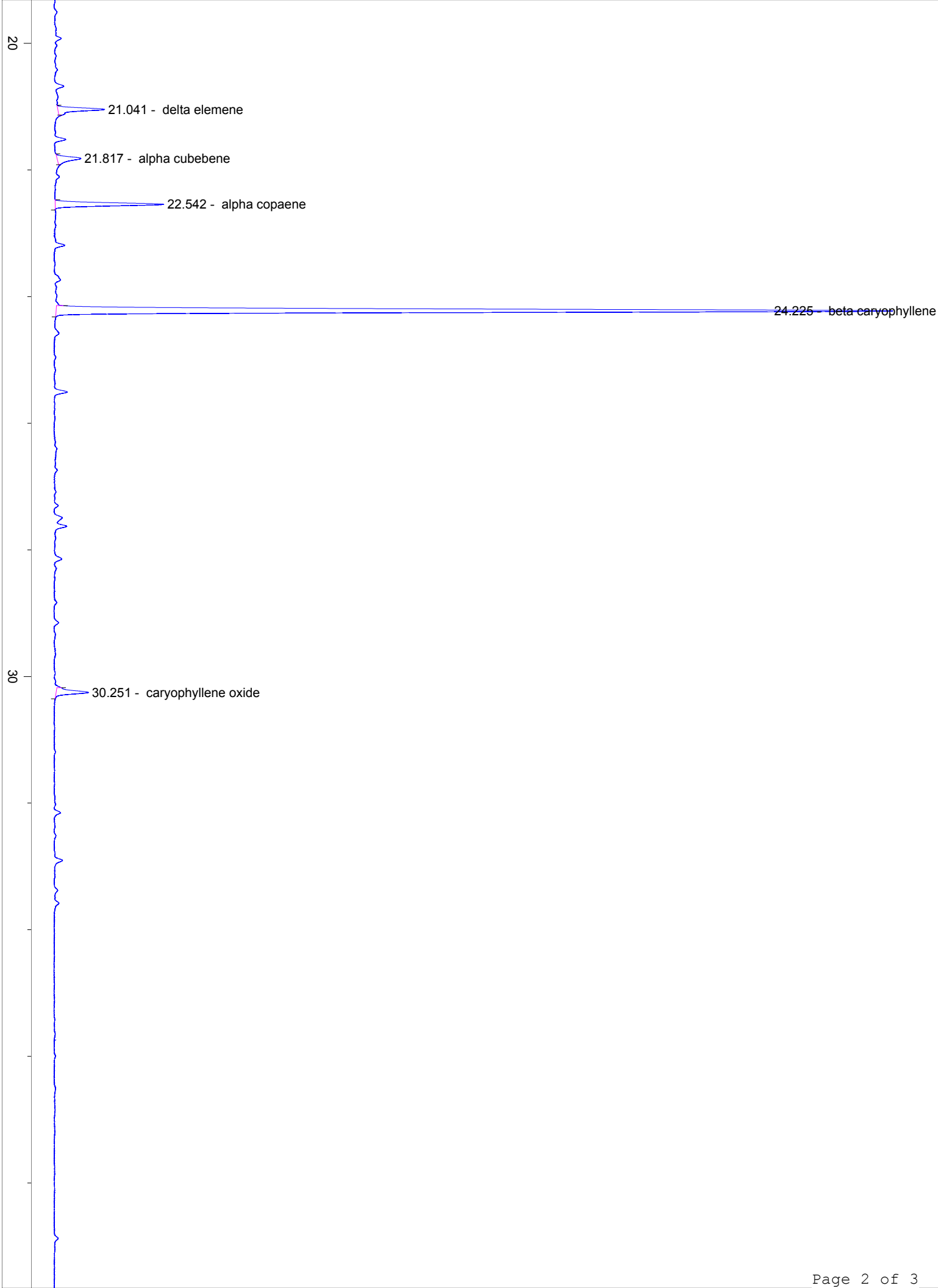
5/16/2023 9:27:26 AM  
5/16/2023 9:27:26 AM

5/16/2023  
11:01:16 AM



#	Compound Name	Meas. Ret.	Amount	Response	Height	Area	Area %
1	alpha thujene	5.84	0.00	13.20	6.16	13.20	0.86
2	alpha pinene	6.04	0.00	255.20	113.52	255.20	16.68
3	camphene	6.45	0.00	6.22	2.83	6.22	0.41
4		7.07	0.00	7.43	3.18	7.43	0.49
5	sabinene	7.17	0.00	234.00	96.26	234.00	15.29
6	beta pinene	7.27	0.00	260.37	107.82	260.37	17.02
7	delta-3-carene	8.32	0.00	66.14	25.86	66.14	4.32
8	para cymene	8.79	0.00	31.19	12.16	31.19	2.04
9	d-limonene	8.95	0.00	274.12	105.32	274.12	17.92
10	gamma terpinene	10.01	0.00	2.37	0.91	2.37	0.16
11	cis-sabinene hydrate	10.32	0.00	4.89	1.77	4.89	0.32
12		11.48	0.00	6.66	2.21	6.66	0.43
13	linalool	11.54	0.00	4.08	1.33	4.08	0.27
14		11.79	0.00	3.86	1.27	3.86	0.25
15		12.33	0.00	4.22	1.26	4.22	0.28
16		12.89	0.00	4.37	1.32	4.37	0.29
17		13.04	0.00	12.92	3.55	12.92	0.84
18		13.29	0.00	5.41	1.70	5.41	0.35
19	terpinen-4-ol	14.58	0.00	9.47	2.52	9.47	0.62
20		14.90	0.00	4.45	1.41	4.45	0.29
21		15.35	0.00	9.03	1.75	9.03	0.59
22		16.26	0.00	4.82	1.38	4.82	0.32
23		17.23	0.00	5.05	1.41	5.05	0.33
24	delta elemene	21.04	0.00	13.47	3.73	13.47	0.88
25	alpha cubebene	21.82	0.00	8.55	1.90	8.55	0.56
26	alpha copaene	22.54	0.00	29.33	8.64	29.33	1.92
27	beta caryophyllene	24.23	0.00	239.08	66.50	239.08	15.63
28	caryophyllene oxide	30.25	0.00	10.10	2.57	10.10	0.66





40

50

min