

4571-GCAH

Instrument 6890

C:\HPCHEM\2\DATA\2020\
45710000.D

Black Pepper Organic

HP-5 5% Phenyl Methyl Siloxane

4571-GCAH

30.000m

Sri Lanka

250.000um

Piper nigrum

0.250um

Sample/Solvent: 0.06g/0.50g/0.07
(alcohol)

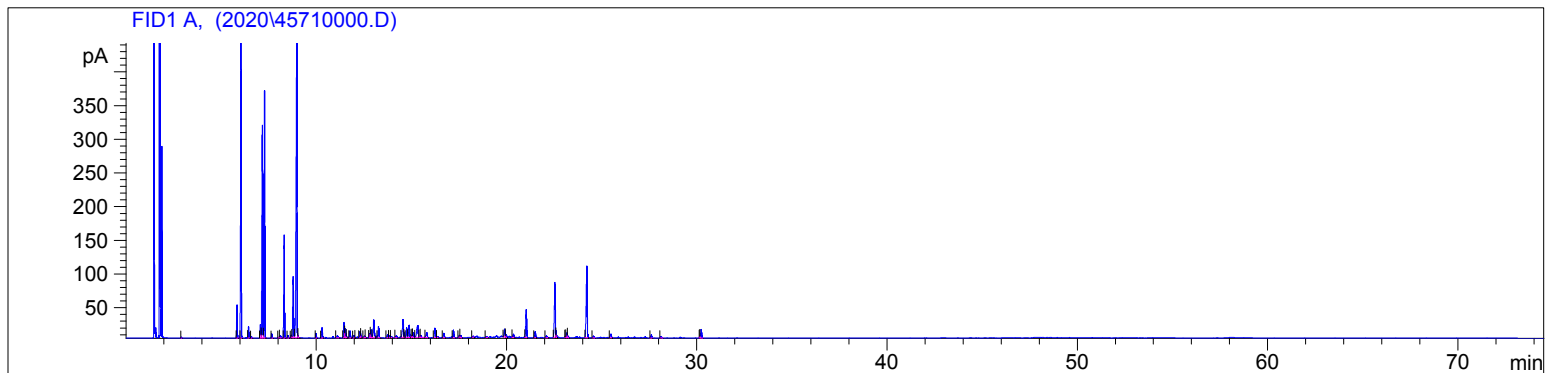
Injection Amount: 0.2uL ->

8/3/2020 9:41:18 AM

8/3/2020

8/3/2020 9:41:18 AM

11:30:47 AM



#	Compound Name	Meas. Ret.	Amount	Response	Height	Area	Area %
1		2.90	100.00	1.81	1.21	1.81	0.02
2	alpha thujene	5.84	100.00	108.56	48.92	108.56	1.45
3	alpha pinene	6.06	100.00	1050.41	442.63	1050.41	13.99
4	camphene	6.45	100.00	38.43	16.65	38.43	0.51
5		6.60	100.00	6.28	2.33	6.28	0.08
6		7.07	100.00	51.69	19.83	51.69	0.69
7	sabinene	7.18	100.00	872.33	315.16	872.33	11.62
8	beta pinene	7.29	100.00	926.49	367.07	926.49	12.34
9	myrcene	7.67	100.00	15.19	6.21	15.19	0.20
10		8.07	100.00	1.95	1.23	1.95	0.03
11		8.12	100.00	11.11	3.19	11.11	0.15
12	delta-3-carene	8.32	100.00	394.22	152.63	394.22	5.25
13		8.52	100.00	9.91	3.78	9.91	0.13
14		8.70	100.00	8.85	3.82	8.85	0.12
15	para cymene	8.79	100.00	266.17	90.75	266.17	3.55
16	d-limonene	8.99	100.00	1608.90	481.54	1608.90	21.43
17	1,8 cineol	9.04	100.00	4.92	3.19	4.92	0.07
18	gamma terpinene	10.00	100.00	17.73	6.51	17.73	0.24
19		10.30	100.00	43.19	15.27	43.19	0.58
20	terpinolene	11.10	100.00	12.95	3.14	12.95	0.17
21		11.45	100.00	67.47	22.85	67.47	0.90
22		11.52	100.00	39.78	13.51	39.78	0.53
23		11.57	100.00	4.40	2.25	4.40	0.06
24		11.77	100.00	30.26	10.01	30.26	0.40
25		11.98	100.00	10.26	3.44	10.26	0.14
26		12.04	100.00	1.03	0.60	1.03	0.01
27		12.30	100.00	28.25	9.27	28.25	0.38
28		12.34	100.00	5.51	2.97	5.51	0.07

4571-GCAH

Instrument 6890

C:\HPCHEM\2\DATA\2020\
45710000.D

Black Pepper Organic

HP-5 5% Phenyl Methyl Siloxane

4571-GCAH

30.000m

Sri Lanka

250.000um

Piper nigrum

0.250um

Sample/Solvent: 0.06g/0.50g/0.07
(alcohol)

Injection Amount: 0.2uL

->

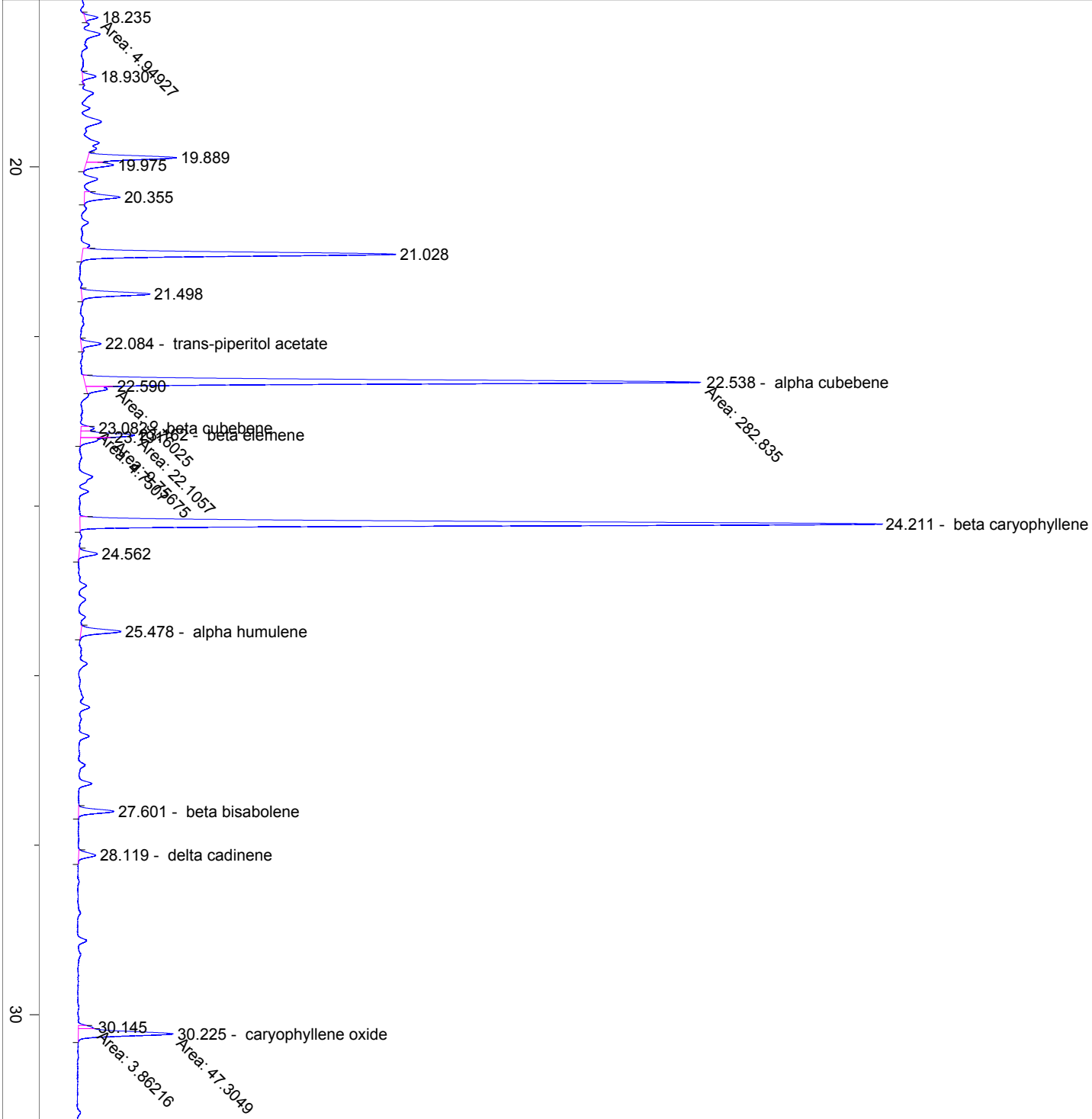
8/3/2020 9:41:18 AM

8/3/2020

8/3/2020 9:41:18 AM

11:30:47 AM

#	Compound Name	Meas. Ret.	Amount	Response	Height	Area	Area %
29		12.52	100.00	9.52	2.34	9.52	0.13
30		12.57	100.00	1.65	1.43	1.65	0.02
31		12.81	100.00	19.38	6.05	19.38	0.26
32		12.87	100.00	38.60	11.89	38.60	0.51
33		13.02	100.00	103.40	26.78	103.40	1.38
34		13.26	100.00	52.48	16.64	52.48	0.70
35		13.73	100.00	13.97	3.96	13.97	0.19
36		13.87	100.00	8.70	2.99	8.70	0.12
37		13.95	100.00	3.80	1.34	3.80	0.05
38		14.20	100.00	11.60	3.19	11.60	0.15
39	terpin-4-ol	14.56	100.00	105.46	26.75	105.46	1.40
40		14.61	100.00	1.63	1.51	1.63	0.02
41		14.74	100.00	46.55	14.23	46.55	0.62
42		14.87	100.00	65.15	18.44	65.15	0.87
43		15.02	100.00	9.49	2.90	9.49	0.13
44	alpha terpineol	15.10	100.00	24.74	7.33	24.74	0.33
45		15.32	100.00	95.23	17.74	95.23	1.27
46		15.47	100.00	4.79	2.02	4.79	0.06
47		15.49	100.00	8.06	2.83	8.06	0.11
48		15.80	100.00	30.32	7.46	30.32	0.40
49		16.23	100.00	44.58	13.82	44.58	0.59
50		16.39	100.00	6.69	1.83	6.69	0.09
51		16.70	100.00	23.01	6.60	23.01	0.31
52		17.20	100.00	36.81	11.26	36.81	0.49
53		17.51	100.00	12.26	3.79	12.26	0.16
54		17.58	100.00	13.11	3.53	13.11	0.17
55		18.23	100.00	4.95	1.71	4.95	0.07
56		18.93	100.00	5.74	1.77	5.74	0.08
57		19.89	100.00	39.56	11.72	39.56	0.53
58		19.97	100.00	12.34	3.67	12.34	0.16
59		20.36	100.00	17.85	4.70	17.85	0.24
60		21.03	100.00	140.28	41.50	140.28	1.87
61		21.50	100.00	30.93	9.04	30.93	0.41
62	trans-piperitol acetate	22.08	100.00	9.49	2.63	9.49	0.13
63	alpha cubebene	22.54	100.00	282.83	81.83	282.83	3.77
64		22.59	100.00	9.76	3.59	9.76	0.13
65	beta cubebene	23.08	100.00	4.75	1.75	4.75	0.06
66	beta elemene	23.16	100.00	22.11	7.17	22.11	0.29
67		23.19	100.00	9.76	3.92	9.76	0.13
68	beta caryophyllene	24.21	100.00	383.36	106.18	383.36	5.11
69		24.56	100.00	8.44	2.41	8.44	0.11
70	alpha humulene	25.48	100.00	19.58	5.26	19.58	0.26
71	beta bisabolene	27.60	100.00	16.02	4.66	16.02	0.21
72	delta cadinene	28.12	100.00	8.78	2.25	8.78	0.12
73		30.15	100.00	3.86	2.05	3.86	0.05
74	caryophyllene oxide	30.23	100.00	47.30	12.56	47.30	0.63



40

50

