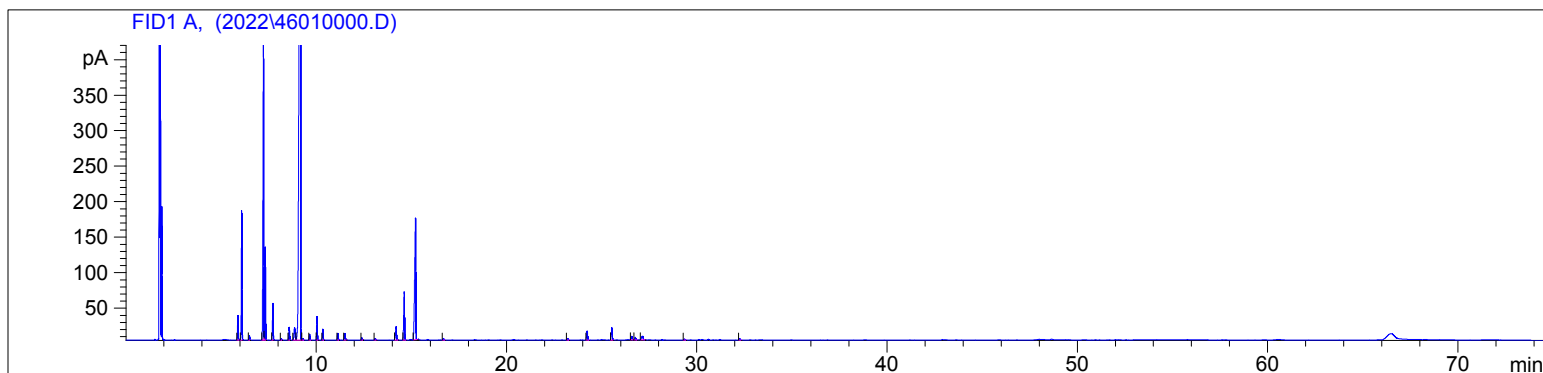


4601

Instrument 6890

C:\HPCHEM\2\DATA\2022\
46010000.DRavintsara Organic
4601-AZIN
Madagascar
Cinnamomum camphora
Injection Amount: 0.2uL
15:1 Split RatioHP-5 5% Phenyl Methyl Siloxane
30.000m
250.000um
0.250um1/10/2023 9:34:46 AM
1/10/2023 9:34:46 AM1/10/2023
10:59:13 AM

#	Compound Name	Meas. Ret.	Amount	Response	Height	Area	Area %
1	alpha thujene	5.88	0.00	76.09	34.39	76.09	0.88
2	alpha pinene	6.08	0.00	428.95	182.43	428.95	4.99
3	camphene	6.48	0.00	14.14	5.84	14.14	0.16
4	sabinene	7.22	0.00	1152.67	420.28	1152.67	13.40
5	beta pinene	7.31	0.00	309.44	131.03	309.44	3.60
6	myrcene	7.71	0.00	126.22	51.81	126.22	1.47
7		8.16	0.00	5.93	2.23	5.93	0.07
8		8.57	0.00	51.54	18.10	51.54	0.60
9		8.85	0.00	75.80	17.36	75.80	0.88
10	1,8-cineol	9.16	0.00	4920.72	1004.45	4920.72	57.20
11		9.29	0.00	5.18	1.86	5.18	0.06
12	trans-beta ocimene	9.66	0.00	20.55	7.98	20.55	0.24
13	gamma terpinene	10.05	0.00	90.44	33.19	90.44	1.05
14	cis sabinene hydrate	10.35	0.00	43.09	15.25	43.09	0.50
15	terpinolene	11.14	0.00	27.81	9.48	27.81	0.32
16	linalool	11.51	0.00	31.98	9.56	31.98	0.37
17		12.40	0.00	9.49	3.25	9.49	0.11
18		13.11	0.00	7.31	2.18	7.31	0.08
19	3-thujanol	14.21	0.00	68.59	18.90	68.59	0.80
20	terpin-4-ol	14.63	0.00	218.94	67.81	218.94	2.55
21	alpha terpineol	15.23	0.00	721.94	170.75	721.94	8.39
22		16.69	0.00	8.45	2.39	8.45	0.10
23		23.22	0.00	7.62	2.27	7.62	0.09
24	beta caryophyllene	24.25	0.00	45.06	12.69	45.06	0.52
25	alpha humulene	25.54	0.00	61.69	17.40	61.69	0.72
26		26.59	0.00	17.04	4.91	17.04	0.20
27		26.77	0.00	13.01	3.61	13.01	0.15
28	germacrene D	27.13	0.00	31.76	5.07	31.76	0.37
29		29.36	0.00	4.73	1.41	4.73	0.06
30		32.27	0.00	5.79	1.62	5.79	0.07

